



## Absolute Maximum Ratings (Note 1)

If Military/Aerospace specified devices are required, please contact the National Semiconductor Sales Office/Distributors for availability and specifications.

Supply Voltage	7V
Input Voltage	5.5V
Output Voltage	5.5V
Storage Temperature	-65°C to +150°C
Maximum Power Dissipation* at 25°C	
Cavity Package	1667 mW
Molded Package	1832 mW
Lead Temperature (soldering, 4 sec.)	260°C

\*Derate cavity package 11.1 mW/°C above 25°C; derate molded package 14.7 mW/°C above 25°C.

## Recommended Operating Conditions

	Min	Max	Units
Supply Voltage ( $V_{CC}$ )			
DP7308	4.5	5.5	V
DP8308	4.75	5.25	V
Temperature ( $T_A$ )			
DP7308	-55	+125	°C
DP8308	0	+70	°C

## DC Electrical Characteristics (Notes 2 and 3)

Symbol	Parameter	Conditions	Min	Typ	Max	Units
<b>A PORT (A0-A7)</b>						
$V_{IH}$	Logical "1" Input Voltage	$\bar{T} = V_{IL}, \bar{R} = 2.0V$	2.0			V
$V_{IL}$	Logical "0" Input Voltage	$\bar{T} = V_{IL}, \bar{R} = 2.0V$			0.8	V
					0.7	V
$V_{OH}$	Logical "1" Output Voltage	$\bar{T} = 2.0V, \bar{R} = V_{IL}$				V
		$I_{OH} = -0.4 \text{ mA}$	$V_{CC} - 1.15$	$V_{CC} - 0.7$		V
		$I_{OH} = -3 \text{ mA}$	2.7	3.95		V
$V_{OL}$	Logical "0" Output Voltage	$\bar{T} = 2.0V, \bar{R} = V_{IL}$			0.35	V
		$I_{OL} = 16 \text{ mA (8308)}$			0.5	V
		$I_{OL} = 8 \text{ mA (both)}$			0.3	V
$I_{OS}$	Output Short Circuit Current	$\bar{T} = 2.0V, \bar{R} = V_{IL}, V_O = 0V$ $V_{CC} = \text{Max (Note 4)}$	-10	-38	-75	mA
$I_{IH}$	Logical "1" Input Current	$\bar{T} = V_{IL}, \bar{R} = 2.0V, V_{IH} = 2.7V$		0.1	80	$\mu\text{A}$
$I_I$	Input Current at Maximum Input Voltage	$\bar{R} = \bar{T} = 2.0V, V_{CC} = \text{Max}, V_{IH} = 5.25V$			1	mA
$I_{IL}$	Logical "0" Input Current	$\bar{T} = V_{IL}, \bar{R} = 2.0V, V_{IN} = 0.4V$		-70	-200	$\mu\text{A}$
$V_{CLAMP}$	Input Clamp Voltage	$\bar{T} = \bar{R} = 2.0V, I_{IN} = -12 \text{ mA}$		-0.7	-1.5	V
$I_{OD}$	Output/Input TRI-STATE Current	$\bar{T} = \bar{R} = 2.0V$			-200	$\mu\text{A}$
		$V_{IN} = 0.4V$			80	$\mu\text{A}$
		$V_{IN} = 4.0V$				$\mu\text{A}$
<b>B PORT (B0-B7)</b>						
$V_{IH}$	Logical "1" Input Voltage	$\bar{T} = 2.0V, \bar{R} = V_{IL}$	2.0			V
$V_{IL}$	Logical "0" Input Voltage	$\bar{T} = 2.0V, \bar{R} = V_{IL}$			0.8	V
					0.7	V
$V_{OH}$	Logical "1" Output Voltage	$\bar{T} = V_{IL}, \bar{R} = 2.0V$				V
		$I_{OH} = -0.4 \text{ mA}$	$V_{CC} - 1.15$	$V_{CC} - 0.8$		V
		$I_{OH} = -5 \text{ mA}$	2.7	3.9		V
		$I_{OH} = -10 \text{ mA}$	2.4	3.6		V
$V_{OL}$	Logical "0" Output Voltage	$\bar{T} = V_{IL}, \bar{R} = 2.0V$			0.3	V
		$I_{OL} = 20 \text{ mA}$			0.4	V
		$I_{OL} = 48 \text{ mA}$			0.5	V
$I_{OS}$	Output Short Circuit Current	$\bar{T} = V_{IL}, \bar{R} = 2.0V, V_O = 0V,$ $V_{CC} = \text{Max (Note 4)}$	-25	-50	-150	mA
$I_{IH}$	Logical "1" Input Current	$\bar{T} = 2.0V, \bar{R} = V_{IL}, V_{IH} = 2.7V$		0.1	80	$\mu\text{A}$
$I_I$	Input Current at Maximum Input Voltage	$\bar{T} = \bar{R} = 2.0V, V_{CC} = \text{Max}, V_{IH} = 5.25V$			1	mA
$I_{IL}$	Logical "0" Input Current	$\bar{T} = 2.0V, \bar{R} = V_{IL}, V_{IN} = 0.4V$		-70	-200	$\mu\text{A}$
$V_{CLAMP}$	Input Clamp Voltage	$\bar{T} = \bar{R} = 2.0V, I_{IN} = -12 \text{ mA}$		-0.7	-1.5	V
$I_{OD}$	Output/Input TRI-STATE Current	$\bar{T} = \bar{R} = 2.0V$			-200	$\mu\text{A}$
		$V_{IN} = 0.4V$			+200	$\mu\text{A}$
		$V_{IN} = 4.0V$				$\mu\text{A}$

## DC Electrical Characteristics (Notes 2 and 3) (Continued)

Symbol	Parameter	Conditions	Min	Typ	Max	Units
<b>CONTROL INPUTS <math>\bar{T}</math>, <math>\bar{R}</math></b>						
$V_{IH}$	Logical "1" Input Voltage		2.0			V
$V_{IL}$	Logical "0" Input Voltage	DP8308			0.8	V
		DP7308			0.7	V
$I_{IH}$	Logical "1" Input Current	$V_{IH} = 2.7V$		0.5	20	$\mu A$
$I_I$	Maximum Input Current	$V_{CC} = \text{Max}, V_{IH} = 5.25V$			1.0	mA
$I_{IL}$	Logical "0" Input Current	$V_{IL} = 0.4V$	$\bar{R}$	-0.1	-0.25	mA
			$\bar{T}$	-0.25	-0.5	mA
$V_{CLAMP}$	Input Clamp Voltage	$I_{IN} = -12 \text{ mA}$		-0.8	-1.5	V
<b>POWER SUPPLY CURRENT</b>						
$I_{CC}$	Power Supply Current	$\bar{T} = \bar{R} = 2.0V, V_{IN} = 0.4V, V_{CC} = \text{Max}$		70	100	mA
		$\bar{T} = V_{INA} = 0.4V, \bar{R} = 2V, V_{CC} = \text{Max}$		90	140	mA

## AC Electrical Characteristics $V_{CC} = 5V, T_A = 25^\circ C$

Symbol	Parameter	Conditions	Min	Typ	Max	Units
<b>A PORT DATA/MODE SPECIFICATIONS</b>						
$t_{PDHLA}$	Propagation Delay to a Logical "0" from B Port to A Port	$\bar{T} = 2.4V, \bar{R} = 0.4V$ (Figure A) $R1 = 1k, R2 = 5k, C1 = 30 \text{ pF}$		14	18	ns
$t_{PDLHA}$	Propagation Delay to a Logical "1" from B Port to A Port	$\bar{T} = 2.4V, \bar{R} = 0.4V$ (Figure A) $R1 = 1k, R2 = 5k, C1 = 30 \text{ pF}$		13	18	ns
$t_{PLZA}$	Propagation Delay from a Logical "0" to TRI-STATE from $\bar{R}$ to A Port	$B0 \text{ to } B7 = 0.4V, \bar{T} = 2.4V$ (Figure B) $S3 = 1, R5 = 1k, C4 = 15 \text{ pF}$		11	15	ns
$t_{PHZA}$	Propagation Delay from a Logical "1" to TRI-STATE from $\bar{R}$ to A Port	$B0 \text{ to } B7 = 2.4V, \bar{T} = 2.4V$ (Figure B) $S3 = 0, R5 = 1k, C4 = 15 \text{ pF}$		8	15	ns
$t_{PZLA}$	Propagation Delay from TRI-STATE to a Logical "0" from $\bar{R}$ to A Port	$B0 \text{ to } B7 = 0.4V, \bar{T} = 2.4V$ (Figure B) $S3 = 1, R5 = 1k, C4 = 30 \text{ pF}$		24	35	ns
$t_{PZHA}$	Propagation Delay from TRI-STATE to a Logical "1" from $\bar{R}$ to A Port	$B0 \text{ to } B7 = 2.4V, \bar{T} = 2.4V$ (Figure B) $S3 = 0, R5 = 5k, C4 = 30 \text{ pF}$		21	30	ns
<b>B PORT DATA/MODE SPECIFICATIONS</b>						
$t_{PDHLB}$	Propagation Delay to a Logical "0" from A Port to B Port	$\bar{T} = 0.4V, \bar{R} = 2.4V$ (Figure A)		18	23	ns
		$R1 = 100\Omega, R2 = 1k, C1 = 300 \text{ pF}$ $R1 = 667\Omega, R2 = 5k, C1 = 45 \text{ pF}$		11	18	ns
$t_{PDLHB}$	Propagation Delay to a Logical "1" from A Port to B Port	$\bar{T} = 0.4V, \bar{R} = 2.4V$ (Figure A)		16	23	ns
		$R1 = 100\Omega, R2 = 1k, C1 = 300 \text{ pF}$ $R1 = 667\Omega, R2 = 5k, C1 = 45 \text{ pF}$		11	18	ns
$t_{PLZB}$	Propagation Delay from a Logical "0" to TRI-STATE from $\bar{T}$ to B Port	$A0 \text{ to } A7 = 0.4V, \bar{R} = 2.4V$ (Figure B) $S3 = 1, R5 = 1k, C4 = 15 \text{ pF}$		13	18	ns
$t_{PHZB}$	Propagation Delay from a Logical "1" to TRI-STATE from $\bar{T}$ to B Port	$A0 \text{ to } A7 = 2.4V, \bar{R} = 2.4V$ (Figure B) $S3 = 0, R5 = 1k, C4 = 15 \text{ pF}$		8	15	ns
$t_{PZLB}$	Propagation Delay from TRI-STATE to a Logical "0" from $\bar{T}$ to B Port	$A0 \text{ to } A7 = 0.4V, \bar{R} = 2.4V$ (Figure B)		25	35	ns
		$S3 = 1, R5 = 100\Omega, C4 = 300 \text{ pF}$ $S3 = 1, R5 = 667\Omega, C4 = 45 \text{ pF}$		17	25	ns
$t_{PZHB}$	Propagation Delay from TRI-STATE to a Logical "1" from $\bar{T}$ to B Port	$A0 \text{ to } A7 = 2.4V, \bar{R} = 2.4V$ (Figure B)		24	35	ns
		$S3 = 0, R5 = 1k, C4 = 300 \text{ pF}$ $S3 = 0, R5 = 5k, C4 = 45 \text{ pF}$		17	25	ns

## AC Electrical Characteristics (Continued)

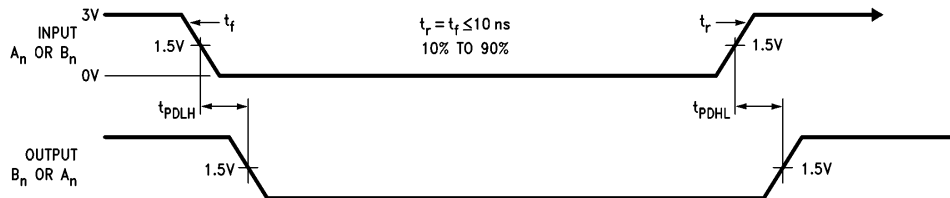
**Note 1:** "Absolute Maximum Ratings" are those values beyond which the safety of the device cannot be guaranteed. Except for "Operating Temperature Range" they are not meant to imply that the devices should be operated at these limits. The table of "Electrical Characteristics" provides conditions for actual device operation.

**Note 2:** Unless otherwise specified, min/max limits apply across the supply and temperature range listed in the table of Recommended Operating Conditions. All typical values given are for  $V_{CC} = 5V$  and  $T_A = 25^\circ C$ .

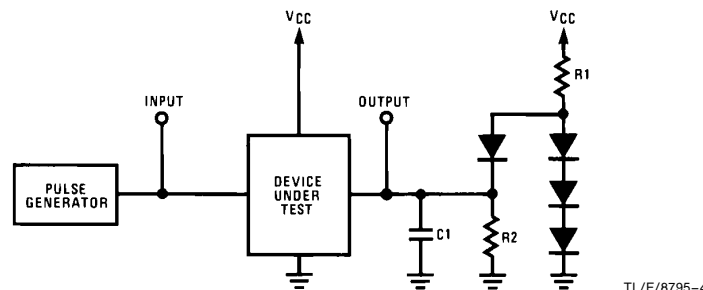
**Note 3:** All currents into device pins are positive; all currents out of device pins are negative. All voltages are referenced to ground unless otherwise specified.

**Note 4:** Only one output at a time should be shorted.

## Switching Time Waveforms and AC Test Circuits



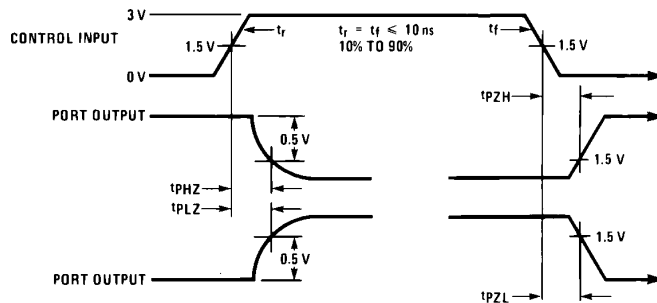
TL/F/8795-3



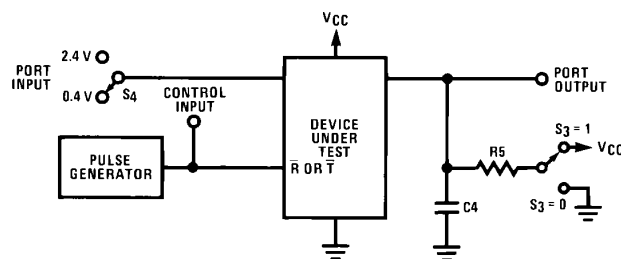
TL/F/8795-4

**Note:** C1 includes test fixture capacitance.

**FIGURE A. Propagation Delay from A Port to B Port or from B Port to A Port**

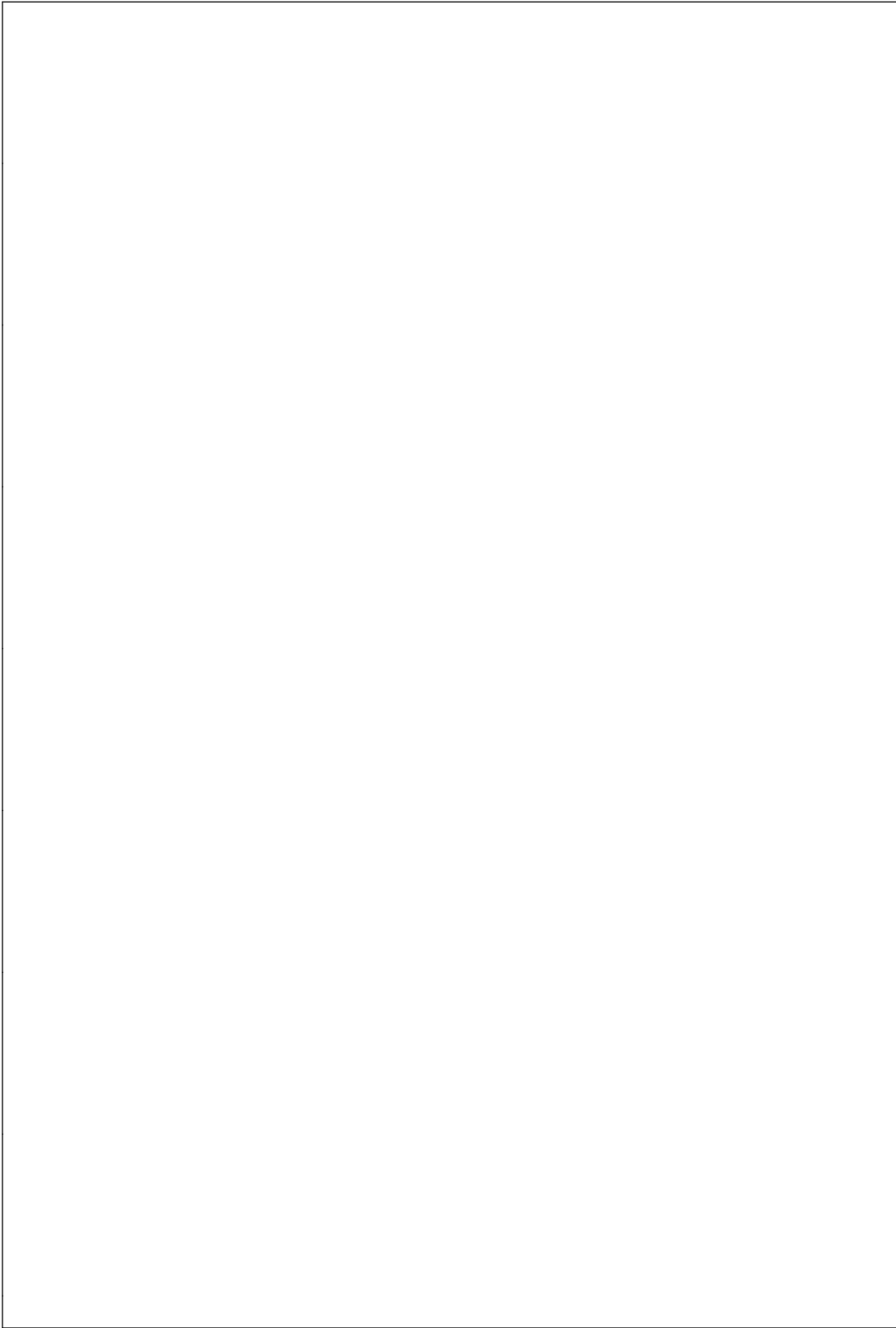


TL/F/8795-5



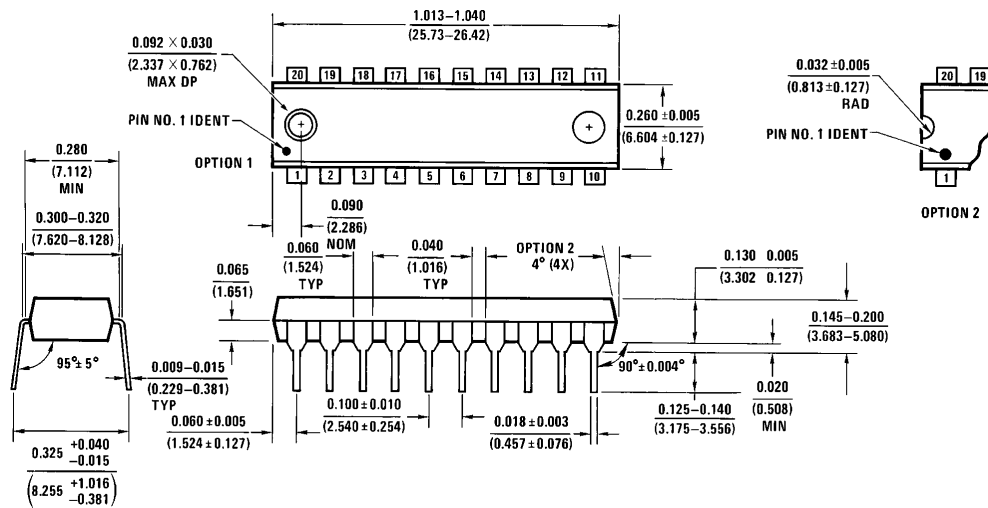
TL/F/8795-6

**Note:** C4 includes test fixture capacitance. Port input is in a fixed logical condition. See AC Table.  
**FIGURE B. Propagation Delay to/from TRI-STATE from R to A Port and T to B Port**



**DP8308 8-Bit TRI-STATE Bidirectional Transceiver (Non-Inverting)**

**Physical Dimensions** inches (millimeters)



**Molded Dual-In-Line Package (N)**  
**Order Number DP8308N**  
**NS Package Number N20A**

N20A (REV G)

**LIFE SUPPORT POLICY**

NATIONAL'S PRODUCTS ARE NOT AUTHORIZED FOR USE AS CRITICAL COMPONENTS IN LIFE SUPPORT DEVICES OR SYSTEMS WITHOUT THE EXPRESS WRITTEN APPROVAL OF THE PRESIDENT OF NATIONAL SEMICONDUCTOR CORPORATION. As used herein:

1. Life support devices or systems are devices or systems which, (a) are intended for surgical implant into the body, or (b) support or sustain life, and whose failure to perform, when properly used in accordance with instructions for use provided in the labeling, can be reasonably expected to result in a significant injury to the user.
2. A critical component is any component of a life support device or system whose failure to perform can be reasonably expected to cause the failure of the life support device or system, or to affect its safety or effectiveness.



**National Semiconductor Corporation**  
 1111 West Bardin Road  
 Arlington, TX 76017  
 Tel: (800) 272-9959  
 Fax: (800) 737-7018

<http://www.national.com>

**National Semiconductor Europe**

Fax: +49 (0) 180-530 85 86  
 Email: [europe.support@nsc.com](mailto:europe.support@nsc.com)  
 Deutsch Tel: +49 (0) 180-530 85 85  
 English Tel: +49 (0) 180-532 78 32  
 Français Tel: +49 (0) 180-532 93 58  
 Italiano Tel: +49 (0) 180-534 16 80

**National Semiconductor Hong Kong Ltd.**

19th Floor, Straight Block,  
 Ocean Centre, 5 Canton Rd.  
 Tsimshatsui, Kowloon  
 Hong Kong  
 Tel: (852) 2737-1600  
 Fax: (852) 2736-9960

**National Semiconductor Japan Ltd.**

Tel: 81-043-299-2308  
 Fax: 81-043-299-2408

National does not assume any responsibility for use of any circuitry described, no circuit patent licenses are implied and National reserves the right at any time without notice to change said circuitry and specifications.

# National Semiconductor was acquired by Texas Instruments.

[http://www.ti.com/corp/docs/investor\\_relations/pr\\_09\\_23\\_2011\\_national\\_semiconductor.html](http://www.ti.com/corp/docs/investor_relations/pr_09_23_2011_national_semiconductor.html)

This file is the datasheet for the following electronic components:

DP8308 - <http://www.ti.com/product/dp8308?HQS=TI-null-null-dscatalog-df-pf-null-ww>



LittleDiode supplies new, hard to find or obsolete electronic components and semiconductors all over the world.

With over two million different components listed you are sure to find the part you need.

Feel free to visit us today at our online store:

[LittleDiode.com](http://LittleDiode.com)

Looking forward to providing you with the best possible service.