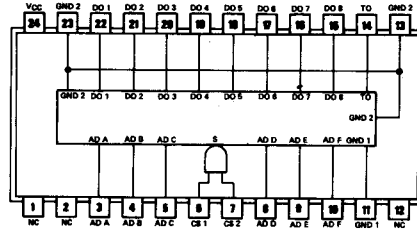


54/74 FAMILIES OF COMPATIBLE TTL CIRCUITS

PIN ASSIGNMENTS (TOP VIEWS)

512-BIT PROGRAMMABLE READ-ONLY MEMORIES

186 64 8-BIT WORDS
OPEN-COLLECTOR OUTPUTS

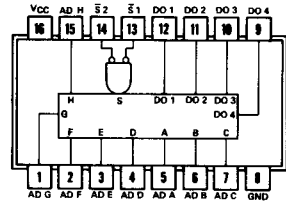


For more information contact the factory

~~SNS4186 (J, W)~~ ~~SN74186 (J, W)~~
NC - No internal connection

1024-BIT READ-ONLY MEMORIES

187 256 4-BIT WORDS
OPEN-COLLECTOR OUTPUTS



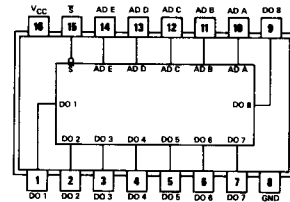
For more information contact the factory

~~SNS4187 (J, W)~~ ~~SN74187 (J, W)~~

256-BIT

188

SNS4187
Not
Located



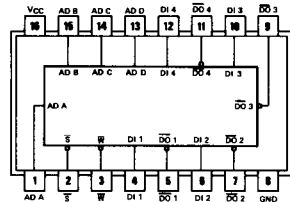
See Bij

dition.

~~SNS4188 (J, W)~~ ~~SN74188 (J, W)~~
(Redesignated TBP18SA030)

64-BIT

189



See Bipolar Microcomputer Components Data Book, second edition.

~~SNS4189 (J, W)~~ ~~SN74189 (J, W)~~

This datasheet has been downloaded from:

www.DatasheetCatalog.com

Datasheets for electronic components.

Texas Instruments

<http://www.ti.com>

This file is the datasheet for the following electronic components:

74188 - <http://www.ti.com/product/74188?HQS=TI-null-null-dscatalog-df-pf-null-wwe>

SN74186 - <http://www.ti.com/product/sn74186?HQS=TI-null-null-dscatalog-df-pf-null-wwe>

SN74188 - <http://www.ti.com/product/sn74188?HQS=TI-null-null-dscatalog-df-pf-null-wwe>



LittleDiode supplies new, hard to find or obsolete electronic components and semiconductors all over the world.

With over two million different components listed you are sure to find the part you need.

Feel free to visit us today at our online store:

LittleDiode.com

Looking forward to providing you with the best possible service.