

## DS96177 RS-485/RS-422 Differential Bus Repeater

### General Description

The DS96177 Differential Bus Repeater is a monolithic integrated device designed for one-way data communication on multipoint bus transmission lines. This device is designed for balanced transmission bus line applications and meets EIA Standard RS-485 and RS-422A. The device is designed to improve the performance of the data communication over long bus lines. The DS96177 has an active high Enable.

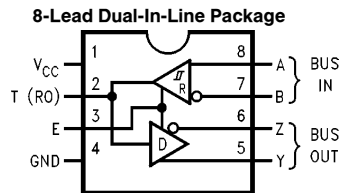
The DS96177 features positive and negative current limiting and TRI-STATE® outputs for the receiver and driver. The receiver features high input impedance, input hysteresis for increased noise immunity, and input sensitivity of 200 mV over a common mode input voltage range of  $-12V$  to  $+12V$ . The driver features thermal shutdown for protection from line fault conditions. Thermal shutdown is designed to occur at a junction temperature of approximately  $160^{\circ}C$ . The driver is designed to drive current loads up to 60 mA maximum.

The DS96177 is designed for optimum performance when used on transmission buses employing the DS96172 and DS96174 differential line drivers, DS96173 and DS96175 differential line receivers, or DS96176 differential bus transceivers.

### Features

- Meets EIA Standard RS-422A and RS-485
- Designed for multipoint transmission on long bus lines in noisy environments
- TRI-STATE outputs
- Bus voltage range  $-7.0V$  to  $+12V$
- Positive and negative current limiting
- Driver output capability  $\pm 60$  mA max
- Driver thermal shutdown protection
- Receiver input high impedance
- Receiver input sensitivity of  $\pm 200$  mV
- Receiver input hysteresis of 50 mV typical
- Operates from single 5.0V supply
- Low power requirements

### Connection Diagram



TL/F/9644-1

Top View

Order Number DS96177CN  
See NS Package Number N08E

### Function Table

Differential Inputs	Enable	Outputs		
		T	Y	Z
A-B	E	H	H	L
$V_{ID} \geq 0.2V$	H	H	H	L
$V_{ID} \leq -0.2V$	H	L	L	H
X	L	Z	Z	Z

Note: T is an output pin only, monitoring the BUS (RO).

H = High Level  
L = Low Level  
X = Immaterial  
Z = High Impedance (off)

TRI-STATE® is a registered trademark of National Semiconductor Corporation.

## Absolute Maximum Ratings (Note 1)

If Military/Aerospace specified devices are required, please contact the National Semiconductor Sales Office/Distributors for availability and specifications.

Storage Temperature Range	
Ceramic DIP	-65°C to +175°C
Molded DIP	-65°C to +150°C
Lead Temperature	
Ceramic DIP (Soldering, 60 sec.)	300°C
Molded DIP (Soldering, 10 sec.)	265°C
Maximum Power Dissipation* at 25°C	
Molded Package	930 mW
Supply Voltage	7.0V
Input Voltage	5.5V

\*Derate molded DIP package 7.5 mW/°C above 25°C.

## Recommended Operating Conditions

	Min	Typ	Max	Units
Supply Voltage ( $V_{CC}$ )	4.75	5.0	5.25	V
Voltage at any Bus Terminal (Separately or Common Mode) ( $V_I$ or $V_{CM}$ )	-7.0		12	V
Differential Input Voltage ( $V_{ID}$ )			±12	V
Output Current HIGH ( $I_{OH}$ )				
Driver			-60	mA
Receiver			-400	µA
Output Current LOW ( $I_{OL}$ )				
Driver			60	mA
Receiver			16	µA
Operating Temperature ( $T_A$ )	0	25	70	°C

**Electrical Characteristics** Over recommended temperature, common mode input voltage, and supply voltage ranges, unless otherwise specified (Notes 2 and 3)

### DRIVER SECTION

Symbol	Parameter	Conditions	Min	Typ	Max	Units
$V_{IH}$	Input Voltage HIGH		2.0			V
$V_{IL}$	Input Voltage LOW				0.8	V
$V_{IC}$	Input Clamp Voltage	$I_I = -18$ mA			-1.5	V
$ V_{OD1} $	Differential Output Voltage	$I_O = 0$ mA			6.0	V
$ V_{OD2} $	Differential Output Voltage	$R_L = 100\Omega$ , Figure 1	2.0	2.25		V
		$R_L = 54\Omega$ , Figure 1 and 2	1.5	2.0		
$\Delta V_{OD2} $	Change in Magnitude of Differential Output Voltage (Note 4)	$R_L = 100\Omega$ , Figure 1 $R_L = 54\Omega$ , Figure 1 and 2   $V_{CM} = 0V$			±0.2	V
$V_{OC}$	Common Mode Output Voltage (Note 5)	$R_L = 54\Omega$ or $100\Omega$ Figure 1			3.0	V
$\Delta V_{OC} $	Change in Magnitude of Common Mode Output Voltage (Note 4)				±0.2	V
$I_O$	Output Current with Power Off	$V_{CC} = 0V$ , $V_O = -7.0V$ to $+12V$			±100	µA
$I_{OZ}$	High Impedance State Output Current	$V_O = -7.0V$ to $+12V$		±50	±200	µA
$I_{IH}$	Input Current HIGH	$V_I = 2.7V$			20	µA
$I_{IL}$	Input Current LOW	$V_I = 0.5V$			-100	µA
$I_{OS}$	Short Circuit Output Current (Note 9)	$V_O = -7.0V$			-250	mA
		$V_O = 0V$			-150	
		$V_O = V_{CC}$			150	
		$V_O = 12V$			250	
$I_{CC}$	Supply Current	No Load	Outputs Enabled		35	mA
			Outputs Disabled		40	

### RECEIVER SECTION

Symbol	Parameter	Conditions	Min	Typ	Max	Units
$V_{TH}$	Differential Input High Threshold Voltage	$V_O = 2.7V$ , $I_O = -0.4$ mA			0.2	V
$V_{TL}$	Differential Input Low Threshold Voltage (Note 6)	$V_O = 0.5V$ , $I_O = 8.0$ mA	-0.2			V
$V_{T+} - V_{T-}$	Hysteresis (Note 7)	$V_{CM} = 0V$		50		mV
$V_{IH}$	Enable Input Voltage HIGH		2.0			V
$V_{IL}$	Enable Input Voltage LOW				0.8	V
$V_{IC}$	Enable Input Clamp Voltage	$I_I = -18$ mA			-1.5	V

## Electrical Characteristics (Continued)

Over recommended temperature, common mode input voltage, and supply voltage ranges, unless otherwise specified

### RECEIVER SECTION (Continued)

Symbol	Parameter	Conditions	Min	Typ	Max	Units
V <sub>OH</sub>	High Level Output Voltage	V <sub>ID</sub> = 200 mV, I <sub>OH</sub> = -400 μA, <i>Figure 3</i>	2.7			V
V <sub>OL</sub>	Low Level Output Voltage	V <sub>ID</sub> = -200 mV, <i>Figure 3</i>	I <sub>OL</sub> = 8.0 mA		0.45	V
			I <sub>OL</sub> = 16 mA		0.50	
I <sub>OZ</sub>	High-Impedance State Output	V <sub>O</sub> = 0.4V			-360	μA
		V <sub>O</sub> = 2.4V			20	
I <sub>I</sub>	Line Input Current (Note 8)	Other Input = 0V	V <sub>I</sub> = 12V		1.0	mA
			V <sub>I</sub> = -7.0V		-0.8	
I <sub>IH</sub>	Enable Input Current HIGH	V <sub>IH</sub> = 2.7V			20	μA
I <sub>IL</sub>	Enable Input Current LOW	V <sub>IL</sub> = 0.4V			-100	μA
R <sub>I</sub>	Input Resistance			12		kΩ
I <sub>OS</sub>	Short Circuit Output Current	(Note 9)	-15		-85	mA
I <sub>CC</sub>	Supply Current (Total Package)	No Load	Outputs Enabled		35	mA
			Outputs Disabled		40	

### Drive Switching Characteristics V<sub>CC</sub> = 5.0V, T<sub>A</sub> = 25°C

Symbol	Parameter	Conditions	Min	Typ	Max	Units
t <sub>DD</sub>	Differential Output Delay Time	R <sub>L</sub> = 60Ω, <i>Figure 4</i>		15	25	ns
t <sub>TD</sub>	Differential Output Transition Time	R <sub>L</sub> = 60Ω, <i>Figure 4</i>		15	25	ns
t <sub>PLH</sub>	Propagation Delay Time, Low-to-High Level Output	R <sub>L</sub> = 27Ω, <i>Figure 5</i>		12	20	ns
t <sub>PHL</sub>	Propagation Delay Time, High-to-Low Level Output	R <sub>L</sub> = 27Ω, <i>Figure 5</i>		12	20	ns
t <sub>PZH</sub>	Output Enable Time to High Level	R <sub>L</sub> = 110Ω, <i>Figure 6</i>		25	45	ns
t <sub>PZL</sub>	Output Enable Time to Low Level	R <sub>L</sub> = 110Ω, <i>Figure 7</i>		25	40	ns
t <sub>PHZ</sub>	Output Disable Time from High Level	R <sub>L</sub> = 110Ω, <i>Figure 6</i>		20	25	ns
t <sub>PLZ</sub>	Output Disable Time from Low Level	R <sub>L</sub> = 110Ω, <i>Figure 7</i>		29	35	ns

### Receiver Switching Characteristics V<sub>CC</sub> = 5.0V, T<sub>A</sub> = 25°C

Symbol	Parameter	Conditions	Min	Typ	Max	Units
t <sub>PLH</sub>	Propagation Delay Time, Low-to-High Level Output	V <sub>ID</sub> = 0V to 3.0V, C <sub>L</sub> = 15 pF, <i>Figure 8</i>		16	25	ns
t <sub>PHL</sub>	Propagation Delay Time, High-to-Low Level Output			16	25	ns
t <sub>PZH</sub>	Output Enable Time to High Level	C <sub>L</sub> = 15 pF, <i>Figure 9</i>		15	22	ns
t <sub>PZL</sub>	Output Enable Time to Low Level			15	22	ns
t <sub>PHZ</sub>	Output Disable Time from High Level	C <sub>L</sub> = 5.0 pF, <i>Figure 9</i>		14	30	ns
t <sub>PLZ</sub>	Output Disable Time from Low Level			24	40	ns

**Note 1:** "Absolute Maximum Ratings" are those values beyond which the safety of the device cannot be guaranteed. They are not meant to imply that the devices should be operated at these limits. The tables of "Electrical Characteristics" provide conditions for actual device operation.

**Note 2:** Unless otherwise specified Min/Max limits apply across the 0°C to +70°C range for the DS96177. All typicals are given for  $V_{CC} = 5V$  and  $T_A = 25^\circ C$ .

**Note 3:** All currents into the device pins are positive; all currents out of the device pins are negative. All voltages are referenced to ground unless otherwise specified.

**Note 4:**  $\Delta|V_{OD}|$  and  $\Delta|V_{OC}|$  are the changes in magnitude of  $V_{OD}$ ,  $V_{OC}$  respectively, that occur when the input is changed from a high level to a low level.

**Note 5:** In EIA Standards RS-422A and RS-485,  $V_{OC}$ , which is the average of the two output voltages with respect to ground, is called output offset voltage,  $V_{OS}$ .

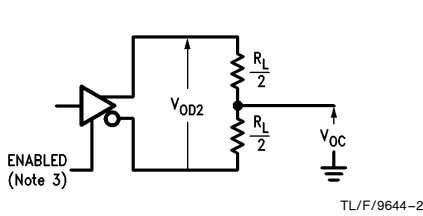
**Note 6:** The algebraic convention, when the less positive (more negative) limit is designated minimum, is used in this data sheet for common mode input voltage and threshold voltage levels only.

**Note 7:** Hysteresis is the difference between the positive-going input threshold voltage,  $V_{T+}$ , and the negative going input threshold voltage,  $V_{T-}$ .

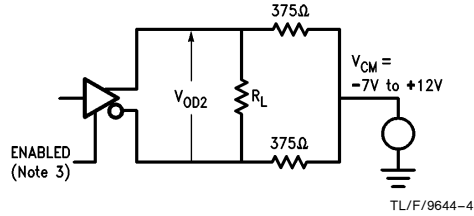
**Note 8:** Refer to EIA Standards RS-485 for exact conditions.

**Note 9:** Only one output at a time should be shorted.

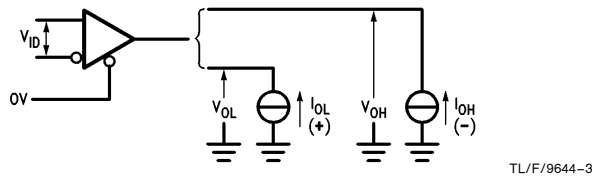
## Parameter Measurement Information



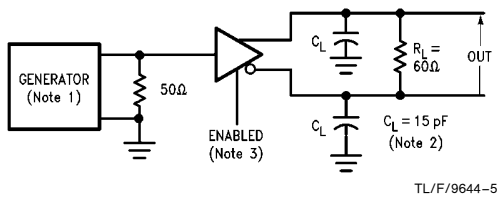
**FIGURE 1. Driver  $V_{OD2}$  and  $V_{OC}$**



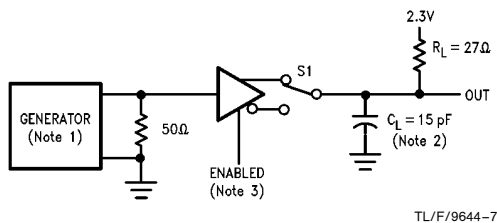
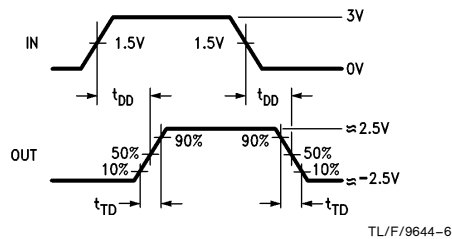
**FIGURE 2. Driver  $V_{OD2}$  with Varying Common Mode Voltage**



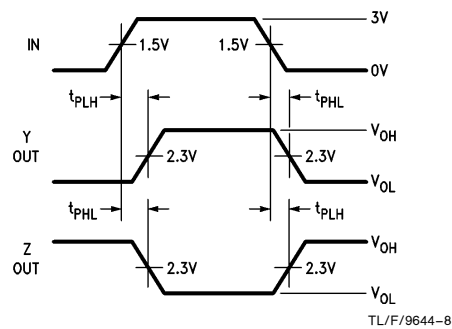
**FIGURE 3. Receiver  $V_{OH}$  and  $V_{OL}$**



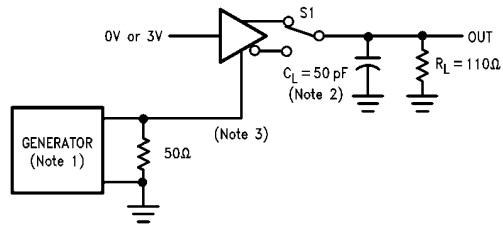
**FIGURE 4. Driver Differential Output Delay and Transition Times**



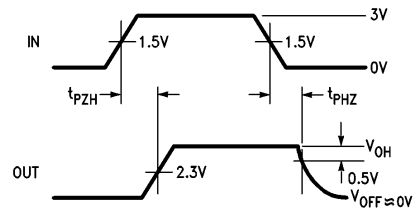
**FIGURE 5. Drive Propagation Times**



## Parameter Measurement Information (Continued)

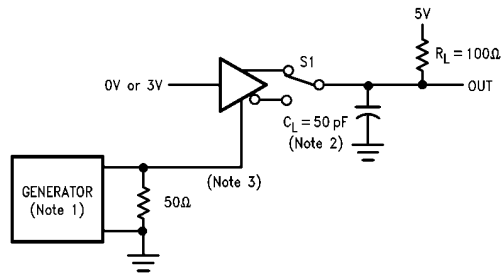


TL/F/9644-9

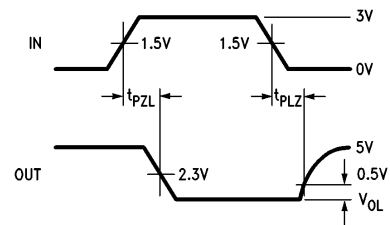


TL/F/9644-10

FIGURE 6. Driver Enable and Disable Times ( $t_{PZH}$ ,  $t_{PHZ}$ )

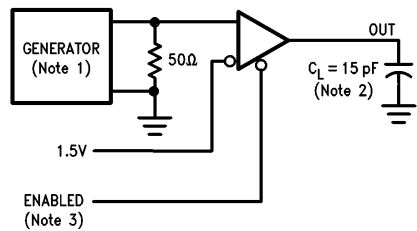


TL/F/9644-11

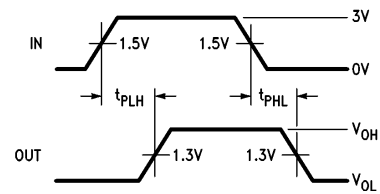


TL/F/9644-12

FIGURE 7. Driver Enable and Disable Times ( $t_{PZL}$ ,  $t_{PLZ}$ )



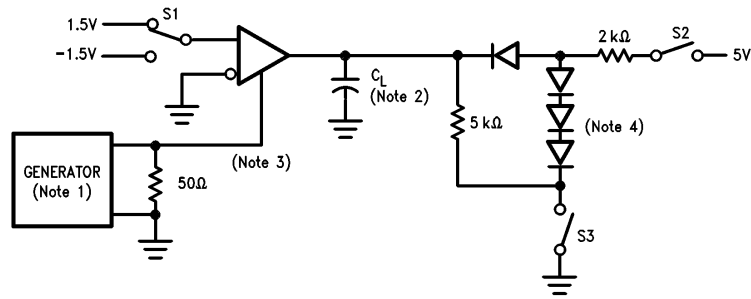
TL/F/9644-13



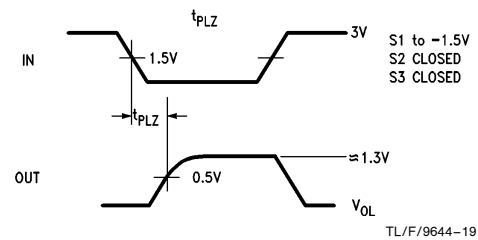
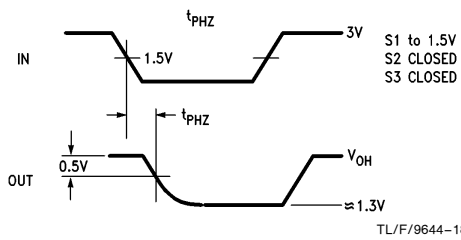
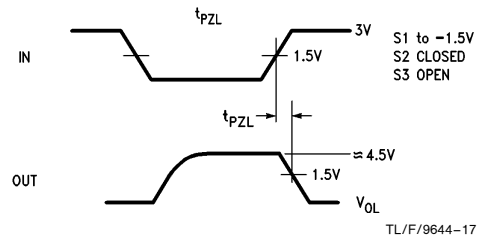
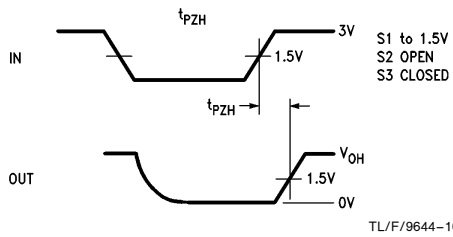
TL/F/9644-14

FIGURE 8. Receiver Propagation Delay Times

## Parameter Measurement Information (Continued)



TL/F/9644-15



**FIGURE 9. Receiver Enable and Disable Times**

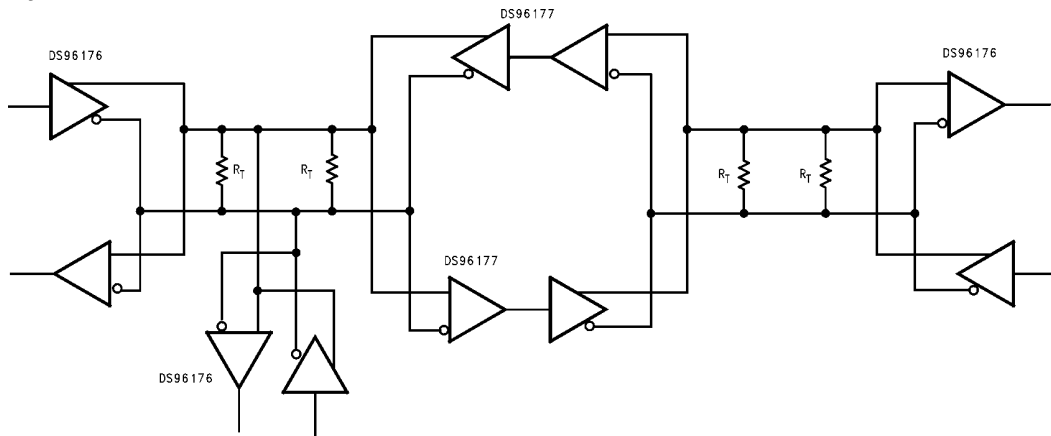
**Note 1:** The input pulse is supplied by a generator having the following characteristics: PRR = 1.0 MHz, duty cycle  $\approx$  50%,  $t_r \leq 6.0$  ns,  $t_f \leq 6.0$  ns,  $Z_O = 50\Omega$ .

**Note 2:**  $C_L$  includes probe and stray capacitance.

**Note 3:** DS96177 Enable is active high.

**Note 4:** All diodes are 1N916 or equivalent.

## Typical Application



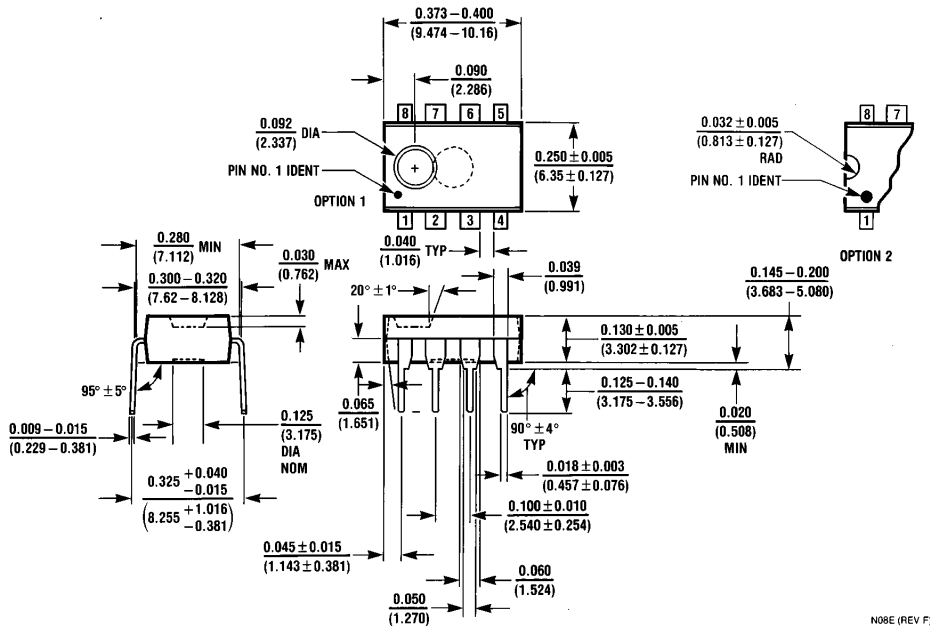
TL/F/9644-20

### Notes:

- The line length should be terminated at both ends in its characteristic impedance.
- Stub lengths off the main line should be kept as short as possible.
- Repeater control logic not shown

FIGURE 10

**Physical Dimensions** inches (millimeters)



**Molded Dual-In-Line Package (N)**  
**Order Number DS96177CN**  
**NS Package Number N08E**

N08E (REV F)

**LIFE SUPPORT POLICY**

NATIONAL'S PRODUCTS ARE NOT AUTHORIZED FOR USE AS CRITICAL COMPONENTS IN LIFE SUPPORT DEVICES OR SYSTEMS WITHOUT THE EXPRESS WRITTEN APPROVAL OF THE PRESIDENT OF NATIONAL SEMICONDUCTOR CORPORATION. As used herein:

1. Life support devices or systems are devices or systems which, (a) are intended for surgical implant into the body, or (b) support or sustain life, and whose failure to perform, when properly used in accordance with instructions for use provided in the labeling, can be reasonably expected to result in a significant injury to the user.
2. A critical component is any component of a life support device or system whose failure to perform can be reasonably expected to cause the failure of the life support device or system, or to affect its safety or effectiveness.



**National Semiconductor Corporation**  
 1111 West Bardin Road  
 Arlington, TX 76017  
 Tel: 1(800) 272-9959  
 Fax: 1(800) 737-7018

<http://www.national.com>

**National Semiconductor Europe**

Fax: +49 (0) 180-530 85 86  
 Email: [europe.support@nsc.com](mailto:europe.support@nsc.com)  
 Deutsch Tel: +49 (0) 180-530 85 85  
 English Tel: +49 (0) 180-532 78 32  
 Français Tel: +49 (0) 180-532 93 58  
 Italiano Tel: +49 (0) 180-534 16 80

**National Semiconductor Hong Kong Ltd.**

19th Floor, Straight Block,  
 Ocean Centre, 5 Canton Rd.  
 Tsimshatsui, Kowloon  
 Hong Kong  
 Tel: (852) 2737-1600  
 Fax: (852) 2736-9960

**National Semiconductor Japan Ltd.**

Tel: 81-043-299-2308  
 Fax: 81-043-299-2408

National does not assume any responsibility for use of any circuitry described, no circuit patent licenses are implied and National reserves the right at any time without notice to change said circuitry and specifications.

# National Semiconductor was acquired by Texas Instruments.

[http://www.ti.com/corp/docs/investor\\_relations/pr\\_09\\_23\\_2011\\_national\\_semiconductor.html](http://www.ti.com/corp/docs/investor_relations/pr_09_23_2011_national_semiconductor.html)

This file is the datasheet for the following electronic components:

DS96177 - <http://www.ti.com/product/ds96177?HQS=TI-null-null-dscatalog-df-pf-null-ww>



LittleDiode supplies new, hard to find or obsolete electronic components and semiconductors all over the world.

With over two million different components listed you are sure to find the part you need.

Feel free to visit us today at our online store:

[LittleDiode.com](http://LittleDiode.com)

Looking forward to providing you with the best possible service.