

# K4N29 • K4N29A

These Photocouplers consist of a Gallium Arsenide Infrared Emitting Diode and a Silicon NPN Photo Darlington transistor in a 6-pin package.

**FEATURES**

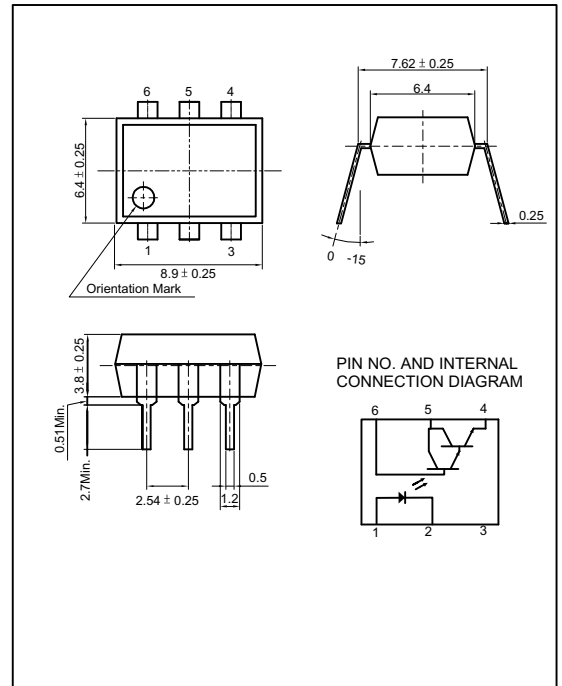
- Small Package Size
- Collector-Emitter Voltage : Min.30V
- Current Transfer Ratio : Type 1000% (at  $I_F=10\text{mA}$ ,  $V_{CE}=10\text{V}$ )
- Electrical Isolation Voltage : AC2500V<sub>rms</sub>
- UL Recognized File No. E107486

**APPLICATIONS**

- Interface between two circuits of different potential
- Telephone Line Receiver, CMOS Logic Interface
- Power Supply Regulators

**DIMENSION**

(Unit : mm)



**MAXIMUM RATINGS**

( $T_a=25$  )

| Parameter                                       |                                     | Symbol     | Rating   | Unit             |
|---|-------------------------------------|------------|----------|------------------|
| Input   | Forward Current                     | $I_F$      | 80       | mA               |
|   | Reverse Voltage                     | $V_R$      | 5        | V                |
|   | Peak Forward Current <sup>*1</sup>  | $I_{FP}$   | 3        | A                |
|   | Power Dissipation                   | $P_D$      | 150      | mW               |
| Output  | Collector-Emitter Breakdown Voltage | $BV_{CEO}$ | 30       | V                |
|   | Emitter-Collector Breakdown Voltage | $BV_{ECO}$ | 5        | V                |
|   | Collector-Base Breakdown Voltage    | $BV_{ECO}$ | 30       | V                |
|   | Collector Current                   | $I_C$      | 100      | mA               |
|   | Collector Power Dissipation         | $P_C$      | 150      | mW               |
| Input to Output Isolation Voltage <sup>*2</sup> |                                     | $V_{iso}$  | AC2500   | V <sub>rms</sub> |
| Storage Temperature                             |                                     | $T_{stg}$  | -55~+125 |                  |
| Operating Temperature                           |                                     | $T_{opr}$  | -30~+100 |                  |
| Lead Soldering Temperature <sup>*3</sup>        |                                     | $T_{sol}$  | 260      |                  |
| Total Power Dissipation                         |                                     | $P_{tot}$  | 250      | mW               |

\*1. Input current with 300μs pulse width, 2% duty cycle  
 \*2. Measured at RH=40~60% for 1min  
 \*3. 1/16 inch form case for 10sec

## K4N29 • K4N29A

### ELECTRO-OPTICAL CHARACTERISTICS

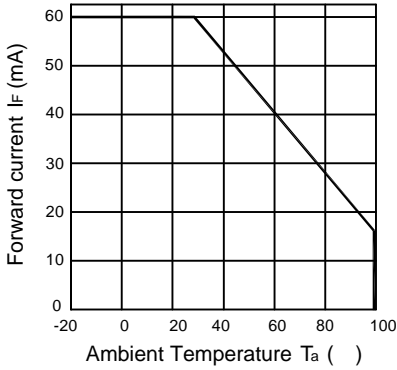
(Ta=25 , unless otherwise noted)

| Parameter |                                      | Symbol               | Condition                                   | Min. | Typ.             | Max. | Unit. |
|-----------|--------------------------------------|----------------------|---|------|------------------|------|-------|
| Input     | Forward Voltage                      | V <sub>F</sub>       | I <sub>F</sub> =10mA                        | -    | 1.15             | 1.30 | V     |
|           | Reverse Current                      | I <sub>R</sub>       | V <sub>R</sub> =5V                          | -    | -                | 10   | μA    |
|           | Capacitance                          | C <sub>T</sub>       | V=0, f=1MHz                                 | -    | 30               | -    | pF    |
| Output    | Collector-Emitter Breakdown Voltage  | BV <sub>CEO</sub>    | I <sub>C</sub> =1mA                         | 35   | -                | -    | V     |
|           | Emitter-Collector Breakdown Voltage  | BV <sub>ECO</sub>    | I <sub>E</sub> =0.1mA                       | 5    | -                | -    | V     |
|           | Collector-Base Breakdown Voltage     | BV <sub>CBO</sub>    | I <sub>C</sub> =0.1mA                       | 30   | -                | -    | V     |
|           | Collector Dark Current               | I <sub>CEO</sub>     | I <sub>F</sub> =0, V <sub>CE</sub> =10V     | -    | -                | 100  | nA    |
|           | Capacitance                          | C <sub>CE</sub>      | V <sub>CE</sub> =0, f=1MHz                  | -    | 10               | -    | pF    |
| Coupled   | Current Transfer Ratio <sup>*4</sup> | CTR                  | I <sub>F</sub> =10mA, V <sub>CE</sub> =10V  | 100  | -                | -    | %     |
|           | Collector-Emitter Saturation Voltage | V <sub>CE(SAT)</sub> | I <sub>F</sub> =50mA, I <sub>C</sub> =2mA   | -    | -                | 1.0  | V     |
|           | Input-Output Capacitance             | C <sub>IO</sub>      | V=0, f=1MHz                                 | -    | 1                | -    | pF    |
|           | Input-Output Isolation Resistance    | R <sub>IO</sub>      | RH=40~60%, V=500V                           | -    | 10 <sup>11</sup> | -    |       |
|           | Turn-on Time                         | t <sub>on</sub>      | V <sub>CC</sub> =10V, R <sub>L</sub> =100   | -    | -                | 5    | μs    |
|           | Turn-off Time                        | t <sub>off</sub>     | I <sub>C</sub> =50mA, I <sub>F</sub> =200mA | -    | -                | 40   | μs    |

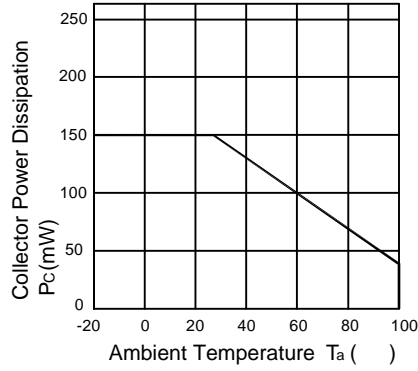
\*4. CTR=(I<sub>C</sub>/I<sub>F</sub>) X 100 (%)

**K4N29 • K4N29A**

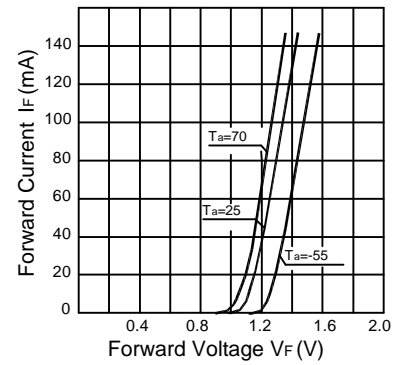
**Forward Current vs. Ambient Temperature**



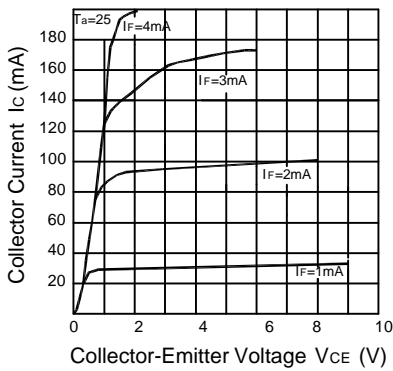
**Collector Power Dissipation vs. Ambient Temperature**



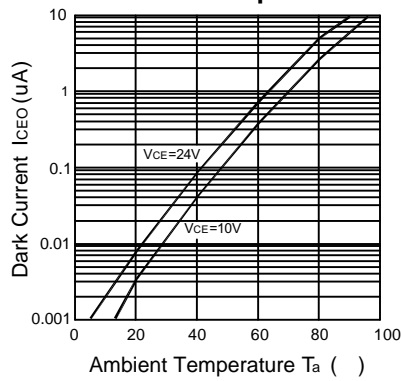
**Forward Current vs. Forward Voltage**



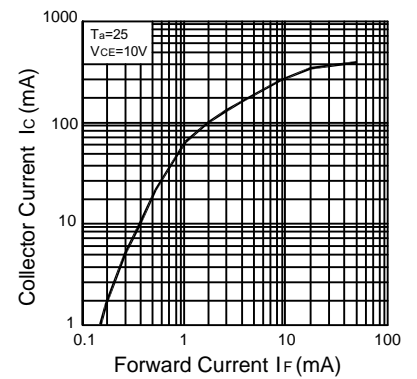
**Collector Current vs. Collector-Emitter Voltage**



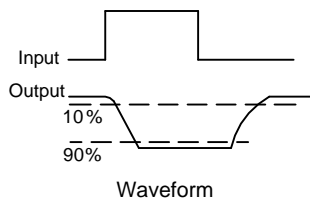
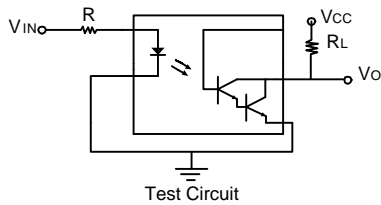
**Dark Current vs. Ambient Temperature**



**Collector Current vs. Forward Current**



**Switching Time Test Circuit**



This datasheet has been downloaded from:

[www.DatasheetCatalog.com](http://www.DatasheetCatalog.com)

Datasheets for electronic components.



LittleDiode supplies new, hard to find or obsolete electronic components and semiconductors all over the world.

With over two million different components listed you are sure to find the part you need.

Feel free to visit us today at our online store:

[LittleDiode.com](http://LittleDiode.com)

Looking forward to providing you with the best possible service.