

## DM74S240, DM74S241, DM74S244 Octal 3-STATE Buffer/Line Driver/Line Receiver

### General Description

These buffers/line drivers are designed to improve both the performance and PC board density of 3-STATE buffers/drivers employed as memory-address drivers, clock drivers, and bus-oriented transmitters/receivers. Featuring 400 mV of hysteresis at each low current PNP data line input, they provide improved noise rejection and high fanout outputs, and can be used to drive terminated lines down to 133Ω.

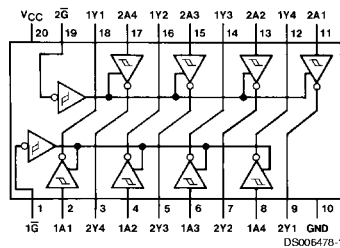
### Features

- 3-STATE outputs drive bus lines directly
- PNP inputs reduce DC loading on bus lines

- Hysteresis at data inputs improves noise margins
- Typical  $I_{OL}$  (sink current)  
74S 64 mA
- Typical  $I_{OH}$  (source current)  
74S -15 mA
- Typical propagation delay times  
Inverting 4.5 ns  
Noninverting 6 ns
- Typical enable/disable times 9 ns
- Typical power dissipation (enabled)  
Inverting 450 mW  
Noninverting 538 mW

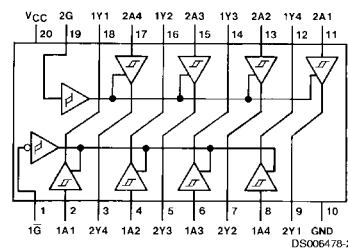
### Connection Diagrams

Dual-In-Line Package



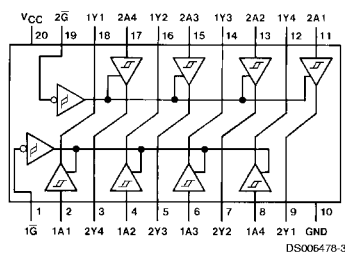
Order Number DM74S240N  
See Package Number N20A  
Dual-In-Line Package

Dual-In-Line Package



Order Number DM74S241N  
See Package Number N20A

Dual-In-Line Package



Order Number DM74S244N  
See Package Number N20A

DM74S240, DM74S241, DM74S244 Octal 3-STATE Buffer/Line Driver/Line Receiver

## Absolute Maximum Ratings (Note 1)

Supply Voltage  
Input Voltage

7V  
5.5V

Operating Free Air Temperature Range  
DM74S  
Storage Temperature Range

0°C to +70°C  
-65°C to +150°C

## Recommended Operating Conditions

Symbol	Parameter	Min	Typ	Max	Units
V <sub>CC</sub>	Supply Voltage	4.75	5	5.25	V
V <sub>IH</sub>	High Level Input Voltage	2			V
V <sub>IL</sub>	Low Level Input Voltage			0.8	V
I <sub>OH</sub>	High Level Output Current			-15	mA
I <sub>OL</sub>	Low Level Output Current			64	mA
T <sub>A</sub>	Free Air Operating Temperature	0		70	°C

**Note 1:** The "Absolute Maximum Ratings" are those values beyond which the safety of the device cannot be guaranteed. The device should not be operated at these limits. The parametric values defined in the "Electrical Characteristics" table are not guaranteed at the absolute maximum ratings. The "Recommended Operating Conditions" table will define the conditions for actual device operation.

## Electrical Characteristics

over recommended operating free-air temperature range (unless otherwise noted)

Symbol	Parameter	Conditions	Min	Typ (Note 2)	Max	Units	
V <sub>I</sub>	Input Clamp Voltage	V <sub>CC</sub> = Min, I <sub>I</sub> = -18 mA			-1.2	V	
H <sub>ys</sub>	Hysteresis (V <sub>T+</sub> - V <sub>T-</sub> ) (Data Inputs Only)	V <sub>CC</sub> = Min	0.2	0.4		V	
V <sub>OH</sub>	High Level Output Voltage	V <sub>CC</sub> = 4.75V, V <sub>IH</sub> = 2V V <sub>IL</sub> = 0.8V, I <sub>OH</sub> = -1 mA	2.7			V	
		V <sub>CC</sub> = Min, V <sub>IH</sub> = 2V V <sub>IL</sub> = 0.8V, I <sub>OH</sub> = -3 mA	2.4	3.4			
		V <sub>CC</sub> = Min, V <sub>IH</sub> = 2V V <sub>IL</sub> = 0.5V, I <sub>OH</sub> = Max	2				
V <sub>OL</sub>	Low Level Output Voltage	V <sub>CC</sub> = Min I <sub>OL</sub> = Max V <sub>IL</sub> = 0.8V, V <sub>IH</sub> = 2V			0.55	V	
I <sub>ozH</sub>	Off-State Output Current, High Level Voltage Applied	V <sub>CC</sub> = Max V <sub>IL</sub> = 0.8V			50	μA	
I <sub>ozL</sub>	Off-State Output Current, Low Level Voltage Applied	V <sub>IH</sub> = 2V			-50	μA	
I <sub>I</sub>	Input Current at Maximum Input Voltage	V <sub>CC</sub> = Max V <sub>I</sub> = 5.5V			1	mA	
I <sub>IH</sub>	High Level Input Current	V <sub>CC</sub> = Max V <sub>I</sub> = 2.7V			50	μA	
I <sub>IL</sub>	Low Level Input Current	V <sub>CC</sub> = Max V <sub>I</sub> = 0.5V			-400	μA	
		Any A Any G			-2	mA	
I <sub>OS</sub>	Short Circuit Output Current	V <sub>CC</sub> = Max (Note 3)	-50		-225	mA	
I <sub>CC</sub>	Supply Current	Outputs High	S240		80	135	mA
			S241, 244		95	160	
		Outputs Low	S240		100	150	
			S241, 244		120	180	
		Outputs Disabled	S240		100	150	
			S241, 244		120	180	

**Note 2:** All typical values are at V<sub>CC</sub> = 5V, T<sub>A</sub> = 25°C.

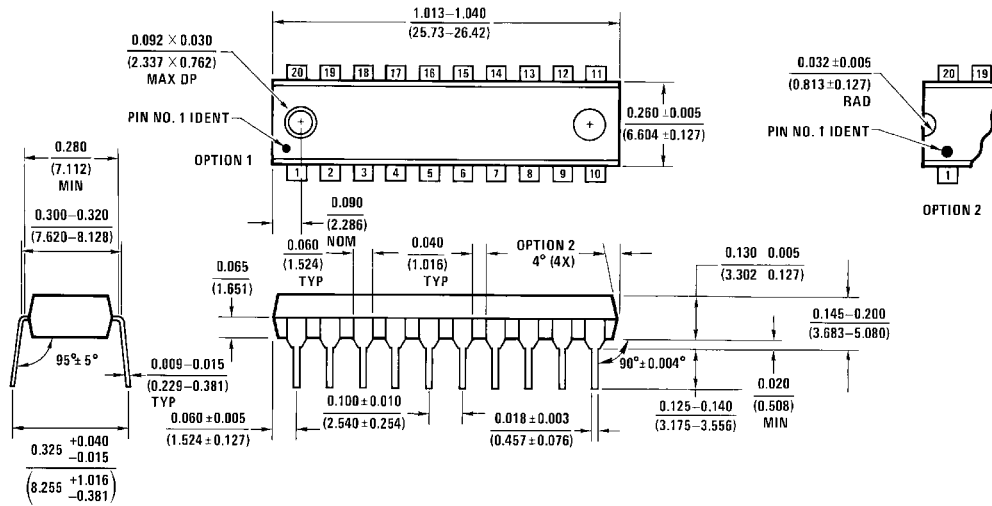
**Note 3:** Not more than one output should be shorted at a time and duration should not exceed one second.

### Switching Characteristics:

for test waveforms and output load.  $V_{CC} = 5V$ ,  $T_A = 25^\circ C$

Symbol	Parameter	Conditions	Min	Max	Units	
$t_{PLH}$	Propagation Delay Time Low to High Level Output	$C_L = 45 \text{ pF}$ $R_L = 90\Omega$	S240	2	7	ns
			S241, 244	2	9	
$t_{PHL}$	Propagation Delay Time High to Low Level Output	$C_L = 45 \text{ pF}$ $R_L = 90\Omega$	S240	2	7	ns
			S241, 244	2	9	
$t_{PZL}$	Output Enable Time to Low Level	$C_L = 45 \text{ pF}$ $R_L = 90\Omega$	S240	3	15	ns
			S241, 244	3	15	
$t_{PZH}$	Output Enable Time to High Level	$C_L = 45 \text{ pF}$ $R_L = 90\Omega$	S240	2	10	ns
			S241, 244	3	12	
$t_{PLZ}$	Output Disable Time from Low Level	$C_L = 5 \text{ pF}$ $R_L = 90\Omega$	S240	4	15	ns
			S241, 244	2	15	
$t_{PHZ}$	Output Disable Time from High Level	$C_L = 5 \text{ pF}$ $R_L = 90\Omega$	S240	2	9	ns
			S241, 244	2	9	
$t_{PLH}$	Propagation Delay Time Low to High Level Output	$C_L = 150 \text{ pF}$ $R_L = 90\Omega$	S240	3	10	ns
			S241, 244	4	12	
$t_{PHL}$	Propagation Delay Time High to Low Level Output	$C_L = 150 \text{ pF}$ $R_L = 90\Omega$	S240	3	10	ns
			S241, 244	4	12	
$t_{PZL}$	Output Enable Time to Low Level	$C_L = 150 \text{ pF}$ $R_L = 90\Omega$	S240	6	21	ns
			S241, 244	6	21	
$t_{PZH}$	Output Enable Time to High Level	$C_L = 150 \text{ pF}$ $R_L = 90\Omega$	S240	4	12	ns
			S241, 244	4	15	

**Physical Dimensions** inches (millimeters) unless otherwise noted



**20-Lead Molded Dual-In-Line Package (N)**  
**Order Numbers DM74S240N, DM74S241N or DM74S244N**  
**Package Number N20A**

N20A (REV G)

**LIFE SUPPORT POLICY**

FAIRCHILD'S PRODUCTS ARE NOT AUTHORIZED FOR USE AS CRITICAL COMPONENTS IN LIFE SUPPORT DEVICES OR SYSTEMS WITHOUT THE EXPRESS WRITTEN APPROVAL OF THE PRESIDENT OF FAIRCHILD SEMICONDUCTOR CORPORATION. As used herein:

1. Life support devices or systems are devices or systems which, (a) are intended for surgical implant into the body, or (b) support or sustain life, and (c) whose failure to perform when properly used in accordance with instructions for use provided in the labeling, can be reasonably expected to result in a significant injury to the user.
2. A critical component in any component of a life support device or system whose failure to perform can be reasonably expected to cause the failure of the life support device or system, or to affect its safety or effectiveness.

Fairchild Semiconductor Corporation  
 Americas  
 Customer Response Center  
 Tel: 1-888-522-5372

Fairchild Semiconductor Europe  
 Fax: +49 (0) 1 80-530 85 86  
 Email: europe.support@nsc.com  
 Deutsch Tel: +49 (0) 8 141-35-0  
 English Tel: +44 (0) 1 793-85-68-56  
 Italy Tel: +39 (0) 2 57 5631

Fairchild Semiconductor Hong Kong Ltd.  
 13th Floor, Straight Block,  
 Ocean Centre, 5 Canton Rd.  
 Tsimshatsui, Kowloon  
 Hong Kong  
 Tel: +852 2737-7200  
 Fax: +852 2314-0061

National Semiconductor Japan Ltd.  
 Tel: 81-3-5620-6175  
 Fax: 81-3-5620-6179

www.fairchildsemi.com

This datasheet has been downloaded from:

[www.DatasheetCatalog.com](http://www.DatasheetCatalog.com)

Datasheets for electronic components.



LittleDiode supplies new, hard to find or obsolete electronic components and semiconductors all over the world.

With over two million different components listed you are sure to find the part you need.

Feel free to visit us today at our online store:

[LittleDiode.com](http://LittleDiode.com)

Looking forward to providing you with the best possible service.