

**3V FM IF/AM TUNER SYSTEM**

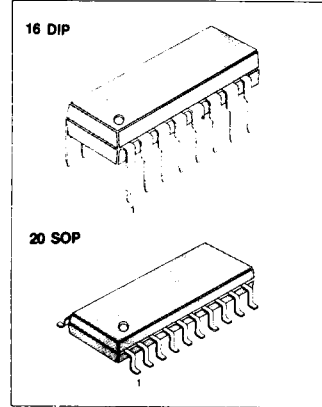
The KA2248 is a monolithic integrated circuit developed for the headphone stereo.

**FUNCTIONS**

- AM SECTION: Converter, IF amplifier, Detector, Tuning indicator
- FM SECTION: IF amplifier, Quadrature detector, Tuning indicator

**FEATURES**

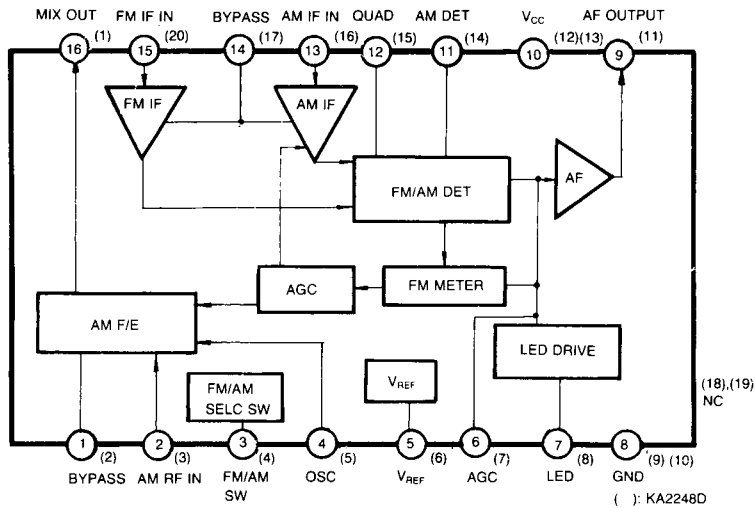
- Low quiescent current: AM:  $I_{CCQ} = 3\text{mA (Typ)}$ ,  $V_{CC} = 3\text{V}$   
 FM:  $I_{CCQ} = 8\text{mA (Typ)}$ ,  $V_{CC} = 3\text{V}$
- Wide operating voltage range:  $V_{CC} = 1.8\text{V} \sim 6\text{V}$ .
- Built-in AM/FM function switch.
- Tuning indicator: direct LED driving capability:  $10\text{mA (Max)}$ .
- One terminal AM/FM detector output.
- A minimum number of external parts required.



**ORDERING INFORMATION**

| Device  | Package | Operating Temperature |
|---------|---------|-----------------------|
| KA2248A | 16 DIP  | -20°C ~ 70°C          |
| KA2248D | 20 SOP  |                       |

**BLOCK DIAGRAM**



ABSOLUTE MAXIMUM RATINGS ( $T_a = 25^\circ\text{C}$ )

| Characteristic        | Symbol    | Value      | Unit             |
|-----------------------|-----------|------------|------------------|
| Supply Voltage        | $V_{CC}$  | 6          | V                |
| Power Dissipation     | KA2248A   | 600        | mW               |
|                       | KA2248D   | 350        |                  |
| Operating Temperature | $T_{OPR}$ | -20 ~ +70  | $^\circ\text{C}$ |
| Storage Temperature   | $T_{STG}$ | -40 ~ +125 | $^\circ\text{C}$ |

## ELECTRICAL CHARACTERISTICS

( $T_a = 25^\circ\text{C}$ ,  $V_{CC} = 3\text{V}$ , unless otherwise specified)

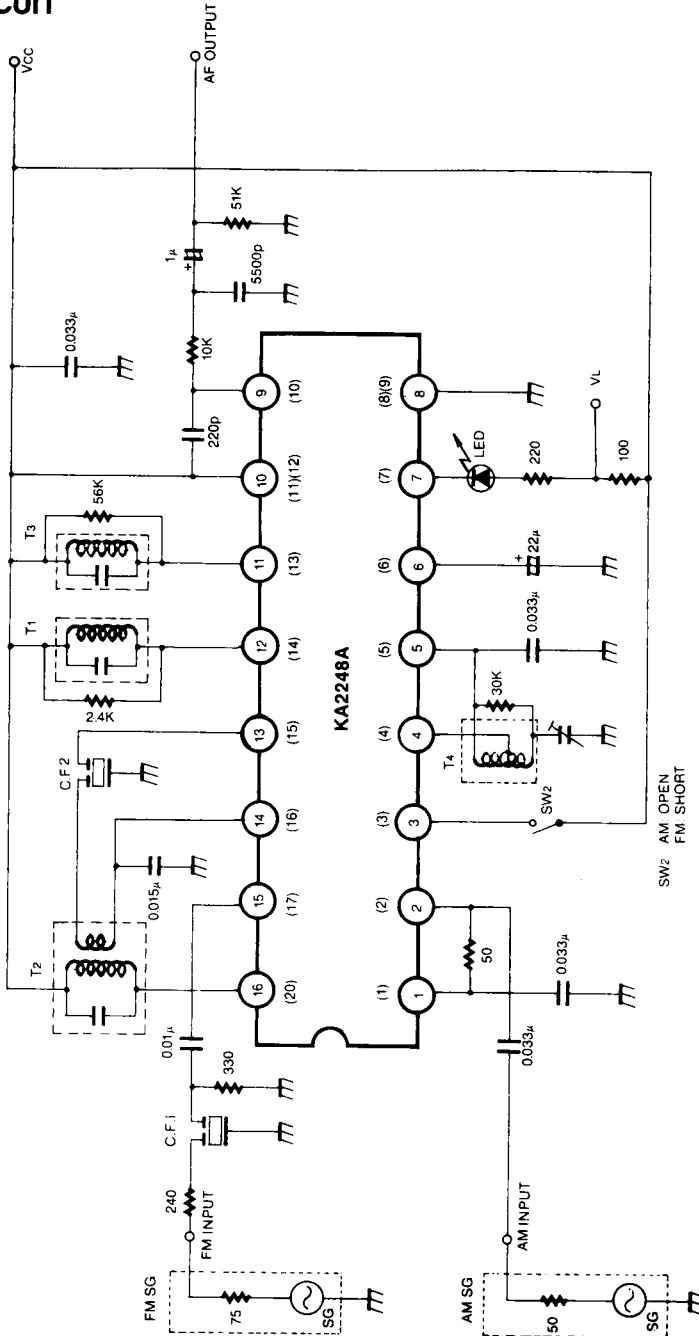
\* FM Section ( $f = 10.7\text{MHz}$ ,  $f_m = 1\text{KHz}$ ,  $\Delta f = 22.5\text{KHz}$ )

| Characteristic            | Symbol       | Test Conditions         | Min | Typ | Max | Unit             |
|---------------------------|--------------|-------------------------|-----|-----|-----|------------------|
| Quiescent Circuit Current | $I_{CCQ}$    | $V_i = 0$               |     | 8   | 13  | mA               |
| -3dB Limiting Sensitivity | $V_{i(LIM)}$ | $V_i = 86\text{dB}\mu$  |     | 46  | 52  | $\text{dB}\mu$   |
| Detector Voltage          | $V_{O(DET)}$ | $V_i = 86\text{dB}\mu$  | 60  | 85  | 120 | mV               |
| Signal to Noise Ratio     | S/N          | $V_i = 86\text{dB}\mu$  | 50  | 65  |     | dB               |
| Total Harmonic Distortion | THD          | $V_i = 86\text{dB}\mu$  |     | 0.1 | 1.0 | %                |
| AM Rejection Ratio        | AMR          | $V_i = 86\text{dB}\mu$  | 30  | 45  |     | dB               |
| Tuning Indication Voltage | $V_L$        | $I_{LAMP} = 1\text{mA}$ |     | 50  | 58  | $\text{dB}\mu$   |
| Output Resistance         | $R_O$        | $f = 1\text{KHz}$       |     | 0.7 |     | $\text{K}\Omega$ |

\* AM Section ( $f = 1\text{MHz}$ ,  $f_m = 1\text{KHz}$ , 30% Mod)

| Characteristic            | Symbol       | Test Conditions         | Min | Typ | Max | Unit             |
|---------------------------|--------------|-------------------------|-----|-----|-----|------------------|
| Quiescent Current         | $I_{CCQ}$    | $V_i = 0$               |     | 3   | 7   | mA               |
| Voltage Gain              | $G_V$        | $V_i = 26\text{dB}\mu$  | 15  | 30  | 50  | mV               |
| Detector Voltage          | $V_{O(DET)}$ | $V_i = 60\text{dB}\mu$  | 35  | 50  | 70  | mV               |
| Signal to Noise Ratio     | S/N          | $V_i = 60\text{dB}\mu$  | 35  | 45  |     | dB               |
| Total Harmonic Distortion | THD          | $V_i = 60\text{dB}\mu$  |     | 1.0 | 3.5 | %                |
| Oscillator Stop Voltage   | $V_{STOP}$   |                         |     | 1.2 |     | V                |
| Output Resistance         | $R_O$        | $f = 1\text{KHz}$       |     | 8.3 |     | $\text{K}\Omega$ |
| Tuning Indication Voltage | $V_L$        | $I_{LAMP} = 1\text{mA}$ |     | 26  | 40  | $\text{dB}\mu$   |

TEST CIRCUIT

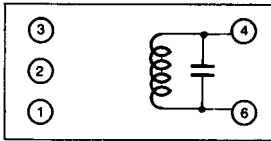


( ) : KA2248D

Fig. 2

COIL SPECIFICATIONS (BOTTOM VIEW)

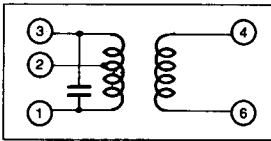
T1 FM IF (DET)



| C <sub>o</sub> (pF) | f (MHz) | Q <sub>o</sub> | TURNS |
|---------------------|---------|----------------|-------|
| 4-6                 |         | 4-6            | 4-6   |
| 100                 | 10.7    | 150            | 14    |

Seoul Jupa  
0.12mmφ UEW

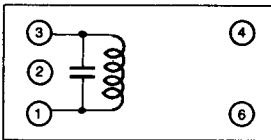
T2 AM IFT (MIX OUT)



| C <sub>o</sub> (PF) | f (KHz) | Q <sub>o</sub> | TURNS |     |     |
|---------------------|---------|----------------|-------|-----|-----|
|                     |         |                | 1-2   | 2-3 | 4-6 |
| 1-3                 |         | 1-3            | 1-2   | 2-3 | 4-6 |
| 180                 | 455     | 110            | 90    | 62  | 8   |

Seoul Jupa  
0.07mmφ UEW

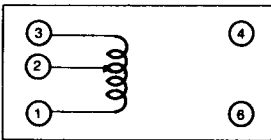
T3 AM IFT (DET)



| C <sub>o</sub> (pF) | f (KHz) | Q <sub>o</sub> | TURNS |
|---------------------|---------|----------------|-------|
| 1-3                 |         | 1-3            | 1-3   |
| 180                 | 455     | 110            | 152   |

Seoul Jupa  
0.07mmφ UEW

T4 (MW OSC)



| f (KHz) | L (μH) | Q <sub>o</sub> | TURNS |     |
|---------|--------|----------------|-------|-----|
|         | 1-3    |                | 1-2   | 2-3 |
| 796     | 288    | 120            | 13    | 75  |

Seoul Jupa  
0.08mmφ UEW



LittleDiode supplies new, hard to find or obsolete electronic components and semiconductors all over the world.

With over two million different components listed you are sure to find the part you need.

Feel free to visit us today at our online store:

[LittleDiode.com](http://LittleDiode.com)

Looking forward to providing you with the best possible service.