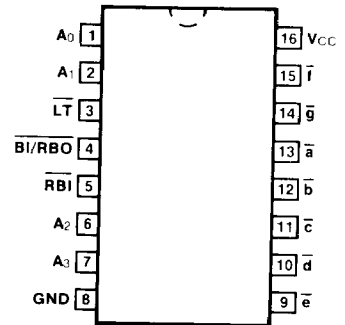


54LS/74LS347 ✓ 034690

BCD TO 7-SEGMENT DECODER/DRIVER

CONNECTION DIAGRAM PINOUT A

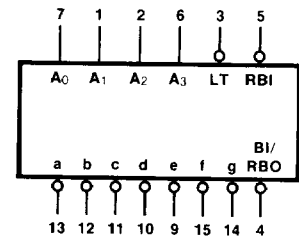


DESCRIPTION — The '347 is the same as the '47 except that the Output OFF Voltage, V_{OH} , is specified as 7.0 V rather than 15 V, with the same I_{OH} limit of 250 μ A. For all other information please refer to the '47 data sheet.

ORDERING CODE: See Section 9

PKGS	PIN OUT	COMMERCIAL GRADE	MILITARY GRADE	PKG TYPE
		$V_{CC} = +5.0 \text{ V} \pm 5\%$, $T_A = 0^\circ \text{ C to } +70^\circ \text{ C}$	$V_{CC} = +5.0 \text{ V} \pm 10\%$, $T_A = -55^\circ \text{ C to } +125^\circ \text{ C}$	
Plastic DIP (P)	A	74LS347PC		9B
Ceramic DIP (D)	A	74LS347DC	54LS347DM	7B
Flatpak (F)	A	74LS347FC	54LS347FM	4L

LOGIC SYMBOL



$V_{CC} = \text{Pin } 16$
 $\text{GND} = \text{Pin } 8$

INPUT LOADING/FAN-OUT: See Section 3 for U.L. definitions

PIN NAMES	DESCRIPTION	54/74LS HIGH/LOW
$A_0 - A_3$	BCD Inputs	0.5/0.25
$\overline{\text{RBI}}$	Ripple Blanking Input (Active LOW)	0.5/0.25
$\overline{\text{LT}}$	Lamp Test Input (Active LOW)	0.5/0.25
$\overline{\text{BI/RBO}}$	Blanking Input (Active LOW) or Ripple Blanking Output (Active LOW)	-/0.75 1.25/2.0
$\overline{a} - \overline{g}$	Segment Outputs (Active LOW)	(1.0) OC*/15 (7.5)

*OC — Open Collector

This datasheet has been downloaded from:

www.DatasheetCatalog.com

Datasheets for electronic components.



LittleDiode supplies new, hard to find or obsolete electronic components and semiconductors all over the world.

With over two million different components listed you are sure to find the part you need.

Feel free to visit us today at our online store:

LittleDiode.com

Looking forward to providing you with the best possible service.