

FEATURES

0.5 Ω Typical On Resistance
0.8 Ω Maximum On Resistance at 125°C
1.65 V to 3.6 V Operation
Automotive Temperature Range: -40°C to +125°C
High Current Carrying Capability: 300 mA Continuous
Rail-to-Rail Switching Operation
Fast Switching Times <20 ns
Typical Power Consumption (<0.1 μ W)

APPLICATIONS

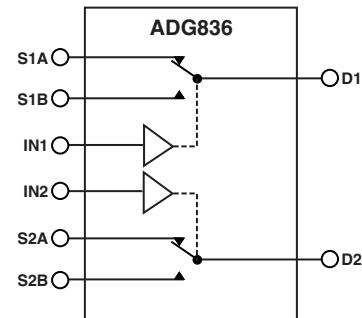
Cellular Phones
PDA's
MP3 Players
Power Routing
Battery-Powered Systems
PCMCIA Cards
Modems
Audio and Video Signal Routing
Communication Systems

GENERAL DESCRIPTION

The ADG836 is a low voltage CMOS device containing two independently selectable single-pole, double-throw (SPDT) switches. This device offers ultralow on resistance of less than 0.8 Ω over the full temperature range. The ADG836 is fully specified for 3.3 V, 2.5 V, and 1.8 V supply operation.

Each switch conducts equally well in both directions when on and has an input signal range that extends to the supplies. The ADG836 exhibits break-before-make switching action.

The ADG836 is available in 10-lead MSOP and 3 mm \times 3 mm 12-lead LFCSP packages.

FUNCTIONAL BLOCK DIAGRAM


SWITCHES SHOWN FOR A LOGIC 1 INPUT

PRODUCT HIGHLIGHTS

1. <0.8 Ω over full temperature range of -40°C to +125°C.
2. Single 1.65 V to 3.6 V operation.
3. Compatible with 1.8 V CMOS logic.
4. High current handling capability (300 mA continuous current at 3.3 V).
5. Low THD + N (0.02% typ).
6. 3 mm \times 3 mm LFCSP package and 10-lead MSOP package.

REV.0

Information furnished by Analog Devices is believed to be accurate and reliable. However, no responsibility is assumed by Analog Devices for its use, nor for any infringements of patents or other rights of third parties that may result from its use. No license is granted by implication or otherwise under any patent or patent rights of Analog Devices. Trademarks and registered trademarks are the property of their respective companies.

ADG836—SPECIFICATIONS¹ ($V_{DD} = 2.7\text{ V to }3.6\text{ V}$, $GND = 0\text{ V}$, unless otherwise noted.)

Parameter	+25°C	-40°C to +85°C	-40°C to +125°C	Unit	Test Conditions/Comments
ANALOG SWITCH					
Analog Signal Range			0 V to V_{DD}	V	$V_{DD} = 2.7\text{ V}$
On Resistance (R_{ON})	0.5			Ω typ	$V_{DD} = 2.7\text{ V}$, $V_S = 0\text{ V to }V_{DD}$, $I_S = 10\text{ mA}$; Test Circuit 1
	0.65	0.75	0.8	Ω max	
On Resistance Match between Channels (ΔR_{ON})	0.04			Ω typ	$V_{DD} = 2.7\text{ V}$, $V_S = 0.65\text{ V}$, $I_S = 10\text{ mA}$
		0.075	0.08	Ω max	
On Resistance Flatness ($R_{FLAT(ON)}$)	0.1			Ω typ	$V_{DD} = 2.7\text{ V}$, $V_S = 0\text{ V to }V_{DD}$, $I_S = 10\text{ mA}$
		0.15	0.16	Ω max	
LEAKAGE CURRENTS					
Source Off Leakage I_S (OFF)	± 0.2			nA typ	$V_{DD} = 3.6\text{ V}$
	± 1	± 10	± 100	nA max	$V_S = 0.6\text{ V}/3.3\text{ V}$, $V_D = 3.3\text{ V}/0.6\text{ V}$; Test Circuit 2
Channel On Leakage I_D , I_S (ON)	± 0.2			nA typ	$V_S = V_D = 0.6\text{ V or }3.3\text{ V}$; Test Circuit 3
	± 1	± 15	± 120	nA max	
DIGITAL INPUTS					
Input High Voltage, V_{INH}			2	V min	
Input Low Voltage, V_{INL}			0.8	V max	
Input Current I_{INL} or I_{INH}	0.005			μA typ	$V_{IN} = V_{INL}$ or V_{INH}
			± 0.1	μA max	
C_{IN} , Digital Input Capacitance	4			pF typ	
DYNAMIC CHARACTERISTICS²					
t_{ON}	21			ns typ	$R_L = 50\ \Omega$, $C_L = 35\text{ pF}$
	26	28	29	ns max	$V_S = 1.5\text{ V}/0\text{ V}$; Test Circuit 4
t_{OFF}	4			ns typ	$R_L = 50\ \Omega$, $C_L = 35\text{ pF}$
	7	8	9	ns max	$V_S = 1.5\text{ V}$; Test Circuit 4
Break-before-Make Time Delay (t_{BBM})	17			ns typ	$R_L = 50\ \Omega$, $C_L = 35\text{ pF}$
			5	ns min	$V_{S1} = V_{S2} = 1.5\text{ V}$; Test Circuit 5
Charge Injection	40			pC typ	$V_S = 1.5\text{ V}$, $R_S = 0\ \Omega$, $C_L = 1\text{ nF}$; Test Circuit 6
Off Isolation	-67			dB typ	$R_L = 50\ \Omega$, $C_L = 5\text{ pF}$, $f = 100\text{ kHz}$; Test Circuit 7
Channel-to-Channel Crosstalk	-90			dB typ	S1A-S2A/S1B-S2B; $R_L = 50\ \Omega$, $C_L = 5\text{ pF}$, $f = 100\text{ kHz}$; Test Circuit 10
				dB typ	S1A-S1B/S2A-S2B; $R_L = 50\ \Omega$, $C_L = 5\text{ pF}$, $f = 100\text{ kHz}$; Test Circuit 9
Total Harmonic Distortion (THD + N)	0.02			%	$R_L = 32\ \Omega$, $f = 20\text{ Hz to }20\text{ kHz}$, $V_S = 2\text{ V p-p}$
Insertion Loss	-0.05			dB typ	$R_L = 50\ \Omega$, $C_L = 5\text{ pF}$; Test Circuit 8
-3 dB Bandwidth	57			MHz typ	$R_L = 50\ \Omega$, $C_L = 5\text{ pF}$; Test Circuit 8
C_S (OFF)	25			pF typ	
C_D , C_S (ON)	75			pF typ	
POWER REQUIREMENTS					
I_{DD}	0.003			μA typ	$V_{DD} = 3.6\text{ V}$
		1	4	μA max	Digital Inputs = 0 V or 3.6 V

NOTES

¹Temperature range is as follows: Y version: -40°C to +125°C.

²Guaranteed by design, not subject to production test.

Specifications subject to change without notice.

SPECIFICATIONS¹ ($V_{DD} = 2.5 \text{ V} \pm 0.2 \text{ V}$, $GND = 0 \text{ V}$, unless otherwise noted.)

Parameter	+25°C	-40°C to +85°C	-40°C to +125°C	Unit	Test Conditions/Comments
ANALOG SWITCH					
Analog Signal Range			0 V to V_{DD}	V	
On Resistance (R_{ON})	0.65			Ω typ	$V_{DD} = 2.3 \text{ V}$, $V_S = 0 \text{ V}$ to V_{DD} , $I_S = 10 \text{ mA}$; Test Circuit 1
	0.72	0.8	0.88	Ω max	
On Resistance Match between Channels (ΔR_{ON})	0.04			Ω typ	$V_{DD} = 2.3 \text{ V}$, $V_S = 0.7 \text{ V}$; $I_S = 10 \text{ mA}$
On Resistance Flatness ($R_{FLAT(ON)}$)	0.16	0.08	0.085	Ω max	
		0.23	0.24	Ω typ	$V_{DD} = 2.3 \text{ V}$, $V_S = 0 \text{ V}$ to V_{DD} , $I_S = 10 \text{ mA}$
				Ω max	
LEAKAGE CURRENTS					
Source Off Leakage I_S (OFF)	± 0.2			nA typ	$V_{DD} = 2.7 \text{ V}$ $V_S = 0.6 \text{ V}/2.4 \text{ V}$, $V_D = 2.4 \text{ V}/0.6 \text{ V}$; Test Circuit 2
	± 0.4	± 4	± 45	nA max	
Channel On Leakage I_D , I_S (ON)	± 0.2			nA typ	$V_S = V_D = 0.6 \text{ V}$ or 2.4 V ; Test Circuit 3
	± 0.6	± 12	± 90	nA max	
DIGITAL INPUTS					
Input High Voltage, V_{INH}			1.7	V min	
Input Low Voltage, V_{INL}			0.7	V max	
Input Current I_{INL} or I_{INH}	0.005			μA typ	$V_{IN} = V_{INL}$ or V_{INH}
			± 0.1	μA max	
C_{IN} , Digital Input Capacitance	4			pF typ	
DYNAMIC CHARACTERISTICS²					
t_{ON}	23			ns typ	$R_L = 50 \Omega$, $C_L = 35 \text{ pF}$
	29	30	31	ns max	$V_S = 1.5 \text{ V}/0 \text{ V}$; Test Circuit 4
t_{OFF}	5			ns typ	$R_L = 50 \Omega$, $C_L = 35 \text{ pF}$
	7	8	9	ns max	$V_S = 1.5 \text{ V}$; Test Circuit 4
Break-before-Make Time Delay (t_{BBM})	17			ns typ	$R_L = 50 \Omega$, $C_L = 35 \text{ pF}$
			5	ns min	$V_{S1} = V_{S2} = 1.5 \text{ V}$; Test Circuit 5
Charge Injection	30			pC typ	$V_S = 1.25 \text{ V}$, $R_S = 0 \Omega$, $C_L = 1 \text{ nF}$; Test Circuit 6
Off Isolation	-67			dB typ	$R_L = 50 \Omega$, $C_L = 5 \text{ pF}$, $f = 100 \text{ kHz}$; Test Circuit 7
Channel-to-Channel Crosstalk	-90			dB typ	S1A-S2A/S1B-S2B; $R_L = 50 \Omega$, $C_L = 5 \text{ pF}$, $f = 100 \text{ kHz}$; Test Circuit 10
				dB typ	S1A-S1B/S2A-S2B; $R_L = 50 \Omega$, $C_L = 5 \text{ pF}$, $f = 100 \text{ kHz}$; Test Circuit 9
Total Harmonic Distortion (THD + N)	0.022			%	$R_L = 32 \Omega$, $f = 20 \text{ Hz}$ to 20 kHz , $V_S = 1.5 \text{ V}$ p-p
Insertion Loss	-0.06			dB typ	$R_L = 50 \Omega$, $C_L = 5 \text{ pF}$; Test Circuit 8
-3 dB Bandwidth	57			MHz typ	$R_L = 50 \Omega$, $C_L = 5 \text{ pF}$; Test Circuit 8
C_S (OFF)	25			pF typ	
C_D , C_S (ON)	75			pF typ	
POWER REQUIREMENTS					
I_{DD}	0.003			μA typ	$V_{DD} = 2.7 \text{ V}$ Digital Inputs = 0 V or 2.7 V
		1.0	4.0	μA max	

NOTES

¹ Temperature range is as follows: Y version: -40°C to +125°C.² Guaranteed by design, not subject to production test.

Specifications subject to change without notice.

ADG836

SPECIFICATIONS¹ ($V_{DD} = 1.65\text{ V to }1.95\text{ V, GND} = 0\text{ V, unless otherwise noted.}$)

Parameter	+25°C	-40°C to +85°C	-40°C to +125°C	Unit	Test Conditions/Comments
ANALOG SWITCH					
Analogue Signal Range			0 V to V_{DD}	V	
On Resistance (R_{ON})	1			Ω typ	$V_{DD} = 1.8\text{ V, }V_S = 0\text{ V to }V_{DD}, I_S = 10\text{ mA};$ Test Circuit 1
	1.4	2.2	2.2	Ω max	
	2	4	4	Ω max	$V_{DD} = 1.65\text{ V, }V_S = 0\text{ V to }V_{DD}, I_S = 10\text{ mA}$
On Resistance Match between Channels (ΔR_{ON})	0.1			Ω typ	$V_{DD} = 1.65\text{ V, }V_S = 0.7\text{ V, }I_S = 10\text{ mA}$
LEAKAGE CURRENTS					
Source Off Leakage I_S (OFF)	± 0.2			nA typ	$V_{DD} = 1.95\text{ V}$ $V_S = 0.6\text{ V/1.65 V, }V_D = 1.65\text{ V/0.6 V};$ Test Circuit 2
	± 0.4	± 4	± 25	nA max	
Channel On Leakage I_D, I_S (ON)	± 0.2			nA typ	$V_S = V_D = 0.6\text{ V or }1.65\text{ V};$ Test Circuit 3
	± 0.6	± 10	± 75	nA max	
DIGITAL INPUTS					
Input High Voltage, V_{INH}			$0.65 V_{DD}$	V min	
Input Low Voltage, V_{INL}			$0.35 V_{DD}$	V max	
Input Current I_{INL} or I_{INH}	0.005			$\mu\text{A typ}$	$V_{IN} = V_{INL}$ or V_{INH}
			± 0.1	$\mu\text{A max}$	
C_{IN} , Digital Input Capacitance	4			pF typ	
DYNAMIC CHARACTERISTICS²					
t_{ON}	28			ns typ	$R_L = 50\ \Omega, C_L = 35\text{ pF}$
	37	38	39	ns max	$V_S = 1.5\text{ V/0 V};$ Test Circuit 4
t_{OFF}	7			ns typ	$R_L = 50\ \Omega, C_L = 35\text{ pF}$
	9	10	11	ns max	$V_S = 1.5\text{ V/0 V};$ Test Circuit 4
Break-before-Make Time Delay (t_{BBM})	21			ns typ	$R_L = 50\ \Omega, C_L = 35\text{ pF}$
			5	ns min	$V_{S1} = V_{S2} = 1\text{ V};$ Test Circuit 5
Charge Injection	20			pC typ	$V_S = 1\text{ V, }R_S = 0\ \Omega, C_L = 1\text{ nF};$ Test Circuit 6
Off Isolation	-67			dB typ	$R_L = 50\ \Omega, C_L = 5\text{ pF, }f = 100\text{ kHz};$ Test Circuit 7
Channel-to-Channel Crosstalk	-90			dB typ	S1A-S2A/S1B-S2B; $R_L = 50\ \Omega, C_L = 5\text{ pF, }f = 100\text{ kHz};$ Test Circuit 10
	-67			dB typ	S1A-S1B/S2A-S2B; $R_L = 50\ \Omega, C_L = 5\text{ pF, }f = 100\text{ kHz};$ Test Circuit 9
Total Harmonic Distortion, THD	0.14			%	$R_L = 32\ \Omega, f = 20\text{ Hz to }20\text{ kHz,}$ $V_S = 1.2\text{ V p-p}$
Insertion Loss	-0.08			dB typ	$R_L = 50\ \Omega, C_L = 5\text{ pF};$ Test Circuit 8
-3 dB Bandwidth	57			MHz typ	$R_L = 50\ \Omega, C_L = 5\text{ pF};$ Test Circuit 8
C_S (OFF)	25			pF typ	
C_D, C_S (ON)	75			pF typ	
POWER REQUIREMENTS					
I_{DD}	0.003			$\mu\text{A typ}$	$V_{DD} = 1.95\text{ V}$ Digital Inputs = 0 V or 1.95 V
		1.0	4	$\mu\text{A max}$	

NOTES

¹Temperature range is as follows: Y version: -40°C to +125°C.

²Guaranteed by design, not subject to production test.

Specifications subject to change without notice.

ABSOLUTE MAXIMUM RATINGS¹

(T_A = 25°C, unless otherwise noted.)

V_{DD} to GND -0.3 V to +4.6 V
 Analog Inputs² -0.3 V to V_{DD} + 0.3 V
 Digital Inputs² -0.3 V to 4.6 V
 or 10 mA, Whichever Occurs First

Peak Current, S or D

3.3 V Operation 500 mA
 2.5 V Operation 460 mA
 1.8 V Operation 420 mA
 (Pulsed at 1ms, 10% Duty Cycle Max)

Continuous Current, S or D

3.3 V Operation 300 mA
 2.5 V Operation 275 mA
 1.8 V Operation 250 mA

Operating Temperature Range

Automotive (Y Version) -40°C to +125°C
 Storage Temperature Range -65°C to +150°C
 Junction Temperature 150°C

MSOP Package

θ_{JA} Thermal Impedance 206°C/W
 θ_{JC} Thermal Impedance 44°C/W

LFCSP Package

θ_{JA} Thermal Impedance (3-Layer Board) 61.1°C/W
 IR Reflow, Peak Temperature <20 sec 235°C

NOTES

¹ Stresses above those listed under Absolute Maximum Ratings may cause permanent damage to the device. This is a stress rating only; functional operation of the device at these or any other conditions above those listed in the operational sections of this specification is not implied. Exposure to absolute maximum rating conditions for extended periods may affect device reliability. Only one absolute maximum rating may be applied at any one time.

² Overvoltages at IN, S, or D will be clamped by internal diodes. Current should be limited to the maximum ratings given.

Table I. ADG836 Truth Table

Logic	Switch A	Switch B
0	Off	On
1	On	Off

ORDERING GUIDE

Model	Temperature Range	Package Description	Package Option	Branding*
ADG836YRM	-40°C to +125°C	Mini Small Outline Package (MSOP)	RM-10	S9A
ADG836YRM-REEL	-40°C to +125°C	Mini Small Outline Package (MSOP)	RM-10	S9A
ADG836YRM-REEL7	-40°C to +125°C	Mini Small Outline Package (MSOP)	RM-10	S9A
ADG836YCP	-40°C to +125°C	Lead Frame Chip Scale Package (LFCSP)	CP-12	S9A
ADG836YCP-REEL	-40°C to +125°C	Lead Frame Chip Scale Package (LFCSP)	CP-12	S9A
ADG836YCP-REEL7	-40°C to +125°C	Lead Frame Chip Scale Package (LFCSP)	CP-12	S9A

*Branding on this package is limited to three characters due to space constraints.

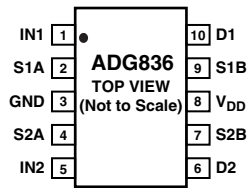
CAUTION

ESD (electrostatic discharge) sensitive device. Electrostatic charges as high as 4000V readily accumulate on the human body and test equipment and can discharge without detection. Although the ADG836 features proprietary ESD protection circuitry, permanent damage may occur on devices subjected to high energy electrostatic discharges. Therefore, proper ESD precautions are recommended to avoid performance degradation or loss of functionality.

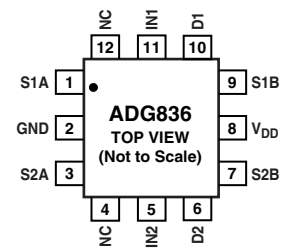


PIN CONFIGURATIONS

**10-Lead MSOP
(RM-10)**



**12-Lead LFCSP
(CP-12)**

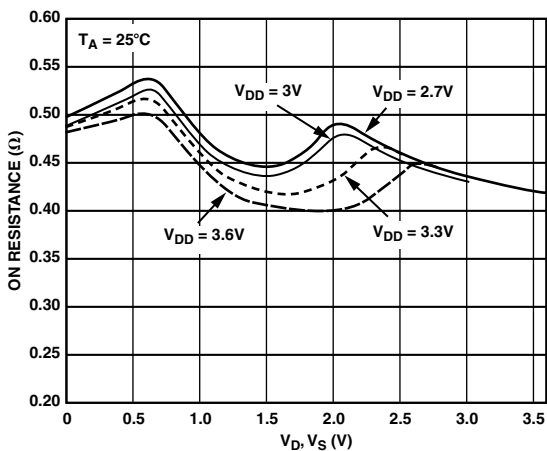


NC = NO CONNECT

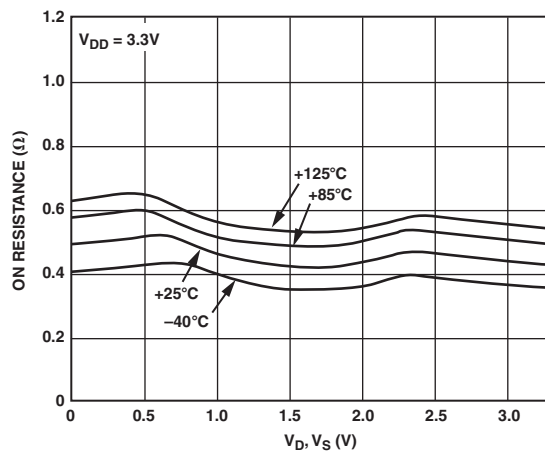
TERMINOLOGY

V_{DD}	Most positive power supply potential.
I_{DD}	Positive supply current.
GND	Ground (0 V) reference.
S	Source terminal. May be an input or output.
D	Drain terminal. May be an input or output.
IN	Logic control input.
$V_D (V_S)$	Analog voltage on terminals D, S.
R_{ON}	Ohmic resistance between D and S.
$R_{FLAT (ON)}$	Flatness is defined as the difference between the maximum and minimum value of on resistance as measured over the specified analog signal range.
ΔR_{ON}	On resistance match between any two channels.
$I_S (OFF)$	Source leakage current with the switch off.
$I_D (OFF)$	Drain leakage current with the switch off.
$I_D, I_S (ON)$	Channel leakage current with the switch on.
V_{INL}	Maximum input voltage for Logic 0.
V_{INH}	Minimum input voltage for Logic 1.
$I_{INL} (I_{INH})$	Input current of the digital input.
$C_S (OFF)$	Off switch source capacitance. Measured with reference to ground.
$C_D (OFF)$	Off switch drain capacitance. Measured with reference to ground.
$C_D, C_S (ON)$	On switch capacitance. Measured with reference to ground.
C_{IN}	Digital input capacitance.
t_{ON}	Delay time between the 50% and the 90% points of the digital input and switch on condition.
t_{OFF}	Delay time between the 50% and the 90% points of the digital input and switch off condition.
t_{BBM}	On or off time measured between the 80% points of both switches when switching from one to another.
Charge Injection	A measure of the glitch impulse transferred from the digital input to the analog output during on-off switching.
Off Isolation	A measure of unwanted signal coupling through an off switch.
Crosstalk	A measure of unwanted signal which is coupled through from one channel to another as a result of parasitic capacitance.
-3 dB Bandwidth	The frequency at which the output is attenuated by 3 dB.
On Response	The frequency response of the on switch.
Insertion Loss	The loss due to the on resistance of the switch.
THD + N	The ratio of the harmonics amplitude plus noise of a signal, to the fundamental.

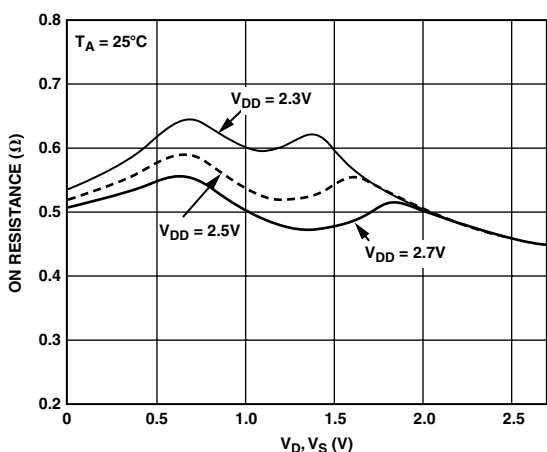
Typical Performance Characteristics—ADG836



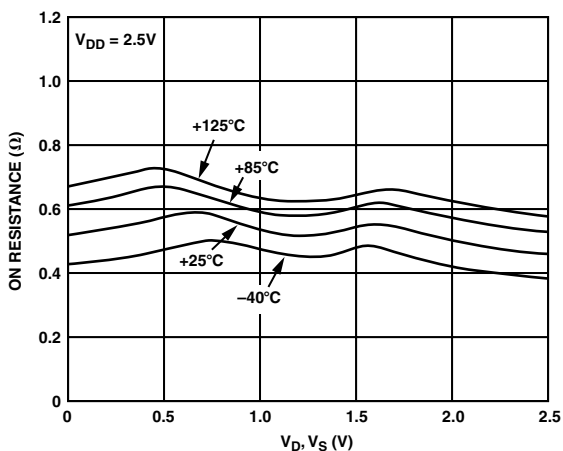
TPC 1. On Resistance vs. V_D (V_S) $V_{DD} = 2.7V$ to $3.6V$



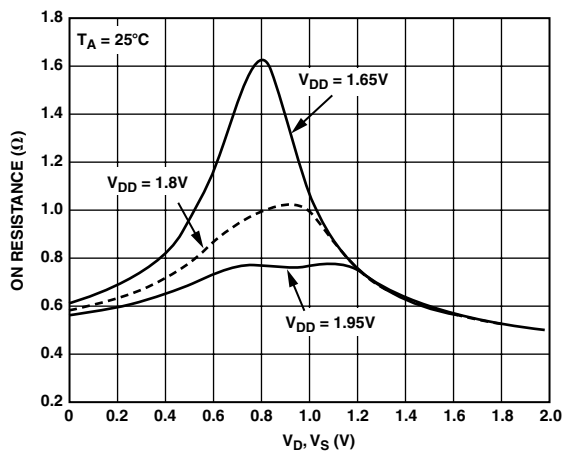
TPC 4. On Resistance vs. V_D (V_S) for Different Temperatures, $3.3V$



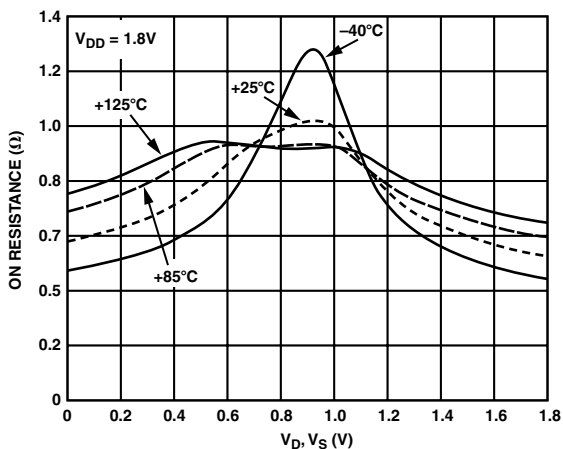
TPC 2. On Resistance vs. V_D (V_S) $V_{DD} = 2.5V \pm 0.2V$



TPC 5. On Resistance vs. V_D (V_S) for Different Temperature, $2.5V$

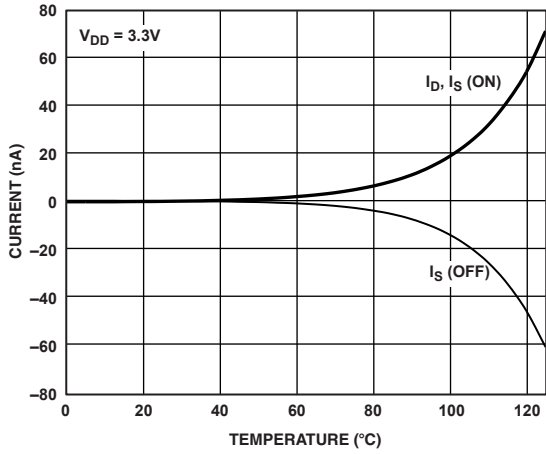


TPC 3. On Resistance vs. V_D (V_S), $V_{DD} = 1.8V \pm 0.15V$

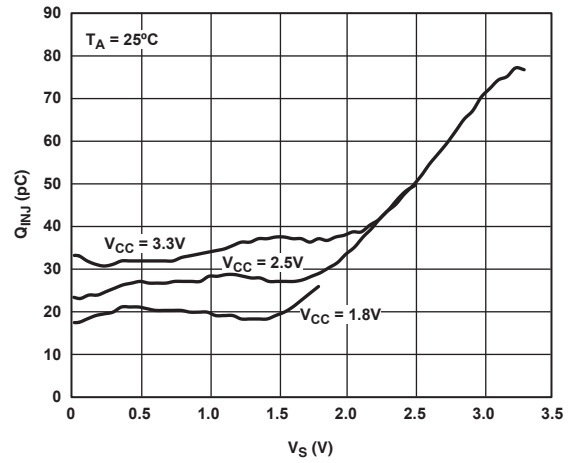


TPC 6. On Resistance vs. V_D (V_S) for Different Temperatures, $1.8V$

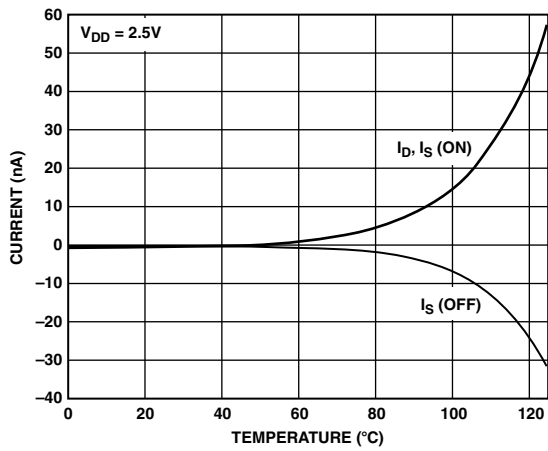
ADG836



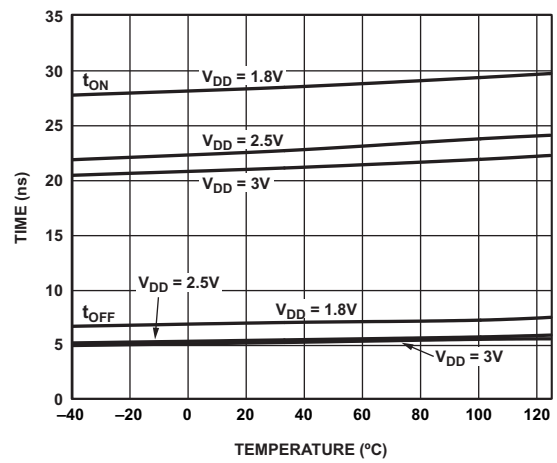
TPC 7. Leakage Currents vs. Temperature, 3.3 V



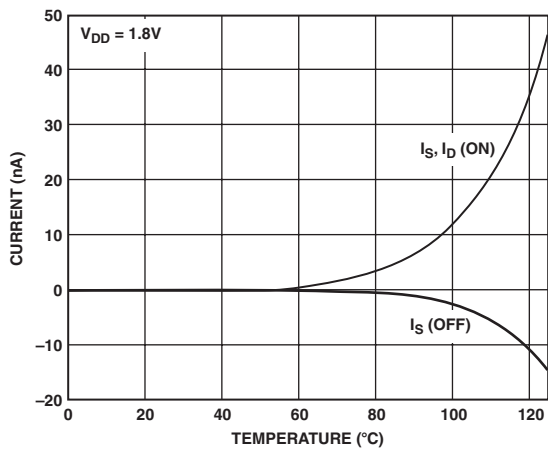
TPC 10. Charge Injection vs. Source Voltage



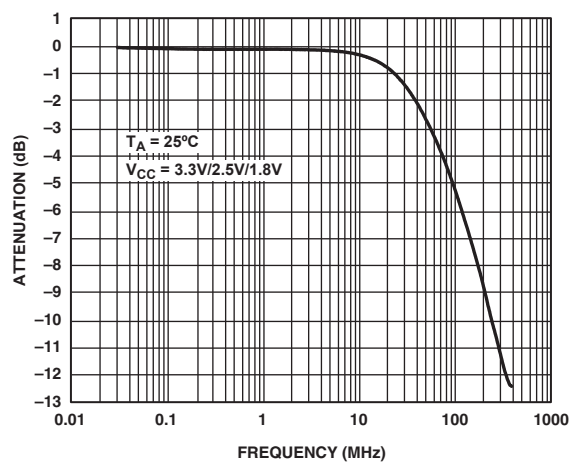
TPC 8. Leakage Current vs. Temperature, 2.5 V



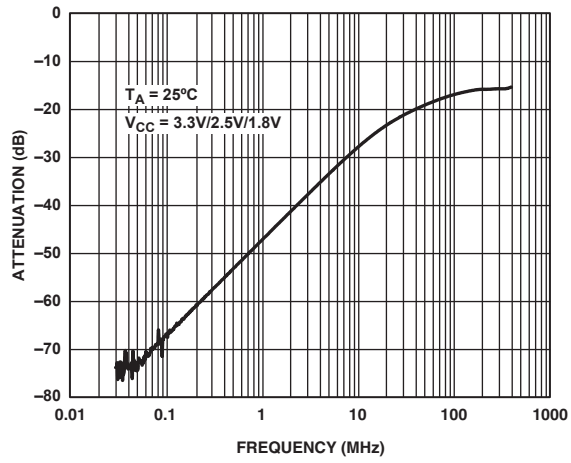
TPC 11. t_{ON}/t_{OFF} Times vs. Temperature



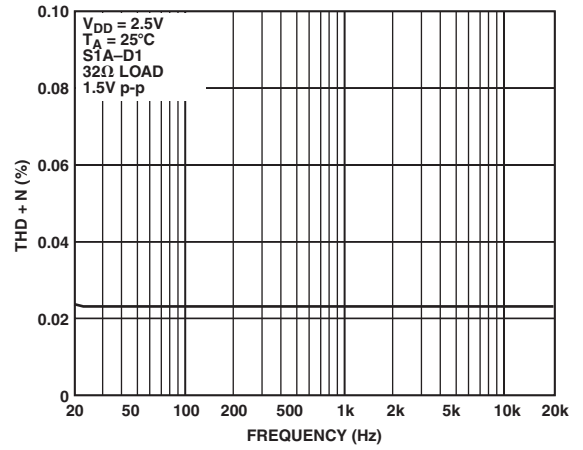
TPC 9. Leakage Current vs. Temperature, 1.8 V



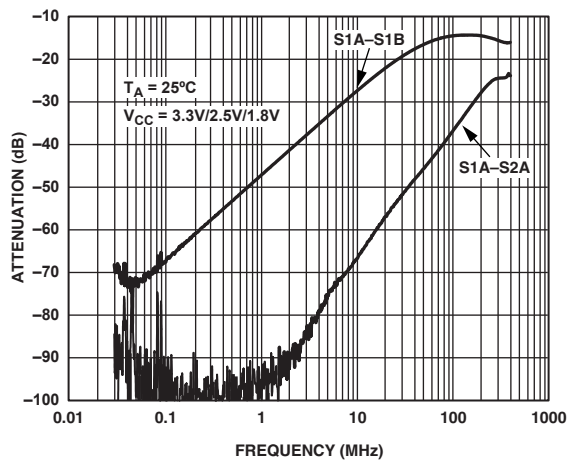
TPC 12. Bandwidth



TPC 13. Off Isolation vs. Frequency



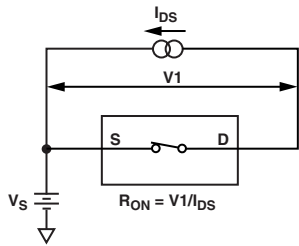
TPC 15. Total Harmonic Distortion + Noise



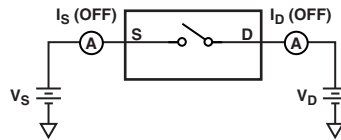
TPC 14. Crosstalk vs. Frequency

ADG836

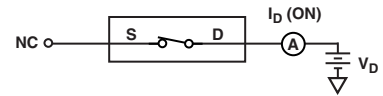
Test Circuits



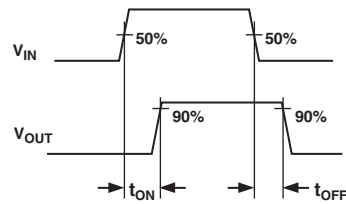
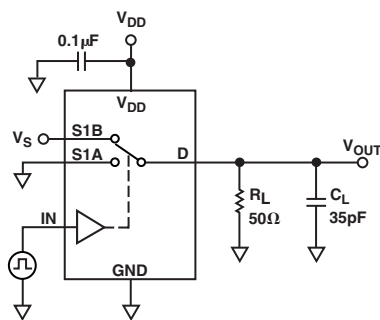
Test Circuit 1. On Resistance



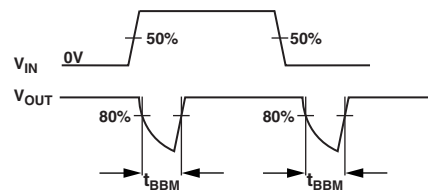
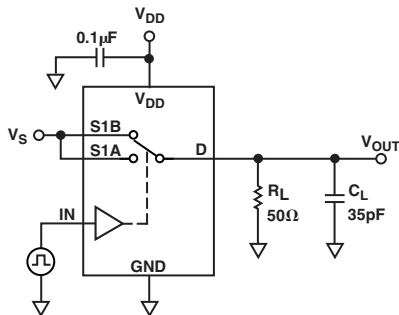
Test Circuit 2. Off Leakage



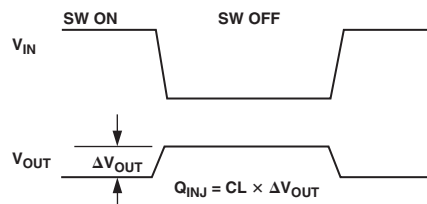
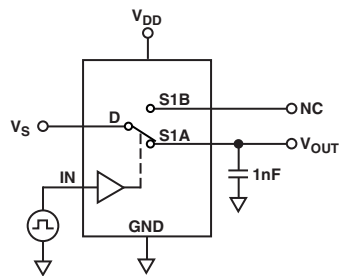
Test Circuit 3. On Leakage



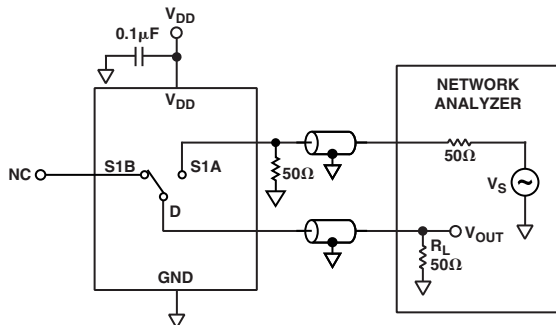
Test Circuit 4. Switching Times, t_{ON} , t_{OFF}



Test Circuit 5. Break-before-Make Time Delay, t_{BBM}

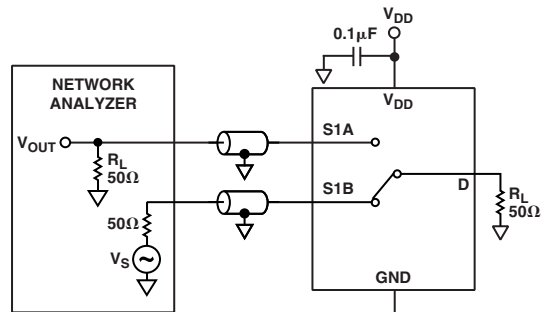


Test Circuit 6. Charge Injection



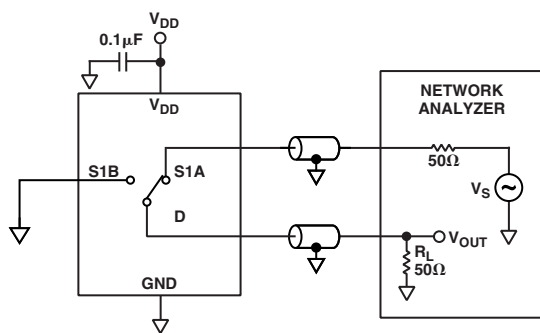
$$\text{OFF ISOLATION} = 20 \text{ LOG} \frac{V_{\text{OUT}}}{V_S}$$

Test Circuit 7. Off Isolation



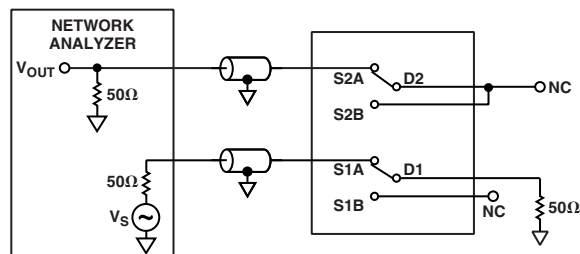
$$\text{CHANNEL-TO-CHANNEL CROSSTALK} = 20 \text{ LOG} \frac{V_{\text{OUT}}}{V_S}$$

Test Circuit 9. Channel-to-Channel Crosstalk (S1A-S1B)



$$\text{INSERTION LOSS} = 20 \text{ LOG} \frac{V_{\text{OUT WITH SWITCH}}}{V_{\text{OUT WITHOUT SWITCH}}}$$

Test Circuit 8. Bandwidth



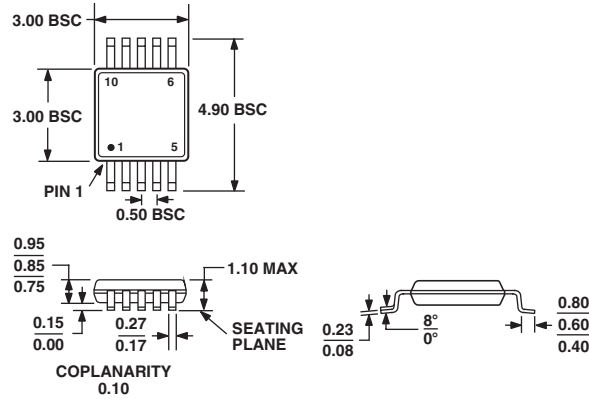
$$\text{CHANNEL-TO-CHANNEL CROSSTALK} = 20 \text{ LOG} \frac{V_{\text{OUT}}}{V_S}$$

Test Circuit 10. Channel-to-Channel Crosstalk (S1A-S2A)

OUTLINE DIMENSIONS

10-Lead Mini Small Outline Package [MSOP]
(RM-10)

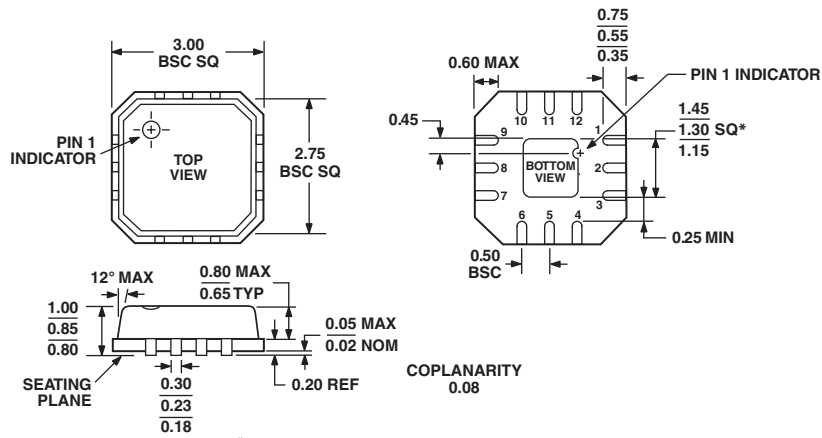
Dimensions shown in millimeters



COMPLIANT TO JEDEC STANDARDS MO-187BA

12-Lead Lead Frame Chip Scale Package [LFCSP]
(CP-12)

Dimensions shown in millimeters



*COMPLIANT TO JEDEC STANDARDS MO-220-VEED-1 EXCEPT FOR EXPOSED PAD DIMENSION



LittleDiode supplies new, hard to find or obsolete electronic components and semiconductors all over the world.

With over two million different components listed you are sure to find the part you need.

Feel free to visit us today at our online store:

LittleDiode.com

Looking forward to providing you with the best possible service.