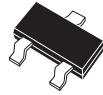


CMPT5088
CMPT5089

SURFACE MOUNT
NPN SILICON TRANSISTORS



SOT-23 CASE

CentralTM
Semiconductor Corp.

DESCRIPTION:

The CENTRAL SEMICONDUCTOR CMPT5088, CMPT5089 types are NPN silicon transistors manufactured by the epitaxial planar process, epoxy molded in a surface mount package, designed for small signal general purpose and switching applications. Marking Codes are C1Q, C1R respectively.

MAXIMUM RATINGS: ($T_A=25^\circ\text{C}$)

	<u>SYMBOL</u>	<u>CMPT5088</u>	<u>CMPT5089</u>	<u>UNITS</u>
Collector-Base Voltage	V_{CB0}	35	30	V
Collector-Emitter Voltage	V_{CEO}	30	25	V
Emitter-Base Voltage	V_{EBO}	4.5		V
Collector Current	I_C	50		mA
Power Dissipation	P_D	350		mW
Operating and Storage				
Junction Temperature	T_J, T_{stg}	-65 to +150		$^\circ\text{C}$
Thermal Resistance	θ_{JA}	357		$^\circ\text{C/W}$

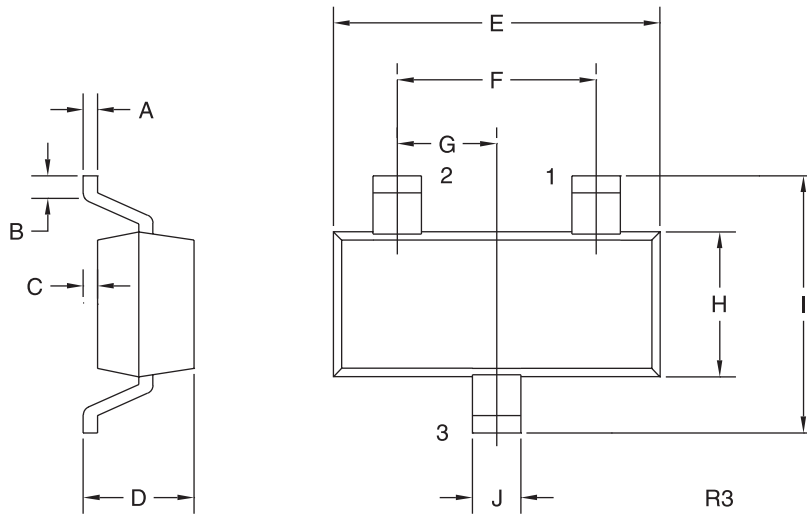
ELECTRICAL CHARACTERISTICS: ($T_A=25^\circ\text{C}$ unless otherwise noted)

<u>SYMBOL</u>	<u>TEST CONDITIONS</u>	<u>CMPT5088</u>		<u>CMPT5089</u>		<u>UNITS</u>
		<u>MIN</u>	<u>MAX</u>	<u>MIN</u>	<u>MAX</u>	
I_{CBO}	$V_{CB}=20\text{V}$		50			nA
I_{CBO}	$V_{CB}=15\text{V}$			50		nA
I_{EBO}	$V_{EB}=3.0\text{V}$		50			nA
I_{EBO}	$V_{EB}=4.5\text{V}$			100		nA
BV_{CBO}	$I_C=100\mu\text{A}$	35		30		V
BV_{CEO}	$I_C=1.0\text{mA}$	30		25		V
BV_{EBO}	$I_E=100\mu\text{A}$	4.5		4.5		V
$V_{CE(SAT)}$	$I_C=10\text{mA}, I_B=1.0\text{mA}$		0.5		0.5	V
$V_{BE(SAT)}$	$I_C=10\text{mA}, I_B=1.0\text{mA}$		0.8		0.8	V
h_{FE}	$V_{CE}=5.0\text{V}, I_C=0.1\text{mA}$	300	900	400	1200	
h_{FE}	$V_{CE}=5.0\text{V}, I_C=1.0\text{mA}$	350		450		
h_{FE}	$V_{CE}=5.0\text{V}, I_C=10\text{mA}$	300		400		
f_T	$V_{CE}=5.0\text{V}, I_C=500\mu\text{A}, f=20\text{MHz}$	50		50		MHz
C_{ob}	$V_{CB}=5.0\text{V}, I_E=0, f=1.0\text{MHz}$		4.0		4.0	pF
C_{ib}	$V_{BE}=0.5\text{V}, I_C=0, f=1.0\text{MHz}$		15		15	pF
h_{fe}	$V_{CE}=5.0\text{V}, I_C=1.0\text{mA}, f=1.0\text{kHz}$	350	1400	450	1800	
NF	$V_{CE}=5.0\text{V}, I_C=100\mu\text{A}, R_S=10\text{k}\Omega$ $f=10\text{Hz to }15.7\text{kHz}$		3.0		2.0	dB

R4 (2 -October 2001)

**SURFACE MOUNT
NPN SILICON TRANSISTORS**

SOT-23 CASE - MECHANICAL OUTLINE



LEAD CODE:

- 1) BASE
- 2) EMITTER
- 3) COLLECTOR

MARKING CODE:
CMPT5088 - C1Q
CMPT5089 - C1R

SYMBOL	DIMENSIONS			
	INCHES		MILLIMETERS	
	MIN	MAX	MIN	MAX
A	0.003	0.007	0.08	0.18
B	0.006	-	0.15	-
C	-	0.005	-	0.13
D	0.035	0.043	0.89	1.09
E	0.110	0.120	2.80	3.05
F	0.075		1.90	
G	0.037		0.95	
H	0.047	0.055	1.19	1.40
I	0.083	0.098	2.10	2.49
J	0.014	0.020	0.35	0.50

SOT-23 (REV: R3)



LittleDiode supplies new, hard to find or obsolete electronic components and semiconductors all over the world.

With over two million different components listed you are sure to find the part you need.

Feel free to visit us today at our online store:

LittleDiode.com

Looking forward to providing you with the best possible service.