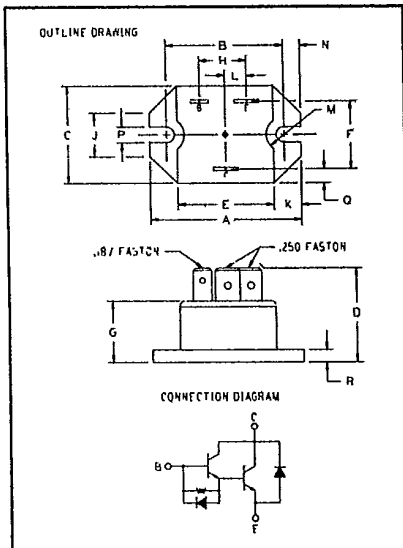


POWEREX**D66GV**

Powerex, Inc., Hillis Street, Youngwood, Pennsylvania 15697 (412) 925-7272

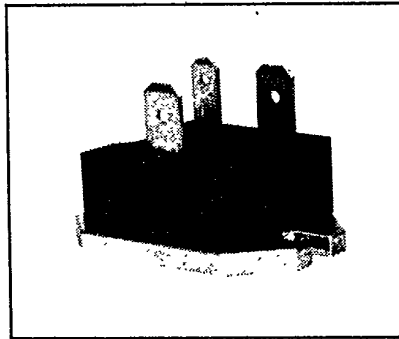
Fast Switching Single Darlington Transistor Module

50 Amperes
500-600-700 Volts



500-600-700 Volt D66GV
Outline Drawing

Dimension	Inches	Millimeters
A	1.52	38.6
B	1.186 ± .006	30 ± 0.15
C	1.000 ± .015	25.4 ± 0.4
D	.97	24.6
E	.96	24.4
F	.694 ± .010	17.6 ± 0.25
G	.625 ± .020	15.9 ± 0.5
H	.474 ± .010	12 ± 0.25
J	.450	11.4
K	.275	7
L	.220 ± .010	5.6 ± 0.25
M	.180 R	4.6 R
N	.167 ± .010	4.2 ± 0.25
P	.160 ± .010	4.1 ± 0.25
Q	.15	3.8
R	.126 ± .006	3.2 ± 0.15



D66GV
Fast Switching Single Darlington
Transistor Module
50 Amperes/500-600-700 Volts

Description

Powerex Fast Switching Single Darlington Transistor Modules are designed for use in switching applications. The modules are isolated consisting of one Darlington Transistor with a discrete reverse parallel connected high speed free-wheel diode.

Features:

- Isolated Mounting
- High Gain (h_{fe})
- Quick Connect Terminals
- Base Emitter Speed-up Diode

Applications:

- UPS Inverters
- DC Motor Control
- Switching Power Supplies
- AC Motor Control

Ordering Information

Example: Select the complete six digit module part number you desire from the table - i.e. D66GV7 is a 700 Volt, 50 Ampere Fast Switching Single Darlington Module with speed-up diode and discrete fast recovery free wheel diode.

Type	V _{CEV} Volts (x100)	Current Rating Amperes (50)
D66GV	5	50
D66GV	6	50
D66GV	7	50



Powerex, Inc., Hillis Street, Youngwood, Pennsylvania 15697 (412) 925-7272

D66GV

Fast Switching Single Darlington Transistor Module
50 Amperes/500-600-700 Volts

Maximum Ratings $T_J = 25^\circ\text{C}$ unless otherwise specified

	Symbol	D66GV	Units
Junction Temperature	T_J	-40 to 150	$^\circ\text{C}$
Storage Temperature	T_{STG}	-40 to 150	$^\circ\text{C}$
Collector-Emitter Sustaining Voltage D66GV5	$V_{CEO(SUS)}$	400	Volts
Collector-Emitter Voltage $V_{BE} = -1.5\text{V}$ D66GV5	V_{CEV}	500	Volts
Collector-Emitter Sustaining Voltage D66GV6	$V_{CEO(SUS)}$	450	Volts
Collector-Emitter Voltage $V_{BE} = -1.5\text{V}$ D66GV6	V_{CEV}	600	Volts
Collector-Emitter Sustaining Voltage D66GV7	$V_{CEO(SUS)}$	500	Volts
Collector-Emitter Voltage $V_{BE} = -1.5\text{V}$ D66GV7	V_{CEV}	700	Volts
Emitter-Base Voltage	V_{EBO}	7	Volts
Continuous Collector Current	I_C	50	Amperes
Peak (Repetitive) Collector Current	I_{CM}	75	Amperes
Peak (Non-repetitive) Collector Current	I_{CSM}	125	Amperes
Diode Forward Current	I_{FM}	50	Amperes
Continuous Base Current	I_B	10	Amperes
Peak (Non-repetitive) Base Current	I_{BM}	20	Amperes
Power Dissipation	P_T	125	Watts
Max. Mounting Torque (M3) Mounting Screws	—	8	in.-lb.
V isolation	V_{RMS}	2500	Volts

POWEREX

Powerex, Inc., Hillis Street, Youngwood, Pennsylvania 15697 (412) 925-7272

D66GV

Fast Switching Single Darlington Transistor Module
50 Amperes/500-600-700 Volts

Electrical and Mechanical Characteristics $T_j = 25^\circ\text{C}$ unless otherwise specified

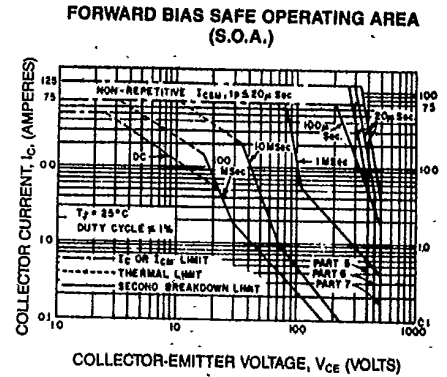
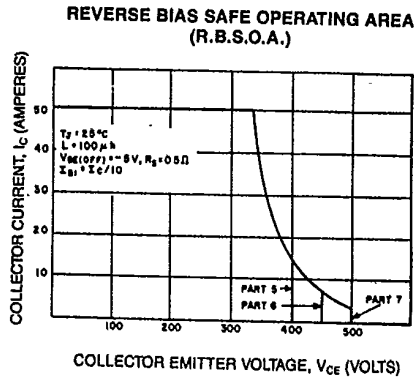
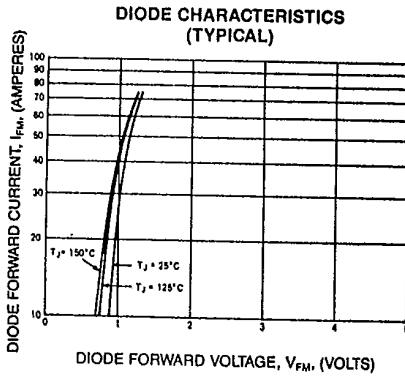
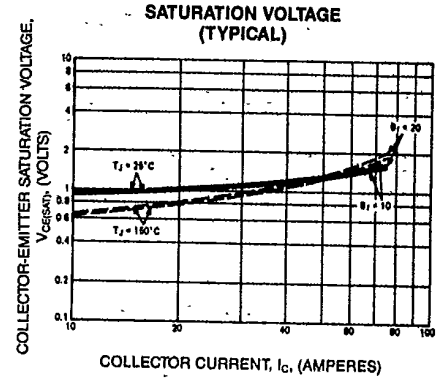
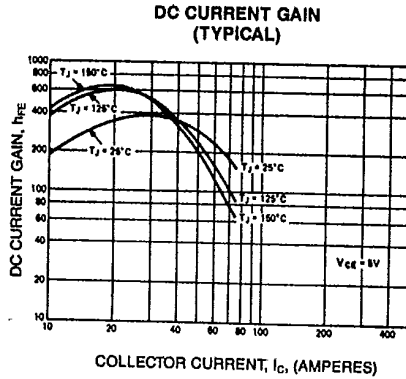
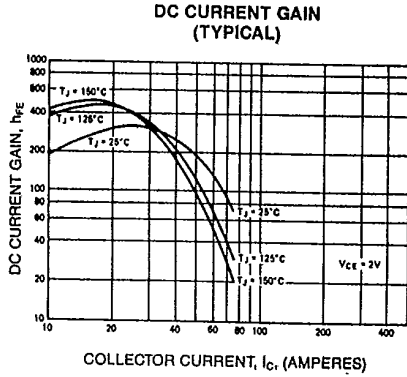
Characteristics	Symbol	Test Conditions	Min.	D66GV Typ.	Max.	Units
Collector Cutoff Current	I_{CEV}	$V_{CE} = V_{CEV}$ (rated), $V_{BE} = -1.5V$	—	—	1	mA
Collector Cutoff Current	I_{CEV}	$V_{CE} = V_{CEV}$ (rated), $V_{BE} = -1.5V$ $T_C = 150^\circ\text{C}$	—	—	2.5	mA
Emitter Cutoff Current	I_{EBO}	$V_{EB} = 5V$	—	—	10	mA
DC Current Gain	h_{FE}	$I_C = 75A, V_{CE} = 5.0V$	25	150	—	—
		$I_C = 50A, V_{CE} = 5.0V$	50	300	—	—
		$I_C = 20A, V_{CE} = 5.0V$	100	350	—	—
Collector-Emitter Saturation Voltage	$V_{CE(SAT)}$	$I_C = 75A, I_B = 5.0A$	—	1.6	3.0	V
		$I_C = 50A, I_B = 4.0A$	—	1.3	2.0	V
		$I_C = 20A, I_B = 2.0A$	—	1.0	1.5	V
Base-Emitter Saturation Voltage	$V_{BE(SAT)}$	$I_C = 75A, I_B = 5.0A$	—	2.2	3.5	V
		$I_C = 50A, I_B = 4.0A$	—	2.0	3.0	V
		$I_C = 20A, I_B = 2.0A$	—	—	2.5	V
Delay Time*	t_d	$V_{CC} = 250V$	—	0.1	0.5	μs
Rise Time*	t_r	$I_C = 50A$	—	0.65	1.0	μs
Storage Time*	t_s	$I_{B1} = 2.5A, -I_{B2} = 5A$	—	2.5	3.0	μs
Fall Time*	t_f	$t_P = 50 \mu\text{sec}$	—	0.6	0.75	μs
Diode Forward Voltage	V_{FM}	$I_{FM} = 25A$	—	1.3	2.0	V
		$I_{FM} = 25A, T_j = 150^\circ\text{C}$	—	1.3	2.50	V
Reverse Recovery Time	t_{rr}	$I_{FM} = 50A, di/dt = 100A/\mu\text{sec}$ $V_{BE} = -1.5V$	—	0.5	1.0	μs
Thermal Resistance, Junction to Case	$R_{\theta JC}$	Transistor Part	—	—	1.0	$^\circ\text{C/W}$
Thermal Resistance, Junction to Case	$R_{\theta JC}$	Diode Part	—	—	2.5	$^\circ\text{C/W}$

*Resistive Load

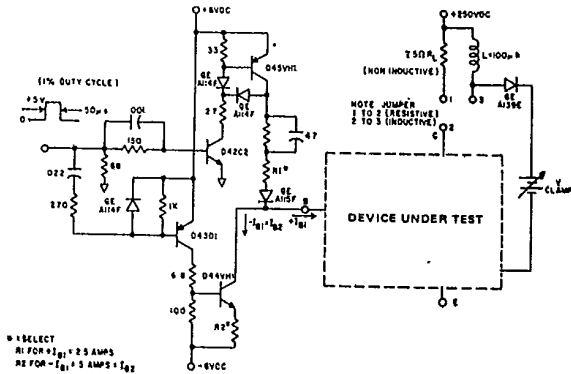


Powerex, Inc., Hillis Street, Youngwood, Pennsylvania 15697 (412) 925-7272

D66GV
Fast Switching Single Darlington Transistor Module
 50 Amperes/500-600-700 Volts



Switching Time Test Circuit





LittleDiode supplies new, hard to find or obsolete electronic components and semiconductors all over the world.

With over two million different components listed you are sure to find the part you need.

Feel free to visit us today at our online store:

LittleDiode.com

Looking forward to providing you with the best possible service.