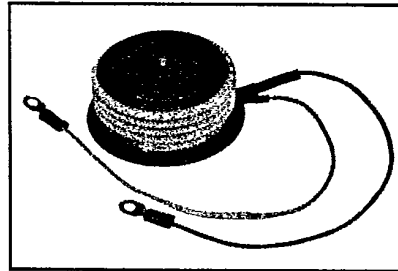
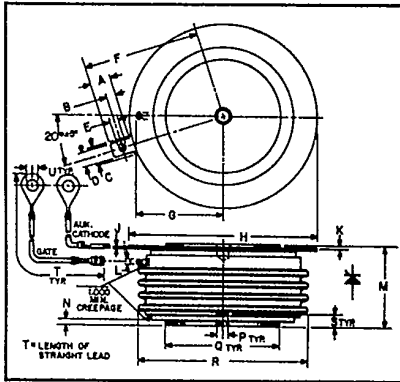




C390_X500

Powerex, Inc. Hillis Street, Youngwood, Pennsylvania 15697 (412) 925-7272
 Powerex Europe, S.A., 428 Ave. G. Durand, BP107, 72003 LeMans, France (43) 72.75.15

Phase Control SCR
620 Amperes Avg
100-600 Volts



C390_X500
Phase Control SCR
 620 Amperes/100-600 Volts

C390_X500
Outline Drawing

Dimensions	Inches		Millimeters	
	Min.	Max.	Min.	Max.
A	.240	.260	6.096	6.604
B	.110	.130	2.794	3.302
C	.245	---	6.223	---
D	.186	.191	4.724	4.851
E	.060	.075	1.524	1.905
F	---	1.430	---	36.32
G	---	1.065	---	27.051
H	2.200	2.500	55.88	63.50
J	.011	.019	2.794	3.483
K	.030	.130	.762	3.302
L	.056	.060	1.422	1.524
M	1.000	1.065	25.40	27.05
N	.030	.096	.762	2.438
P	.130	.150	3.302	3.810
Q	1.300	1.345	33.02	34.16
R	---	2.150	---	54.61
S	.067	.803	1.702	2.110
T	12.200	12.360	309.9	313.9
U	.137	.153	3.480	3.886

Description

Powerex Silicon Controlled Rectifiers (SCR) are designed for phase control applications. These are all-diffused, Press-Pak (Pow-R-Disc) devices employing the field-proven amplifying (di/namic) gate.

Features:

- Low On-State Voltage
- High di/dt
- High dv/dt
- Hermetic Packaging
- Excellent Surge and I²t Ratings

Applications:

- Power Supplies
- Battery Chargers
- Motor Control
- Light Dimmers
- VAR Generators

Ordering Information

Example: Select the complete nine digit part number you desire from the table - i.e. C390DX500 is a 400 Volt, 620 Ampere Phase Control SCR.

Type	Voltage		Current
	V _{ORM} V _{RRM}	Code	
C390_X500	100	A	620
	200	B	
	300	C	
	400	D	
	500	E	
	600	M	



T-25-20

Powerex, Inc., Hillis Street, Youngwood, Pennsylvania 15697 (412) 925-7272
 Powerex Europe, S.A., 428 Ave. G. Durand, BP107, 72003 LeMans, France (43) 72.75.15

C390_X500
 Phase Control SCR
 620 Amperes Avg/100-600 Volts

Absolute Maximum Ratings

	Symbol	C390_X500	Units
RMS On-State Current	$I_{T(RMS)}$	975	Amperes
Average On-State Current	$I_{T(av)}$	620	Amperes
Peak One-Cycle Surge (Non Repetitive) On-State Current (60Hz)	I_{TSM}	10,000	Amperes
Peak One-Cycle Surge (Non-Repetitive) On-State Current (50Hz)	I_{TSM}	9500	Amperes
Critical Rate-of-Rise of On-State Current (Non-Repetitive)	di/dt	400	Amperes/ μ s
Critical Rate-of-Rise of On-State Current (Repetitive)	di/dt	150	Amperes/ μ s
I^2t (for Fusing), One Cycle at 60Hz	I^2t	416,500	A ² sec
Peak Gate Power Dissipation, 40 μ sec Pulse	P_{GM}	200	Watts
Average Gate Power Dissipation	$P_{G(av)}$	5	Watts
Storage Temperature	T_{STG}	-40 to 150	$^{\circ}$ C
Operating Temperature	T_J	-40 to 125	$^{\circ}$ C
Mounting Force [Ⓞ]		1800 to 2200	lb.
Mounting Force [Ⓞ]		8 to 9.8	kN

Electrical and Thermal Characteristics

Characteristics	Symbol	Test Conditions	C390_X500	Units
Voltage—Blocking State Maximums				
Forward Leakage, Peak	I_{DRM}	$T_J = 125^{\circ}\text{C}, V = V_{DRM}$	50	mA
Reverse Leakage, Peak	I_{RRM}	$T_J = 125^{\circ}\text{C}, V = V_{RRM}$	50	mA
Current—Conducting State Maximums				
Peak On-State Voltage	V_{TM}	$I_{TM} = 3000\text{A}; T_J = 25^{\circ}\text{C}$	1.9	Volts
Switching				
Typical Turn-Off Time	t_q	$T_J = 125^{\circ}\text{C}, I_{TM} = 500\text{Amps}; V_R = 50\text{Volts Min.}; V_{DRM}$ (Reapplied); Rate-of-Rise of Reapplied Off-State Voltage = 20V/ μ sec (linear); Commutation di/dt = 25A/ μ sec; Repetition Rate = 1 pps; Gate Bias During Turn-Off Interval = 0 Volts, 100 Ω	125	μ sec
Typical Delay Time	t_d	$T_J = 25^{\circ}\text{C}, I_{TM} = 50\text{A}, V_{DRM}$ Rated. Gate Supply: 20 Volts, 20 Ω , 0.1 μ sec Max. Rise Time	0.7	μ sec
Min. Critical dv/dt exponential to V_{DRM}	dv/dt	$T_J = 125^{\circ}\text{C}, \text{Gate Open}$	200	V/ μ sec
Thermal				
Maximum Thermal Resistance, [Ⓞ] double sided cooling				
Junction to Case	$R_{\theta JC}$.06	$^{\circ}\text{C}/\text{Watt}$
Case to Sink, Lubricated	$R_{\theta CS}$.02	$^{\circ}\text{C}/\text{Watt}$
Gate—Maximum Parameters				
Gate Current to Trigger	I_{GT}	$V_D = 6\text{Vdc}, T_J = 25^{\circ}\text{C}, R_L = 3\Omega$	200	mA
Gate Voltage to Trigger	V_{GT}	$T_J = -40^{\circ}\text{C to } 125^{\circ}\text{C}, V_D = \text{Vdc}, R_L = 3\Omega$	5	Volts
Non-Trigging Gate Voltage	V_{GDM}	$T_J = 125^{\circ}\text{C}, \text{rated } V_{DRM}, R_L = 1000\Omega$.15	Volts
Peak Forward Gate Current	I_{GTM}		10	Amperes
Peak Reverse Gate Voltage	V_{GRM}		5	Volts

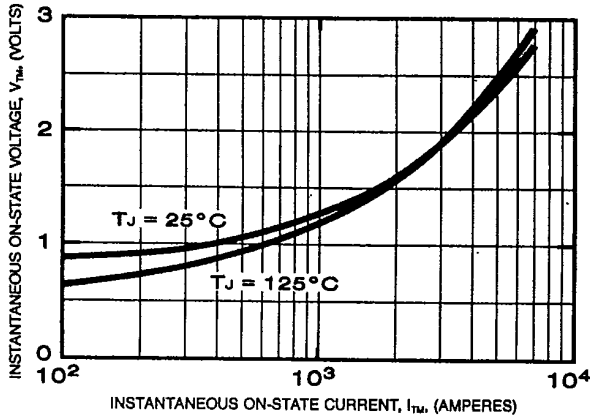
[Ⓞ] Consult recommended mounting procedures.



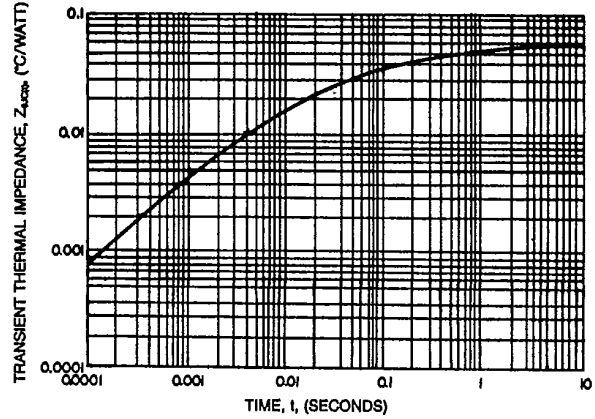
Powerex, Inc., Hills Street, Youngwood, Pennsylvania 15697 (412) 925-7272
 Powerex Europe, S.A., 428 Ave. G. Durand, BP107, 72003 LeMans, France (43) 72.75.15

C390_X500
 Phase Control SCR
 620 Amperes Avg/100-600 Volts

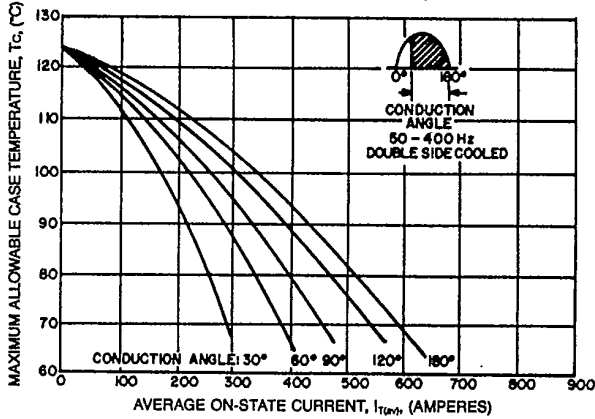
MAXIMUM ON-STATE CHARACTERISTICS



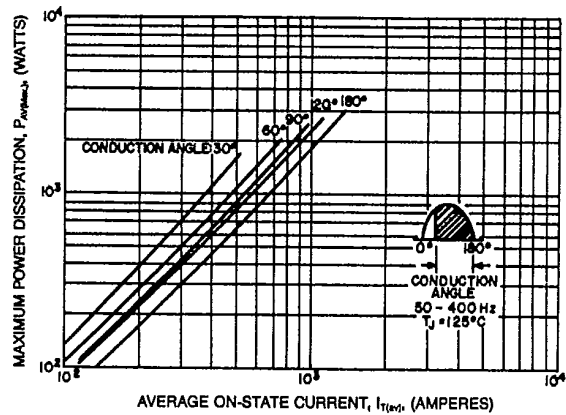
TRANSIENT THERMAL IMPEDANCE CHARACTERISTICS (JUNCTION TO CASE)



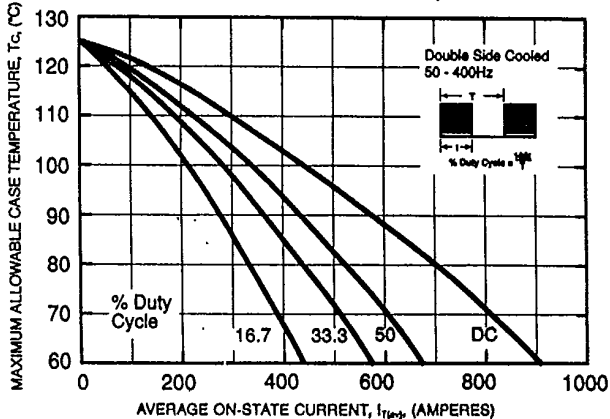
MAXIMUM ALLOWABLE CASE TEMPERATURE (SINUSOIDAL WAVEFORM)



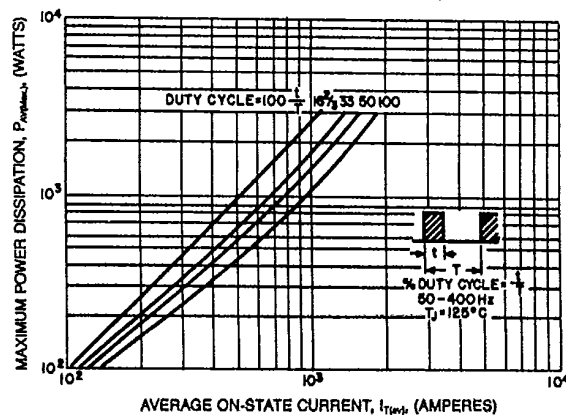
MAXIMUM ON-STATE POWER DISSIPATION (SINUSOIDAL WAVEFORM)



MAXIMUM ALLOWABLE CASE TEMPERATURE (RECTANGULAR WAVEFORM)



MAXIMUM ON-STATE POWER DISSIPATION (RECTANGULAR WAVEFORM)



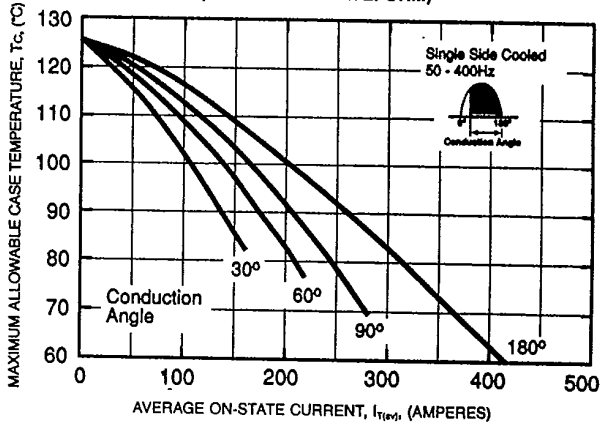


T-25-20

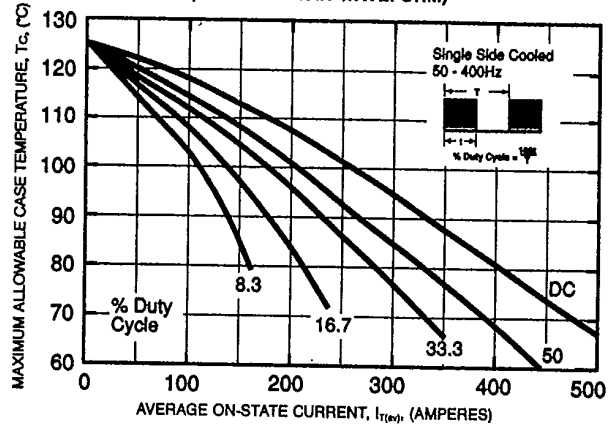
Powerex, Inc., Hillis Street, Youngwood, Pennsylvania 15697 (412) 925-7272
 Powerex Europe, S.A., 428 Ave. G. Durand, BP107, 72003 LeMans, France (43) 72.75.15

C390_X500
 Phase Control SCR
 620 Amperes Avg/100-600 Volts

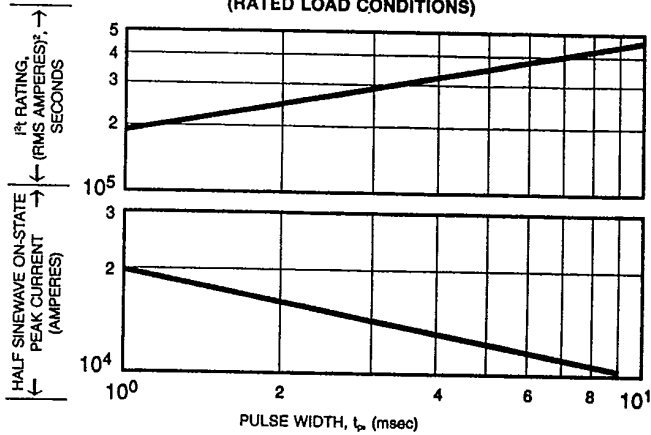
MAXIMUM ALLOWABLE CASE TEMPERATURE (SINUSOIDAL WAVEFORM)



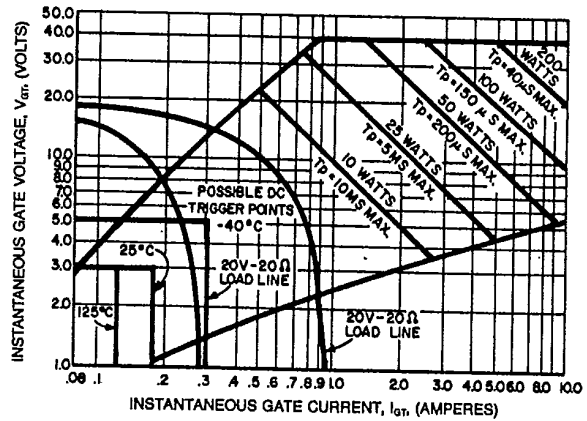
MAXIMUM ALLOWABLE CASE TEMPERATURE (RECTANGULAR WAVEFORM)



SUB-CYCLE SURGE AND I^2t RATINGS (RATED LOAD CONDITIONS)



GATE CHARACTERISTICS



NOTES:

1. Maximum allowable average gate dissipation = 5 watts.
 2. The locus of possible dc trigger points lie outside the boundaries shown at various case temperatures.
 3. T_p = Rectangular gate current pulse width (5 μs min. duration; 1.0 μs max. rise time for 20V, 65 Ω source).
 4. 20 V — 20 Ω is the minimum gate source load line when rate of circuit current rise > 100 Amp/μs or anode rate of current rise > 200 Amps/μs (T_p = 5 μs min., 0.5 μs max. rise time).
- Maximum long-term repetitive anode di/dt = 500 Amps/μs with 20V — 20 Ω gate source.



LittleDiode supplies new, hard to find or obsolete electronic components and semiconductors all over the world.

With over two million different components listed you are sure to find the part you need.

Feel free to visit us today at our online store:

LittleDiode.com

Looking forward to providing you with the best possible service.