

HIP3™ Variable Attenuator for UMTS Base Stations



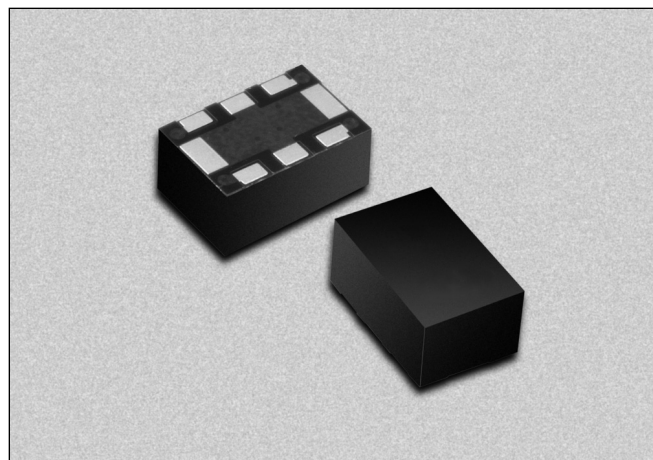
AV133-315

Features

- 23 dB Attenuation Range
- 1.5 dB Insertion Loss, 1.5 SWR
- 0–12 V Control Voltage
- 43 dBm IP3
- Small Footprint LGA Package
- Designed for UMTS Base Stations

Description

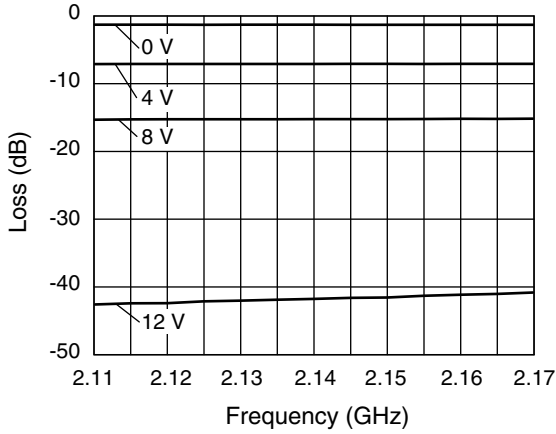
The AV133-315 is a voltage controlled variable attenuator from Alpha's series of HIP3™ components. It is specifically designed and specified for use as a wide dynamic range low distortion attenuator for UMTS base station applications centered at 2140 MHz. The AV133-315 employs a monolithic quadrature hybrid and a pair of silicon PIN diodes to achieve the specified low distortion performance. It operates from 0–12 V at 1.6 mA typical control current at maximum attenuation. The AV133-315 is packaged in a small outline LGA (Land Grid Array) surface mount package with the internal elements affixed to an organic BT substrate.



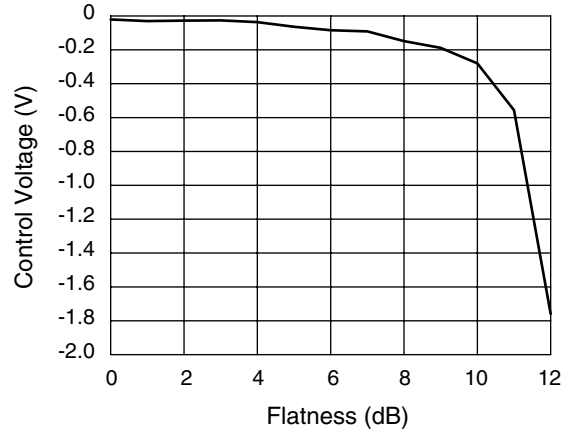
Electrical Specifications at 25°C

Parameter	Condition	Min.	Typ.	Max.	Unit
UMTS Frequency Range (BW)	$F_O \pm 12.5$ MHz	2110		2170	MHz
Control Voltage (C_V) Range		0		12	V
Insertion Loss in BW	$C_V = 0$ V			1.5	dB
Attenuation Range	At F_O , $C_V = 12$ V	23			dB
VSWR in BW				1.5	
IP3	2140/2145 MHz, $C_V = 0$ V	43			dBm
IM3	8 dBm			-70	dBc

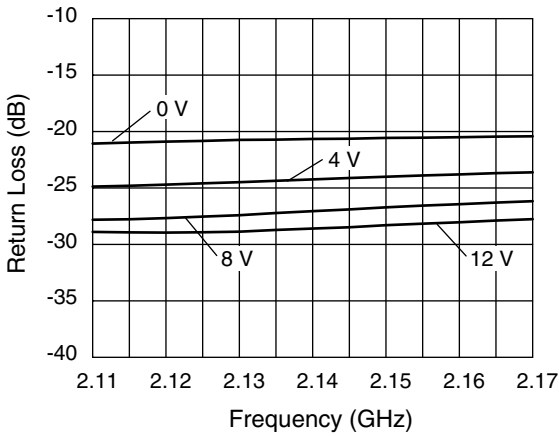
Typical Performance Data



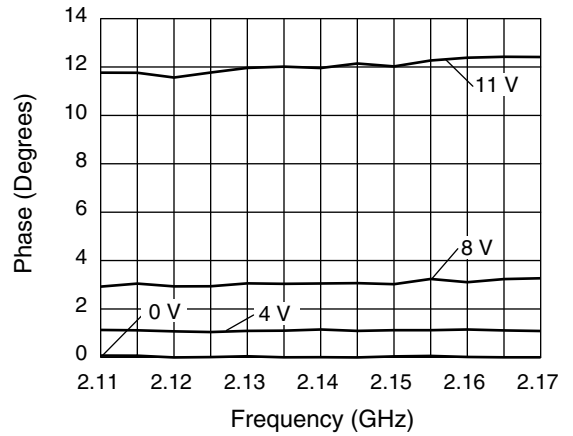
Insertion Loss vs. Frequency and Control Voltage — UMTS Band



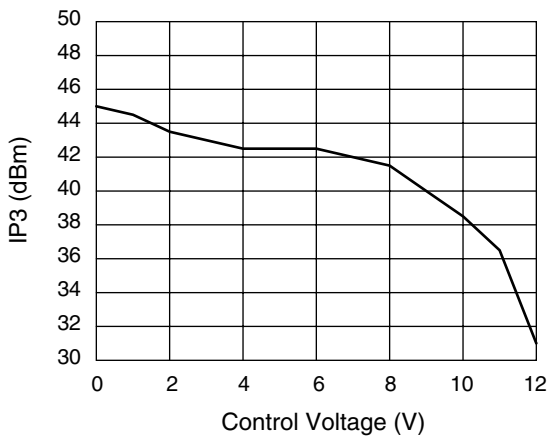
Insertion Loss Flatness vs. Control Voltage — UMTS Band



Input/Output Return Loss vs. Frequency and Control Voltage — UMTS Band

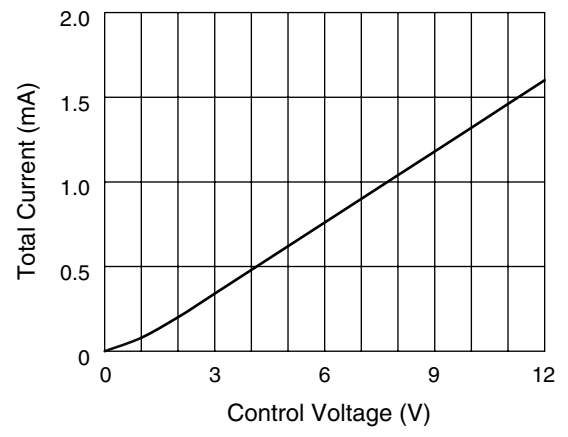


Phase vs. Frequency and Control Voltage — UMTS Band



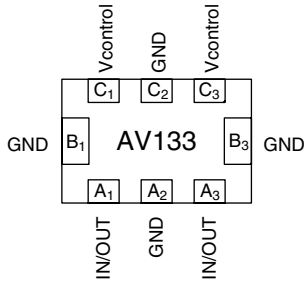
3rd Order Intermod Intercept vs. Control Voltage

RF₁ = 2.140 GHz, RF₂ = 2.145 GHz @ 8 dBm



Total Current vs. Control Voltage

Pin Out (Bottom View)



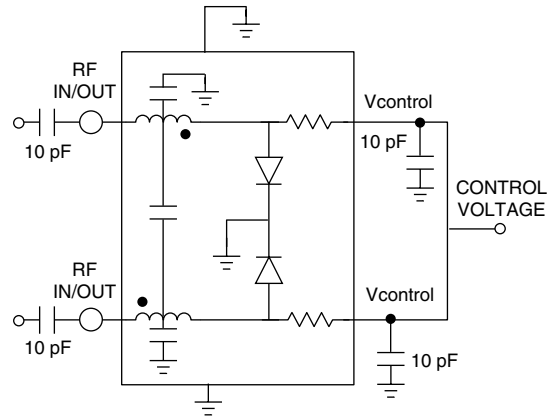
Terminal No.	Terminal Name
A ₁	IN/OUT
A ₂	GND
A ₃	IN/OUT
B ₁	GND
B ₃	GND
C ₁	Vcontrol
C ₂	GND
C ₃	Vcontrol

Absolute Maximum Ratings

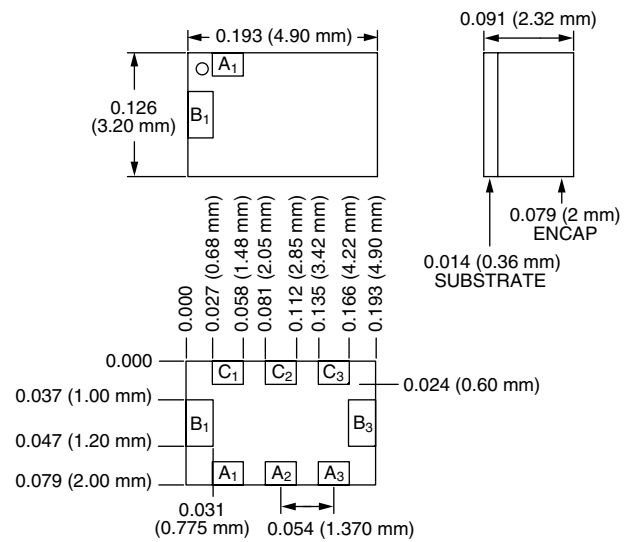
Characteristic	Value
RF Input Power	0.5 W CW, 4 W @ 12.5% Duty Cycle
Control Voltage	15 V
Control Current	50 mA Each Diode
Operating Temperature	-40 to +85°C
Storage Temperature	-40 to +85°C
Maximum Reverse Diode Voltage	-10 V
Electrostatic Discharge	+125 V

Note: Operating this device above any of these parameters may cause irreversible damage.

Connection Diagram



-315





LittleDiode supplies new, hard to find or obsolete electronic components and semiconductors all over the world.

With over two million different components listed you are sure to find the part you need.

Feel free to visit us today at our online store:

LittleDiode.com

Looking forward to providing you with the best possible service.