

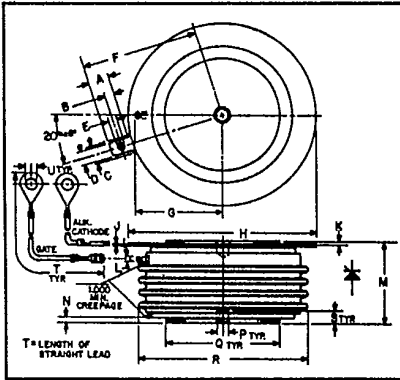


C390_X550

T-25-20

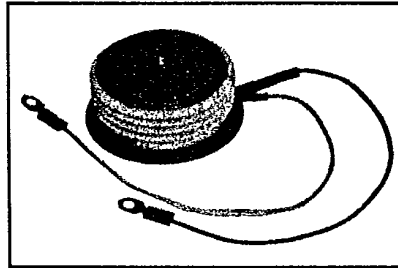
Powerex, Inc. Hillis Street, Youngwood, Pennsylvania 15697 (412) 925-7272
 Powerex Europe, S.A., 428 Ave. G. Durand, BP107, 72003 LeMans, France (43) 72.75.15

Phase Control SCR
620 Amperes Avg
100-400 Volts



C390_X550
Outline Drawing

Dimensions	Inches		Millimeters	
	Min.	Max.	Min.	Max.
A	.240	.260	6.096	6.604
B	.110	.130	2.794	3.302
C	.245	—	6.223	—
D	.186	.191	4.724	4.851
E	.060	.075	1.524	1.905
F	—	1.430	—	36.32
G	—	1.065	—	27.051
H	2.200	2.500	55.88	63.50
J	.011	.019	2.794	3.483
K	.030	.130	.762	3.302
L	.056	.060	1.422	1.524
M	1.000	1.065	25.40	27.05
N	.030	.096	.762	2.438
P	.130	.150	3.302	3.810
Q	1.300	1.345	33.02	34.16
R	—	2.150	—	54.61
S	.067	.803	1.702	2.110
T	12.200	12.360	309.9	313.9
U	.137	.153	3.480	3.886



C390_X550
Phase Control SCR
620 Amperes/100-400 Volts

Description

Powerex Silicon Controlled Rectifiers (SCR) are designed for phase control applications. These are all-diffused, Press-Pak (Pow-R-Disc) devices employing the field-proven amplifying (di/namic) gate.

Features:

- Low On-State Voltage
- High di/dt
- High dv/dt
- Hermetic Packaging
- Excellent Surge and I²t Ratings
- High Temperature Operation

Applications:

- Power Supplies
- Battery Chargers
- Motor Control
- Light Dimmers
- VAR Generators

Ordering Information

Example: Select the complete nine digit part number you desire from the table - i.e. C390BX550 is a 200 Volt, 620 Ampere Phase Control SCR.

Type	Voltage		Current
	V _{ORM} V _{RRM}	Code	
C390_X550	100	A	620
	200	B	
	300	C	
	400	D	



T-25-20

Powerex, Inc., Hills Street, Youngwood, Pennsylvania 15697 (412) 925-7272

Powerex Europe, S.A., 428 Ave. G. Durand, BP107, 72003 LeMans, France (43) 72.75.15

C390_X550

Phase Control SCR

620 Amperes Avg/100-400 Volts

Absolute Maximum Ratings

	Symbol	C390_X550	Units
RMS On-State Current	$I_{T(RMS)}$	975	Amperes
Average On-State Current	$I_{T(av)}$	620	Amperes
Peak One-Cycle Surge (Non Repetitive) On-State Current (60Hz)	I_{TSM}	9000	Amperes
Peak One-Cycle Surge (Non-Repetitive) On-State Current (50Hz)	I_{TSM}	8200	Amperes
Critical Rate-of-Rise of On-State Current (Non-Repetitive)	di/dt	800	Amperes/ μ s
Critical Rate-of-Rise of On-State Current (Repetitive)	di/dt	500	Amperes/ μ s
I^2t (for Fusing), One Cycle at 60Hz	I^2t	335,000	A ² sec
Peak Gate Power Dissipation, 40 μ sec Pulse	P_{GM}	200	Watts
Average Gate Power Dissipation	$P_{G(av)}$	5	Watts
Storage Temperature	T_{STG}	-40 to 150	°C
Operating Temperature	T_J	-40 to 150	°C
Mounting Force ^①		1800 to 2200	lb.
Mounting Force ^①		8 to 9.8	kN

① Consult recommended mounting procedures.



T-25-20

Powerex, Inc., Hillis Street, Youngwood, Pennsylvania 15697 (412) 925-7272
 Powerex Europe, S.A., 428 Ave. G. Durand, BP107, 72003 LeMans, France (43) 72.75.15

C390_X550
 Phase Control SCR
 620 Amperes Avg/100-400 Volts

Electrical and Thermal Characteristics

Characteristics	Symbol	Test Conditions	C390_X550	Units
Voltage—Blocking State Maximums				
Forward Leakage, Peak	I_{DRM}	$T_J = 150^\circ\text{C}$, $V = \text{rated } V_{DRM}$	50	mA
Reverse Leakage, Peak	I_{RRM}	$T_J = 150^\circ\text{C}$, $V = \text{rated } V_{RRM}$	50	mA
Current—Conducting State Maximums				
Peak On-State Voltage	V_{TM}	$T_J = 25^\circ\text{C}$, $I_T = 3000\text{A}$, Duty Cycle $\leq 0.01\%$	1.9	Volts
Switching				
Typical Turn-Off Time	t_q	$T_J = 150^\circ\text{C}$; $I_{TM} = 500\text{A}$; $V_R = 50\text{V Min.}$; V_{DRM} (Reapplied); Rate-of-Rise of Reapplied Off-State Voltage = $20\text{V}/\mu\text{sec}$ (linear); Commutation $di/dt = 25\text{A}/\mu\text{sec}$; Repetition Rate = 1 pps; Gate Bias During Turn-off Interval = 0 Volts, 100Ω	125	μsec
Typical Delay Time	t_d	$T_J = 25^\circ\text{C}$; $I_{TM} = 50\text{A}$; V_{DRM} Rated. Gate Supply: 20 Volts, 20Ω , $0.1\ \mu\text{sec}$ Max. Rise Time	1	μsec
Min. Critical dv/dt exponential to V_{DRM}	dv/dt		200	$\text{V}/\mu\text{sec}$
Thermal				
Maximum Thermal Resistance, [ⓐ] double sided cooling				
Junction to Case	$R_{\theta JC}$.06	$^\circ\text{C}/\text{Watt}$
Case to Sink, Lubricated	$R_{\theta CS}$.02	$^\circ\text{C}/\text{Watt}$
Gate—Maximum Parameters				
Gate Current to Trigger	I_{GT}	$T_J = 25^\circ\text{C}$, $V_D = 6\text{Vdc}$, $R_L = 3\Omega$	200	mA
Gate Voltage to Trigger	V_{GT}	$T_J = -40^\circ\text{C}$ to 150°C , $V_D = 6\text{Vdc}$, $R_L = 3\Omega$	5	Volts
Non-Triggerring Gate Voltage	V_{GDM}	$T_J = 150^\circ\text{C}$, rated V_{DRM} , $R_L = 1000\Omega$.15	Volts
Peak Forward Gate Current	I_{GTM}		10	Amperes
Peak Reverse Gate Voltage	V_{GRM}		5	Volts

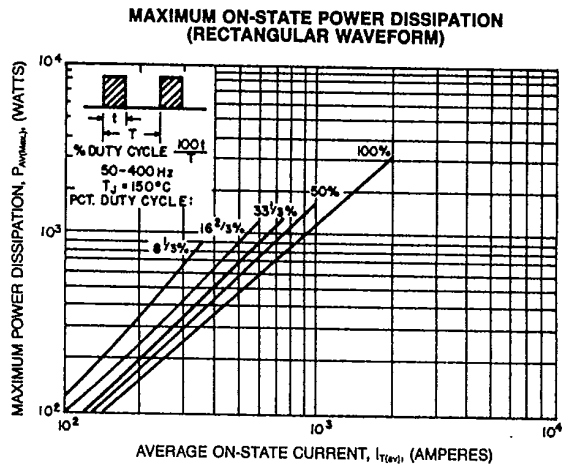
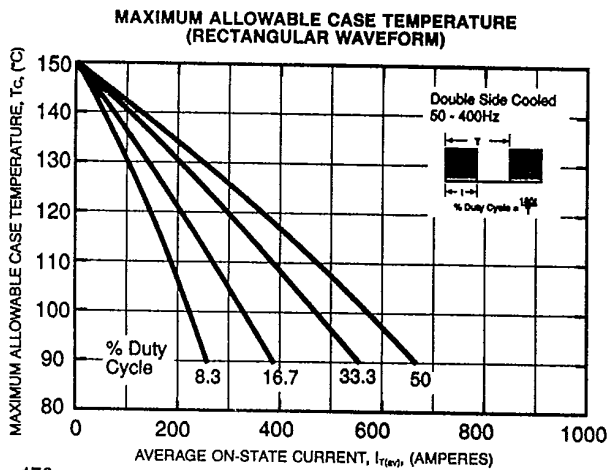
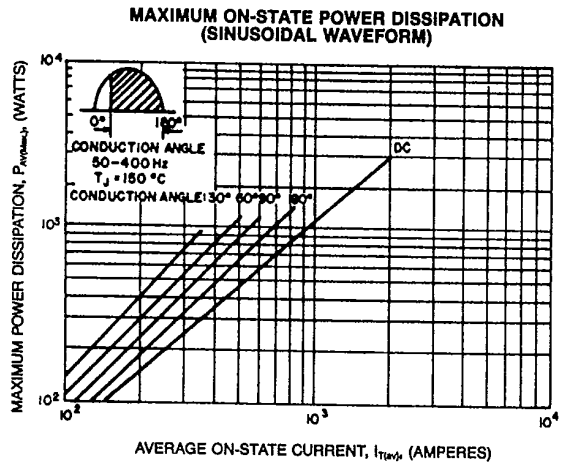
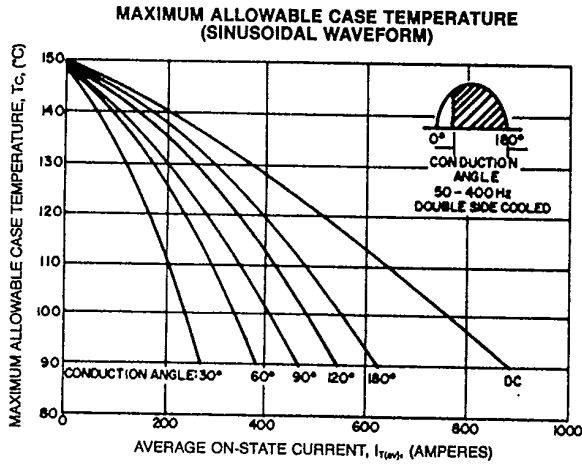
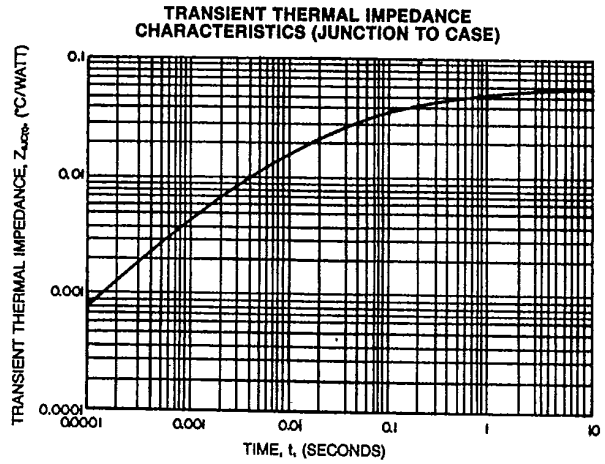
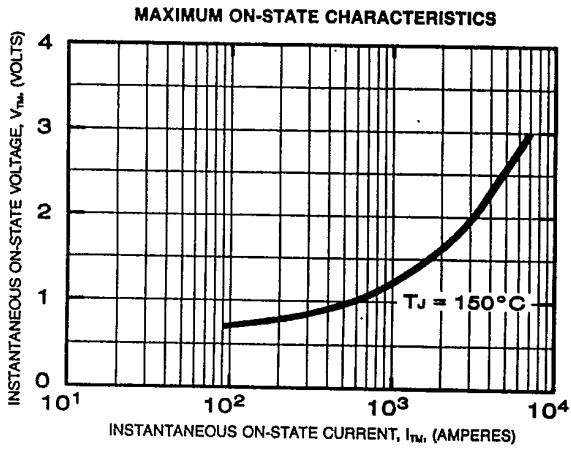
[ⓐ] Consult recommended mounting procedures.



T-25-20

Powerex, Inc., Hillis Street, Youngwood, Pennsylvania 15697 (412) 925-7272
 Powerex Europe, S.A., 428 Ave. G. Durand, BP107, 72003 LeMans, France (43) 72.75.15

C390_X550
 Phase Control SCR
 620 Amperes Avg/100-400 Volts





LittleDiode supplies new, hard to find or obsolete electronic components and semiconductors all over the world.

With over two million different components listed you are sure to find the part you need.

Feel free to visit us today at our online store:

LittleDiode.com

Looking forward to providing you with the best possible service.