

Video signal switcher

BA7649A / BA7649AF

The BA7649A and BA7649AF are five-channel analog multiplexers (the IN5 pin can be used a mute input) designed for use in video cassette recorders. They feature large dynamic range, and wide operating frequency range, and have sync-tip inputs which are ideal for switching video signals.

●Applications

Video cassette recorders and televisions

●Features

- 1) 5-input / 1-output switches.
- 2) Built-in mute (the IN5 pin can be use a mute input).
- 3) Sync-tip clamp inputs.
- 4) Wide operating supply voltage range (4.5V to 13.0V).
- 5) Low power consumption (48mW Typ.).
- 6) Excellent frequency characteristics (10MHz, 0dB Typ.).
- 7) Wide dynamic range (3.5V_{P-P} Typ.).
- 8) Low interchannel crosstalk (– 65dB Typ., f = 4.43MHz).
- 9) DIP / SOP 14 pin package.

●Absolute maximum ratings (Ta = 25°C)

BA7649A

Parameter	Symbol	Limits	Unit
Power supply voltage	V _{CC}	13.5	V
Allowable current	P _d	1100*	mW
Operating temperature	T _{opr}	– 25 ~ + 75	°C
Storage temperature	T _{stg}	– 55 ~ + 125	°C

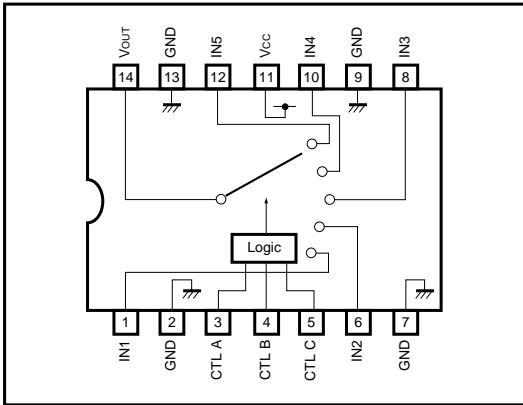
* Reduced by 11.0mW for each increase in Ta of 1°C over 25°C.

BA7649AF

Parameter	Symbol	Limits	Unit
Power supply voltage	V _{CC}	13.5	V
Allowable current	P _d	450*	mW
Operating temperature	T _{opr}	– 25 ~ + 75	°C
Storage temperature	T _{stg}	– 55 ~ + 125	°C

* Reduced by 4.5mW for each increase in Ta of 1°C over 25°C when mounted on a 50mm × 50mm PCB board.

●Block diagram



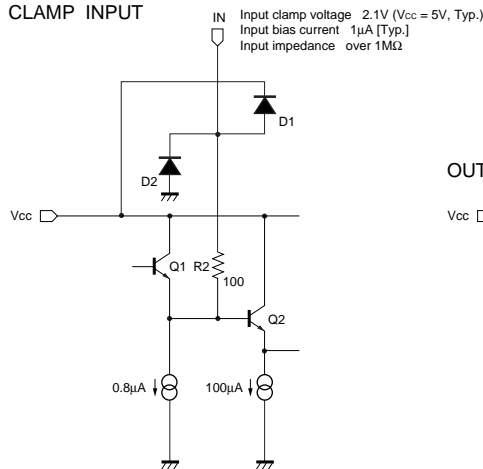
●Truth table

CTLA	CTLB	CTLC	OUT
L (OPEN)	L (OPEN)	L (OPEN)	IN1
L (OPEN)	H	L (OPEN)	IN2
H	L (OPEN)	L (OPEN)	IN3
H	H	L (OPEN)	IN4
*	*	H	MUTE (IN5)

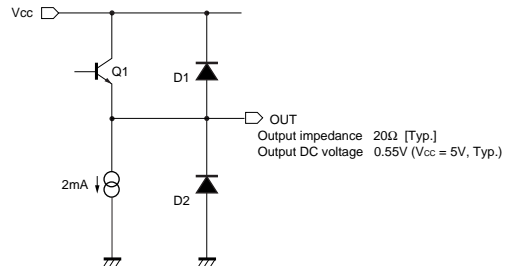
* Either "L (open)" or "H".

●Equivalent circuits

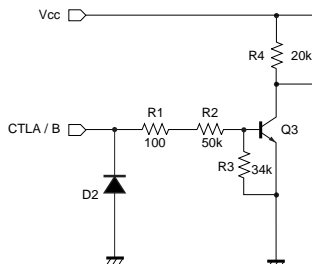
CLAMP INPUT



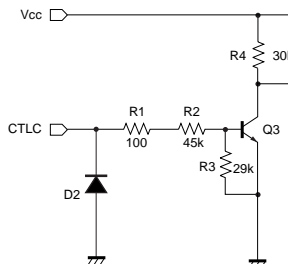
OUTPUT



CTLA / CTLB



CTLC



●Electrical characteristics (unless otherwise noted, Ta = 25°C and Vcc = 5V)

Parameter	Symbol	Min.	Typ.	Max.	Unit	Conditions
Operating voltage	V _{CC}	4.5	—	13.0	V	—
Supply current	I _{CC}	—	9.5	14.5	mA	—
Maximum output level	V _{om}	3.0	3.5	—	V _{P-P}	f = 1kHz, THD = 0.5%
Voltage gain	G _V	-0.5	0	0.5	dB	f = 1MHz, V _{IN} = 1.0V _{P-P}
Interchannel crosstalk	C _T	—	-65	—	dB	f = 4.43MHz, V _{IN} = 1.0V _{P-P}
Frequency characteristics	G _f	-3.0	0	1.0	dB	f = 10MHz / 1MHz, V _{IN} = 1.0V _{P-P}
CTL pin switching level A	V _{TH-A}	1.0	2.0	3.0	V	—
CTL pin switching level B	V _{TH-B}	1.0	2.0	3.0	V	—
CTL pin switching level C	V _{TH-C}	1.0	2.0	3.0	V	—

○Not designed for radiation resistance.

●Measurement circuit

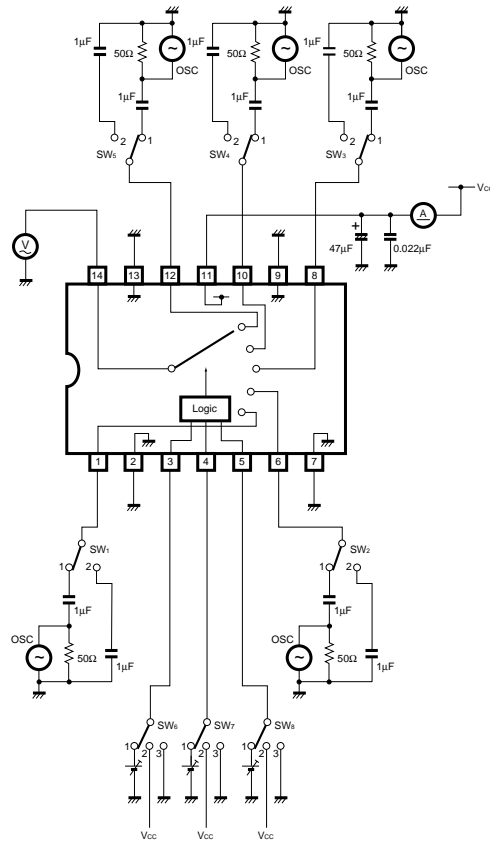


Fig. 1

●Measurement conditions

Parameter		Symbol	Switch settings								Measurement method
			SW ₁	SW ₂	SW ₃	SW ₄	SW ₅	SW ₆	SW ₇	SW ₈	
Current dissipation		I _{CC}	2	2	2	2	2	3	3	3	Ammeter
Maximum output level	IN 1	V _{om}	1	2	2	2	2	3	3	3	f = 1kHz, THD = 0.5% Note 1
	IN 2	V _{om}	2	1	2	2	2	3	2	3	
	IN 3	V _{om}	2	2	1	2	2	2	3	3	
	IN 4	V _{om}	2	2	2	1	2	2	2	3	
	IN 5	V _{om}	2	2	2	2	1	*	*	2	
Voltage gain	IN 1	G _V	1	2	2	2	2	3	3	3	f = 1MHz, V _{IN} = 1V _{P-P} Note 2
	IN 2	G _V	2	1	2	2	2	3	2	3	
	IN 3	G _V	2	2	1	2	2	2	3	3	
	IN 4	G _V	2	2	2	1	2	2	2	3	
	IN 5	G _V	2	2	2	2	1	*	*	2	
Interchannel crosstalk	IN1→1N2	C _T	1	2	2	2	2	3	2	3	f = 4.43MHz, V _{IN} = 1V _{P-P} Note 3
	IN1→1N3	C _T	1	2	2	2	2	2	3	3	
	IN1→1N4	C _T	1	2	2	2	2	2	2	3	
	IN1→1N5	C _T	1	2	2	2	2	*	*	2	
	IN2→1N3	C _T	2	1	2	2	2	2	3	3	
	IN2→1N4	C _T	2	1	2	2	2	2	2	3	
	IN2→1N5	C _T	2	1	2	2	2	*	*	2	
	IN3→1N4	C _T	2	2	1	2	2	2	2	3	
	IN3→1N5	C _T	2	2	1	2	2	*	*	2	
Frequency characteristic	IN 1	G _f	1	2	2	2	2	3	3	3	f = 10MHz, f = 1MHz, V _{IN} = 1V _{P-P} Note 4
	IN 2	G _f	2	1	2	2	2	3	2	3	
	IN 3	G _f	2	2	1	2	2	2	3	3	
	IN 4	G _f	2	2	2	1	2	2	2	3	
	IN 5	G _f	2	2	2	2	1	*	*	2	
CTL pin switching level	CTLA	V _{TH}	2	2	1	2	2	1	3	3	Note 5
	CTLB	V _{TH}	2	1	2	2	2	3	1	3	
	CTLC	V _{TH}	2	2	2	2	1	*	*	1	

* Anywhere is possible.

Note 1: Connect a distortion meter to the output, and input a f = 1kHz sine wave. Adjust the output level until the output distortion is 0.5%.

This output voltage at this time is the maximum output level V_{om} (V_{P-P}).

Note 2: Input a 1V_{P-P}, 1MHz sine wave. The voltage gain is given by G_V = 20 log (V_{OUT} / V_{IN}).

Note 3: Input a 1V_{P-P}, 4.43MHz sine wave. The interchannel crosstalk is given by C_T = 20 log (V_{OUT} / V_{IN}).

Note 4: Input 1V_{P-P}, 1MHz and 10MHz sine waves. The frequency characteristic is given by G_f = 20 log (V_{OUT} (f = 10MHz) / V_{OUT} (f = 1MHz)).

Note 5: Input a 1V_{P-P}, 1MHz sine wave. Reduce the CTL pin voltage from V_{CC}.

The CTL pin switching level (V_{TH}) is the CTL pin voltage at which the V_{OUT} level drops below 20mV_{P-P}.

●Electrical characteristic curves

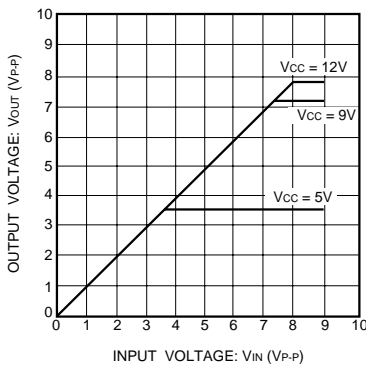


Fig. 2 V_{IN} vs. V_{OUT} (f = 1kHz)

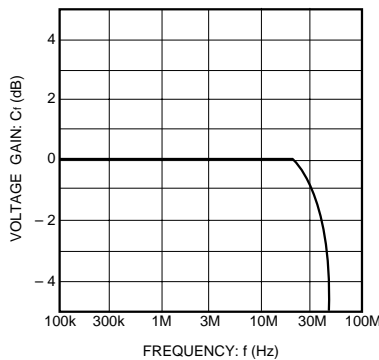


Fig. 3 Frequency characteristics

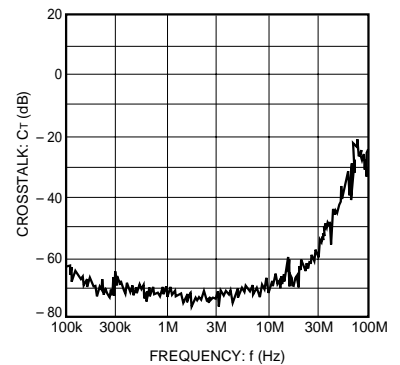
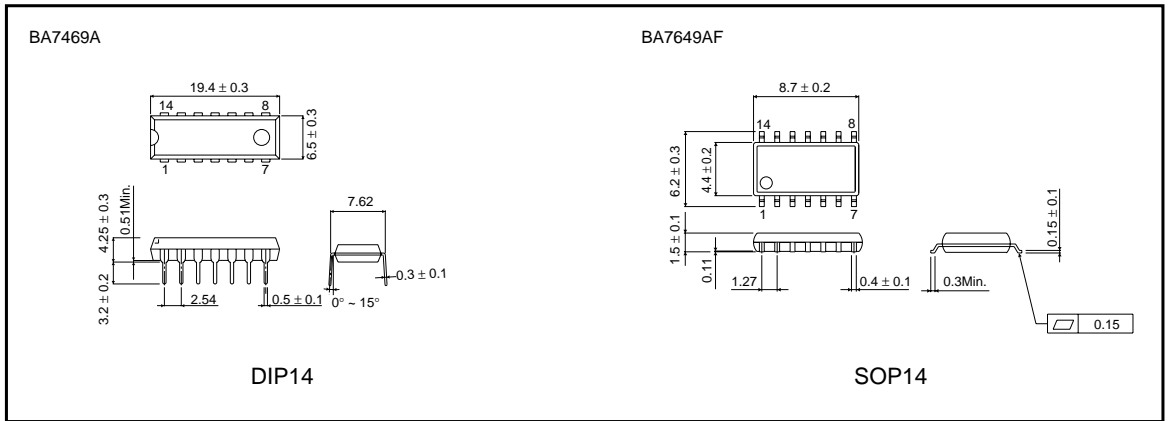


Fig. 4 Interchannel crosstalk

● External dimensions (Units: mm)



This datasheet has been downloaded from:

www.DatasheetCatalog.com

Datasheets for electronic components.



LittleDiode supplies new, hard to find or obsolete electronic components and semiconductors all over the world.

With over two million different components listed you are sure to find the part you need.

Feel free to visit us today at our online store:

LittleDiode.com

Looking forward to providing you with the best possible service.