

BA9221 BA9221F

Digital-to-analog converter, 12 bit

The BA9221 and BA9221F are 12-bit D/A converters.

These ICs have a very fast conversion time. They are for use on machines with a digital-to-analog control system.

Features

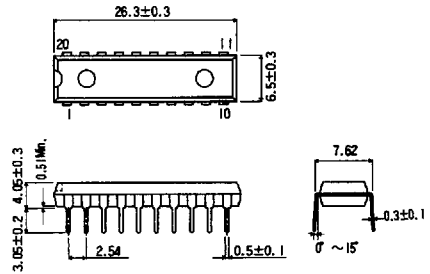
- available in DIP20 and SOP22 packages
- 12-bit monotonic conversion
- full scale current (I_{FS}) = 4 mA
- setting speed is as low as 250 ns
- built in reference supply voltage
- can be as multipliers

Applications

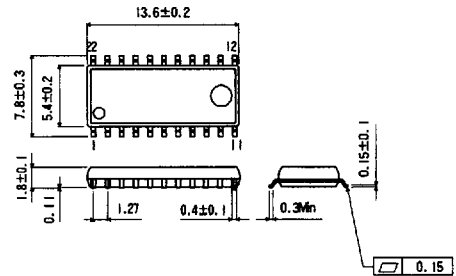
- digital audio equipment
- digital control attenuators
- electrical musical instruments
- servo controllers
- digitally controlled power supply

Dimensions (Units : mm)

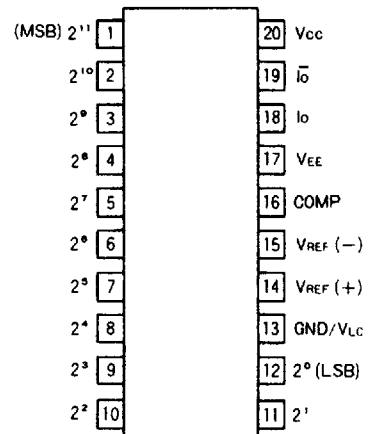
BA9221 (DIP20)



BA9221F (SOP22)

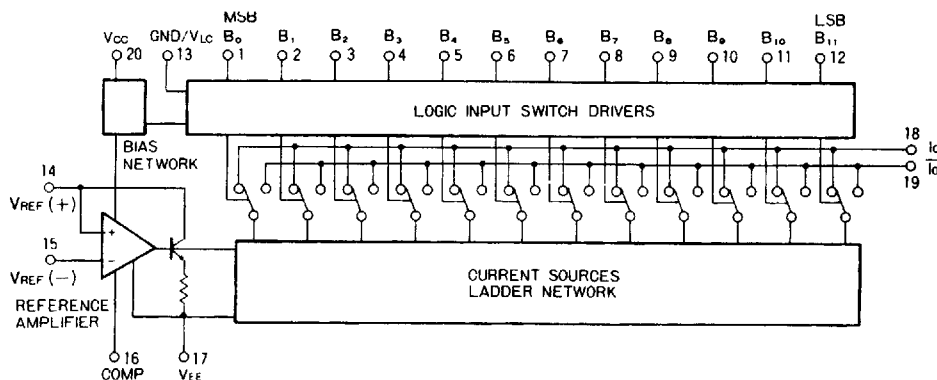


Pin connections



BA9221, BA9221F Digital-to-analog converter

Block diagram



Absolute maximum ratings ($T_a = 25^\circ\text{C}$)

Parameter	Symbol	Limits	Unit	Conditions
Power supply voltage	V_{CC}	+7	V	
	V_{EE}	-18		
Power dissipation	BA9221	600	mV	Reduce power by 6 mW/ $^\circ\text{C}$ for each degree above 25 $^\circ\text{C}$.
	BA9221F	550		Reduce power by 5.5 mW/ $^\circ\text{C}$ for each degree above 25 $^\circ\text{C}$.
Reference input pin V_{14} , V_{15}	V_{14}, V_{15}	$V_{EE} \sim V_{CC}$	V	
Logic input pin	V_{IN}	-5 ~ V_{CC}	V	
Operating temperature	BA9221	-25 ~ +70	$^\circ\text{C}$	
	BA9221F	-25 ~ +55		
Storage temperature	T_{stg}	-50 ~ +125	$^\circ\text{C}$	

Code formats

Data input		Analog output
MSB	LSB	V_O (V)
0	11111111111111	9.9951
0	11111111111110	9.9902
0	0000000000001	0.0049
0	0000000000000	0.0000
1	11111111111111	-0.0049
1	0000000000001	-9.9951
1	0000000000000	-10.0000

Electrical characteristics ($T_a = 25^\circ\text{C}$, $V_{CC} = +5\text{ V}$, $V_{EE} = -15\text{ V}$)

Parameter	Symbol	Min	Typical	Max	Unit	Conditions	Test figure
Resolving power		12	12	12	bit		1
Monotonicity		12	12	12	bit		1
Differential nonlinearity	DNL	12			LSB		1
Nonlinearity	NL			0.05	%FS		1
Full scale current	I_{FS}		3.999		mA	$V_{REF} = 10.000\text{ V}$	1
Current temperature coefficient, full scale	TCI_{FS}		± 10		ppm/ $^\circ\text{C}$		1
Current asymmetry, full scale	I_{FSS}			± 2.0	μA	$I_{FS} - \overline{I_{FS}}$	1
Current, zero scale	I_{ZS}			0.1	μA		1
Setting time	t_S		250		ns	$T_a = 25^\circ\text{C}$	3
High level logic input voltage	V_{IH}	2.0			V		6
Low level logic input voltage	V_{IL}			0.8	V		6
Logic input current	I_{IN}			60	μA	$V_{IN} = 5\text{ V} \sim +5\text{ V}$	6
Reference power supply input current	I_{REF}	0.2	1.0	1.1	mA		2
Reference power supply input bias current	I_{IS}		-0.5	-2.0	μA		1
Reference power supply input slew rate	dl/dt	4.0	8.0		mA/ μs	$R_{14} = 800\ \Omega, V_{CC} = 0\ \text{pF}$	4
Power supply voltage dependance	PSS+			± 0.0001	%FS/%	$V_{EE} = 4.5\text{ V} \sim 5.5\text{ V}, V_{CC} = -15\text{ V}$	1
	PSS-			± 0.0001	%FS/%	$V_{EE} = 13.5\text{ V} \sim -16.5\text{ V}, V_{CC} = 5\text{ V}$	1
Power supply voltage	V_{CC}	4.5		5.5	V	$V_{OUT} = 0\text{ V}$	1
	V_{EE}	-18		-10.8			1
Operating current	I_{CC}		11.0	18.0	mA	$V_{CC} = 5\text{ V}, V_{EE} = -15\text{ V}$	6
	I_{EE}		-16.0	-22.0			
Power consumption	P_d			420	mW	$V_{CC} = 5\text{ V}, V_{EE} = -15\text{ V}$	6

Figure 3 Setting time test circuit

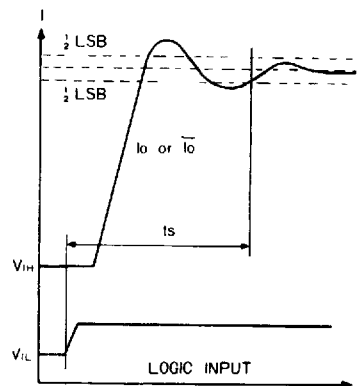
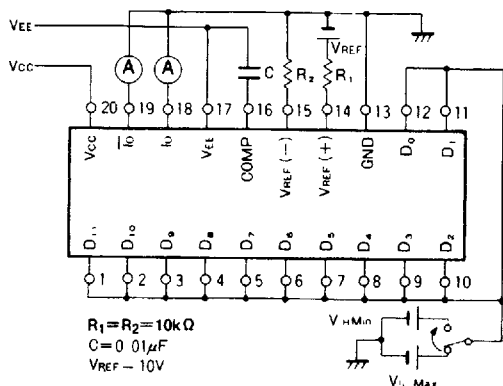


Figure 4 Reference power supply input slew rate test circuit

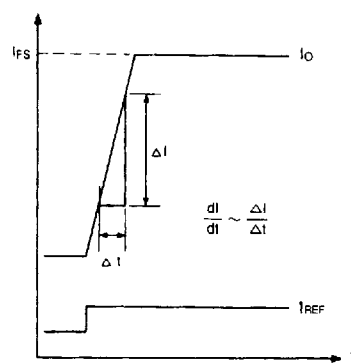
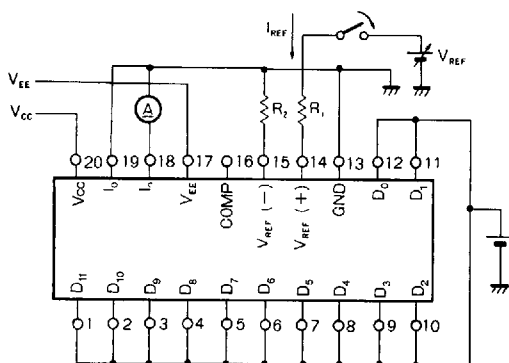


Figure 5 Input HIGH and LOW and input current I_{IN} test circuit

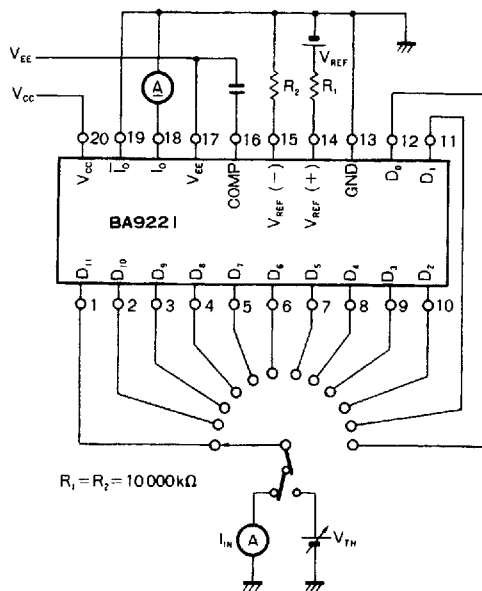


Figure 6 Circuit current I_{CC} and I_{EE} test circuit

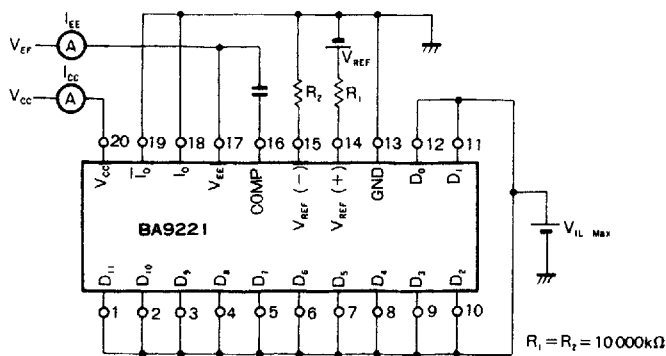


Figure 7 Application example 1—Simple D/A converter

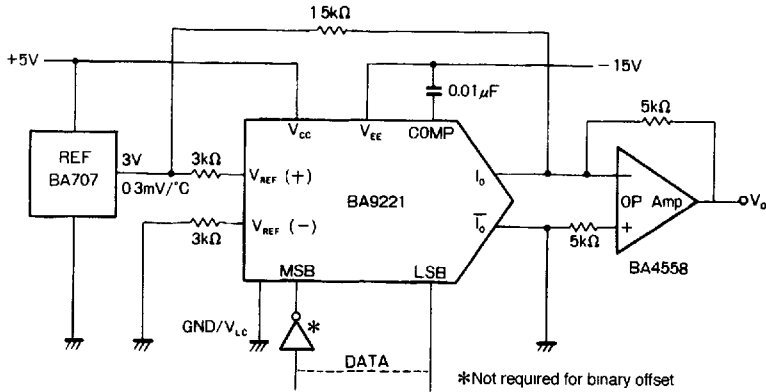
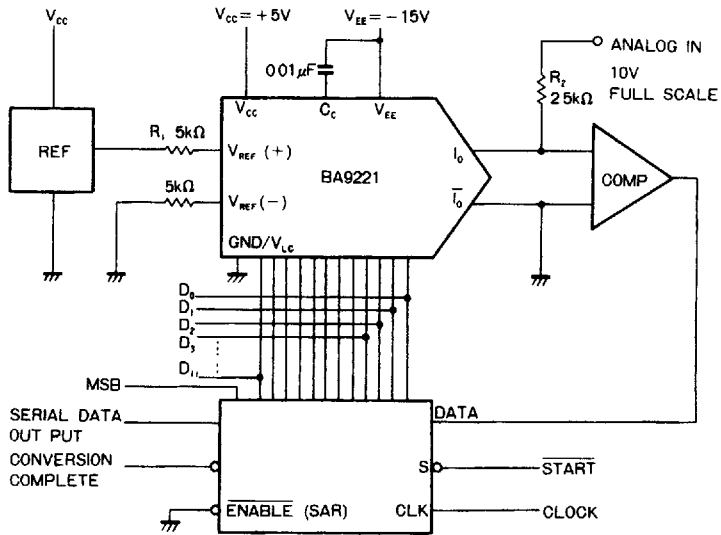


Figure 8 Application example 2—D/A converter structure



Note Adjust gain by putting potentiometer in series with R₁ or R₂

Precautions for use

The pin connections for the BA9221 and the BA9221F are different. Be careful when using these ICs interchangeably.

This datasheet has been downloaded from:

www.DatasheetCatalog.com

Datasheets for electronic components.



LittleDiode supplies new, hard to find or obsolete electronic components and semiconductors all over the world.

With over two million different components listed you are sure to find the part you need.

Feel free to visit us today at our online store:

LittleDiode.com

Looking forward to providing you with the best possible service.