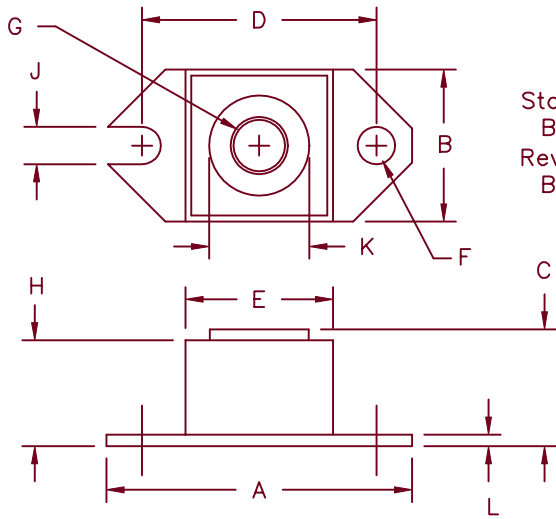


# 120 Amp Schottky Rectifier

## HS12380—HS123100



Std. Polarity  
Base is cathode  
Rev. Polarity  
Base is anode

Dim.	Inches		Millimeter		Notes
	Minimum	Maximum	Minimum	Maximum	
A	1.52	1.56	38.86	39.62	
B	.725	.775	18.42	19.69	
C	.605	.625	15.37	15.88	
D	1.182	1.192	30.02	30.28	
E	.745	.755	18.92	19.18	Sq.
F	.152	.160	3.86	4.06	Dia.
G			1/4-20 UNC-2B		
H	.570	.580	14.49	14.73	
J	.156	.160	3.96	4.06	
K	.495	.505	12.57	12.83	Dia.
L	.120	.130	3.05	3.30	

Microsemi Catalog Number	Industry Part Number	Working Peak Reverse Voltage	Repetitive Peak Reverse Voltage	
HS12380*	123NQ080 MBR12080	80V	80V	<ul style="list-style-type: none"> <li>• Schottky Barrier Rectifier</li> <li>• Guard Ring Protection</li> <li>• 120 Amperes/80 to 100 Volts</li> <li>• 175°C Junction Temperature</li> <li>• Reverse Energy Tested</li> </ul>
HS12390*		90V	90V	
HS123100*	123NQ100 MBR120100	100V	100V	

\*Add Suffix R for Reverse Polarity

### Electrical Characteristics

Average forward current	$I_F(AV)$ 120 Amps	$T_C = 112^\circ C$ , Square wave, $R_{\theta JC} = 0.40^\circ C/W$
Maximum surge current	$I_{FSM}$ 2000 Amps	8.3ms, half sine, $T_J = 175^\circ C$
Maximum repetitive reverse current	$I_R(OV)$ 2 Amps	$f = 1$ KHZ, $25^\circ C$ , 1 $\mu$ sec square wave
Max peak forward voltage	$V_{FM}$ .76 Volts	$I_{FM} = 120A$ : $T_J = 125^\circ C^*$
Max peak forward voltage	$V_{FM}$ 0.91 Volts	$I_{FM} = 120A$ : $T_J = 25^\circ C^*$
Max peak reverse current	$I_{RM}$ 75 mA	$V_{RRM}$ , $T_J = 125^\circ C^*$
Max peak reverse current	$I_{RM}$ 3.0 mA	$V_{RRM}$ , $T_J = 25^\circ C$
Typical junction capacitance	$C_J$ 3000 pF	$V_R = 5.0V$ , $T_C = 25^\circ C$

\*Pulse test: Pulse width 300  $\mu$ sec, Duty cycle 2%

### Thermal and Mechanical Characteristics

Storage temp range	$T_{STG}$	$-55^\circ C$ to $175^\circ C$
Operating junction temp range	$T_J$	$-55^\circ C$ to $175^\circ C$
Max thermal resistance per leg	$R_{\theta JC}$	$0.40^\circ C/W$ Junction to case
Typical thermal resistance (greased)	$R_{\theta CS}$	$0.12^\circ C/W$ Case to sink
Terminal Torque		35-40 inch pounds
Mounting Base Torque		20-25 inch pounds
Weight		1.1 ounces (32 grams) typical

# HS12380 – HS123100

Figure 1  
Typical Forward Characteristics

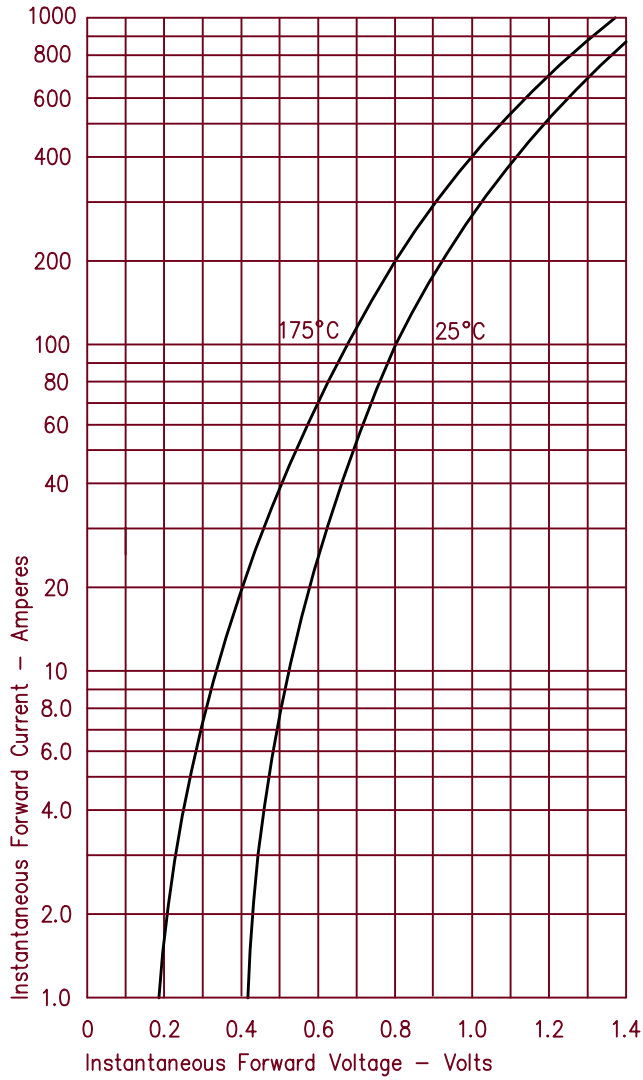


Figure 3  
Typical Junction Capacitance

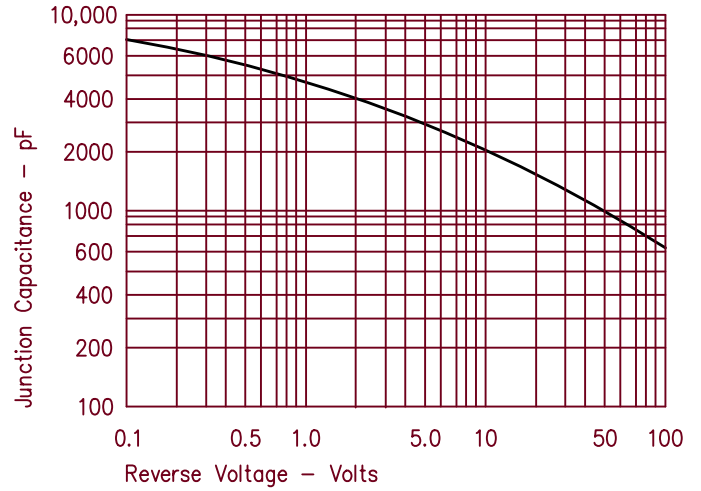


Figure 4  
Forward Current Derating

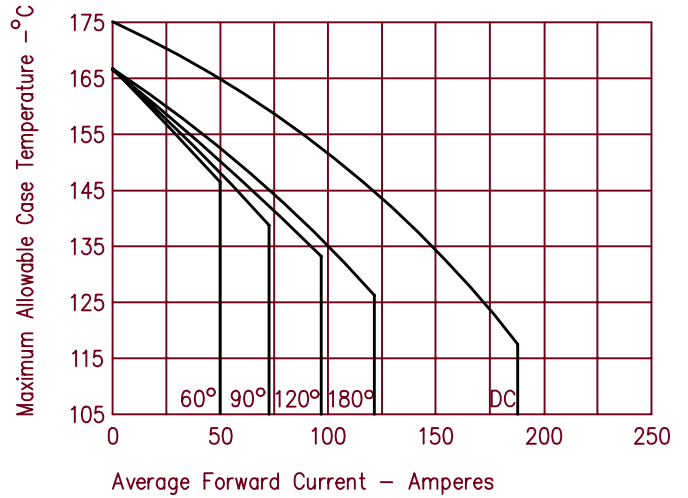


Figure 2  
Typical Reverse Characteristics

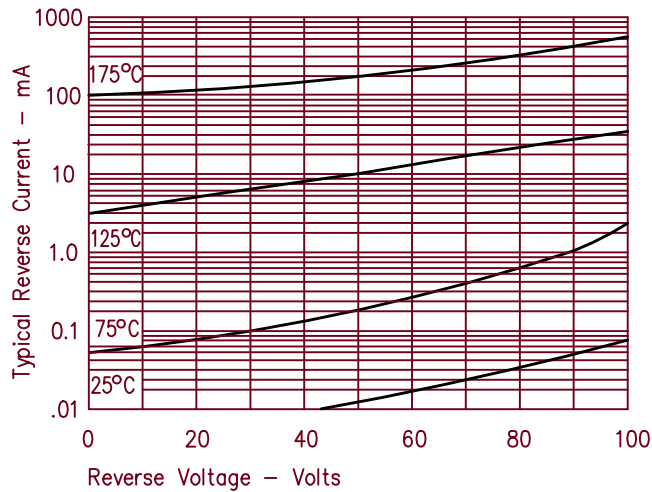
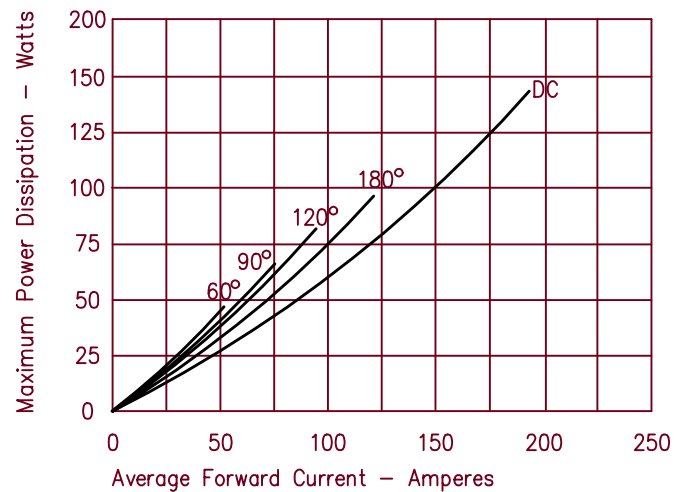


Figure 5  
Maximum Forward Power Dissipation





LittleDiode supplies new, hard to find or obsolete electronic components and semiconductors all over the world.

With over two million different components listed you are sure to find the part you need.

Feel free to visit us today at our online store:

[LittleDiode.com](http://LittleDiode.com)

Looking forward to providing you with the best possible service.