

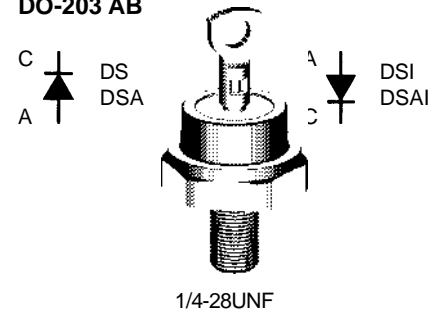
Rectifier Diode Avalanche Diode

$V_{RRM} = 800-1800 \text{ V}$
 $I_{F(RMS)} = 160 \text{ A}$
 $I_{F(AV)M} = 110 \text{ A}$

V_{RSM} V	$V_{(BR)min}$ ① V	V_{RRM} V	Anode on stud	Cathode on stud
900	-	800	DS75-08B	DSI75-08B
1300	-	1200	DS75-12B	DSI75-12B
1300	1300	1200	DSA75-12B	DSAI75-12B
1700	1760	1600	DSA75-16B	DSAI75-16B
1900	1950	1800	DSA75-18B	DSAI75-18B

① Only for Avalanche Diodes

DO-203 AB



A = Anode C = Cathode

Symbol	Test Conditions	Maximum Ratings	
$I_{F(RMS)}$	$T_{VJ} = T_{VJM}$	160	A
$I_{F(AV)M}$	$T_{case} = 100^{\circ}\text{C}; 180^{\circ}$ sine	110	A
P_{RSM}	DSA(I) types, $T_{VJ} = T_{VJM}, t_p = 10 \mu\text{s}$	20	kW
I_{FSM}	$T_{VJ} = 45^{\circ}\text{C}; V_R = 0$	t = 10 ms (50 Hz), sine	1400 A
		t = 8.3 ms (60 Hz), sine	1500 A
I^2t	$T_{VJ} = 45^{\circ}\text{C}; V_R = 0$	t = 10 ms (50 Hz), sine	9800 A ² s
		t = 8.3 ms (60 Hz), sine	9450 A ² s
T_{VJ}	$T_{VJ} = T_{VJM}; V_R = 0$	t = 10 ms (50 Hz), sine	7820 A ² s
		t = 8.3 ms (60 Hz), sine	7210 A ² s
T_{VJM}		-40...+180	°C
T_{stg}		180	°C
M_d	Mounting torque	2.4-4.5	Nm
		21-40	lb.in.
Weight		21	g

Features

- International standard package, JEDEC DO-203 AB (DO-5)
- Planar glassivated chips

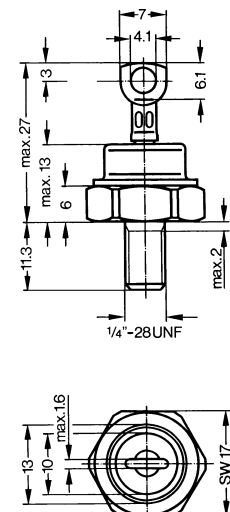
Applications

- High power rectifiers
- Field supply for DC motors
- Power supplies

Advantages

- Space and weight savings
- Simple mounting
- Improved temperature and power cycling
- Reduced protection circuits

Dimensions in mm (1 mm = 0.0394")



Symbol	Test Conditions	Characteristic Values	
I_R	$T_{VJ} = T_{VJM}; V_R = V_{RRM}$	≤ 6	mA
V_F	$I_F = 150 \text{ A}; T_{VJ} = 25^{\circ}\text{C}$	≤ 1.17	V
V_{T0}	For power-loss calculations only	0.75	V
r_T	$T_{VJ} = T_{VJM}$	2	mΩ
R_{thJC}	DC current	0.5	K/W
R_{thJH}	DC current	0.9	K/W
d_s	Creepage distance on surface	4.05	mm
d_A	Strike distance through air	3.9	mm
a	Max. allowable acceleration	100	m/s ²

Data according to IEC 60747
 IXYS reserves the right to change limits, test conditions and dimensions

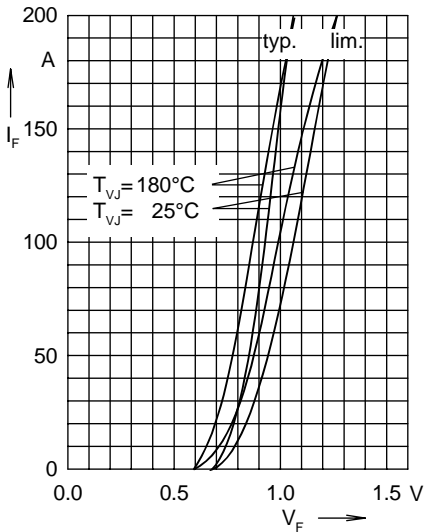


Fig. 1 Forward characteristics

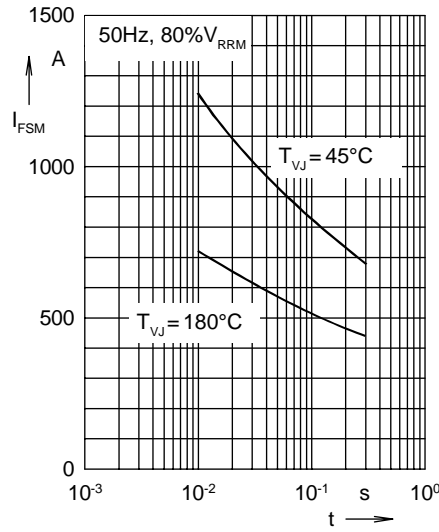


Fig. 2 Surge overload current
 I_{FSM} : crest value, t : duration

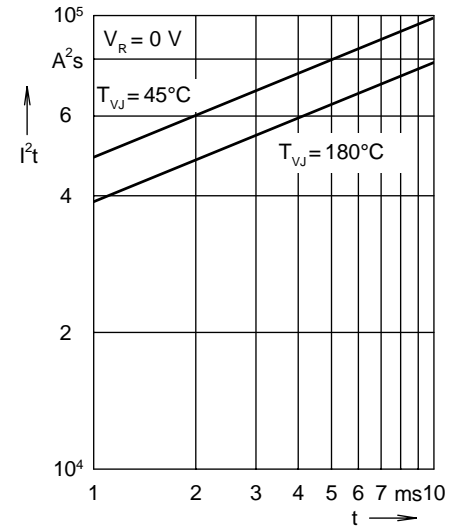


Fig. 3 I^2t versus time (1-10 ms)

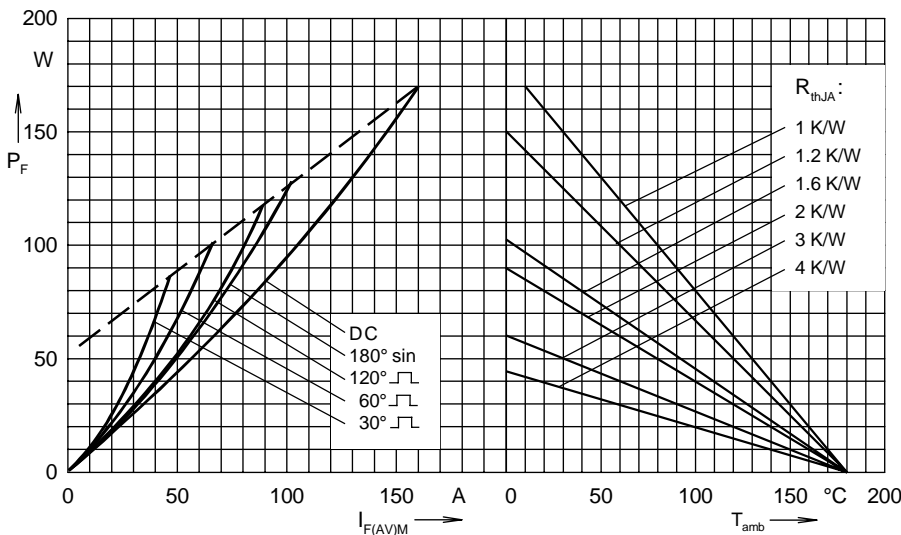


Fig. 4 Power dissipation versus forward current and ambient temperature

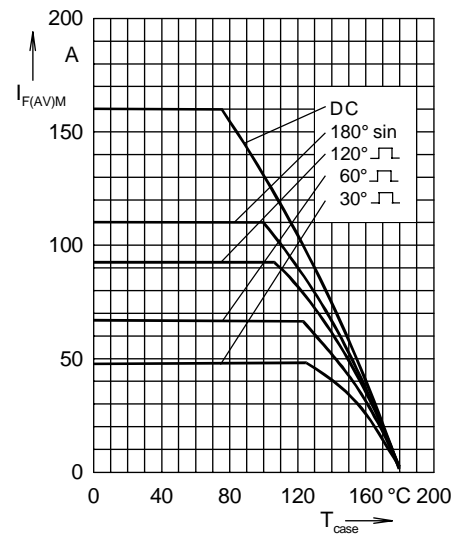


Fig. 5 Max. forward current at case temperature

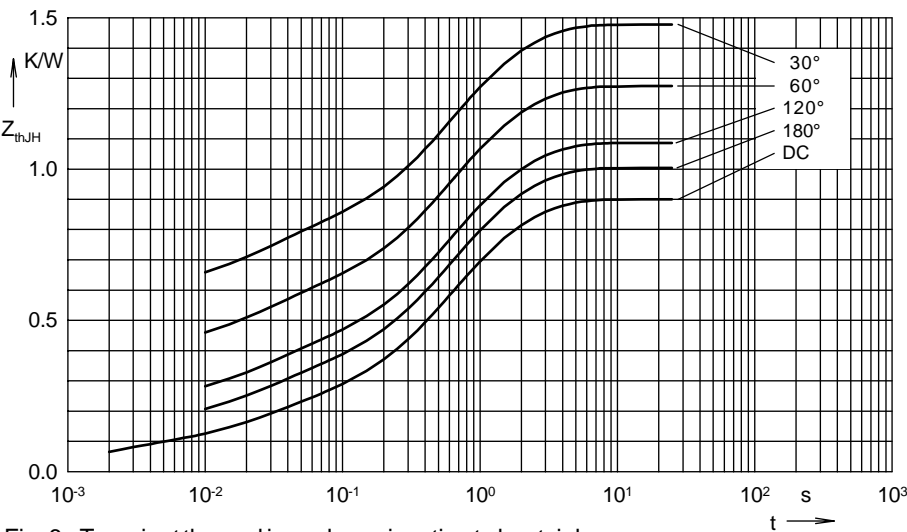


Fig. 6 Transient thermal impedance junction to heatsink

R_{thJH} for various conduction angles d :

d	R_{thJH} (K/W)
DC	0.900
180°	1.028
120°	1.085
60°	1.272
30°	1.476

Constants for Z_{thJH} calculation:

i	R_{thi} (K/W)	t_i (s)
1	0.0731	0.0015
2	0.1234	0.0237
3	0.4035	0.4838
4	0.3000	1.5



LittleDiode supplies new, hard to find or obsolete electronic components and semiconductors all over the world.

With over two million different components listed you are sure to find the part you need.

Feel free to visit us today at our online store:

LittleDiode.com

Looking forward to providing you with the best possible service.