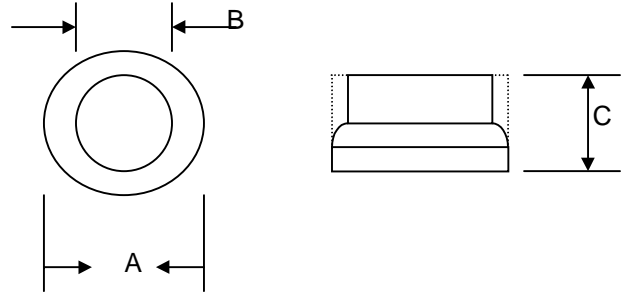


40A GLASS PASSIVATED AVALANCHE RECTIFIER CELL

Features

- Glass Passivated Die Construction
- High Power Capacity
- Avalanche Voltage 24 to 32 Volts
- High Surge Current Capability
- Die Size 220 mil HEX



Mechanical Data

- Case: Protected with Silicon Rubber
- Terminal: Slug, Cu with Ag Plated
- Polarity: Indicated by Large Slug on Cathode Side
- Mounting Position: Any

C2540		
Dim	Min	Max
A	7.23	7.30
B	6.53	6.58
C	2.15	2.25
All Dimensions in mm		

Maximum Ratings and Electrical Characteristics @ $T_A=25^\circ\text{C}$ unless otherwise specified

Single Phase, half wave, 60Hz, resistive or inductive load.
 For capacitive load, derate current by 20%.

Characteristic	Symbol	C2540	Unit
Peak Repetitive Reverse Voltage Working Peak Reverse Voltage DC Blocking Voltage	V_{RRM} V_{RWM} V_R	20	V
Average Rectified Output Current @ $T_A = 150^\circ\text{C}$	I_O	40	A
Breakdown Voltage Min. Breakdwon Voltage Max. @ $I_R = 100\text{mA}$	V_{BR}	24 32	V
Non-Repetitive Peak Forward Surge Current 8.3ms Single half sine-wave superimposed on rated load (JEDEC Method)	I_{FSM}	600	A
Peak Reverse Surge Current	I_{RSM}	150	A
Forward Voltage @ $I_F = 100\text{A}$	V_{FM}	1.05	V
Peak Reverse Current at Rated DC Blocking Voltage @ $T_C = 25^\circ\text{C}$	I_{RM}	200	nA
Typical Thermal Resistance Junction to Ambient	$R_{\theta JA}$	0.8	K/W
Operating and Storage Temperature Range	T_J, T_{STG}	-40 to +150	$^\circ\text{C}$

ORDERING INFORMATION

Product No.	Package Type	Shipping Quantity
C2540	7.23mm Cell	2000 Units/Box

Shipping quantity given is for minimum packing quantity only. For minimum order quantity, please consult the Sales Department.

Won-Top Electronics Co., Ltd (WTE) has checked all information carefully and believes it to be correct and accurate. However, WTE cannot assume any responsibility for inaccuracies. Furthermore, this information does not give the purchaser of semiconductor devices any license under patent rights to manufacturer. WTE reserves the right to change any or all information herein without further notice.

WARNING: DO NOT USE IN LIFE SUPPORT EQUIPMENT. WTE power semiconductor products are not authorized for use as critical components in life support devices or systems without the express written approval.

Won-Top Electronics Co., Ltd.

No. 44 Yu Kang North 3rd Road, Chine Chen Dist., Kaohsiung, Taiwan

Phone: 886-7-822-5408 or 886-7-822-5410

Fax: 886-7-822-5417

Email: sales@wontop.com

Internet: <http://www.wontop.com>

We power your everyday.



LittleDiode supplies new, hard to find or obsolete electronic components and semiconductors all over the world.

With over two million different components listed you are sure to find the part you need.

Feel free to visit us today at our online store:

LittleDiode.com

Looking forward to providing you with the best possible service.