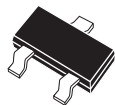


CMPT992
 CMPT992P
 CMPT992F
 CMPT992E

PNP SILICON
 LOW NOISE TRANSISTOR



SOT-23 CASE

CentralTM
Semiconductor Corp.

DESCRIPTION:

The CENTRAL SEMICONDUCTOR CMPT992 types are PNP silicon low noise transistors manufactured by the epitaxial planar process, epoxy molded in a surface mount package, designed for low noise amplifier applications where a high BV_{CEO} is required.

MARKING CODE: PLEASE SEE MARKING CODE TABLE ON FOLLOWING PAGE.

MAXIMUM RATINGS: ($T_A=25^\circ\text{C}$)

	SYMBOL		UNITS
Collector-Base Voltage	V_{CBO}	110	V
Collector-Emitter Voltage	V_{CEO}	110	V
Emitter-Base Voltage	V_{EBO}	5.0	V
Continuous Collector Current	I_C	50	mA
Power Dissipation	P_D	350	mW
Operating and Storage			
Junction Temperature	T_J, T_{stg}	-65 to +150	$^\circ\text{C}$
Thermal Resistance	θ_{JA}	357	$^\circ\text{C/W}$

ELECTRICAL CHARACTERISTICS: ($T_A=25^\circ\text{C}$ unless otherwise noted)

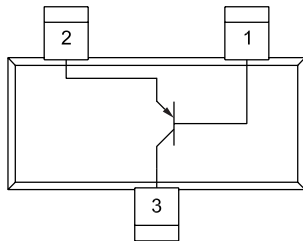
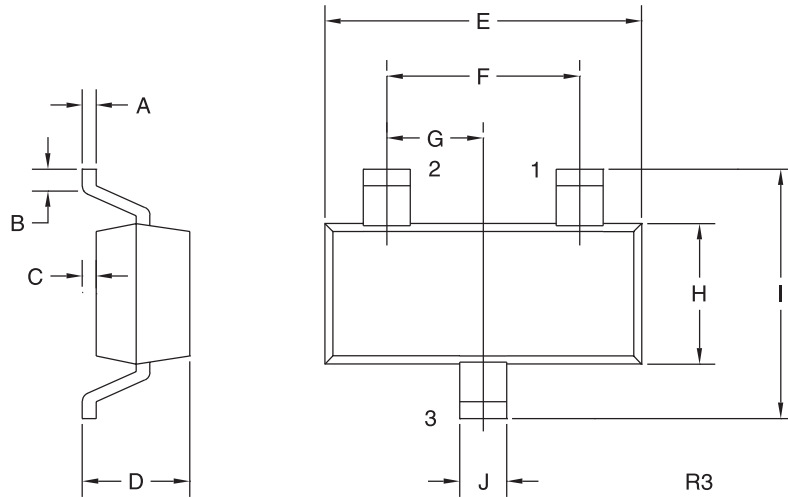
SYMBOL	TEST CONDITIONS	MIN	MAX	UNITS
I_{EBO}	$V_{EB}=5.0\text{V}$		30	nA
BV_{CBO}	$I_C=100\mu\text{A}$	110		V
BV_{CEO}	$I_C=1.0\text{mA}$	110		V
BV_{EBO}	$I_E=10\mu\text{A}$	5.0		V
$V_{CE(SAT)}$	$I_C=10\text{mA}, I_B=1.0\text{mA}$		0.30	V
$V_{BE(ON)}$	$V_{CE}=6.0\text{V}, I_C=1.0\text{mA}$	0.55	0.65	V
f_T	$V_{CE}=6.0\text{V}, I_C=1.0\text{mA}$	50		MHz
C_{ob}	$V_{CB}=30\text{V}, I_E=0, f=1.0\text{MHz}$		3.0	pF
NF	$V_{CE}=5.0\text{V}, I_C=100\mu\text{A}, R_S=10\text{k}\Omega$ $f=10\text{Hz to } 15.7\text{KHz}$		3.0	dB

		CMPT992		CMPT992P		CMPT992F		CMPT992E	
		MIN	MAX	MIN	MAX	MIN	MAX	MIN	MAX
h_{FE}	$V_{CE}=6.0\text{V}, I_C=100\mu\text{A}$	150	-	150	-	150	-	150	-
h_{FE}	$V_{CE}=6.0\text{V}, I_C=1.0\text{mA}$	200	800	200	400	300	600	400	800

R1 (13-April 2004)

PNP SILICON
LOW NOISE TRANSISTOR

SOT-23 CASE - MECHANICAL OUTLINE



LEAD CODE:
1) BASE
2) EMITTER
3) COLLECTOR

SYMBOL	INCHES		MILLIMETERS	
	MIN	MAX	MIN	MAX
A	0.003	0.007	0.08	0.18
B	0.006	-	0.15	-
C	-	0.005	-	0.13
D	0.035	0.043	0.89	1.09
E	0.110	0.120	2.80	3.05
F	0.075		1.90	
G	0.037		0.95	
H	0.047	0.055	1.19	1.40
I	0.083	0.098	2.10	2.49
J	0.014	0.020	0.35	0.50

SOT-23 (REV: R3)

DEVICE	MARKING CODE
CMPT992	C992
CMPT992P	C992P
CMPT992F	C992F
CMPT992E	C992E



LittleDiode supplies new, hard to find or obsolete electronic components and semiconductors all over the world.

With over two million different components listed you are sure to find the part you need.

Feel free to visit us today at our online store:

LittleDiode.com

Looking forward to providing you with the best possible service.