

CMUT2222A

ULTRAmi™ SURFACE MOUNT
NPN SILICON TRANSISTOR

ULTRAmi™



SOT-523 CASE

Central™
Semiconductor Corp.

DESCRIPTION:

The CENTRAL SEMICONDUCTOR CMUT2222A type is an NPN silicon transistor manufactured by the epitaxial planar process, epoxy molded in an ULTRAmi™ surface mount package, designed for small signal general purpose and switching applications. Marking Code is PC1.

MAXIMUM RATINGS: (T_A=25°C)

	<u>SYMBOL</u>		<u>UNITS</u>
Collector-Base Voltage	V _{CB0}	75	V
Collector-Emitter Voltage	V _{CEO}	40	V
Emitter-Base Voltage	V _{EBO}	6.0	V
Collector Current	I _C	600	mA
Power Dissipation	P _D	250	mW
Operating and Storage			
Junction Temperature	T _J , T _{stg}	-65 to +150	°C
Thermal Resistance	θ _{JA}	500	°C/W

ELECTRICAL CHARACTERISTICS: (T_A=25°C unless otherwise noted)

<u>SYMBOL</u>	<u>TEST CONDITIONS</u>	<u>MIN</u>	<u>MAX</u>	<u>UNITS</u>
I _{CBO}	V _{CB} =60V		10	nA
I _{CBO}	V _{CB} =60V, T _A =125°C		10	µA
I _{EBO}	V _{EB} =3.0V		10	nA
I _{CEV}	V _{CE} =60V, V _{EB} =3.0V		10	nA
BV _{CB0}	I _C =10µA	75		V
BV _{CEO}	I _C =10mA	40		V
BV _{EBO}	I _E =10µA	6.0		V
V _{CE(SAT)}	I _C =150mA, I _B =15mA		0.3	V
V _{CE(SAT)}	I _C =500mA, I _B =50mA		1.0	V
V _{BE(SAT)}	I _C =150mA, I _B =15mA	0.6	1.2	V
V _{BE(SAT)}	I _C =500mA, I _B =50mA		2.0	V
h _{FE}	V _{CE} =10V, I _C =0.1mA	35		
h _{FE}	V _{CE} =10V, I _C =1.0mA	50		
h _{FE}	V _{CE} =10V, I _C =10mA	75		
h _{FE}	V _{CE} =10V, I _C =150mA	100	300	
h _{FE}	V _{CE} =1.0V, I _C =150mA	50		
h _{FE}	V _{CE} =10V, I _C =500mA	40		

ELECTRICAL CHARACTERISTICS: Continued

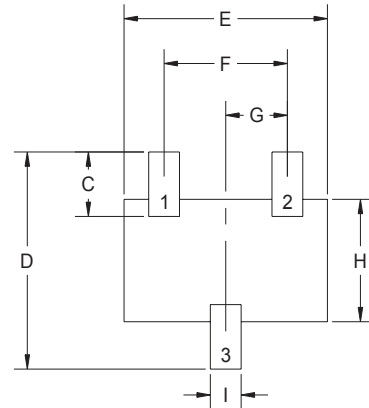
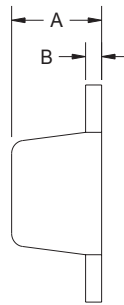
<u>SYMBOL</u>	<u>TEST CONDITIONS</u>	<u>MIN</u>	<u>MAX</u>	<u>UNITS</u>
f_T	$V_{CE}=20V, I_C=20mA, f=100MHz$	300		MHz
C_{ob}	$V_{CB}=10V, I_E=0, f=1.0MHz$		8.0	pF
C_{ib}	$V_{EB}=0.5V, I_C=0, f=1.0MHz$		25	pF
h_{ie}	$V_{CE}=10V, I_C=1.0mA, f=1.0kHz$	2.0	8.0	k Ω
h_{ie}	$V_{CE}=10V, I_C=10mA, f=1.0kHz$	0.25	1.25	k Ω
h_{re}	$V_{CE}=10V, I_C=1.0mA, f=1.0kHz$		8.0	$\times 10^{-4}$
h_{re}	$V_{CE}=10V, I_C=10mA, f=1.0kHz$		4.0	$\times 10^{-4}$
h_{fe}	$V_{CE}=10V, I_C=1.0mA, f=1.0kHz$	50	300	
h_{fe}	$V_{CE}=10V, I_C=10mA, f=1.0kHz$	75	375	
h_{oe}	$V_{CE}=10V, I_C=1.0mA, f=1.0kHz$	5.0	35	μ mhos
h_{oe}	$V_{CE}=10V, I_C=10mA, f=1.0kHz$	25	200	μ mhos
$rb'C_C$	$V_{CB}=10V, I_E=20mA, f=31.8MHz$		150	ps
NF	$V_{CE}=10V, I_C=100\mu A, R_S=1.0k\Omega, f=1.0kHz$		4.0	dB
t_d	$V_{CC}=30V, V_{BE}=0.5V, I_C=150mA, I_{B1}=15mA$		10	ns
t_r	$V_{CC}=30V, V_{BE}=0.5V, I_C=150mA, I_{B1}=15mA$		25	ns
t_s	$V_{CC}=30V, I_C=150mA, I_{B1}=I_{B2}=15mA$		225	ns
t_f	$V_{CC}=30V, I_C=150mA, I_{B1}=I_{B2}=15mA$		60	ns

MECHANICAL OUTLINE - SOT-523

BOTTOM VIEW

DIMENSIONS				
SYMBOL	INCHES		MILLIMETERS	
	MIN	MAX	MIN	MAX
A	0.025	0.029	0.63	0.73
B	0.004	0.005	0.10	0.13
C	0.015	0.019	0.39	0.49
D	0.061	0.065	1.55	1.65
E	0.061	0.065	1.55	1.65
F	0.039	0.040	0.98	1.02
G	0.019	0.020	0.48	0.52
H	0.033	0.037	0.83	0.93
I	0.009	0.010	0.23	0.25

SOT-523 (REV: R1)



R1

LEAD CODE:

- 1) Base
- 2) Emitter
- 3) Collector

R1 (2 -October 2001)



LittleDiode supplies new, hard to find or obsolete electronic components and semiconductors all over the world.

With over two million different components listed you are sure to find the part you need.

Feel free to visit us today at our online store:

LittleDiode.com

Looking forward to providing you with the best possible service.