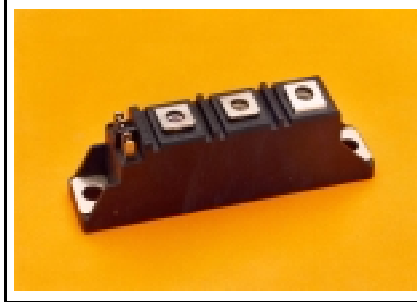
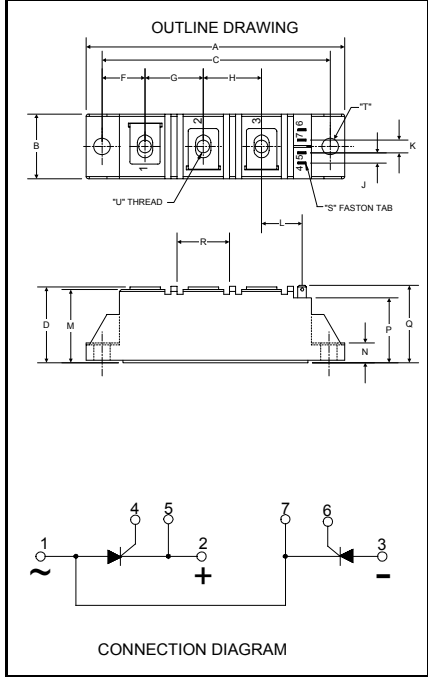


Powerex, Inc., Hillis Street, Youngwood, Pennsylvania 15697 (724) 925-7272

**POW-R-BLOK™**  
**Dual SCR Isolated Module**  
**60 Amperes / Up to 1600 Volts**



**CD43\_60**  
**Dual SCR Isolated**  
**POW-R-BLOK™ Module**  
 60 Amperes / Up to 1600 Volts

**Description:**

Powerex Dual SCR Modules are designed for use in applications requiring phase control and isolated packaging. The modules are isolated for easy mounting with other components on a common heatsink. *POW-R-BLOK™* has been tested and recognized by the Underwriters Laboratories.

**Features:**

- Electrically Isolated Heatsinking
- DBC Alumina (Al<sub>2</sub>O<sub>3</sub>) Insulator
- Glass Passivated Chips
- DBC Alumina (Al<sub>2</sub>O<sub>3</sub>) Baseplate
- Low Thermal Impedance for Improved Current Capability
- UL Recognized (E78240)

**Benefits:**

- No Additional Insulation Components Required
- Easy Installation
- No Clamping Components Required
- Reduce Engineering Time

**Applications:**

- Bridge Circuits
- AC & DC Motor Drives
- Battery Supplies
- Power Supplies
- Large IGBT Circuit Front Ends
- Lighting Control
- Heat & Temperature Control
- Welders

**CD43 Outline Dimensions**

Dimension	Inches	Millimeters
A	3.62	92
B	0.81	20.5
C	3.15	80
D	1.18	30
F	0.59	15
G	0.79	20
H	0.79	20
J	0.16	4
K	0.23	5.8
L	0.61	15.5
M	1.14	29
N	0.24	6.1
P	0.94	24
Q	1.18	30
R	0.71	18
S	0.11 x .03	2.8 x 0.8
T	0.25	6.3
U	M5	M5

Note: Dimensions are for reference only

**Ordering Information:**

Select the complete eight digit module part number from the table below. Example: CD431660 is a 1600Volt, 60 Ampere Dual SCR Isolated *POW-R-BLOK™* Module

Type	Voltage Volts (x100)	Current Amperes (x 1)
CD43	08	60
	12	
	16	

**Absolute Maximum Ratings**

Characteristics	Conditions	Symbol	Units
Repetitive Peak Forward and Reverse Blocking Voltage		$V_{DRM}$ & $V_{RRM}$	up to 1600 V
Non-Repetitive Peak Reverse Blocking Voltage ( $t < 5$ msec)		$V_{RSM}$	$V_{RRM} + 100$ V
RMS Forward Current	180° Conduction, $T_C=95^\circ\text{C}$	$I_{T(RMS)}$	95 A
	180° Conduction, $T_C=95^\circ\text{C}$ (AC Switch)	$I_{T(RMS)}$	135 A
Average Forward Current	180° Conduction, $T_C=95^\circ\text{C}$	$I_{T(AV)}$	60 A
Peak One Cycle Surge Current, Non-Repetitive	60 Hz, 100% $V_{RRM}$ reapplied, $T_J=125^\circ\text{C}$	$I_{TSM}$	1,470 A
	60 Hz, No $V_{RRM}$ reapplied, $T_J=125^\circ\text{C}$	$I_{TSM}$	1,740 A
	60 Hz, No $V_{RRM}$ reapplied, $T_J=25^\circ\text{C}$	$I_{TSM}$	1,940 A
	50 Hz, 100% $V_{RRM}$ reapplied, $T_J=125^\circ\text{C}$	$I_{TSM}$	1,400 A
	50 Hz, No $V_{RRM}$ reapplied, $T_J=125^\circ\text{C}$	$I_{TSM}$	1,665 A
	50 Hz, No $V_{RRM}$ reapplied, $T_J=25^\circ\text{C}$	$I_{TSM}$	1,850 A
Peak Three Cycle Surge Current, Non-Repetitive	60 Hz, 100% $V_{RRM}$ reapplied, $T_J=125^\circ\text{C}$	$I_{TSM}$	1,120 A
	50 Hz, 100% $V_{RRM}$ reapplied, $T_J=125^\circ\text{C}$	$I_{TSM}$	1,080 A
Peak Ten Cycle Surge Current, Non-Repetitive	60 Hz, 100% $V_{RRM}$ reapplied, $T_J=125^\circ\text{C}$	$I_{TSM}$	900 A
	50 Hz, 100% $V_{RRM}$ reapplied, $T_J=125^\circ\text{C}$	$I_{TSM}$	870 A
$I^2t$ for Fusing for One Cycle, 8.3 milliseconds	8.3 ms, 100% $V_{RRM}$ reapplied, $T_J=125^\circ\text{C}$	$I^2t$	8,960 $\text{A}^2\text{sec}$
	8.3 ms, No $V_{RRM}$ reapplied, $T_J=125^\circ\text{C}$	$I^2t$	12,560 $\text{A}^2\text{sec}$
	8.3 ms, No $V_{RRM}$ reapplied, $T_J=25^\circ\text{C}$	$I^2t$	15,600 $\text{A}^2\text{sec}$
	10 ms, 100% $V_{RRM}$ reapplied, $T_J=125^\circ\text{C}$	$I^2t$	9,800 $\text{A}^2\text{sec}$
	10 ms, No $V_{RRM}$ reapplied, $T_J=125^\circ\text{C}$	$I^2t$	13,860 $\text{A}^2\text{sec}$
	10 ms, No $V_{RRM}$ reapplied, $T_J=25^\circ\text{C}$	$I^2t$	17,110 $\text{A}^2\text{sec}$
Maximum Rate-of-Rise of On-State Current, (Non-Repetitive)	$T_J=25^\circ\text{C}$ , $I_G=0.5$ A, $V_D=0.67 V_{DRM}$ (Rated), $I_{TM}=3000$ A, $T_r < 0.5\mu\text{s}$ , $t_p > 6\mu\text{s}$	$di/dt$	150 A/ $\mu\text{s}$
Peak Gate Power Dissipation	$T_p < 5$ ms, $T_J = 125^\circ\text{C}$	$P_{GM}$	12 W
Average Gate Power Dissipation	$F = 50$ Hz, $T_J = 125^\circ\text{C}$	$P_{G(AV)}$	3 W
Peak Forward Gate Current	$T_p < 5$ ms, $T_J = 125^\circ\text{C}$	$I_{GFM}$	3 A
Peak Reverse Gate Voltage	$T_p < 5$ ms, $T_J = 125^\circ\text{C}$	$V_{GRM}$	10 V
Operating Temperature		$T_J$	-40 to +125 °C
Storage Temperature		$T_{stg}$	-40 to +125 °C
Max. Mounting Torque, M5 Mounting Screw on Terminals			25 in.-Lb.
			3 Nm
Max. Mounting Torque, Module to Heatsink			44 in.-Lb.
			5 Nm
Module Weight, Typical			83 g
			3 oz.
V Isolation @ 25C	50 – 60 Hz, 1 minute	$V_{rms}$	2500 V
Circuit to base, all terminals shorted together	50 – 60 Hz, 1 second	$V_{rms}$	3500 V

**Electrical Characteristics, T<sub>J</sub>=25°C unless otherwise specified**

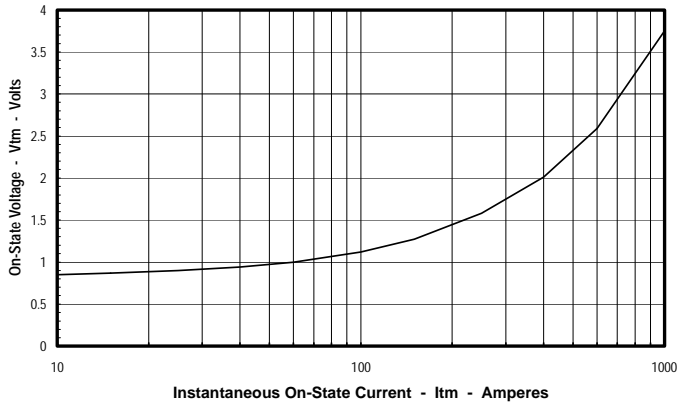
Characteristics	Symbol	Test Conditions	Min.	Max.	Units
Repetitive Peak Forward Leakage Current	I <sub>DRM</sub>	Up to 1600V, T <sub>J</sub> =125°C		15	mA
Repetitive Peak Reverse Leakage Current	I <sub>RRM</sub>	Up to 1600V, T <sub>J</sub> =125°C		15	mA
Peak On-State Voltage	V <sub>TM</sub> / V <sub>FM</sub>	I <sub>TM</sub> / I <sub>FM</sub> =235A		1.59	V
Threshold Voltage, Low-level	V <sub>(TO)1</sub>	T <sub>J</sub> = 125°C, I = 16.7% x πI <sub>T(AV)</sub> to πI <sub>T(AV)</sub>		0.82	V
Slope Resistance, Low-level	r <sub>T1</sub>			3.00	mΩ
Threshold Voltage, High-level	V <sub>(TO)2</sub>	T <sub>J</sub> = 125°C, I = πI <sub>T(AV)</sub> to I <sub>TSM</sub>		0.85	V
Slope Resistance, High-level	r <sub>T2</sub>			2.90	mΩ
V <sub>TM</sub> Coefficients, Full Range		T <sub>J</sub> = 125°C, I = 15% x I <sub>T(AV)</sub> to I <sub>TSM</sub>	A =	0.8127	
			B =	5.23E-03	
		V <sub>TM</sub> = A + B Ln I + C I + D Sqrt I	C =	2.90E-03	
			D =	-9.17E-05	
Minimum dV/dt	dV/dt	Linear to 2/3 V <sub>DRM</sub> T <sub>J</sub> =125°C, Gate Open Circuit	500		V/μs
Turn-Off Time (Typical)	t <sub>off</sub>	T <sub>J</sub> = 25°C, I <sub>T</sub> = 2A V <sub>r</sub> = 50V, -dI/dt=10 A/μs Re-Applied dV/dt = 200 V/μs, Linear to 900 V	40 - 100	(Typical)	μs
Gate Trigger Current	I <sub>GT</sub>	T <sub>J</sub> = -40°C, V <sub>D</sub> =6V, Resistive Load T <sub>J</sub> = 25°C, V <sub>D</sub> =6V, Resistive Load T <sub>J</sub> =125°C, V <sub>D</sub> =6V, Resistive Load		270 150 80	mA mA mA
Gate Trigger Voltage	V <sub>GT</sub>	T <sub>J</sub> = -40°C, V <sub>D</sub> =6V, Resistive Load T <sub>J</sub> = 25°C, V <sub>D</sub> =6V, Resistive Load T <sub>J</sub> =125°C, V <sub>D</sub> =6V, Resistive Load		4.0 2.5 1.7	Volts Volts Volts
Non-Triggering Gate Voltage	V <sub>GDM</sub>	T <sub>J</sub> =125°C, V <sub>D</sub> =V <sub>DRM</sub>		0.25	Volts
Non-Triggering Gate Current	I <sub>GDM</sub>	T <sub>J</sub> =125°C, V <sub>D</sub> =V <sub>DRM</sub>		6	mA
Holding Current	I <sub>H</sub>	V <sub>D</sub> =6V, Resistive Load, Gate Open		200	mA
Latching Current	I <sub>L</sub>	V <sub>D</sub> =6V, Resistive Load		400	mA

**Thermal Characteristics**

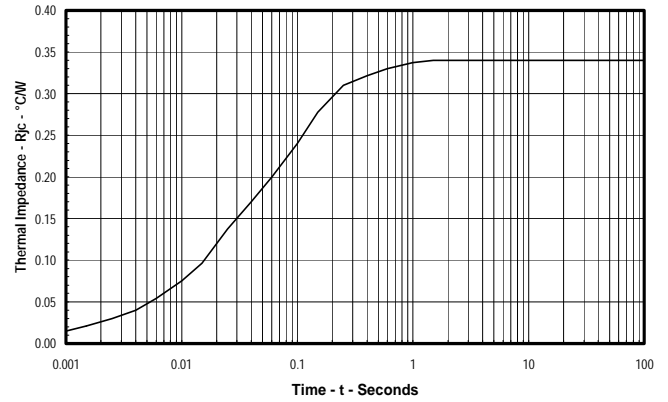
Characteristics	Symbol		Max.	Units
Thermal Resistance, Junction to Case DC Operation	R <sub>ΘJ-C</sub>	Per Module, both conducting Per Junction, both conducting	0.165 0.330	°C/W °C/W
Thermal Impedance Coefficients	Z <sub>ΘJ-C</sub>	Z <sub>ΘJ-C</sub> = K <sub>1</sub> (1-exp(-t/τ <sub>1</sub> )) + K <sub>2</sub> (1-exp(-t/τ <sub>2</sub> )) + K <sub>3</sub> (1-exp(-t/τ <sub>3</sub> )) + K <sub>4</sub> (1-exp(-t/τ <sub>4</sub> ))	K <sub>1</sub> = 2.68 E-3 K <sub>2</sub> = 9.52 E-3 K <sub>3</sub> = 1.26 E-1 K <sub>4</sub> = 2.01 E-1	τ <sub>1</sub> = 3.10 E-5 τ <sub>2</sub> = 1.07 E-3 τ <sub>3</sub> = 2.02 E-2 τ <sub>4</sub> = 1.39 E-1
Thermal Resistance, Case to Sink Lubricated	R <sub>ΘC-S</sub>	Per Module	0.1	°C/W

## POW-R-BLOK™ Dual SCR Isolated Module 60 Amperes / Up to 1600 Volts

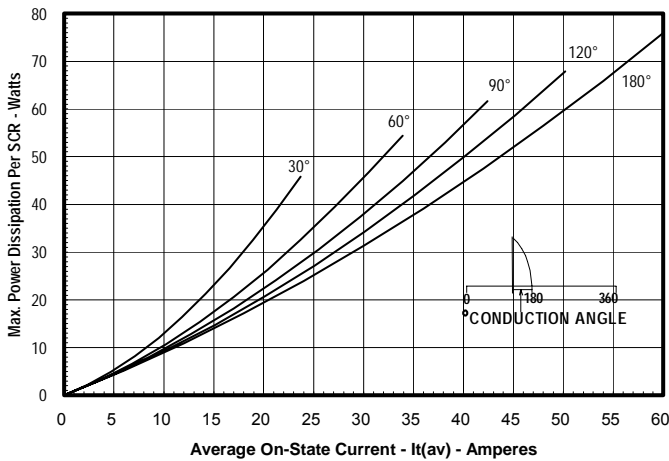
**Maximum On-State Forward Voltage Drop**  
( $T_j = 125^\circ\text{C}$ )



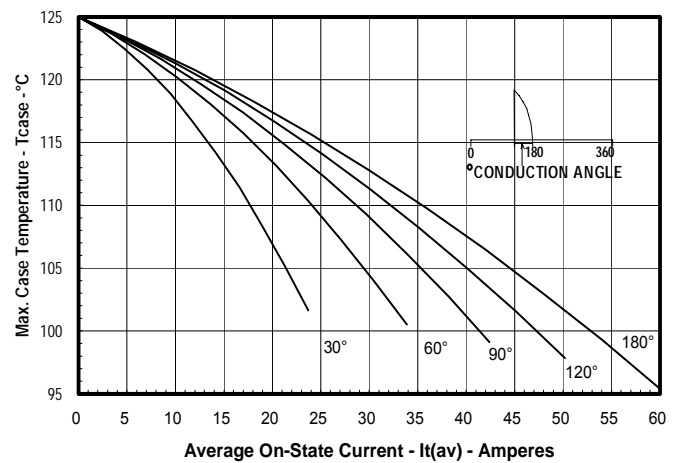
**Maximum Transient Thermal Impedance**  
(Junction to Case)



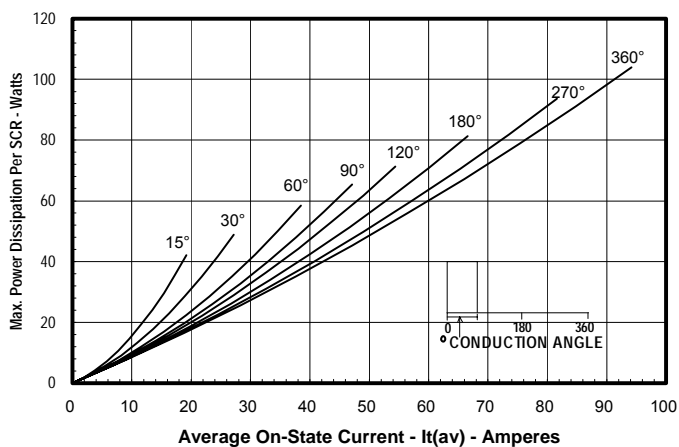
**Maximum On-State Power Dissipation**  
(Sinusoidal Waveform)



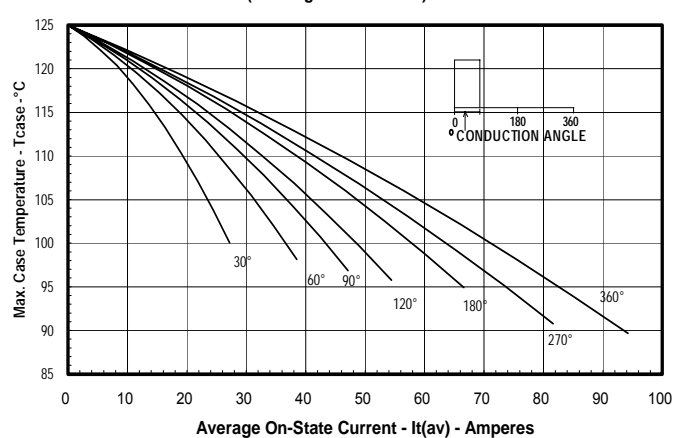
**Maximum Allowable Case Temperature**  
(Sinusoidal Waveform)



**Maximum On-State Power Dissipation**  
(Rectangular Waveform)



**Maximum Allowable Case Temperature**  
(Rectangular Waveform)





LittleDiode supplies new, hard to find or obsolete electronic components and semiconductors all over the world.

With over two million different components listed you are sure to find the part you need.

Feel free to visit us today at our online store:

[LittleDiode.com](http://LittleDiode.com)

Looking forward to providing you with the best possible service.