

FDPC4044

Common Drain N-Channel PowerTrench® MOSFET

30 V, 27 A, 4.3 mΩ

Features

- Max $r_{S1S2(on)}$ = 4.3 mΩ at $V_{GS} = 10\text{ V}$, $I_{S1S2} = 27\text{ A}$
- Max $r_{S1S2(on)}$ = 6.4 mΩ at $V_{GS} = 4.5\text{ V}$, $I_{S1S2} = 23\text{ A}$
- Package size/height: 3.3 x 3.3 x 0.8 mm
- Low inductance packaging shortens rise/fall times, resulting in lower switching losses
- MOSFET integration enables optimum layout for lower circuit inductance and reduced switch node ringing
- RoHS Compliant

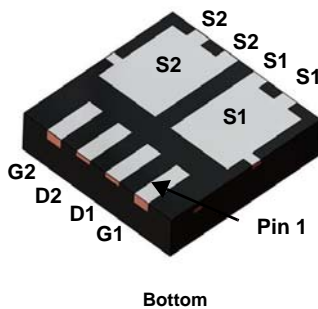


General Description

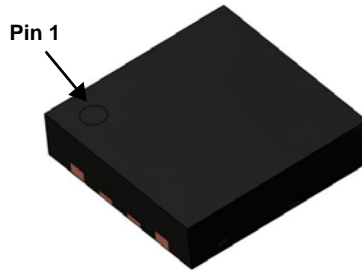
This device is designed specifically as a single package solution for Li-Ion battery pack protection circuit and other ultra-portable applications. It features two common drain N-channel MOSFETs, which enables bidirectional current flow. FDPC4044 combines Fairchild's advanced PowerTrench® process with state of the art packaging process to minimize the on-state resistance.

Applications

- Battery management
- Load switch
- Battery protection

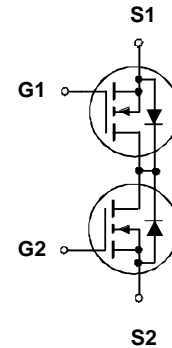


Bottom



Top

Power Clip 33



MOSFET Maximum Ratings $T_A = 25\text{ °C}$ unless otherwise noted

| Symbol | Parameter | Conditions | Rated Value | Units |
|----------------|--|----------------------------------|-------------|-------|
| V_{S1S2} | Source1 to Source2 Voltage | | 30 | V |
| V_{GS} | Gate to Source Voltage | (Note 3) | ±20 | V |
| I_{S1S2} | Source1 to Source2 Current | -Continuous $T_A = 25\text{ °C}$ | 27 | A |
| | | -Pulsed | 120 | |
| P_D | Power Dissipation | $T_A = 25\text{ °C}$ | 2.7 | W |
| | | $T_A = 25\text{ °C}$ | 1 | |
| T_J, T_{STG} | Operating and Storage Junction Temperature Range | | -55 to +150 | °C |

Thermal Characteristics

| | | | | |
|-----------------|---|-----------|-----|------|
| $R_{\theta JA}$ | Thermal Resistance, Junction to Ambient | (Note 1a) | 47 | °C/W |
| $R_{\theta JA}$ | Thermal Resistance, Junction to Ambient | (Note 1b) | 127 | |

Package Marking and Ordering Information

| Device Marking | Device | Package | Reel Size | Tape Width | Quantity |
|----------------|----------|---------------|-----------|------------|------------|
| 40CF | FDPC4044 | Power Clip 33 | 13 " | 12 mm | 3000 units |

Electrical Characteristics $T_J = 25\text{ }^\circ\text{C}$ unless otherwise noted

| Symbol | Parameter | Test Conditions | Min | Typ | Max | Units |
|--------|-----------|-----------------|-----|-----|-----|-------|
|--------|-----------|-----------------|-----|-----|-----|-------|

Off Characteristics

| | | | | | | |
|------------|--|---|--|--|-----|---------------|
| I_{S1S2} | Zero Gate Voltage Source1 to Source2 Current | $V_{S1S2} = 24\text{ V}, V_{GS} = 0\text{ V}$ | | | 1 | μA |
| I_{GSS} | Gate to Source Leakage Current | $V_{GS} = 20\text{ V}, V_{S1S2} = 0\text{ V}$ | | | 100 | nA |

On Characteristics

| | | | | | | |
|----------------|---|---|-----|-----|-----|------------|
| $V_{GS(th)}$ | Gate to Source Threshold Voltage | $V_{GS} = V_{S1S2}, I_{S1S2} = 250\text{ }\mu\text{A}$ | 1.2 | 1.5 | 3 | V |
| $r_{S1S2(on)}$ | Static Source1 to Source2 On Resistance | $V_{GS} = 10\text{ V}, I_{S1S2} = 27\text{ A}$ | | 3.2 | 4.3 | m Ω |
| | | $V_{GS} = 4.5\text{ V}, I_{S1S2} = 23\text{ A}$ | | 4.6 | 6.4 | |
| | | $V_{GS} = 10\text{ V}, I_{S1S2} = 27\text{ A}, T_J = 125\text{ }^\circ\text{C}$ | | 4.5 | 7 | |
| g_{FS} | Forward Transconductance | $V_{S1S2} = 10\text{ V}, I_{S1S2} = 27\text{ A}$ | | 150 | | S |

Dynamic Characteristics

| | | | | | | |
|------------|------------------------------|---|--|------|------|----|
| C_{iss} | Input Capacitance | $V_{S1S2} = 15\text{ V}, V_{GS} = 0\text{ V}, f = 1\text{ MHz}$ | | 2295 | 3215 | pF |
| C_{oss} | Output Capacitance | | | 627 | 880 | pF |
| C_{riss} | Reverse Transfer Capacitance | | | 66 | 95 | pF |

Switching Characteristics

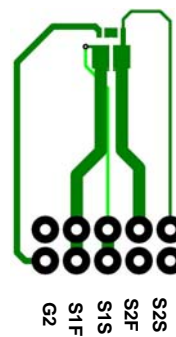
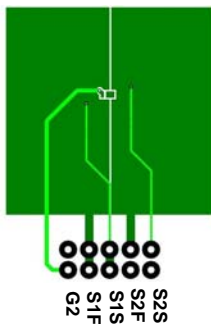
| | | | | | | |
|--------------|---------------------------------|---|--|-----|----|----|
| $t_{d(on)}$ | Turn-On Delay Time | $V_{S1S2} = 15\text{ V}, I_{S1S2} = 27\text{ A}, V_{GS} = 10\text{ V}, R_{GEN} = 6\text{ }\Omega$ | | 8.5 | 17 | ns |
| t_r | Rise Time | | | 4.8 | 10 | ns |
| $t_{d(off)}$ | Turn-Off Delay Time | | | 32 | 52 | ns |
| t_f | Fall Time | | | 5.2 | 10 | ns |
| Q_g | Total Gate Charge | $V_{S1S2} = 15\text{ V}, I_{S1S2} = 27\text{ A}, V_{G1S1} = 10\text{ V}, V_{G2S2} = 0\text{ V}$ | | 35 | 49 | nC |
| Q_{gs} | Gate to Source1 Gate Charge | | | 5.7 | | nC |
| Q_{gd} | Gate to Source2 "Miller" Charge | | | 4.7 | | nC |

Source1 to Source2 Diode Characteristics

| | | | | | |
|-----------|---|--|-----|-----|---|
| I_{fss} | Maximum Continuous Source1 to Source2 Diode Forward Current | | | 1 | A |
| V_{fss} | Source1 to Source2 Diode Forward Voltage | $V_{G1S1} = 0\text{ V}, V_{G2S2} = 4.5\text{ V}, I_{fss} = 27\text{ A}$ (Note 2) | 0.8 | 1.2 | V |

Notes:

- $R_{\theta JA}$ is determined with the device mounted on a 1 in² pad 2 oz copper pad on a 1.5 x 1.5 in. board of FR-4 material. $R_{\theta JC}$ is guaranteed by design while $R_{\theta CA}$ is determined by the user's board design.



- Pulse Test: Pulse Width < 300 μs , Duty cycle < 2.0%.

- As an N-ch device, the negative V_{gs} rating is for low duty cycle pulse occurrence only. No continuous rating is implied.

Typical Characteristics $T_J = 25\text{ }^\circ\text{C}$ unless otherwise noted

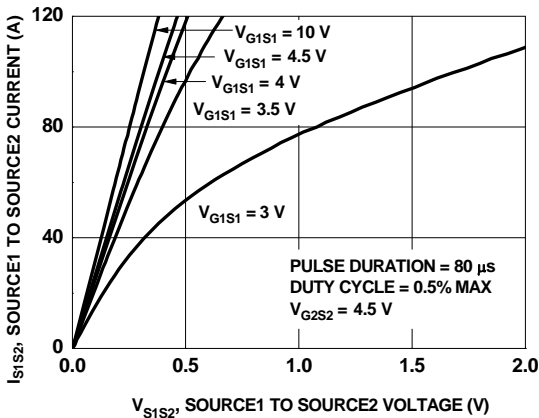


Figure 1. On-Region Characteristics

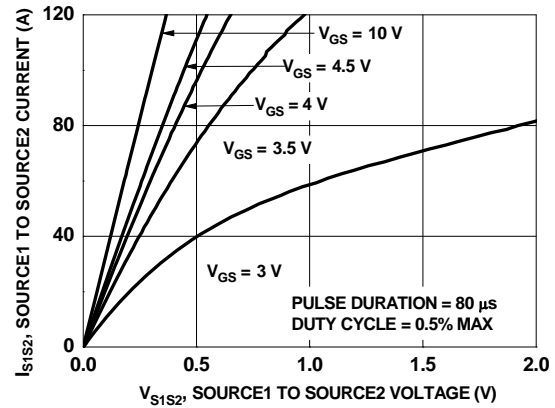


Figure 2. On-Region Characteristics

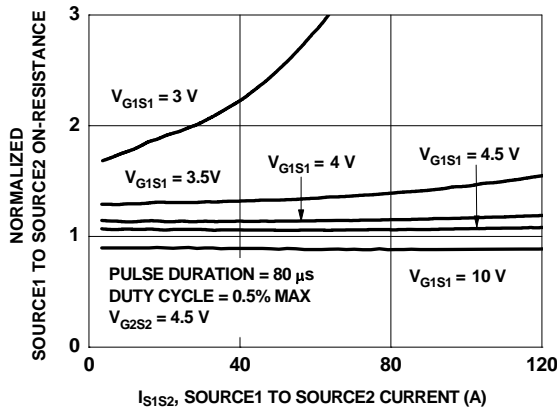


Figure 3. Normalized On-Resistance vs Source1 to Source2 Current and Gate Voltage

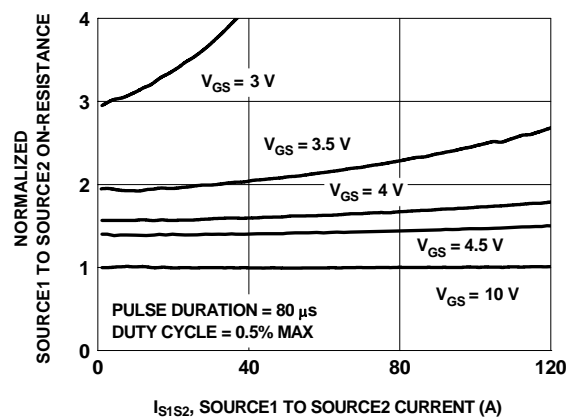


Figure 4. Normalized On-Resistance vs Source1 to Source2 Current and Gate Voltage

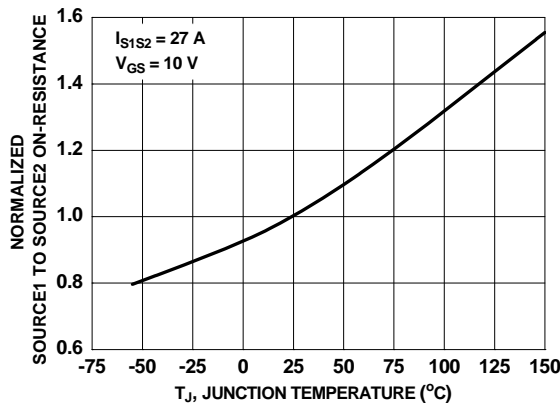


Figure 5. Normalized On-Resistance vs Junction Temperature

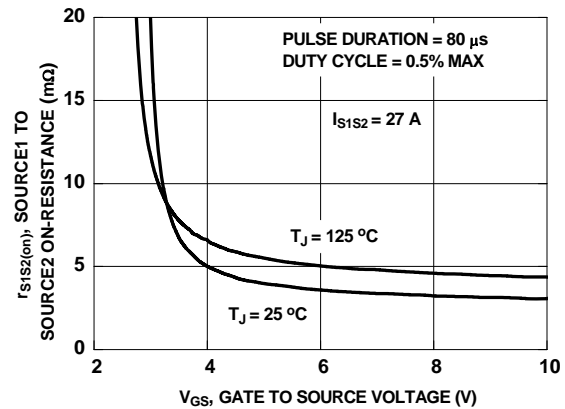


Figure 6. On-Resistance vs Gate to Source Voltage

Typical Characteristics $T_J = 25\text{ }^\circ\text{C}$ unless otherwise noted

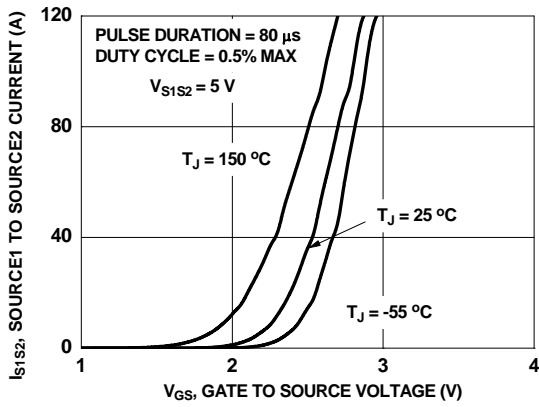


Figure 7. Transfer Characteristics

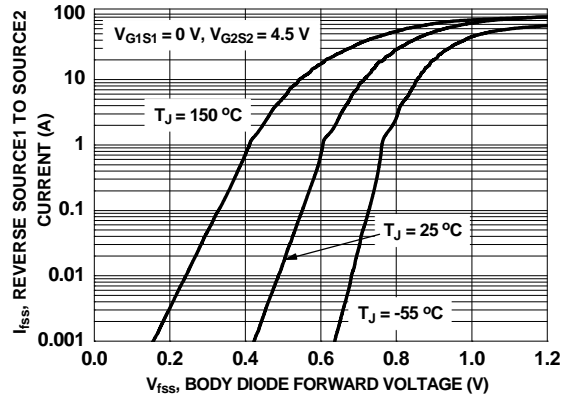


Figure 8. Source1 to Source2 Diode Forward Voltage vs Source Current

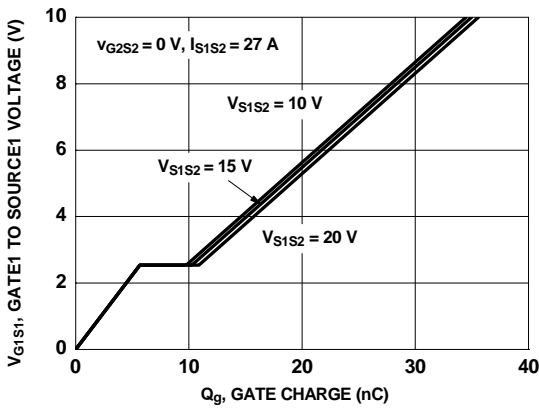


Figure 9. Gate Charge Characteristics

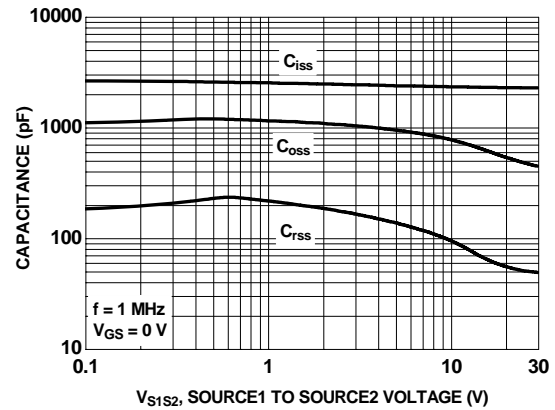


Figure 10. Capacitance vs Source1 to Source2 Voltage

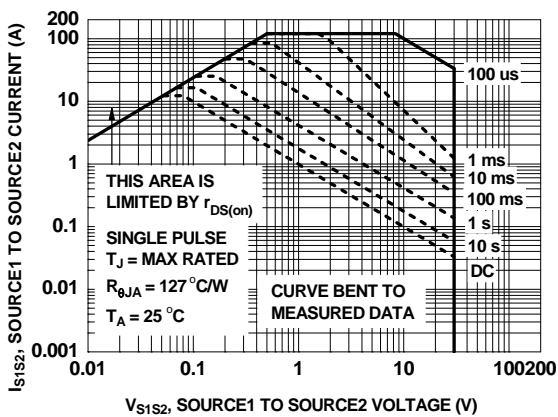


Figure 11. Forward Bias Safe Operating Area

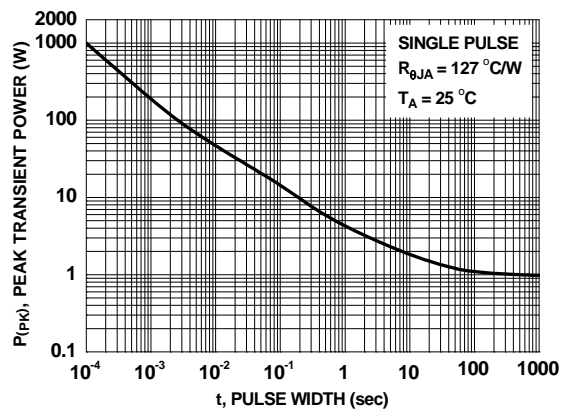


Figure 12. Single Pulse Maximum Power Dissipation

Typical Characteristics $T_J = 25\text{ }^\circ\text{C}$ unless otherwise noted

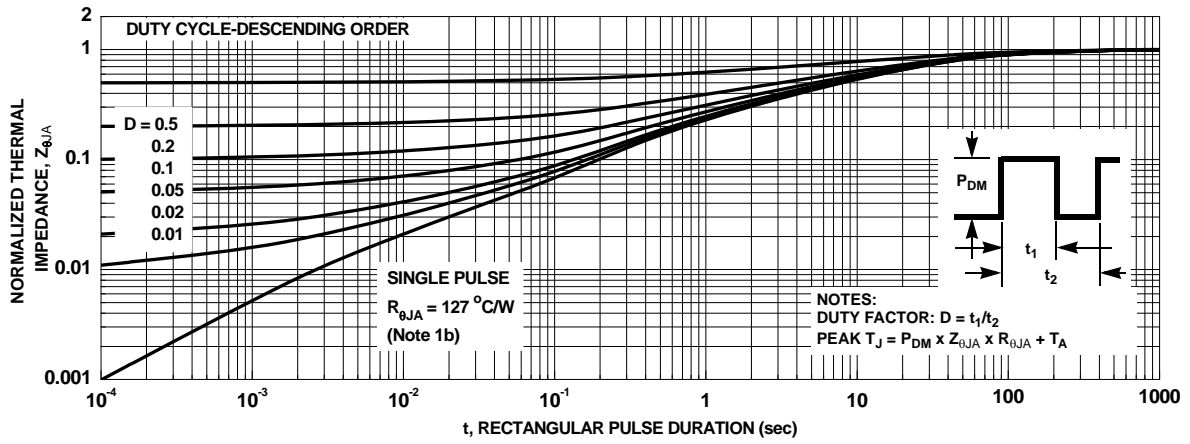
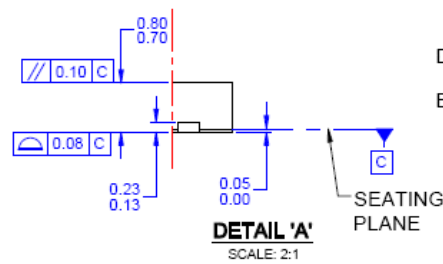
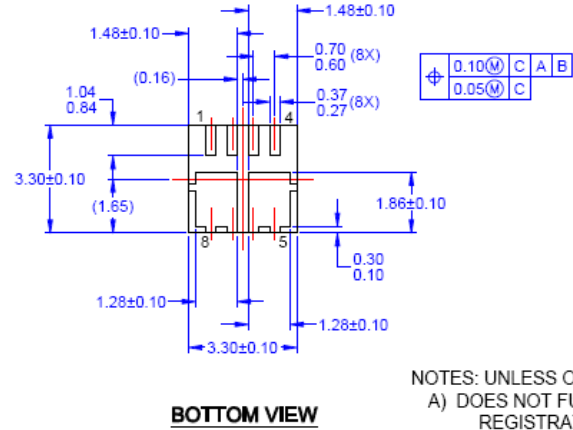
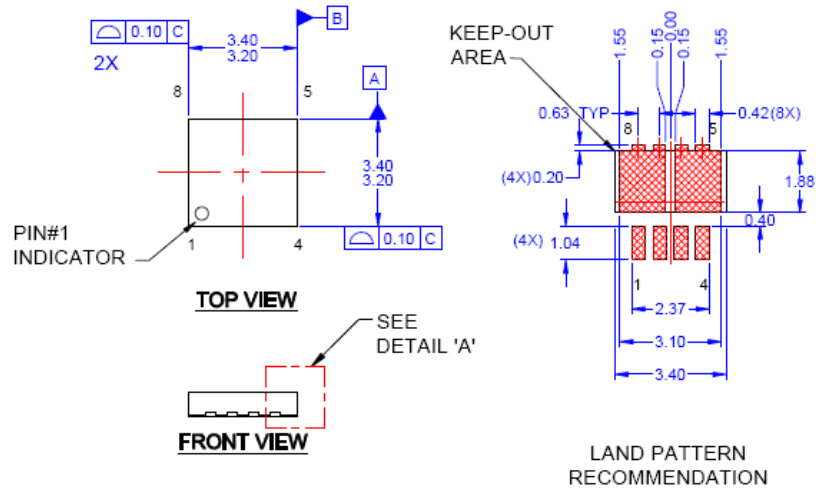


Figure 13. Junction-to-Ambient Transient Thermal Response Curve

Dimensional Outline and Pad Layout





- NOTES: UNLESS OTHERWISE SPECIFIED
- A) DOES NOT FULLY CONFORM TO JEDEC REGISTRATION MO-229, DATED 08/2012
 - B) ALL DIMENSIONS ARE IN MILLIMETERS.
 - C) DIMENSIONS DO NOT INCLUDE BURRS OR MOLD FLASH. MOLD FLASH OR BURRS DOES NOT EXCEED 0.10MM.
 - D) DIMENSIONING AND TOLERANCING PER ASME Y14.5M-1994.
 - E) IT IS RECOMMENDED TO HAVE NO TRACES OR VIAS WITHIN THE KEEP OUT AREA.



TRADEMARKS

The following includes registered and unregistered trademarks and service marks, owned by Fairchild Semiconductor and/or its global subsidiaries, and is not intended to be an exhaustive list of all such trademarks.

- | | | | |
|--|---|---------------------------------------|---|
| 2Cool™ | FPST™ | PowerTrench® | Sync-Lock™ |
| AccuPower™ | F-PFST™ | PowerXS™ | SYSTEM GENERAL®* |
| AX-CAP®* | FRFET® | Programmable Active Droop™ | TinyBoost™ |
| BitSiC™ | Global Power Resource SM | QFET® | TinyBuck™ |
| Build it Now™ | Green Bridge™ | QS™ | TinyCalc™ |
| CorePLUS™ | Green FPS™ | Quiet Series™ | TinyLogic® |
| CorePOWER™ | Green FPS™ e-Series™ | RapidConfigure™ | TINYOPTO™ |
| CROSSVOLT™ | Gmax™ | ™ | TinyPower™ |
| CTL™ | GTO™ | Saving our world, 1mW/W/kW at a time™ | TinyPWM™ |
| Current Transfer Logic™ | IntelliMAX™ | SignalWise™ | TinyWire™ |
| DEUXPEED® | ISOPANAR™ | SmartMax™ | TranSiC® |
| Dual Cool™ | Marking Small Speakers Sound Louder and Better™ | SMART START™ | TriFault Detect™ |
| EcoSPARK® | MegaBuck™ | Solutions for Your Success™ | TRUECURRENT®* |
| EfficientMax™ | MICROCOUPLER™ | SPM® | µSerDes™ |
| ESBC™ | MicroFET™ | STEALTH™ |  SerDes™ |
|  Fairchild® | MicroPak™ | SuperFET® | UHC® |
| Fairchild Semiconductor® | MicroPak2™ | SuperSOT™-3 | Ultra FRFET™ |
| FACT Quiet Series™ | MillerDrive™ | SuperSOT™-6 | UniFET™ |
| FACT® | MotionMax™ | SuperSOT™-8 | VCX™ |
| FAST® | mWSaver™ | SupreMOS® | VisualMax™ |
| FastvCore™ | OptoHit™ | SyncFET™ | VoltagePlus™ |
| FETBench™ | OPTOLOGIC® | | XST™ |
| | OPTOPLANAR® | | |

*Trademarks of System General Corporation, used under license by Fairchild Semiconductor.

DISCLAIMER

FAIRCHILD SEMICONDUCTOR RESERVES THE RIGHT TO MAKE CHANGES WITHOUT FURTHER NOTICE TO ANY PRODUCTS HEREIN TO IMPROVE RELIABILITY, FUNCTION, OR DESIGN. FAIRCHILD DOES NOT ASSUME ANY LIABILITY ARISING OUT OF THE APPLICATION OR USE OF ANY PRODUCT OR CIRCUIT DESCRIBED HEREIN; NEITHER DOES IT CONVEY ANY LICENSE UNDER ITS PATENT RIGHTS, NOR THE RIGHTS OF OTHERS. THESE SPECIFICATIONS DO NOT EXPAND THE TERMS OF FAIRCHILD'S WORLDWIDE TERMS AND CONDITIONS, SPECIFICALLY THE WARRANTY THEREIN, WHICH COVERS THESE PRODUCTS.

LIFE SUPPORT POLICY

FAIRCHILD'S PRODUCTS ARE NOT AUTHORIZED FOR USE AS CRITICAL COMPONENTS IN LIFE SUPPORT DEVICES OR SYSTEMS WITHOUT THE EXPRESS WRITTEN APPROVAL OF FAIRCHILD SEMICONDUCTOR CORPORATION.

As used here in:

- Life support devices or systems are devices or systems which, (a) are intended for surgical implant into the body or (b) support or sustain life, and (c) whose failure to perform when properly used in accordance with instructions for use provided in the labeling, can be reasonably expected to result in a significant injury of the user.
- A critical component in any component of a life support, device, or system whose failure to perform can be reasonably expected to cause the failure of the life support device or system, or to affect its safety or effectiveness.

ANTI-COUNTERFEITING POLICY

Fairchild Semiconductor Corporation's Anti-Counterfeiting Policy. Fairchild's Anti-Counterfeiting Policy is also stated on our external website, www.fairchildsemi.com, under Sales Support.

Counterfeiting of semiconductor parts is a growing problem in the industry. All manufactures of semiconductor products are experiencing counterfeiting of their parts. Customers who inadvertently purchase counterfeit parts experience many problems such as loss of brand reputation, substandard performance, failed application, and increased cost of production and manufacturing delays. Fairchild is taking strong measures to protect ourselves and our customers from the proliferation of counterfeit parts. Fairchild strongly encourages customers to purchase Fairchild parts either directly from Fairchild or from Authorized Fairchild Distributors who are listed by country on our web page cited above. Products customers buy either from Fairchild directly or from Authorized Fairchild Distributors are genuine parts, have full traceability, meet Fairchild's quality standards for handling and storage and provide access to Fairchild's full range of up-to-date technical and product information. Fairchild and our Authorized Distributors will stand behind all warranties and will appropriately address and warranty issues that may arise. Fairchild will not provide any warranty coverage or other assistance for parts bought from Unauthorized Sources. Fairchild is committed to combat this global problem and encourage our customers to do their part in stopping this practice by buying direct or from authorized distributors.

PRODUCT STATUS DEFINITIONS

Definition of Terms

| Datasheet Identification | Product Status | Definition |
|--------------------------|-----------------------|---|
| Advance Information | Formative / In Design | Datasheet contains the design specifications for product development. Specifications may change in any manner without notice. |
| Preliminary | First Production | Datasheet contains preliminary data; supplementary data will be published at a later date. Fairchild Semiconductor reserves the right to make changes at any time without notice to improve design. |
| No Identification Needed | Full Production | Datasheet contains final specifications. Fairchild Semiconductor reserves the right to make changes at any time without notice to improve the design. |
| Obsolete | Not In Production | Datasheet contains specifications on a product that is discontinued by Fairchild Semiconductor. The datasheet is for reference information only. |