

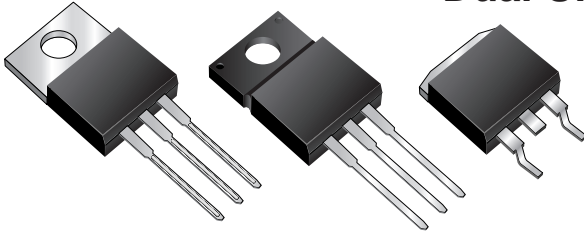


# BYV32, BYVF32 & BYVB32 Series

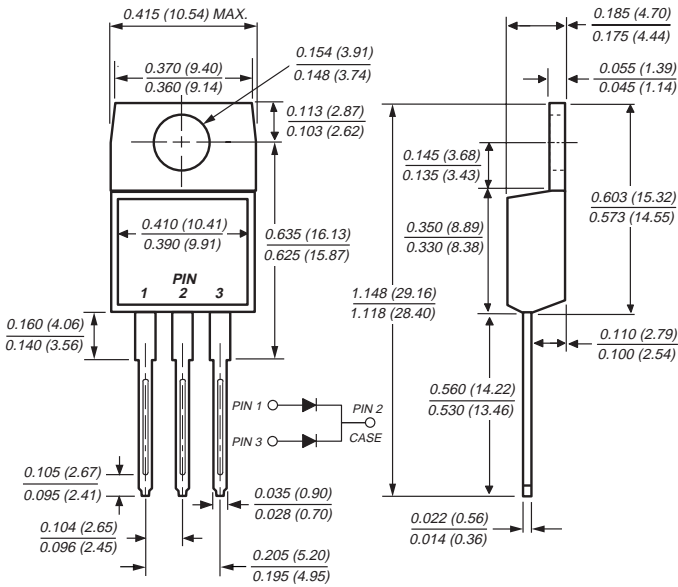
Vishay Semiconductors  
formerly General Semiconductor

## Dual Ultrafast Rectifiers

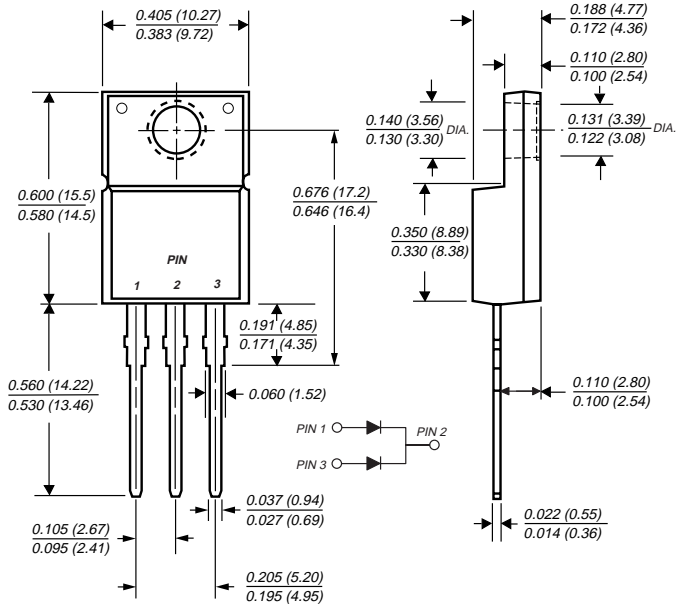
Reverse Voltage 50 to 200V  
Forward Current 18A  
Reverse Recovery Time 25ns



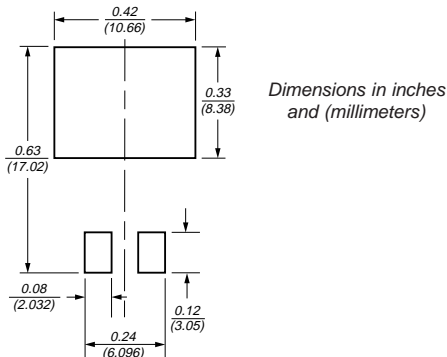
TO-220AB (BYV32 Series)



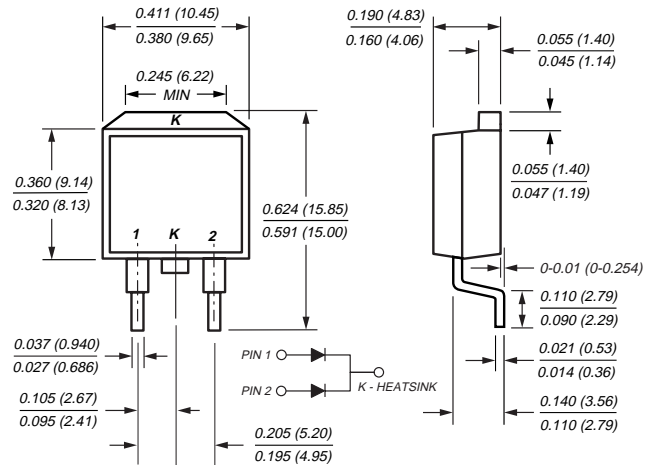
ITO-220AB (BYVF32 Series)



Mounting Pad Layout TO-263AB



TO-263AB (BYVB32 Series)



## Features

- Plastic package has Underwriters Laboratory Flammability Classification 94V-0
- Dual rectifier construction, positive centertap
- Glass passivated chip junctions
- Low power loss
- Low forward voltage, high current capability
- High surge current capability
- Superfast recovery times for high efficiency

## Mechanical Data

**Case:** JEDEC TO-220AB, ITO-220AB & TO-263AB molded plastic body

**Terminals:** Plated leads, solderable per MIL-STD-750, Method 2026

High temperature soldering guaranteed: 250°C, 0.16" (4.06mm) from case for 10 seconds

**Polarity:** As marked **Mounting Position:** Any

**Mounting Torque:** 10 in-lbs maximum

**Weight:** 0.08 oz., 2.24 g

# BYV32, BYVF32 & BYVB32 Series



Vishay Semiconductors  
formerly General Semiconductor

## Maximum Ratings (T<sub>C</sub> = 25°C unless otherwise noted)

Parameter	Symbol	BYV32-50	BYV32-100	BYV32-150	BYV32-200	Unit
Maximum repetitive peak reverse voltage	V <sub>RRM</sub>	50	100	150	200	V
Maximum RMS voltage	V <sub>RMS</sub>	35	70	105	140	V
Maximum DC blocking voltage	V <sub>DC</sub>	50	100	150	200	V
Maximum average forward rectified current at T <sub>C</sub> = 125°C	I <sub>F(AV)</sub>	18				A
Peak forward surge current 8.3ms single half sine-wave superimposed on rated load (JEDEC Method) per leg	I <sub>FSM</sub>	150				A
Operating junction and storage temperature range	T <sub>J</sub> , T <sub>STG</sub>	-65 to +150				°C
RMS Isolation voltage (BYVF type only) from terminals to heatsink with t = 1.0 second, RH ≤ 30%	V <sub>ISOL</sub>	4500 <sup>(1)</sup> 3500 <sup>(2)</sup> 1500 <sup>(3)</sup>				V

## Electrical Characteristics (T<sub>C</sub> = 25°C unless otherwise noted)

Parameter	Symbol	BYV32-50	BYV32-100	BYV32-150	BYV32-200	Unit
Maximum instantaneous forward voltage per leg at: <sup>(4)</sup> at I <sub>F</sub> = 20A at I <sub>F</sub> = 5.0A, T <sub>J</sub> = 100°C	V <sub>F</sub>	1.15 0.85				V
Maximum DC reverse current per leg at rated DC blocking voltage T <sub>J</sub> = 25°C T <sub>J</sub> = 100°C	I <sub>R</sub>	10 600				μA
Maximum reverse recovery time per leg at I <sub>F</sub> = 1A, V <sub>R</sub> = 30V, di/dt = 100A/μs, I <sub>rr</sub> = 10% I <sub>RM</sub>	t <sub>rr</sub>	25				ns
Typical junction capacitance per leg at 4V, 1MHz	C <sub>J</sub>	45				pF

## Thermal Characteristics (T<sub>C</sub> = 25°C unless otherwise noted)

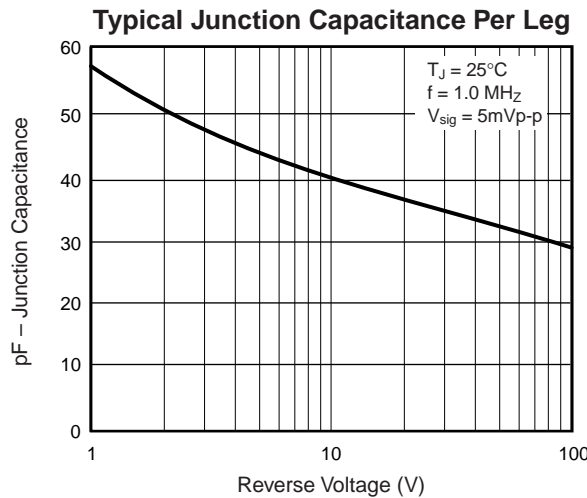
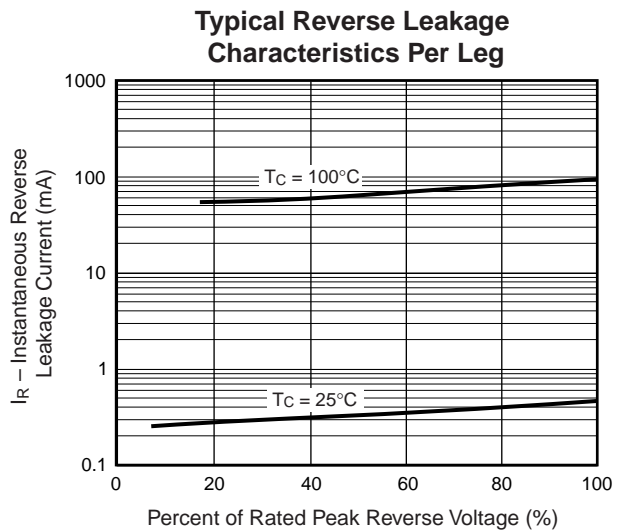
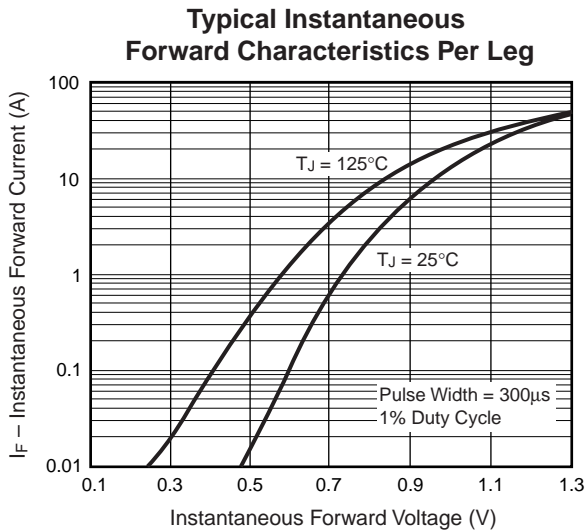
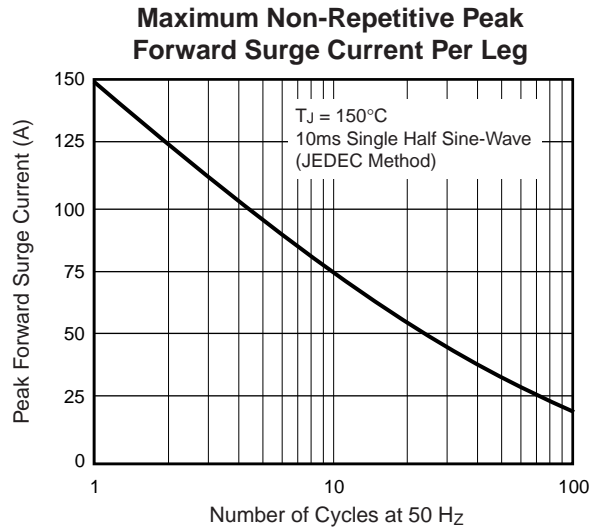
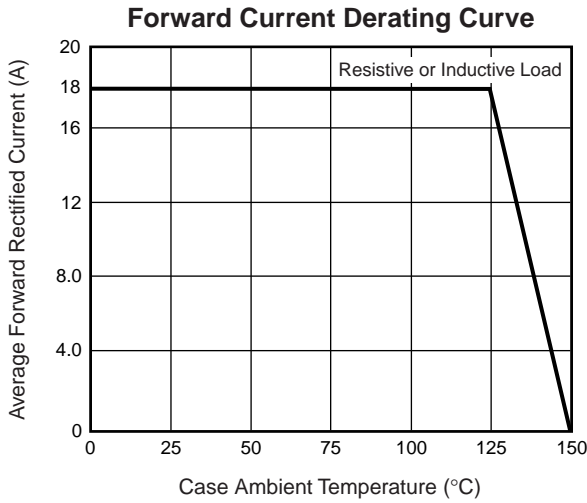
Parameter	Symbol	BYV	BYVF	BYVB	Unit
Thermal resistance from junction to case per leg	R <sub>θJC</sub>	1.6	5.0	1.6	°C/W

### Notes:

- (1) Clip mounting (on case), where lead does not overlap heatsink with 0.110" offset
- (2) Clip mounting (on case), where leads do overlap heatsink
- (3) Screw mounting with 4-40 screw, where washer diameter is ≤ 4.9mm (0.19")
- (4) Pulse test: 300μs pulse width, 1% duty cycle



## Ratings and Characteristic Curves ( $T_A = 25^\circ\text{C}$ unless otherwise noted)





LittleDiode supplies new, hard to find or obsolete electronic components and semiconductors all over the world.

With over two million different components listed you are sure to find the part you need.

Feel free to visit us today at our online store:

[LittleDiode.com](http://LittleDiode.com)

Looking forward to providing you with the best possible service.