

CMHZ4614  
THRU  
CMHZ4627

500mW LOW NOISE ZENER DIODE  
5% TOLERANCE



SOD-123 CASE

**Central**<sup>TM</sup>  
**Semiconductor Corp.**

**DESCRIPTION:**

The CENTRAL SEMICONDUCTOR CMHZ4614 Series Silicon Zener Diode is a high quality voltage regulator designed for low leakage, low current and low noise applications.

**ABSOLUTE MAXIMUM RATINGS:**

Power Dissipation (@ $T_L=75^\circ\text{C}$ )  
Storage Temperature Range  
Maximum Junction Temperature  
Thermal Resistance

**SYMBOL**

$P_D$  500  
 $T_{stg}$  -65 to +175  
 $T_J$  +150  
 $\Theta_{JL}$  150

**UNIT**

mW  
 $^\circ\text{C}$   
 $^\circ\text{C}$   
 $^\circ\text{C/W}$

**ELECTRICAL CHARACTERISTICS:** ( $T_A=25^\circ\text{C}$ )  $V_F=1.5\text{V MAX @ } I_F=100\text{mA}$  FOR ALL TYPES

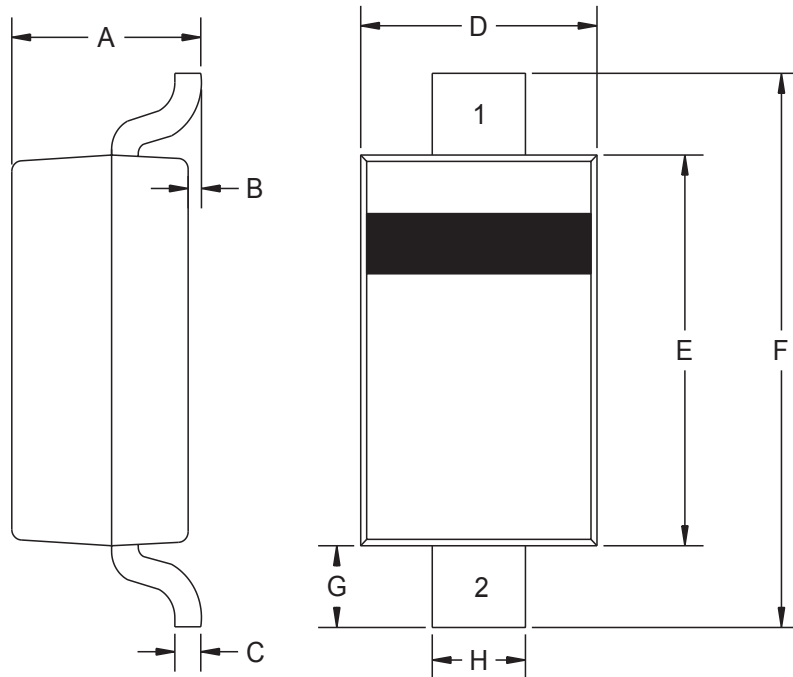
TYPE NO.	ZENER VOLTAGE			TEST CURRENT	MAXIMUM ZENER IMPEDANCE	MAXIMUM REVERSE LEAKAGE CURRENT		MAXIMUM ZENER CURRENT	MAXIMUM NOISE DENSITY	MARKING CODE				
	$V_Z@Z_T$					$I_{ZT}$	$Z_{ZT}@Z_T$				$I_R@V_R$		$I_{ZM}$	$N_D@I_{ZT}=250\mu\text{A}$
	MIN	NOM	MAX								$\mu\text{A}$	$\Omega$		
CMHZ4614*	1.710	1.8	1.890	250	1200	7.5	1.0	120	1.0	CHC				
CMHZ4615*	1.900	2.0	2.100	250	1250	5.0	1.0	110	1.0	CHD				
CMHZ4616*	2.090	2.2	2.310	250	1300	4.0	1.0	100	1.0	CHE				
CMHZ4617*	2.280	2.4	2.520	250	1400	2.0	1.0	95	1.0	CHF				
CMHZ4618*	2.565	2.7	2.835	250	1500	1.0	1.0	90	1.0	CHH				
CMHZ4619*	2.850	3.0	3.150	250	1600	0.8	1.0	85	1.0	CHJ				
CMHZ4620*	3.135	3.3	3.465	250	1650	7.5	1.5	80	1.0	CHK				
CMHZ4621*	3.420	3.6	3.780	250	1700	7.5	2.0	75	1.0	CHM				
CMHZ4622*	3.705	3.9	4.095	250	1650	5.0	2.0	70	1.0	CHN				
CMHZ4623*	4.085	4.3	4.515	250	1600	4.0	2.0	65	1.0	CHP				
CMHZ4624*	4.465	4.7	4.935	250	1550	10	3.0	60	1.0	CHT				
CMHZ4625*	4.845	5.1	5.355	250	1500	10	3.0	55	2.0	CHU				
CMHZ4626*	5.320	5.6	5.880	250	1400	10	4.0	50	4.0	CHV				
CMHZ4627*	5.890	6.2	6.510	250	1200	10	5.0	45	5.0	CHA				

\*Available on special order; consult factory.

R0 ( 11-September 2001)

500mW LOW NOISE ZENER DIODE  
5% TOLERANCE

SOD-123 CASE - MECHANICAL OUTLINE



R3

SYMBOL	INCHES		MILLIMETERS	
	MIN	MAX	MIN	MAX
A	0.037	0.053	0.95	1.35
B	-	0.005	-	0.12
C	-	0.008	-	0.20
D	0.055	0.071	1.40	1.80
E	0.098	0.112	2.50	2.84
F	0.140	0.154	3.55	3.90
G	0.010	-	0.25	-
H	0.020	0.028	0.50	0.70

SOD-123 (REV:R3)

R0 ( 11-September 2001)



LittleDiode supplies new, hard to find or obsolete electronic components and semiconductors all over the world.

With over two million different components listed you are sure to find the part you need.

Feel free to visit us today at our online store:

**[LittleDiode.com](http://LittleDiode.com)**

Looking forward to providing you with the best possible service.