

# Rectifier diode

## 1SR156-400

### ●Applications

High speed rectification

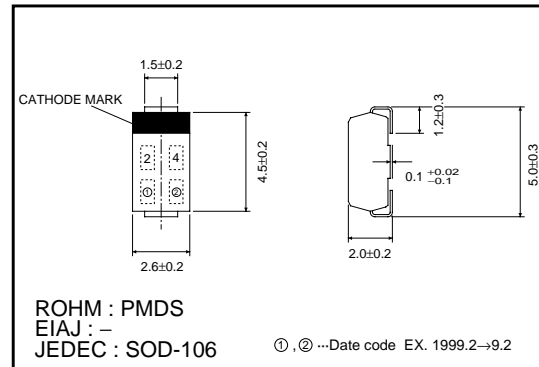
### ●Features

- 1) Small surface mounting type. (PMDS)
- 2)  $V_{RM}=400V$  guaranteed while maintaining high speed.
- 3) High reliability.

### ●Construction

Silicon diffused junction

### ●External dimensions (Units : mm)



### ●Absolute maximum ratings (Ta = 25°C)

Parameter	Symbol	Limits	Unit
Absolute peak reverse voltage	$V_{RSM}$	500	V
Peak reverse voltage	$V_{RM}$	400	V
Mean rectifying current	$I_o$	1.0	A
Peak forward surge current *	$I_{FSM}$	20	A
Junction temperature	$T_j$	150	°C
Storage temperature	$T_{stg}$	-55~+150	°C

\* 60Hz for 1  $\mu$ s

### ●Electrical characteristics (Ta = 25°C)

Parameter	Symbol	Min.	Typ.	Max.	Unit	Conditions
Forward voltage	$V_F$	-	-	1.3	V	$I_F=0.8A$
Reverse current	$I_R$	-	-	10	$\mu A$	$V_R=400V$
Reverse recovery time	$t_{rr}$	-	-	0.4	$\mu s$	$I_F=I_R=10mA, I_{rr}=1mA$

Diodes

●Electrical characteristic curves (Ta = 25°C)

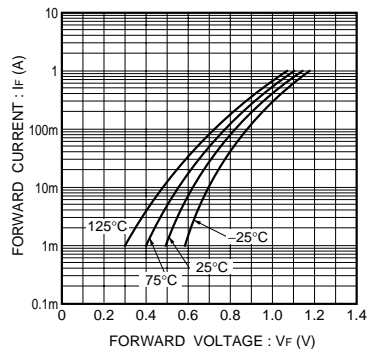


Fig.1 Forward characteristics

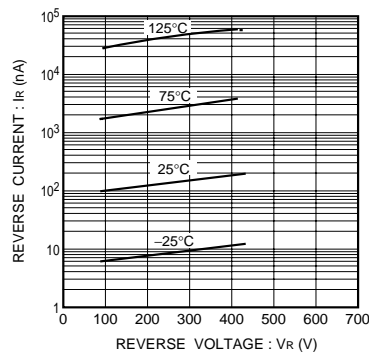


Fig.2 Reverse characteristics

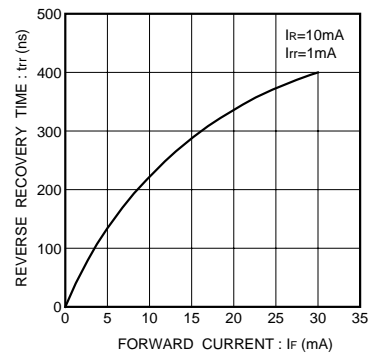


Fig.3 Reverse recovery time characteristics

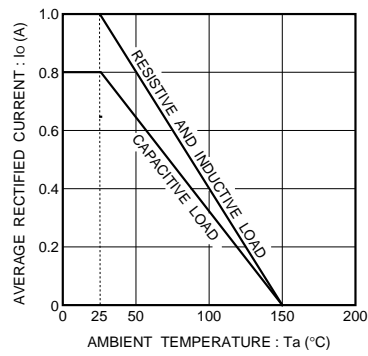


Fig.4 Derating curve

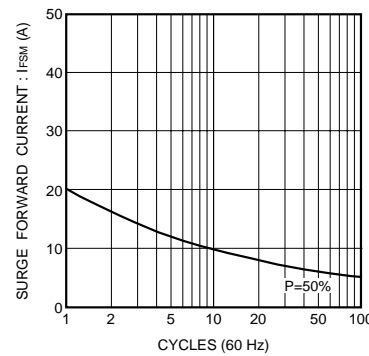


Fig.5 Maximum peak forward surge current characteristics

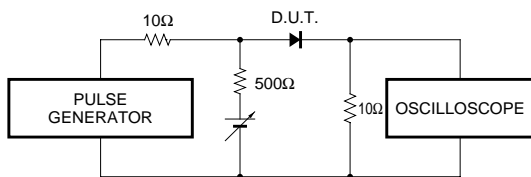


Fig.6 Reverse recovery time (trr) measurement circuit



LittleDiode supplies new, hard to find or obsolete electronic components and semiconductors all over the world.

With over two million different components listed you are sure to find the part you need.

Feel free to visit us today at our online store:

[LittleDiode.com](http://LittleDiode.com)

Looking forward to providing you with the best possible service.