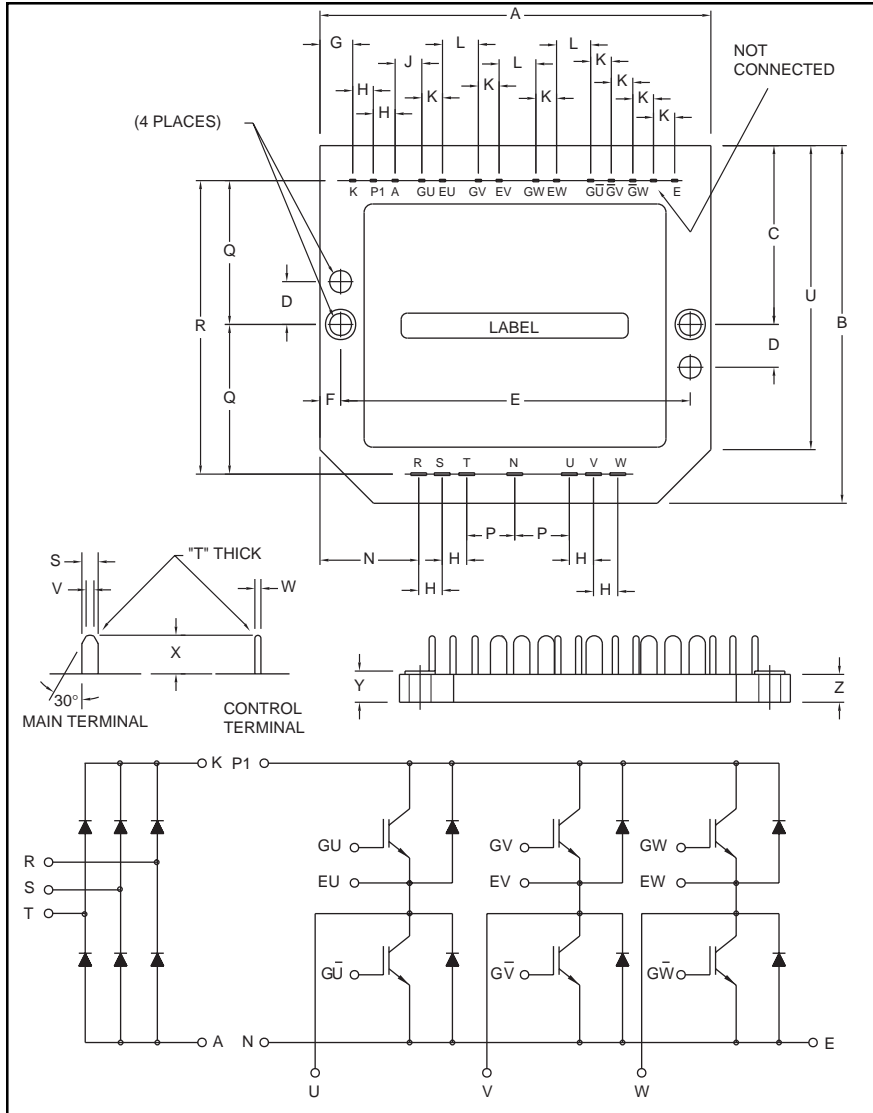


CI Module

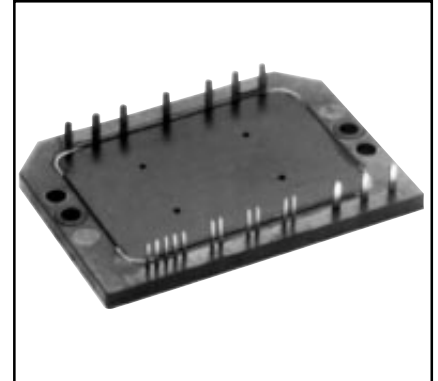
Three Phase Converter +
Three Phase Inverter
20 Amperes/600 Volts



Outline Drawing and Circuit Diagram

Dimensions	Inches	Millimeters
A	3.54	90.0
B	2.52	64.0
C	1.26	32.0
D	0.35	9.0
E	3.15	80.0
F	0.20	5.0
G	0.30	7.5
H	0.32	8.0
J	0.48	12.28
K	0.10	2.54
L	0.30	7.62
M	0.19	4.8

Dimensions	Inches	Millimeters
N	0.65	16.5
P	0.49	12.5
Q	1.04	26.5
R	2.09	53.0
S	0.08	2.0
T	0.02	0.5
U	2.13	54.0
V	0.04	1.0
W	0.03	0.8
X	0.32	8.0
Y	0.21	5.3
Z	0.20	5.0



Description:

Powerex CI Modules are designed for use in switching applications. Each module consists of a three phase diode converter section and a three phase IGBT inverter section. All components and interconnects are isolated from the heat sinking baseplate, offering simplified system assembly and thermal management.

Features:

- Low Drive Power
- Low $V_{CE(sat)}$
- Discrete Super-Fast Recovery (70ns) Free-Wheel Diodes
- High Frequency Operation (20-25 kHz)
- Isolated Baseplate for Easy Heat Sinking

Applications:

- AC Motor Control
- Motion/Servo Control
- General Purpose Inverters
- Robotics

Ordering Information:

Example: Select the complete nine digit module part number you desire from the table below - i.e. CM20MD1-12H is a 600V (V_{CES}), 20 Ampere CI Power Module.

Type	Current Rating Amperes	V_{CES} Volts (x 50)
CM	20	12

CM20MD1-12H

CI Module

Three Phase Converter + Three Phase Inverter

20 Amperes/600 Volts

Absolute Maximum Ratings, $T_j = 25^\circ\text{C}$ unless otherwise specified

Characteristics	Symbol	CM20MD1-12H	Units
Power Device Junction Temperature	T_j	-40 to 150	$^\circ\text{C}$
Storage Temperature	T_{stg}	-40 to 125	$^\circ\text{C}$
Mounting Torque, M4 Mounting Screws	—	13	in-lb
Module Weight (Typical)	—	60	Grams
Isolation Voltage, AC 1 minute, 60Hz	V_{RMS}	2500	Volts
Converter Sector			
Repetitive Peak Reverse Voltage	V_{RRM}	800	Volts
Recommended AC Input Voltage	E_a	220	Volts
DC Output Current	I_O	20	Amperes
Surge (Non-repetitive) Forward Current	I_{FSM}	300	Amperes
I^2t for Fusing	I^2t	375	A^2s
IGBT Inverter Sector			
Collector-Emitter Voltage (G-E Short)	V_{CES}	600	Volts
Gate-Emitter Voltage (C-E Short)	V_{GES}	± 20	Volts
Collector Current	I_C	20	Amperes
Collector Current (Pulse)*	I_{CM}	40	Amperes
Emitter Current**	I_E	20	Amperes
Emitter Current** (Pulse)*	I_{EM}	40	Amperes
Maximum Collector Dissipation	P_C	57	Watts

Electrical and Mechanical Characteristics, $T_j = 25^\circ\text{C}$ unless otherwise specified

Characteristics	Symbol	Test Conditions	Min.	Typ.	Max.	Units	
Converter Sector							
Repetitive Reverse Current	I_{RRM}	$V_R = V_{\text{RRM}}, T_j = 150^\circ\text{C}$	—	—	8	mA	
Forward Voltage Drop	V_{FM}	$I_F = 20\text{A}$	—	—	1.5	Volts	
Thermal Resistance (Junction-to-Fin)	$R_{\text{th(j-f)}}$	Per Diode	—	—	3.6	$^\circ\text{C/W}$	
IGBT Inverter Sector							
Collector Cutoff Current	I_{CES}	$V_{\text{CE}} = V_{\text{CES}}, V_{\text{GE}} = 0\text{V}$	—	—	1	mA	
Gate-Emitter Threshold Voltage	$V_{\text{GE(th)}}$	$V_{\text{CE}} = 10\text{V}, I_C = 2.0\text{mA}$	4.5	6.0	7.5	Volts	
Gate-Emitter Cutoff Current	I_{GES}	$V_{\text{GE}} = V_{\text{GES}}, V_{\text{CE}} = 0\text{V}$	—	—	0.5	μA	
Collector-Emitter Saturation Voltage	$V_{\text{CE(sat)}}$	$V_{\text{GE}} = 15\text{V}, I_C = 20\text{A}, T_j = 25^\circ\text{C}$	—	2.1	2.8	Volts	
		$V_{\text{GE}} = 15\text{V}, I_C = 20\text{A}, T_j = 150^\circ\text{C}$	—	2.15	—	Volts	
Input Capacitance	C_{ies}	$V_{\text{GE}} = 0\text{V}, V_{\text{CE}} = 10\text{V}$	—	—	2.0	nF	
Output Capacitance	C_{oes}		—	—	1.5	nF	
Reverse Transfer Capacitance	C_{res}		—	—	0.4	nF	
Total Gate Charge	Q_G		$V_{\text{CC}} = 300\text{V}, I_C = 20\text{A}, V_{\text{GE}} = 15\text{V}$	—	60	—	nC
Resistive	Turn-on Delay Time	$t_{\text{d(on)}}$	$V_{\text{GE1}} = V_{\text{GE2}} = 15\text{V},$ $V_{\text{CC}} = 300\text{V}, I_C = 20\text{A},$	—	—	120	nS
	Rise Time	t_r		—	—	300	nS
Switching	Turn-off Delay Time	$t_{\text{d(off)}}$	$R_g = 31\Omega,$ Resistive Load	—	—	200	nS
	Fall Time	t_f		—	—	300	nS
Emitter-Collector Voltage	V_{EC}	$I_E = 20\text{A}, V_{\text{GE}} = 0\text{V}$	—	—	2.8	Volts	
Reverse Recovery Time	t_{rr}	$I_E = 20\text{A}, V_{\text{GE}} = 0\text{V},$	—	—	110	nS	
Reverse Recovery Charge	Q_{rr}	$di_E/dt = -40\text{A}/\mu\text{s}$	—	0.05	—	μC	
Thermal Resistance (Junction-to-Fin)	$R_{\text{th(j-f)}}$	Per IGBT	—	—	2.2	$^\circ\text{C/W}$	
		Per FWDi	—	—	3.1	$^\circ\text{C/W}$	

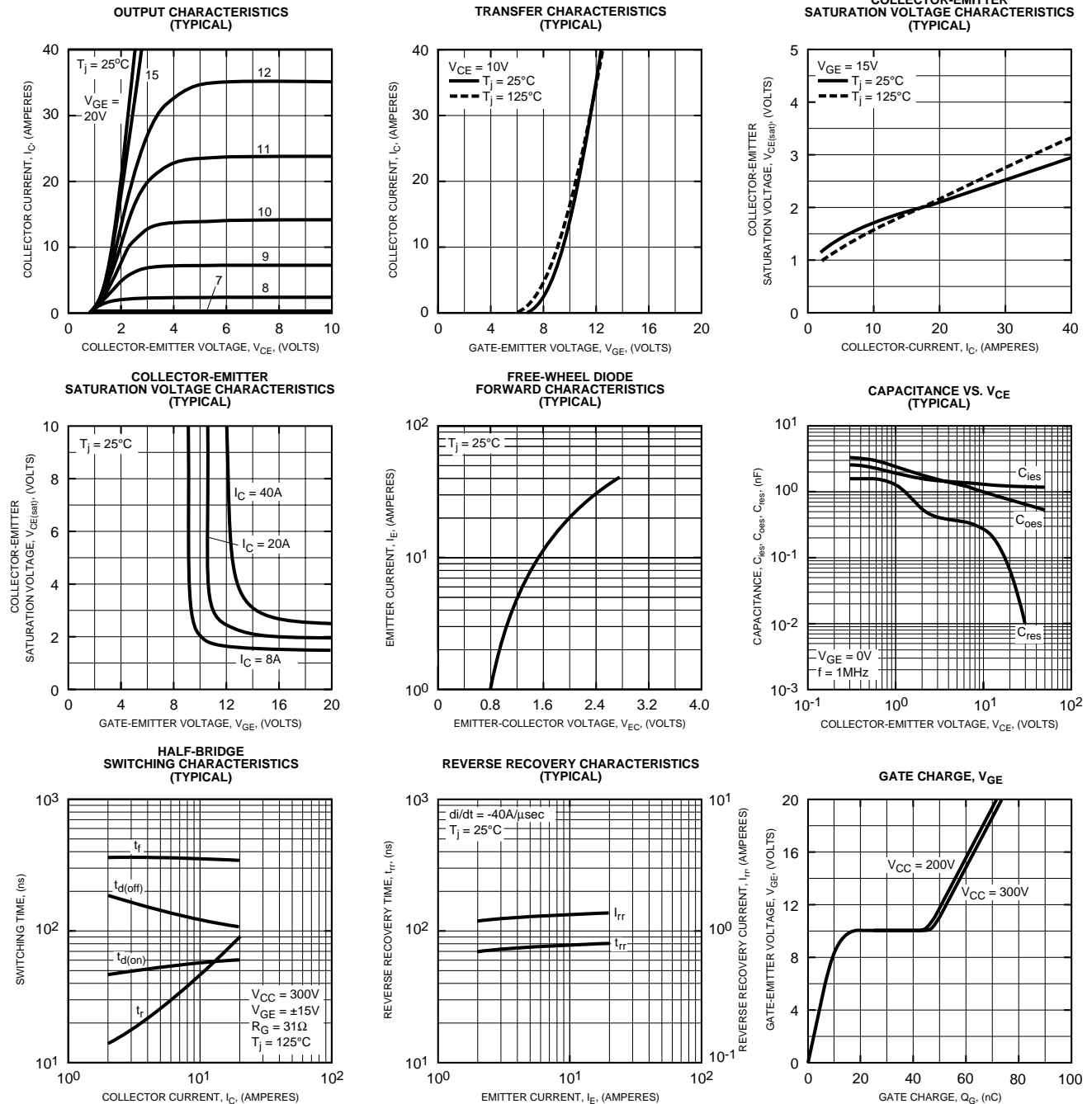
* Pulse width and repetition rate should be such that device junction temperature does not exceed maximum rating.

** Characteristics of the anti-parallel emitter-collector free-wheel diode.



Powerex, Inc., 200 Hillis Street, Youngwood, Pennsylvania 15697-1800 (724) 925-7272

CM20MD1-12H
CI Module
Three Phase Converter + Three Phase Inverter
20 Amperes/600 Volts





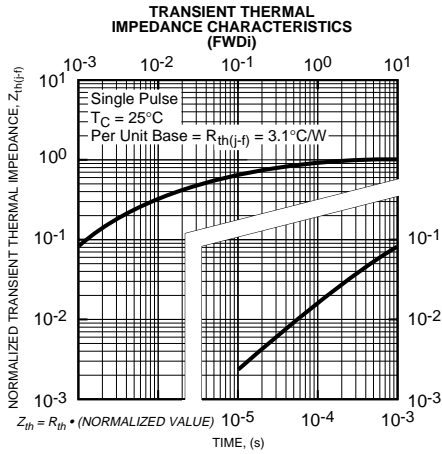
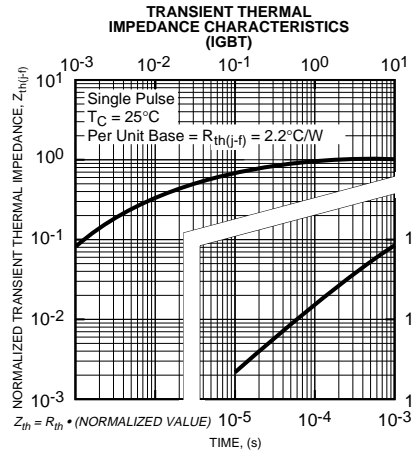
Powerex, Inc., 200 Hillis Street, Youngwood, Pennsylvania 15697-1800 (724) 925-7272

CM20MD1-12H

CI Module

Three Phase Converter + Three Phase Inverter

20 Amperes/600 Volts





LittleDiode supplies new, hard to find or obsolete electronic components and semiconductors all over the world.

With over two million different components listed you are sure to find the part you need.

Feel free to visit us today at our online store:

LittleDiode.com

Looking forward to providing you with the best possible service.