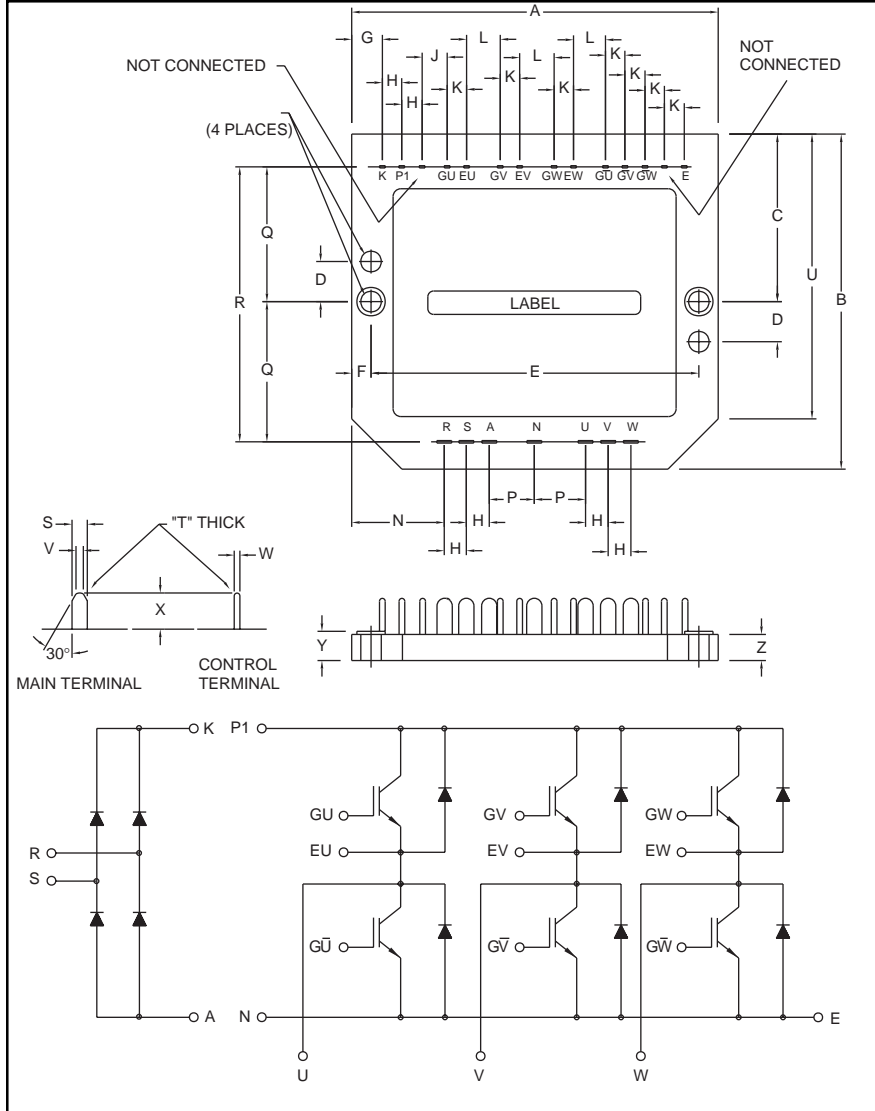


### CI Module

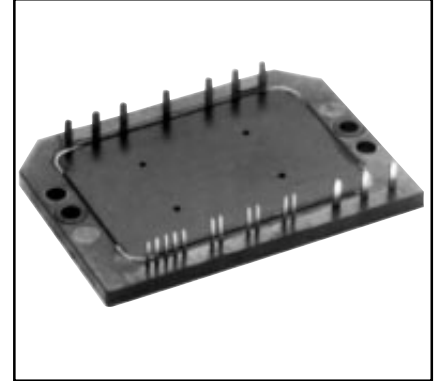
Single Phase Converter +  
Three Phase Inverter  
20 Amperes/600 Volts



Outline Drawing and Circuit Diagram

Dimensions	Inches	Millimeters
A	3.54	90.0
B	2.52	64.0
C	1.26	32.0
D	0.35	9.0
E	3.15	80.0
F	0.20	5.0
G	0.30	7.5
H	0.32	8.0
J	0.48	12.28
K	0.10	2.54
L	0.30	7.62
M	0.19	4.8

Dimensions	Inches	Millimeters
N	0.65	16.5
P	0.49	12.5
Q	1.04	26.5
R	2.09	53.0
S	0.08	2.0
T	0.02	0.5
U	2.13	54.0
V	0.04	1.0
W	0.03	0.8
X	0.32	8.0
Y	0.21	5.3
Z	0.20	5.0



#### Description:

Powerex CI Modules are designed for use in switching applications. Each module consists of a single phase diode converter section and a three phase IGBT inverter section. All components and interconnects are isolated from the heat sinking baseplate, offering simplified system assembly and thermal management.

#### Features:

- Low Drive Power
- Low  $V_{CE(sat)}$
- Discrete Super-Fast Recovery (70ns) Free-Wheel Diodes
- High Frequency Operation (20-25 kHz)
- Isolated Baseplate for Easy Heat Sinking

#### Applications:

- AC Motor Control
- Motion/Servo Control
- General Purpose Inverters
- Robotics

#### Ordering Information:

Example: Select the complete nine digit module part number you desire from the table below - i.e. CM20MD3-12H is a 600V ( $V_{CES}$ ), 20 Ampere CI Power Module.

Type	Current Rating Amperes	$V_{CES}$ Volts (x 50)
CM	20	12



Powerex, Inc., 200 Hillis Street, Youngwood, Pennsylvania 15697-1800 (724) 925-7272

**CM20MD3-12H**

**CI Module**

**Single Phase Converter + Three Phase Inverter**

20 Amperes/600 Volts

**Absolute Maximum Ratings,  $T_j = 25^\circ\text{C}$  unless otherwise specified**

Characteristics	Symbol	CM20MD3-12H	Units
Power Device Junction Temperature	$T_j$	-40 to 150	$^\circ\text{C}$
Storage Temperature	$T_{\text{stg}}$	-40 to 125	$^\circ\text{C}$
Mounting Torque, M4 Mounting Screws	—	13	in-lb
Module Weight (Typical)	—	60	Grams
Isolation Voltage, AC 1 minute, 60Hz	$V_{\text{RMS}}$	2500	Volts

**Converter Sector**

Repetitive Peak Reverse Voltage	$V_{\text{RRM}}$	800	Volts
Recommended AC Input Voltage	$E_a$	220	Volts
DC Output Current	$I_O$	15	Amperes
Surge (Non-repetitive) Forward Current	$I_{\text{FSM}}$	375	Amperes
$I^2t$ for Fusing	$I^2t$	585	$\text{A}^2\text{s}$

**IGBT Inverter Sector**

Collector-Emitter Voltage (G-E Short)	$V_{\text{CES}}$	600	Volts
Gate-Emitter Voltage (C-E Short)	$V_{\text{GES}}$	$\pm 20$	Volts
Collector Current	$I_C$	20	Amperes
Collector Current (Pulse)*	$I_{\text{CM}}$	40	Amperes
Emitter Current**	$I_E$	20	Amperes
Emitter Current** (Pulse)*	$I_{\text{EM}}$	40	Amperes
Maximum Collector Dissipation	$P_C$	57	Watts

**Electrical and Mechanical Characteristics,  $T_j = 25^\circ\text{C}$  unless otherwise specified**

Characteristics	Symbol	Test Conditions	Min.	Typ.	Max.	Units
<b>Converter Sector</b>						
Repetitive Reverse Current	$I_{\text{RRM}}$	$V_R = V_{\text{RRM}}, T_j = 150^\circ\text{C}$	—	—	8	mA
Forward Voltage Drop	$V_{\text{FM}}$	$I_F = 25\text{A}$	—	—	1.5	Volts
Thermal Resistance (Junction-to-Fin)	$R_{\text{th(j-f)}}$	Per Diode	—	—	3.3	$^\circ\text{C/W}$

**IGBT Inverter Sector**

Collector Cutoff Current	$I_{\text{CES}}$	$V_{\text{CE}} = V_{\text{CES}}, V_{\text{GE}} = 0\text{V}$	—	—	1	mA	
Gate-Emitter Threshold Voltage	$V_{\text{GE(th)}}$	$V_{\text{CE}} = 10\text{V}, I_C = 2.0\text{mA}$	4.5	6.0	7.5	Volts	
Gate-Emitter Cutoff Current	$I_{\text{GES}}$	$V_{\text{GE}} = V_{\text{GES}}, V_{\text{CE}} = 0\text{V}$	—	—	0.5	$\mu\text{A}$	
Collector-Emitter Saturation Voltage	$V_{\text{CE(sat)}}$	$V_{\text{GE}} = 15\text{V}, I_C = 20\text{A}, T_j = 25^\circ\text{C}$	—	2.1	2.8	Volts	
		$V_{\text{GE}} = 15\text{V}, I_C = 20\text{A}, T_j = 150^\circ\text{C}$	—	2.15	—	Volts	
Input Capacitance	$C_{\text{ies}}$	$V_{\text{GE}} = 0\text{V}, V_{\text{CE}} = 10\text{V}$	—	—	2.0	nF	
Output Capacitance	$C_{\text{oes}}$		—	—	1.5	nF	
Reverse Transfer Capacitance	$C_{\text{res}}$		—	—	0.4	nF	
Total Gate Charge	$Q_G$		$V_{\text{CC}} = 300\text{V}, I_C = 20\text{A}, V_{\text{GE}} = 15\text{V}$	—	60	—	nC
Resistive	Turn-on Delay Time	$t_{\text{d(on)}}$	$V_{\text{GE}1} = V_{\text{GE}2} = 15\text{V},$ $V_{\text{CC}} = 300\text{V}, I_C = 20\text{A},$	—	—	120	nS
	Rise Time	$t_r$		—	—	300	nS
Switching	Turn-off Delay Time	$t_{\text{d(off)}}$	$R_g = 31\Omega,$ Resistive Load	—	—	200	nS
	Fall Time	$t_f$		—	—	300	nS
Emitter-Collector Voltage	$V_{\text{EC}}$	$I_E = 20\text{A}, V_{\text{GE}} = 0\text{V}$	—	—	2.8	Volts	
Reverse Recovery Time	$t_{\text{rr}}$	$I_E = 20\text{A}, V_{\text{GE}} = 0\text{V},$	—	—	110	nS	
Reverse Recovery Charge	$Q_{\text{rr}}$	$di_E/dt = -40\text{A}/\mu\text{s}$	—	0.05	—	$\mu\text{C}$	
Thermal Resistance (Junction-to-Fin)	$R_{\text{th(j-f)}}$	Per IGBT	—	—	2.2	$^\circ\text{C/W}$	
		Per FWDi	—	—	3.1	$^\circ\text{C/W}$	

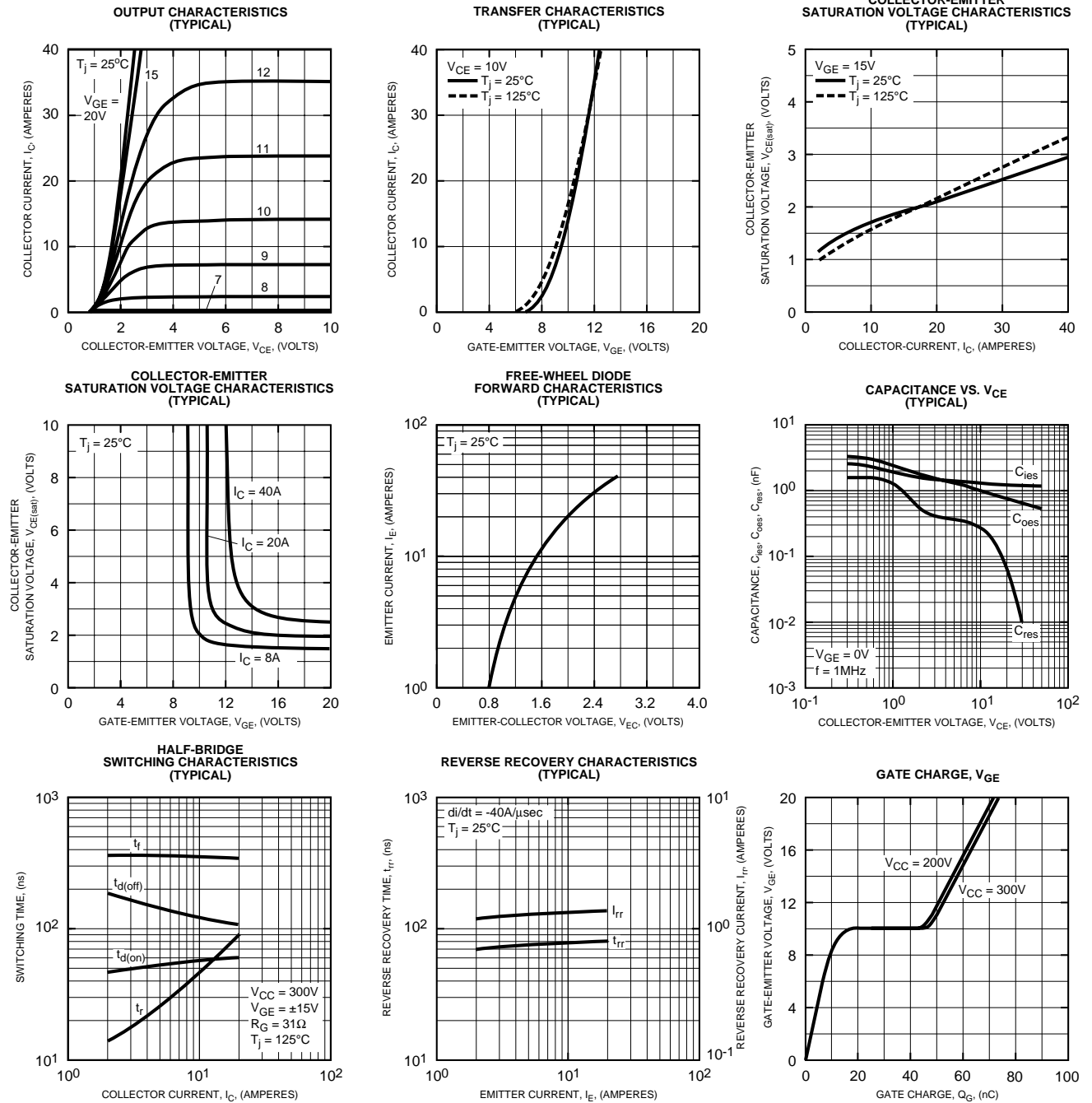
\* Pulse width and repetition rate should be such that device junction temperature does not exceed maximum rating.

\*\* Characteristics of the anti-parallel emitter-collector free-wheel diode.



Powerex, Inc., 200 Hillis Street, Youngwood, Pennsylvania 15697-1800 (724) 925-7272

**CM20MD3-12H**  
**CI Module**  
**Single Phase Converter + Three Phase Inverter**  
**20 Amperes/600 Volts**





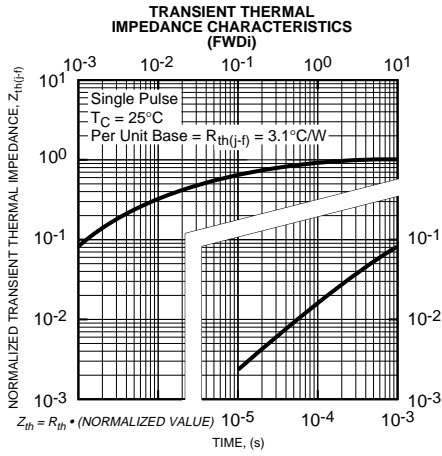
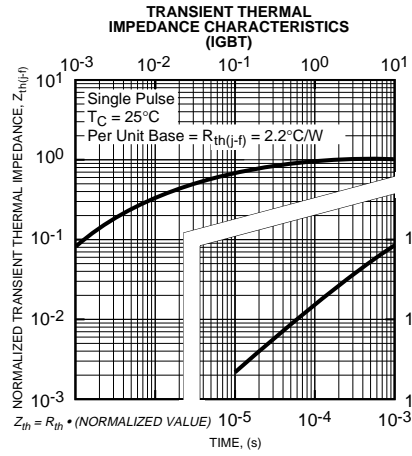
Powerex, Inc., 200 Hillis Street, Youngwood, Pennsylvania 15697-1800 (724) 925-7272

**CM20MD3-12H**

**CI Module**

**Single Phase Converter + Three Phase Inverter**

20 Amperes/600 Volts





LittleDiode supplies new, hard to find or obsolete electronic components and semiconductors all over the world.

With over two million different components listed you are sure to find the part you need.

Feel free to visit us today at our online store:

[LittleDiode.com](http://LittleDiode.com)

Looking forward to providing you with the best possible service.