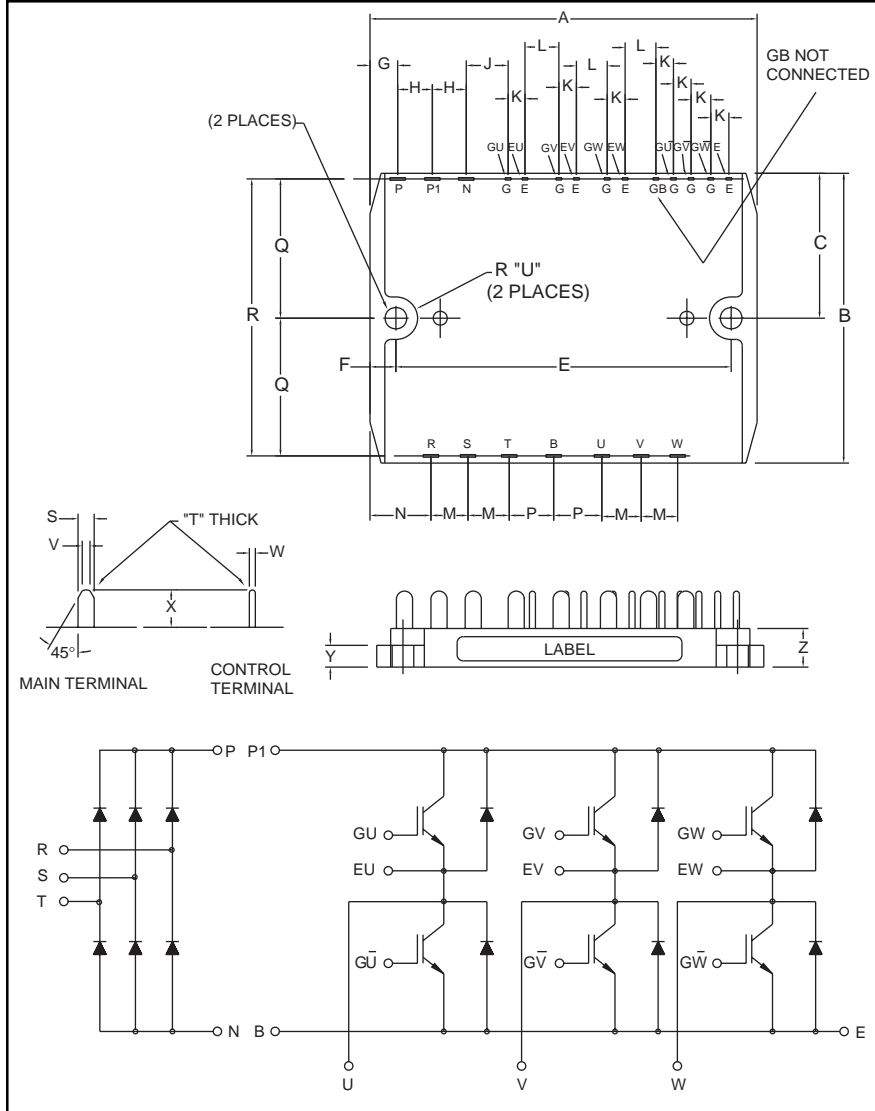


### CI Module

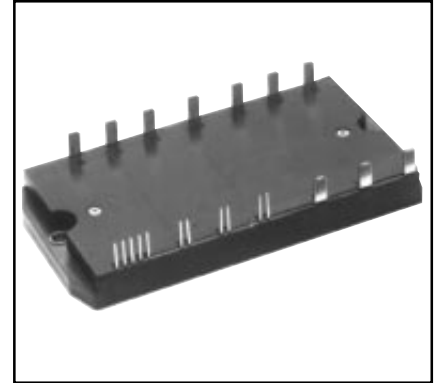
Three Phase Converter +  
Three Phase Inverter  
50 Amperes/600 Volts



Outline Drawing and Circuit Diagram

Dimensions	Inches	Millimeters
A	4.53	115.0
B	2.36	60.0
C	1.18	30.0
D	0.18	4.5
E	4.13	105.0
F	0.20	5.0
G	0.31	8.0
H	0.59	15.0
J	0.68	17.2
K	0.10	2.54
L	0.40	10.16
M	0.49	12.5

Dimensions	Inches	Millimeters
N	0.51	13.0
P	0.59	15.0
Q	1.14	29.0
R	2.28	58.0
S	0.16	4.0
T	0.02	0.6
U	0.22	5.5
V	0.08	2.0
W	0.02	0.6
X	0.35	9.0
Y	0.25	6.3
Z	0.47	12.0



### Description:

Powerex CI Modules are designed for use in switching applications. Each module consists of a three phase diode converter section and a three phase IGBT inverter section. All components and interconnects are isolated from the heat sinking baseplate, offering simplified system assembly and thermal management.

### Features:

- Low Drive Power
- Low  $V_{CE(sat)}$
- Discrete Super-Fast Recovery (70ns) Free-Wheel Diodes
- High Frequency Operation (20-25 kHz)
- Isolated Baseplate for Easy Heat Sinking

### Applications:

- AC Motor Control
- Motion/Servo Control
- General Purpose Inverters
- Robotics

### Ordering Information:

Example: Select the complete nine digit module part number you desire from the table below - i.e. CM50MD1-12H is a 600V ( $V_{CES}$ ), 50 Ampere CI Power Module.

Type	Current Rating Amperes	$V_{CES}$ Volts (x 50)
CM	50	12

**CM50MD1-12H**

**CI Module**

**Three Phase Converter + Three Phase Inverter**

50 Amperes/600 Volts

**Absolute Maximum Ratings,  $T_j = 25^\circ\text{C}$  unless otherwise specified**

Characteristics	Symbol	CM50MD1-12H	Units
Power Device Junction Temperature	$T_j$	-40 to 150	$^\circ\text{C}$
Storage Temperature	$T_{stg}$	-40 to 125	$^\circ\text{C}$
Mounting Torque, M4 Mounting Screws	—	13	in-lb
Module Weight (Typical)	—	100	Grams
Isolation Voltage, AC 1 minute, 60Hz	$V_{RMS}$	2500	Volts

**Converter Sector**

Repetitive Peak Reverse Voltage	$V_{RRM}$	800	Volts
Recommended AC Input Voltage	$E_a$	220	Volts
DC Output Current	$I_o$	50	Amperes
Surge (Non-repetitive) Forward Current	$I_{FSM}$	550	Amperes
$I^2t$ for Fusing	$I^2t$	$1.2 \times 10^3$	$\text{A}^2\text{s}$

**IGBT Inverter Sector**

Collector-Emitter Voltage (G-E Short)	$V_{CES}$	600	Volts
Gate-Emitter Voltage (C-E Short)	$V_{GES}$	$\pm 20$	Volts
Collector Current	$I_C$	50	Amperes
Collector Current (Pulse)*	$I_{CM}$	100	Amperes
Emitter Current**	$I_E$	50	Amperes
Emitter Current** (Pulse)*	$I_{EM}$	100	Amperes
Maximum Collector Dissipation	$P_C$	104	Watts

**Electrical and Mechanical Characteristics,  $T_j = 25^\circ\text{C}$  unless otherwise specified**

Characteristics	Symbol	Test Conditions	Min.	Typ.	Max.	Units
<b>Converter Sector</b>						
Repetitive Reverse Current	$I_{RRM}$	$V_R = V_{RRM}, T_j = 150^\circ\text{C}$	—	—	8	mA
Forward Voltage Drop	$V_{FM}$	$I_F = 50\text{A}$	—	—	1.5	Volts
Thermal Resistance (Junction-to-Fin)	$R_{th(j-f)}$	Per Diode	—	—	1.7	$^\circ\text{C/W}$
<b>IGBT Inverter Sector</b>						
Collector Cutoff Current	$I_{CES}$	$V_{CE} = V_{CES}, V_{GE} = 0\text{V}$	—	—	1	mA
Gate-Emitter Threshold Voltage	$V_{GE(th)}$	$V_{CE} = 10\text{V}, I_C = 5.0\text{mA}$	4.5	6.0	7.5	Volts
Gate-Emitter Cutoff Current	$I_{GES}$	$V_{GE} = V_{GES}, V_{CE} = 0\text{V}$	—	—	0.5	$\mu\text{A}$
Collector-Emitter Saturation Voltage	$V_{CE(sat)}$	$V_{GE} = 15\text{V}, I_C = 50\text{A}, T_j = 25^\circ\text{C}$	—	2.2	2.8	Volts
		$V_{GE} = 15\text{V}, I_C = 50\text{A}, T_j = 150^\circ\text{C}$	—	—	—	Volts
Input Capacitance	$C_{ies}$		—	—	5.0	nF
Output Capacitance	$C_{oes}$	$V_{GE} = 0\text{V}, V_{CE} = 10\text{V}$	—	—	3.8	nF
Reverse Transfer Capacitance	$C_{res}$		—	—	1.0	nF
Total Gate Charge	$Q_G$	$V_{CC} = 300\text{V}, I_C = 50\text{A}, V_{GE} = 15\text{V}$	—	150	—	nC
Resistive	Turn-on Delay Time	$V_{GE1} = V_{GE2} = 15\text{V},$ $V_{CC} = 300\text{V}, I_C = 50\text{A},$ $R_g = 13\Omega,$	—	—	120	nS
	Rise Time		$t_r$	—	—	300
Switching	Turn-off Time	Resistive Load	—	—	200	nS
	Fall Time		$t_f$	—	—	300
Emitter-Collector Voltage	$V_{EC}$	$I_E = 50\text{A}, V_{GE} = 0\text{V}$	—	—	2.8	Volts
Reverse Recovery Time	$t_{rr}$	$I_E = 50\text{A}, V_{GE} = 0\text{V},$	—	—	110	nS
Reverse Recovery Charge	$Q_{rr}$	$di_E/dt = -100\text{A}/\mu\text{s}$	—	0.14	—	$\mu\text{C}$
Thermal Resistance (Junction-to-Fin)	$R_{th(j-f)}$	Per IGBT	—	—	1.2	$^\circ\text{C/W}$
		Per FWDi	—	—	1.9	$^\circ\text{C/W}$

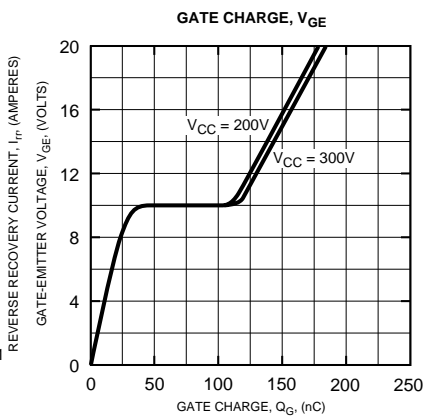
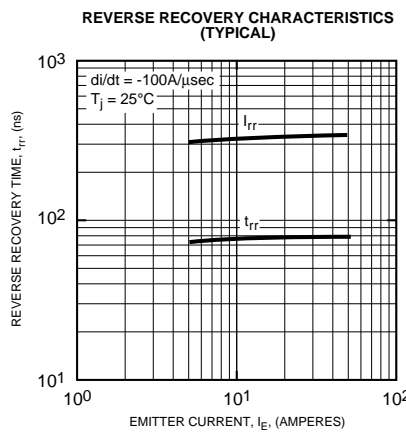
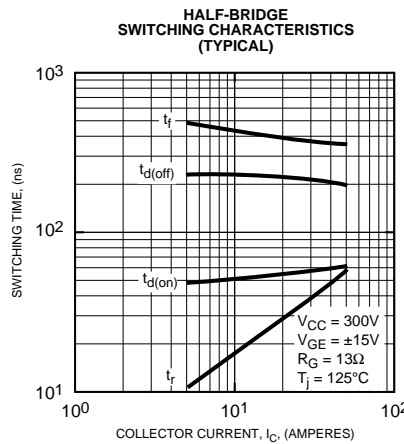
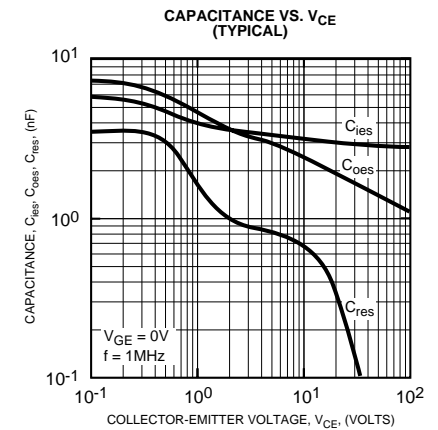
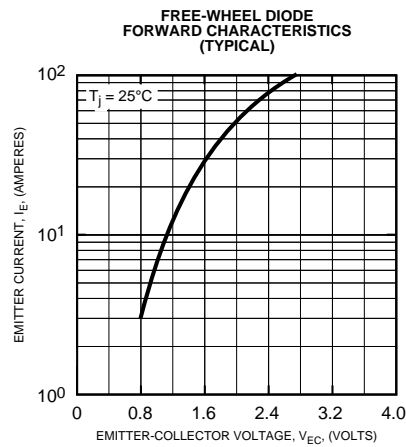
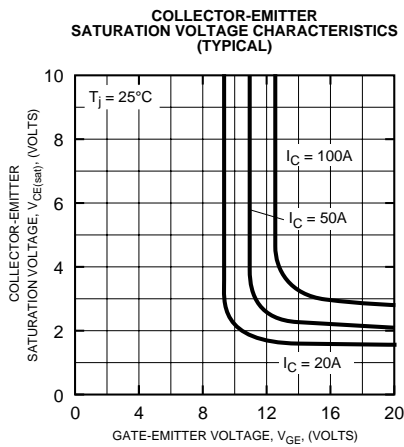
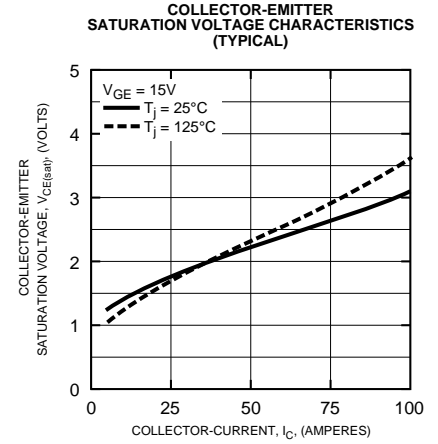
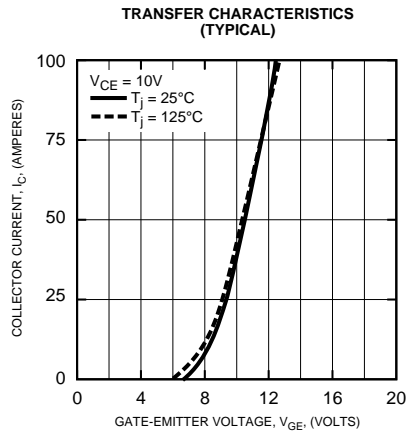
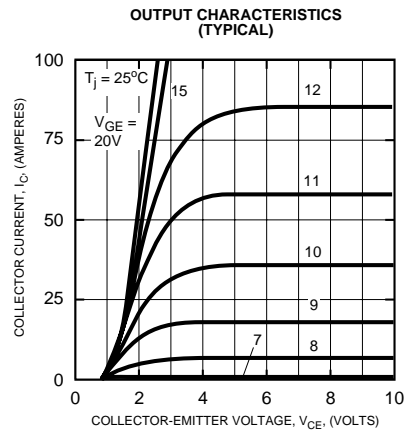
\* Pulse width and repetition rate should be such that device junction temperature does not exceed maximum rating.

\*\* Characteristics of the anti-parallel emitter-collector free-wheel diode.



Powerex, Inc., 200 Hillis Street, Youngwood, Pennsylvania 15697-1800 (724) 925-7272

**CM50MD1-12H**  
**CI Module**  
**Three Phase Converter + Three Phase Inverter**  
**50 Amperes/600 Volts**





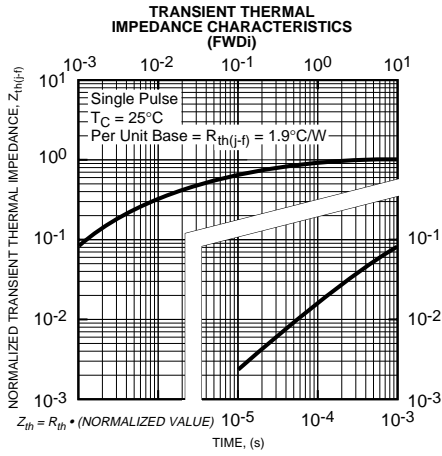
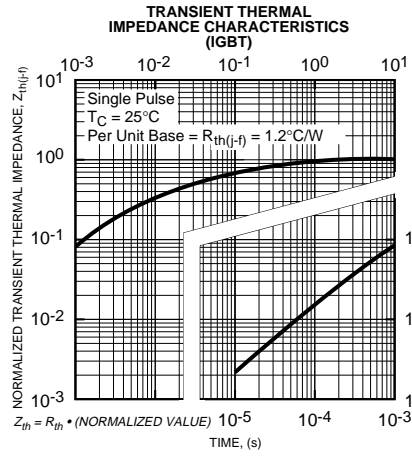
Powerex, Inc., 200 Hillis Street, Youngwood, Pennsylvania 15697-1800 (724) 925-7272

**CM50MD1-12H**

**CI Module**

**Three Phase Converter + Three Phase Inverter**

50 Amperes/600 Volts





LittleDiode supplies new, hard to find or obsolete electronic components and semiconductors all over the world.

With over two million different components listed you are sure to find the part you need.

Feel free to visit us today at our online store:

[LittleDiode.com](http://LittleDiode.com)

Looking forward to providing you with the best possible service.