

# Directional Coupler 0.81–0.96 GHz



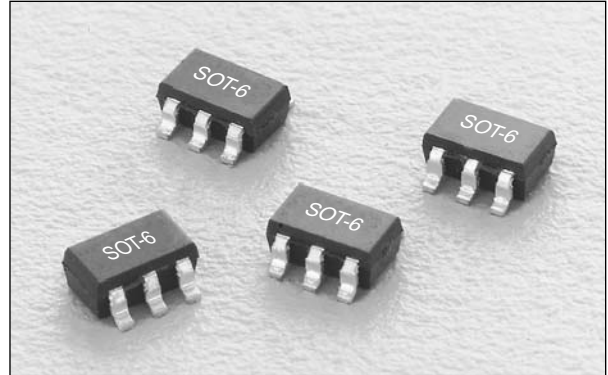
DC08-73

## Features

- Low Cost
- Low Profile
- Small SOT-6 Package
- Tape & Reel

## Description

The DC08-73 is a monolithic directional coupler tailored to the 0.81–0.96 GHz band. It offers low loss, good isolation, good input/output matching and exceptional coupling repeatability. It may be used at higher frequencies when stronger coupling is required. It is available in the SOT-6 leaded surface mount package.

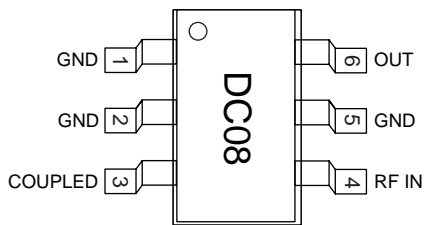


## Electrical Specifications at 25°C

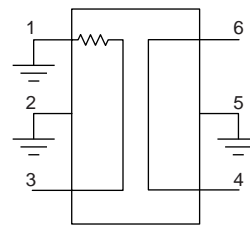
Parameter	Min.	Typ.	Max.	Unit
Frequency	0.81		0.96	GHz
Insertion Loss <sup>1</sup>		.35	.45	dB
Isolation	21	22		dB
Input VSWR		1.05:1	1.3:1	
Output VSWR		1.05:1	1.3:1	
Coupling	14	15	16	dB
Coupled Port VSWR		1.2:1	1.3:1	

1. Coupling loss included.

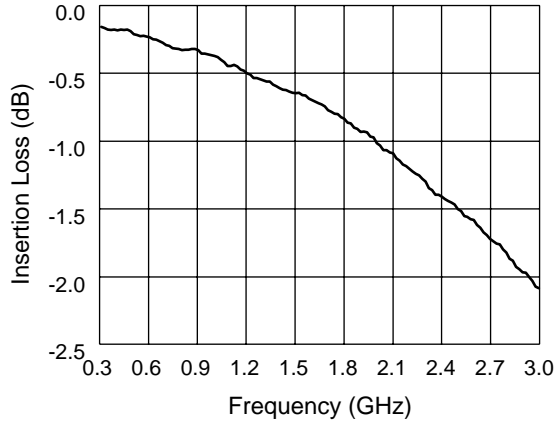
## Pin Out



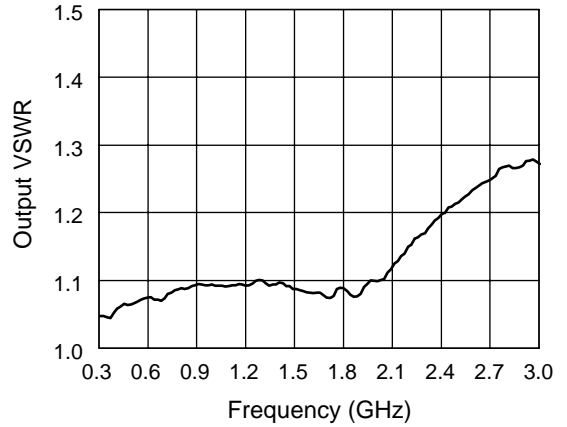
## Block Diagram



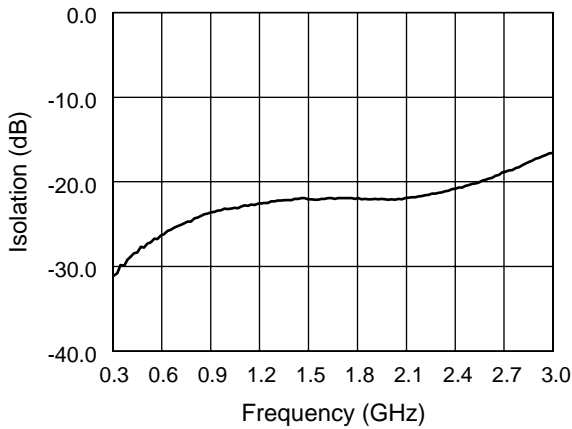
**Typical Performance Data**



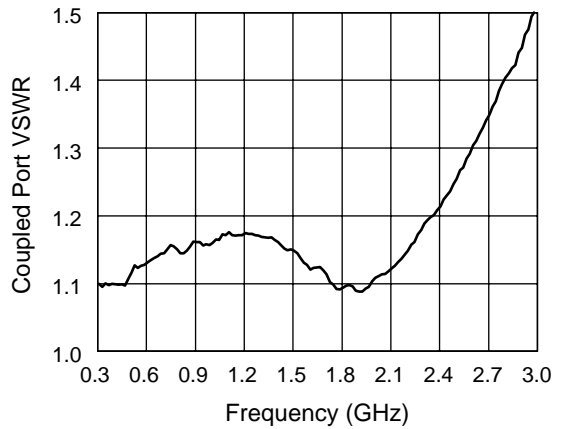
**Insertion Loss vs. Frequency**



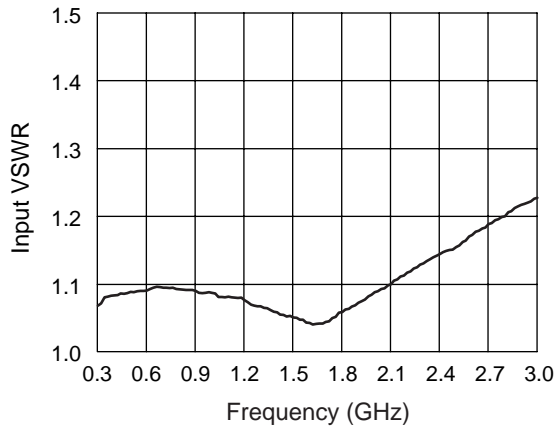
**Output VSWR vs. Frequency**



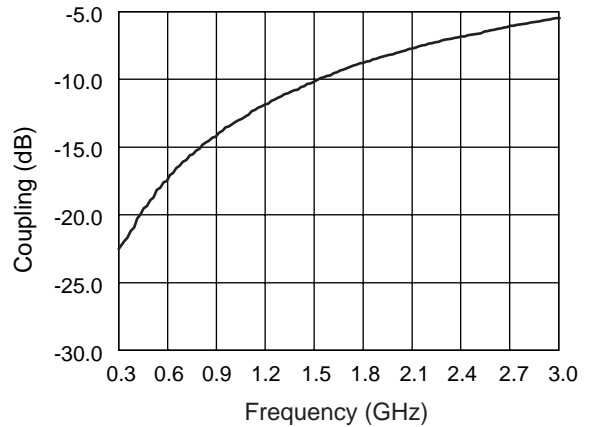
**Isolation vs. Frequency**



**Coupled Port VSWR vs. Frequency**



**Input VSWR vs. Frequency**



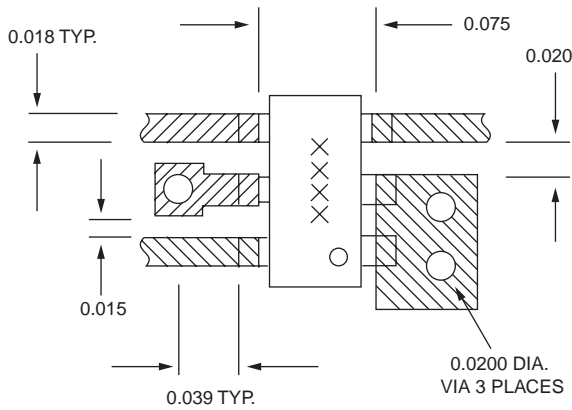
**Coupling vs. Frequency**

### Absolute Maximum Ratings

Characteristic	Value
Input Power	+4 W
Operating Temperature	-40°C to +85°C
Storage Temperature	-65°C to +150°C
Electrostatic Discharge	+125 V

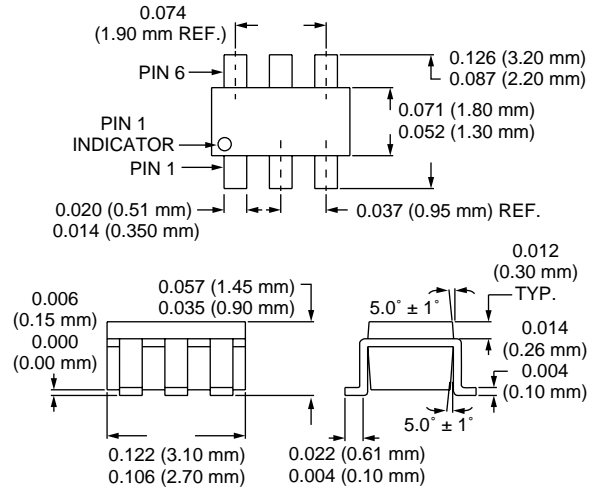
Note: Exceeding these parameters may cause irreversible damage.

### Recommended Board Layout



Material is 10 mil FR4.

### SOT-6





LittleDiode supplies new, hard to find or obsolete electronic components and semiconductors all over the world.

With over two million different components listed you are sure to find the part you need.

Feel free to visit us today at our online store:

[LittleDiode.com](http://LittleDiode.com)

Looking forward to providing you with the best possible service.