

## DS3680 Quad Negative Voltage Relay Driver

### General Description

The DS3680 is a quad high voltage negative relay driver designed to operate over wide ranges of supply voltage, common-mode voltage, and ambient temperature, with 50 mA sink capability. These drivers are intended for switching the ground end of loads which are directly connected to the negative supply, such as in telephone relay systems.

Since there may be considerable noise and IR drop between logic ground and negative supply ground in many applications, these drivers are designed to operate with a high common-mode range ( $\pm 20V$  referenced to negative supply ground). Each driver has a common-mode range separate from the other drivers in the package, which permits input signals from more than one element of the system.

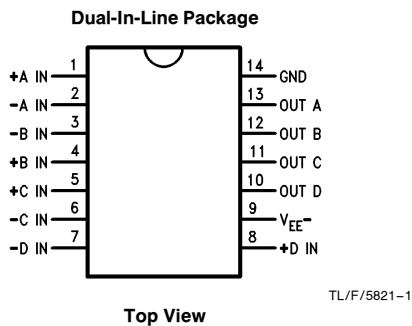
With low differential input current requirements (typically 100  $\mu A$ ), these drivers are compatible with TTL, LS and CMOS logic. Differential inputs permit either inverting or non-inverting operation.

The driver outputs incorporate transient suppression clamp networks, which eliminate the need for external networks when used in applications of switching inductive loads. A fail-safe feature is incorporated to insure that, if the +IN input or both inputs are open, the driver will be OFF.

### Features

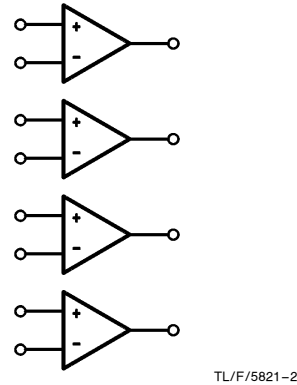
- -10V to -60V operation
- Quad 50 mA sink capability
- TTL/LS/COMS or voltage comparator input
- High input common-mode voltage range
- Very low input current
- Fail-safe disconnect feature
- Built-in output clamp diode

### Connection Diagram



Order Number DS3680J, DS3680M or DS3680N  
See NS Package Number J14A, M14A, N14A

### Logic Diagram



### Truth Table

Differential Inputs	Outputs
$V_{ID} \geq 2V$	On
$V_{ID} \leq 0.8V$	Off
Open	Off

## Absolute Maximum Ratings (Note 1)

If Military/Aerospace specified devices are required, please contact the National Semiconductor Sales Office/Distributors for availability and specifications.

Supply Voltage (GND to $V_{EE-}$ , and Any Pin)	-70V
Positive Input Voltage (Input to GND)	20V
Negative Input Voltage (Input to $V_{EE-}$ )	-5V
Differential Voltage (+IN to -IN)	$\pm 20V$
Inductive Load	$L_L \leq 5h$
	$I_L \leq 50 mA$
Output Current	-100 mA
Storage Temperature	-65°C to +150°C
Maximum Power Dissipation* at 25°C	
Cavity Package	1433 mW
Molded Dip Package	1398 mW
SO Package	1002 mW
Lead Temperature (Soldering, 4 seconds)	260°C

\* Derate cavity package 9.6 mW/°C above 25°C; derate molded dip package 11.2 mW/°C above 25°C; derate SO package 8.02 mW/°C above 25°C.

## Recommended Operating Conditions

	Min	Max	Units
Supply Voltage (GND to $V_{EE-}$ )	-10	-60	V
Input Voltage (Input to GND)	-20	20	V
Logic ON Voltage (+IN)			
Referenced to -IN	2	20	V
Logic OFF Voltage (+IN)			
Referenced to -IN	-20	0.8	V
Temperature Range	-25	+85	°C

## Electrical Characteristics (Notes 2 and 3)

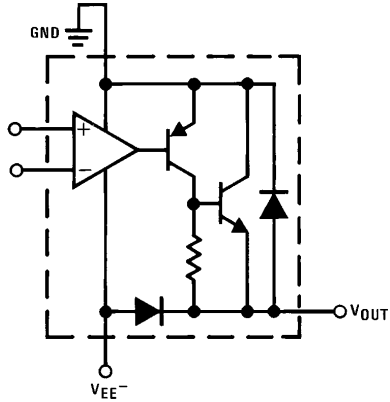
Symbol	Parameter	Conditions	Min	Typ	Max	Units
$V_{IH}$	Logic "1" Input Voltage		2.0	1.3		V
$V_{IL}$	Logic "0" Input Voltage			1.3	0.8	V
$I_{INH}$	Logic "1" Input Current	$V_{IN} = 2V$ $V_{IN} = 7V$		40 375	100 1000	$\mu A$ $\mu A$
$I_{INL}$	Logic "0" Input Current	$V_{IN} = 0.4V$ $V_{IN} = -7V$		-0.01 -1	-5 -100	$\mu A$ $\mu A$
$V_{OL}$	Output ON Voltage	$I_{OL} = 50 mA$		-1.6	-2.1	V
$I_{OFF}$	Output Leakage	$V_{OUT} = V_{EE-}$		-2	-100	$\mu A$
$I_{FS}$	Fail-Safe Output Leakage	$V_{OUT} = V_{EE-}$ (Inputs Open)		-2	-100	$\mu A$
$I_{LC}$	Output Clamp Leakage Current	$V_{OUT} = GND$		2	100	$\mu A$
$V_C$	Output Clamp Voltage	$I_{CLAMP} = -50 mA$ Referenced to $V_{EE-}$		-2	-1.2	V
$V_P$	Positive Output Clamp Voltage	$I_{CLAMP} = 50 mA$ Referenced to GND		0.9	1.2	V
$I_{EE(ON)}$	ON Supply Current	All Drivers ON		-2	-4.4	mA
$I_{EE(OFF)}$	OFF Supply Current	All Drivers OFF		-1	-100	$\mu A$
$t_{PD(ON)}$	Propagation Delay to Driver ON	$L = 1h, R_L = 1k,$ $V_{IN} = 3V$ Pulse		1	10	$\mu s$
$t_{PD(OFF)}$	Propagation Delay to Driver OFF	$L = 1h, R_L = 1k,$ $V_{IN} = 3V$ Pulse		1	10	$\mu s$

**Note 1:** "Absolute Maximum Ratings" are those values beyond which the safety of the device cannot be guaranteed. Except for "Operating Temperature Range", they are not meant to imply that the device should be operated at these limits. The table of "Electrical Characteristics" provides conditions for actual device operation.

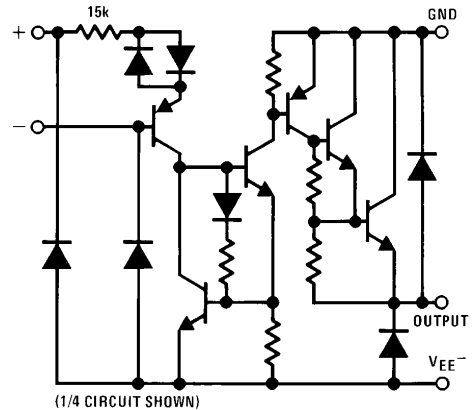
**Note 2:** Unless otherwise specified, the min/max limits of the table of "Electrical Characteristics" apply within the range of the table of "Operating Conditions". All typical values are given for  $V_{EE-} = 52V$ , and  $T_A = 25^\circ C$ .

**Note 3:** All current into device pins shown as positive, out of the device as negative. All voltages are referenced to ground unless otherwise noted.

## Schematic Diagrams

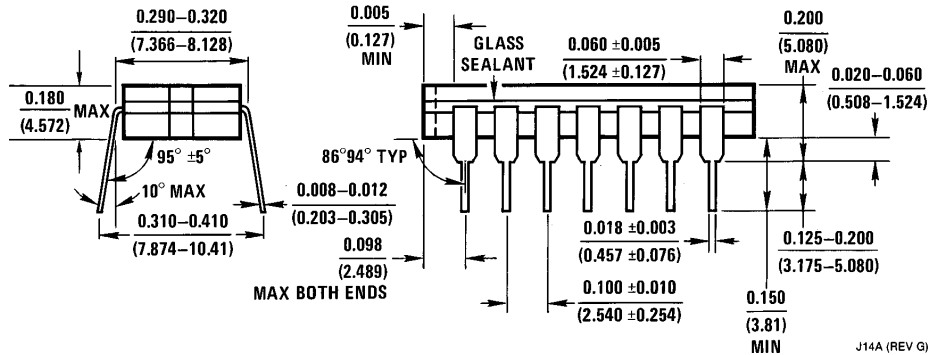
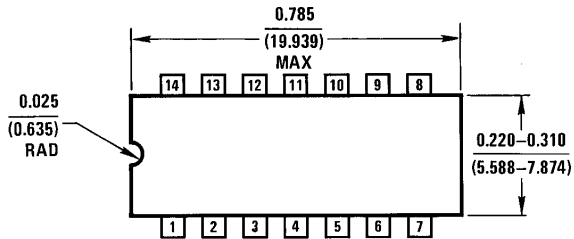


TL/F/5821-3



TL/F/5821-4

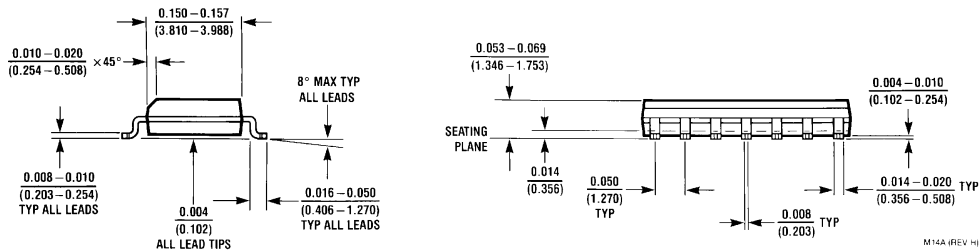
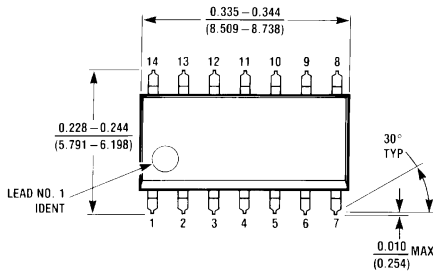
## Physical Dimensions inches (millimeter)



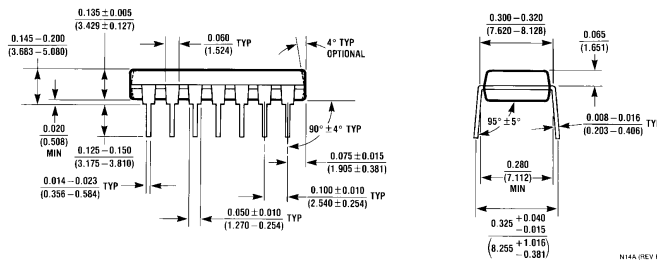
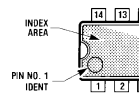
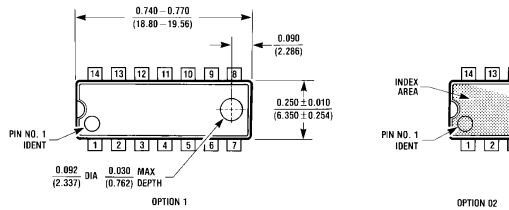
Ceramic Dual-In-Line Package (J)  
Order Number DS3680J  
NS Package Number J14A

J14A (REV G)

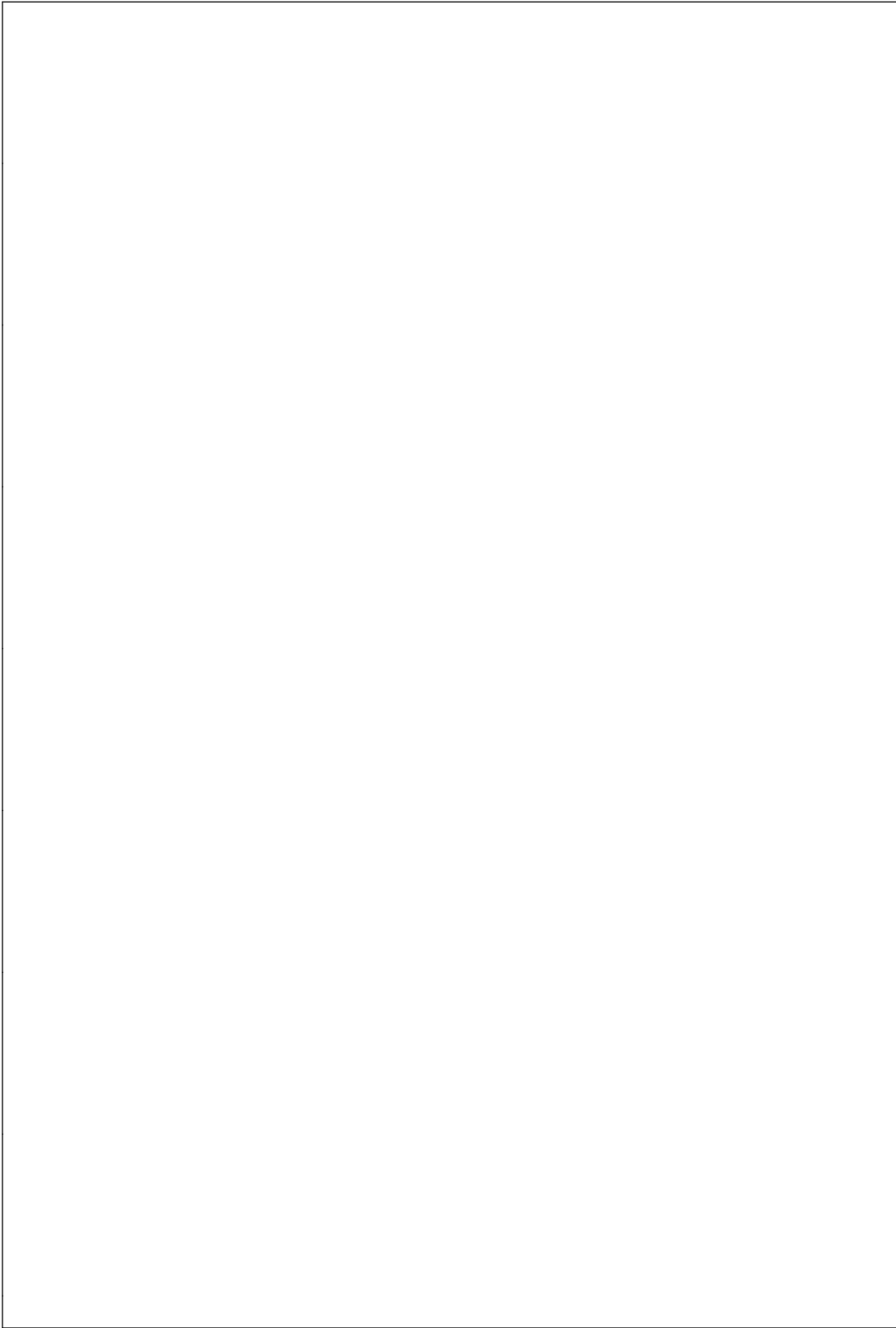
**Physical Dimensions** inches (millimeters) (Continued)



**SO Package (M)**  
**Order Number DS3680M**  
**NS Package Number M14A**



**Molded Dual-In-Line Package (N)**  
**Order Number DS3680N**  
**NS Package Number N14A**



**LIFE SUPPORT POLICY**

NATIONAL'S PRODUCTS ARE NOT AUTHORIZED FOR USE AS CRITICAL COMPONENTS IN LIFE SUPPORT DEVICES OR SYSTEMS WITHOUT THE EXPRESS WRITTEN APPROVAL OF THE PRESIDENT OF NATIONAL SEMICONDUCTOR CORPORATION. As used herein:

1. Life support devices or systems are devices or systems which, (a) are intended for surgical implant into the body, or (b) support or sustain life, and whose failure to perform, when properly used in accordance with instructions for use provided in the labeling, can be reasonably expected to result in a significant injury to the user.
2. A critical component is any component of a life support device or system whose failure to perform can be reasonably expected to cause the failure of the life support device or system, or to affect its safety or effectiveness.



**National Semiconductor Corporation**  
1111 West Bardin Road  
Arlington, TX 76017  
Tel: 1(800) 272-9959  
Fax: 1(800) 737-7018

**National Semiconductor Europe**  
Fax: (+49) 0-180-530 85 86  
Email: [cnjwge@tevm2.nsc.com](mailto:cnjwge@tevm2.nsc.com)  
Deutsch Tel: (+49) 0-180-530 85 85  
English Tel: (+49) 0-180-532 78 32  
Français Tel: (+49) 0-180-532 93 58  
Italiano Tel: (+49) 0-180-534 16 80

**National Semiconductor Hong Kong Ltd.**  
19th Floor, Straight Block,  
Ocean Centre, 5 Canton Rd.  
Tsimshatsui, Kowloon  
Hong Kong  
Tel: (852) 2737-1600  
Fax: (852) 2736-9960

**National Semiconductor Japan Ltd.**  
Tel: 81-043-299-2309  
Fax: 81-043-299-2408

This datasheet has been downloaded from:

[www.DatasheetCatalog.com](http://www.DatasheetCatalog.com)

Datasheets for electronic components.

# National Semiconductor was acquired by Texas Instruments.

[http://www.ti.com/corp/docs/investor\\_relations/pr\\_09\\_23\\_2011\\_national\\_semiconductor.html](http://www.ti.com/corp/docs/investor_relations/pr_09_23_2011_national_semiconductor.html)

This file is the datasheet for the following electronic components:

DS3680J - <http://www.ti.com/product/ds3680j?HQS=TI-null-null-dscatalog-df-pf-null-ww>



LittleDiode supplies new, hard to find or obsolete electronic components and semiconductors all over the world.

With over two million different components listed you are sure to find the part you need.

Feel free to visit us today at our online store:

[LittleDiode.com](http://LittleDiode.com)

Looking forward to providing you with the best possible service.