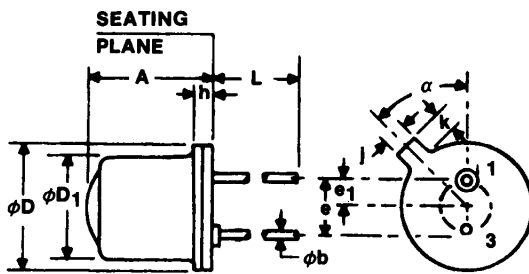


PACKAGE DIMENSIONS



ST1332

SYMBOL	INCHES		MILLIMETERS		NOTES
	MIN.	MAX.	MIN.	MAX.	
A	—	.255	—	6.47	
@b	.016	.021	.407	.533	
@D	.209	.230	5.31	5.84	
@D.	.180	.188	4.57	4.77	
e	.100	NOM.	2.54	NOM.	2
e ₁	.050	NOM.	1.27	NOM.	2
h	—	.030	—	.76	
j	.031	.044	.79	1.11	
k	.036	.046	.92	1.16	1
L	1.00	—	25.4	—	
alpha	45°	45°	45°	45°	3

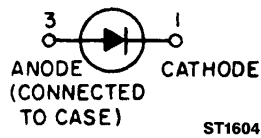
DESCRIPTION

The F5D series is 880nm LEDs in a narrow angle, T0-46 package.

FEATURES

- Good optical to mechanical alignment
- Mechanically and wavelength matched to TO-18 series phototransistor
- Hermetically sealed package
- High irradiance level

PACKAGE OUTLINE



NOTES:

1. MEASURED FROM MAXIMUM DIAMETER OF DEVICE.
2. LEADS HAVING MAXIMUM DIAMETER .021" (.533mm) MEASURED IN GAUGING PLANE .054" + .001" - .000 (1.37 + .025 - .000mm) BELOW THE REFERENCE PLANE OF THE DEVICE SHALL BE WITHIN .007" (.778mm) THEIR TRUE POSITION RELATIVE TO A MAXIMUM WIDTH TAB.
3. FROM CENTERLINE TAB.



AIGaAs INFRARED EMITTING DIODE

ABSOLUTE MAXIMUM RATINGS ($T_A = 25^\circ\text{C}$ Unless Otherwise Specified)	
Storage Temperature	-65°C to +150°C
Operating Temperature	-65°C to +125°C
Soldering:	
Lead Temperature (Iron)	240°C for 5 sec. ^(3,4,5,6)
Lead Temperature (Flow)	260°C for 10 sec. ^(3,4,6)
Continuous Forward Current	100 mA
Forward Current (pw, 10µS; 100 Hz)	3 A
Forward Current (pw, 1µS; 200 Hz)	10 A
Reverse Voltage	3 Volts
Power Dissipation ($T_A = 25^\circ\text{C}$)	170 mW ⁽¹⁾
Power Dissipation ($T_C = 25^\circ\text{C}$)	1.3 W ⁽²⁾

ELECTRICAL CHARACTERISTICS ($T_A = 25^\circ\text{C}$ Unless Otherwise Specified) (All measurements made under pulse conditions.)						
PARAMETER	SYMBOL	MIN.	TYP.	MAX.	UNITS	TEST CONDITIONS
Forward Voltage	V_F	—		1.7	V	$I_F = 100\text{ mA}$
Reverse Leakage Current	I_R	—		10	µA	$V_R = 3\text{ V}$
Peak Emission Wavelength	λ_p		880		nm	$I_F = 100\text{ mA}$
Emission Angle at ½ Power	θ		±10		Degrees	
Total Power F5D1	P_o	12.0		—	mW	$I_F = 100\text{ mA}^{(7)}$
Total Power F5D2	P_o	9.0		—	mW	$I_F = 100\text{ mA}^{(7)}$
Total Power F5D3	P_o	10.5		—	mW	$I_F = 100\text{ mA}^{(7)}$
Rise Time 0-90% of output	t_r		1.5		µS	
Fall Time 100-10% of output	t_f		1.5		µS	

NOTES
<ol style="list-style-type: none"> Derate power dissipation linearly 1.70 mW/°C above 25°C ambient. Derate power dissipation linearly 13.0 mW/°C above 25°C case. RMA flux is recommended. Methanol or Isopropanol alcohols are recommended as cleaning agents. Soldering iron tip 1/16" (1.6 mm) minimum from housing. As long as leads are not under any stress or spring tension. Total power output, P_o, is the total power radiated by the device into a solid angle of 2π steradians.

TYPICAL CHARACTERISTICS

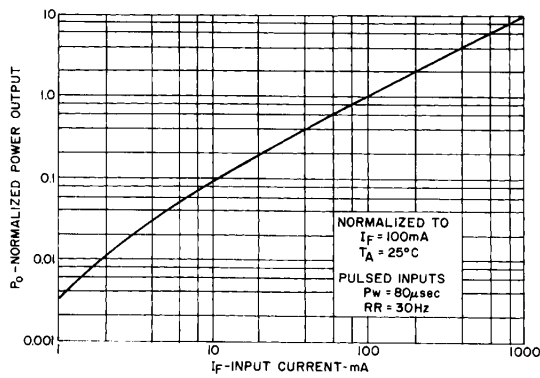


Fig. 1. Power Output vs. Input Current

ST1025

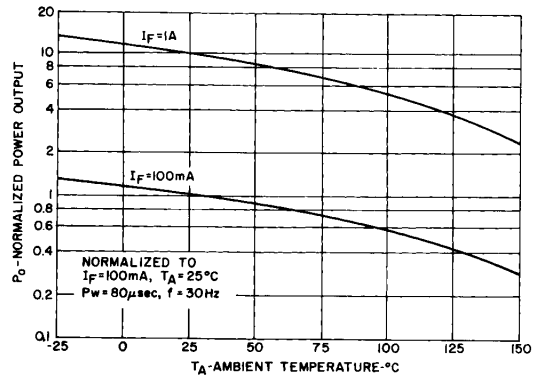


Fig. 2. Power Output vs. Temperature

ST1026

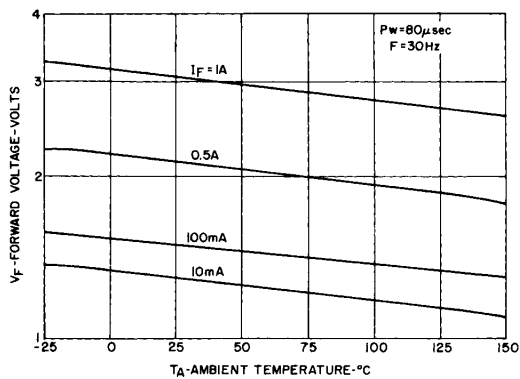


Fig. 3. Forward Voltage vs. Temperature

ST1027

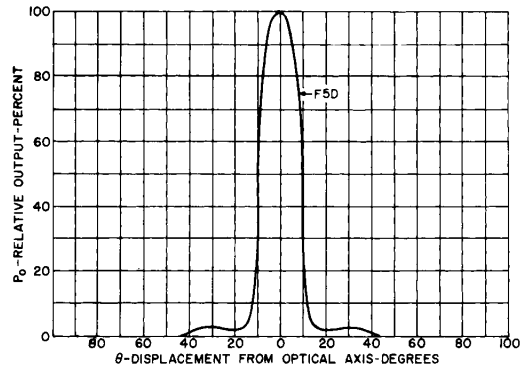


Fig. 4. Typical Radiation Pattern

ST1028-99

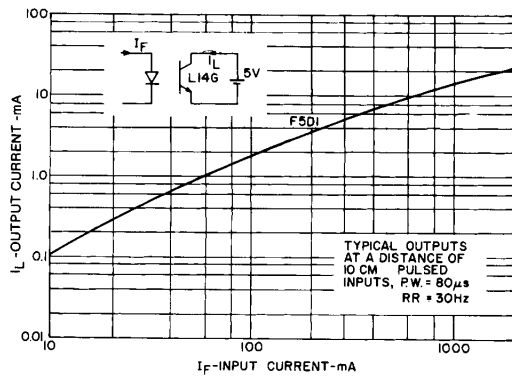


Fig. 5. Output vs. Input with L14G Detector

ST1029-99

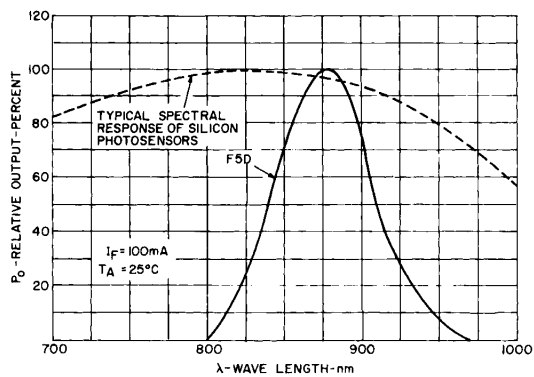


Fig. 6. Output vs. Wavelength

ST1030-99



LittleDiode supplies new, hard to find or obsolete electronic components and semiconductors all over the world.

With over two million different components listed you are sure to find the part you need.

Feel free to visit us today at our online store:

LittleDiode.com

Looking forward to providing you with the best possible service.