

FA7622P(M)

Bipolar IC
For Switching Power Supply Control

■ Description

The FA7622P(M) is a DC-DC converter IC that can directly drive a power MOSFET. This IC has all the necessary protection functions for a power MOSFET. It is optimum for a portable equipment power supply which uses low-voltage input to output comparably large power.

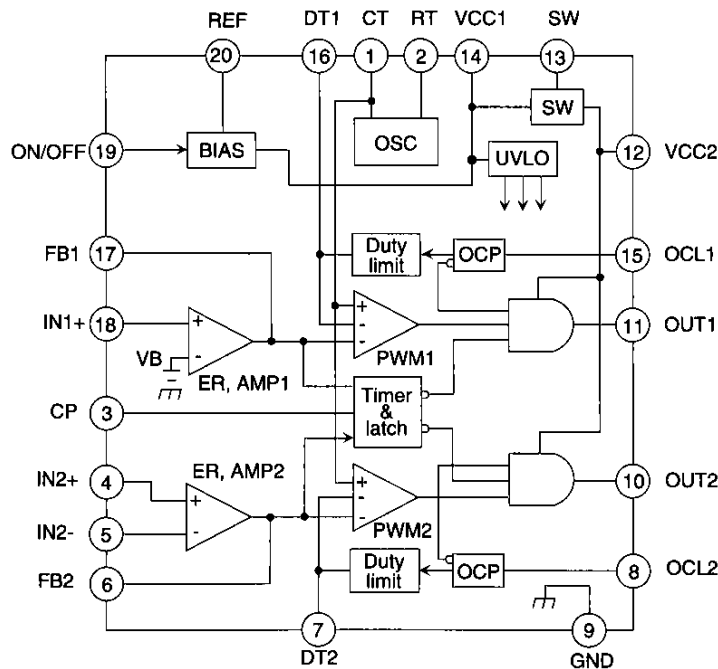
■ Features

- Drive circuit for connecting a power MOSFET ($I_o = \pm 600\text{mA}$)
- Built-in voltage step-up circuit to drive a power MOSFET gate: A converter circuit requires only an N-channel power MOSFET.
- Dual control circuit
- Overcurrent limited circuit
- Overload cutoff circuit with timer and latch circuit
- ON/OFF control pin
- Wide operating range: 3.6 to 28V
- High-frequency operation: up to 1MHz
- 20-pin package (DIP/SOP)

■ Applications

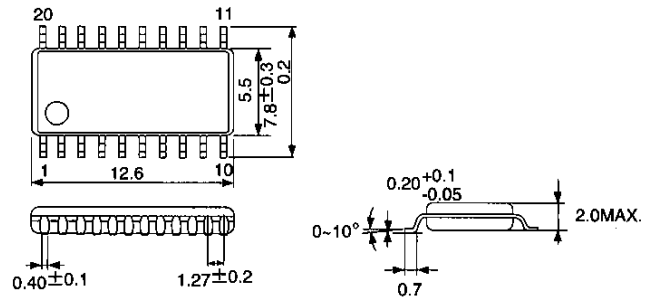
Battery power supply for portable equipment

■ Block diagram

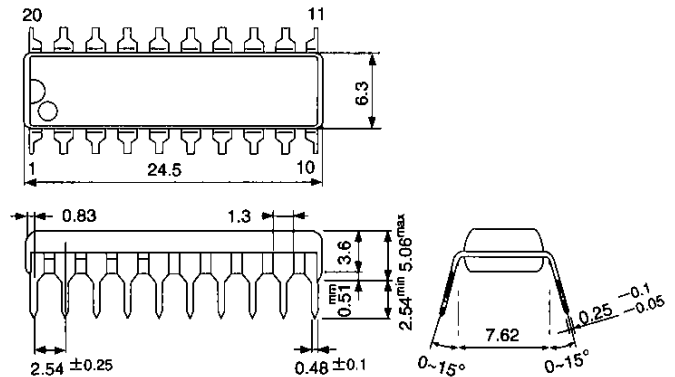


■ Dimensions, mm

• SOP-20



• DIP-20



Pin No.	Pin symbol	Description
1	CT	Oscillator timing capacitor
2	RT	Oscillator timing resistance
3	CP	Timer and latch circuit
4	IN2+	Non-inverting input to error amplifier
5	IN2-	Inverting input to error amplifier
6	FB2	Error amplifier output
7	DT2	Dead time adjustment
8	OCL2	Overcurrent limiting circuit 2
9	GND	Ground
10	OUT2	CH.2 output
11	OUT1	CH.1 output
12	VCC2	Power supply 2
13	SW	Switch for boost circuit
14	VCC1	Power supply 1
15	OCL1	Overcurrent limiting circuit 1
16	DT1	Dead time adjustment
17	FB1	Error amplifier output
18	IN1+	Non-inverting input to error amplifier
19	ON/OFF	Output ON/OFF control
20	REF	Reference voltage output

■ Absolute maximum ratings

Item	Symbol	Rating	Unit	
Supply current	Voltage boost circuit not used	V _{CC1}	28	V
	Voltage boost circuit used	V _{CC1}	20	V
Supply voltage	V _{CC2}	28	V	
ON/OFF pin voltage	V _{ON/OFF}	-0.3 to +7	V	
Out pin output current	I _{OUT}	±600	mA	
Total power dissipation	P _d	650	mW	
Junction temperature	T _j	125	°C	
Operating temperature	T _{opr}	-30 to +85	°C	
Storage temperature	T _{stg}	-40 to +150	°C	

■ Recommended operating conditions

Item	Symbol	Min.	Max.	Unit	
Supply current	Voltage boost circuit not used	V _{CC1}	3.6	26	V
	Voltage boost circuit used	V _{CC1}	3.6	18	V
Feedback resistance	R _{NF}	100		kΩ	
Timing capacitance	C _T	50	2200	pF	
Timing resistance	R _T	10	100	kΩ	
Oscillation frequency	f _{osc}	50	1000	kHz	

■ Electrical characteristics (T_a = 25°C, V_{CC} = 9V, R_T = 47kΩ, C_T = 1000pF)

Reference voltage section

Item	Symbol	Test condition	Min.	Typ.	Max.	Unit
Output voltage	V _{REF}	I _{OR} = 1mA	2.35	2.45	2.55	V
Line regulation	LINE	V _{CC} = 3.6 to 26V, I _{OR} = 1mA		5	15	mV
Load regulation	LOAD	I _{OR} = 0.1 to 1mA		2		mV
Output voltage variation due to temperature change	V _{TC1}	T _a = -30 to +25°C	-1		1	%
	V _{TC2}	T _a = +25 to +85°C	-1		1	%

Oscillator section

Item	Symbol	Test condition	Min.	Typ.	Max.	Unit
Oscillation frequency	f _{OSC}	C _T = 180pF, R _T = 36kΩ	100	110	120	kHz
Frequency variation 1 (due to supply voltage change)	f _{dv}	V _{CC} = 3.6 to 26V		1		%
Frequency variation 2 (due to temperature change)	f _{dT}	T _a = -30 to +25°C		5		%

Error amplifier section (ch. 1)

Item	Symbol	Test condition	Min.	Typ.	Max.	Unit
Reference voltage	V _B		0.815	0.850	0.885	V
Input bias current	I _B			5	100	nA
Open-loop voltage gain	A _{VO}			40		dB
Unity-gain bandwidth	f _T			1.0		MHz
Maximum output voltage	V _{OH}	No load	1.8			V
Output source current	V _{OL}	No load			300	mV
	I _{OH}	V _{OH} = 0V	30	60	90	μA

Error amplifier section (ch. 2)

Item	Symbol	Test condition	Min.	Typ.	Max.	Unit
Input offset voltage	V _{IO}			2	10	mV
Input bias current	I _B			5	100	nA
Common-mode input voltage	V _{COM}		0		1.0	V
Open-loop voltage gain	A _{VO}		70			dB
Unity-gain bandwidth	f _T			1.0		MHz
Maximum output voltage	V _{OH}	No load	1.8			V
Output source current	V _{OL}	No load			300	mV
	I _{OH}	V _{OH} = 0V	40	80	120	μA

Pulse width modulation circuit section (FB1, FB2 pin)

Item	Symbol	Test condition	Min.	Typ.	Max.	Unit
Input threshold voltage	VTH0	Duty cycle = 0%		1.6	1.8	V
Input threshold voltage	VTH1	Duty cycle = 100%	0.8	1.0		V

Dead time adjustment circuit section (DT1, DT2 pin)

Item	Symbol	Test condition	Min.	Typ.	Max.	Unit
Input threshold voltage	VTH0	Duty cycle = 0%		1.6	1.8	V
Input threshold voltage	VTH1	Duty cycle = 100%	0.8	1.0		V
Standby voltage	VSTR	DT1, DT2 pin open	1.8			V

Overcurrent limiting circuit section

Item	Symbol	Test condition	Min.	Typ.	Max.	Unit
Input thresh voltage	VTHOC		180	210	240	mV
Hysteresis voltage	VHYOC			40		mV
Input bias current	I _{OC}			50	100	μA
Delay in OCL	t _{doc}	Overdriving: 50mV		120		ns

Timer and latch circuit section

Item	Symbol	Test condition	Min.	Typ.	Max.	Unit
Latch-mode threshold voltage	VTHCP		1.00	1.25	1.50	V
Input bias current	I _{INCP}	V _{CP} = 1.5V, V _{FB} = 0.3V			1	μA
CP pin voltage / LOW	V _{SATC}	I _{CP} = 20 μA, V _{FB} = 1.0V			300	mV

Output ON/OFF control circuit section

Item	Symbol	Test condition	Min.	Typ.	Max.	Unit
OFF-to-ON threshold voltage	VTHON		3.0			V
ON-to-OFF threshold voltage	V _{TH OFF}				0.60	V
Input bias current	I _{IN}	V _{IN} = 3V		180		μA

Undervoltage lock-out circuit section

Item	Symbol	Test condition	Min.	Typ.	Max.	Unit
OFF-to-ON threshold voltage	VCCON		2.80	3.00	3.20	V
ON-to-OFF threshold voltage	VCCOF			2.90		V
Voltage hysteresis	VHYS			0.10		V

Output section

Item	Symbol	Test condition	Min.	Typ.	Max.	Unit
Saturation voltage (H level)	V _{SAT+}	I _O = -50mA		1.50	2.00	V
Saturation voltage (L level)	V _{SAT-}	I _O = 50mA		1.70	2.20	V

Voltage step-up circuit section

Item	Symbol	Test condition	Min.	Typ.	Max.	Unit
Output voltage	V _{OU} P	L=330μH, C=1μF, No load	10.5	12.5	14.0	V

Overall device

Item	Symbol	Test condition	Min.	Typ.	Max.	Unit
Stand-by supply current	I _{CCST}	Out pin open		0.1	10	μA
Operating V _{CC1} current	I _{CC1}	Normal operation		3.8	5.5	mA
Operating V _{CC2} current	I _{CC2}	Normal operation V _{CC2} =12V OUT1, OUT2 open Duty cycle=50%		1.5	2.2	mA

Explanation of circuits

1. Oscillator section

This section charges and discharges an external capacitor C_T s. The charge current is determined by the external resistor R_T connected to the IC. By charging and discharging the capacitor, this section provides a 1.0 to 1.6V triangle wave at the C_T pin. The oscillation frequency can be set between 50kHz to 1MHz. The frequency can be calculated approximately as follows:

$$f_{osc} [kHz] = \frac{7.1 \cdot 10^5}{R_T [k\Omega] \cdot C_T [pF]} \dots\dots\dots(1)$$

2. Error amplifier section

Error amplifier ①

As Fig. 3 shows, the inverting input of the error amplifier is connected to the V_B reference voltage (0.85V typ.). The non-inverted input $IN1+$ and output $FB1$ connect to external terminals.

During ordinary operation, the $IN1+$ terminal voltage is almost equal to V_B . The power-supply output V_{OUTA} can be determined as follows:

$$V_{OUTA} = \frac{R_1 + R_2}{R_2} \cdot V_B \dots\dots\dots(2)$$

The DC gain of the error amplifier is 40dB (typ.), regardless of external parts connected to the IC. Correct the phase by connecting capacitor C_1 between the V_{OUTA} and $FB1$ pins.

Error amplifier ②

• Voltage step-up or step-down chopper circuit

As Fig. 4 shows, the non-inverting input $IN2+$, inverting input $IN2-$, and output $FB2$ of the error amplifier are connected to external terminals.

The feedback voltage V_{OUTB} to the $IN2+$ pin can be determined as follows:

$$V_{OUTB} = \frac{(R_3 + R_4) \cdot R_6}{R_4 \cdot (R_5 + R_6)} \cdot V_{REF} \dots\dots\dots(3)$$

The DC gain A_v from the V_{OUTB} to $FB2$ pin is 70dB (min) when R_7 is not connected.

When R_7 is connected, the A_v can be determined as follows:

$$A_v = \frac{R_4}{R_3 + R_4} \cdot \left(1 + \frac{R_7 (R_5 \cdot R_6)}{R_5 + R_6} \right) \dots\dots\dots(4)$$

To correct the phase, connect the resistor R_8 and capacitor C_2 in series between the $IN2$ and $FB2$ pins.

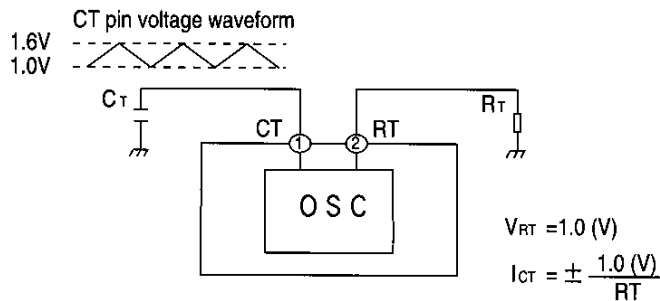


Fig. 1 Oscillator

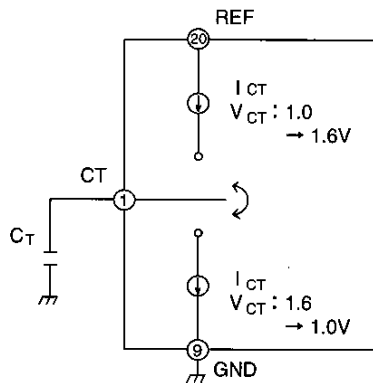


Fig. 2

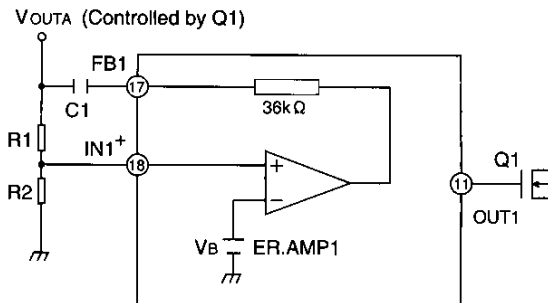


Fig. 3

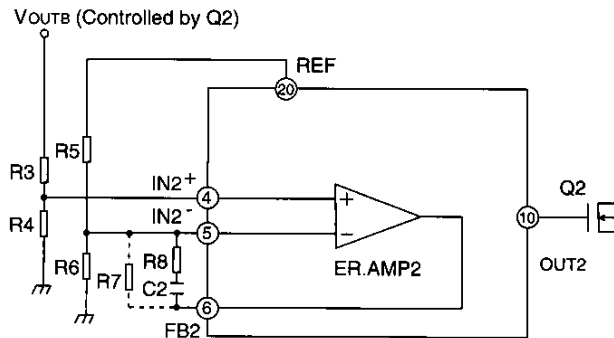


Fig. 4

• **Inverting chopper circuit**

According to the circuit shown in Fig. 5, the power output voltage VOUTB can be determined as follows:

$$V_{OUTB} = - \frac{R_{11}}{R_{10}} \cdot V_{REF} \dots\dots\dots(5)$$

The Av between the VOUTB and FB2 pins can be determined as follows:

$$A_v = \frac{-R_{11}}{R_{12}} \dots\dots\dots(6)$$

To correct the phase, connect the resistor R13 and capacitor C3 in series between the IN2- and FB2 pins.

By using this circuit, invert the output polarity of OUT2 with an external transistor to drive a P-channel MOSFET (or PNP transistor).

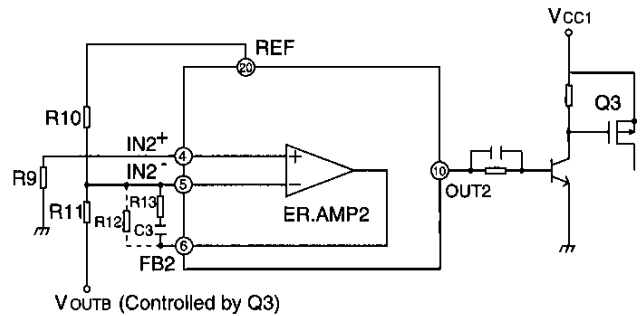


Fig. 5

3. PWM comparator section

As Fig. 6 shows, a PWM comparator has three input terminals. PWM comparator 1 determines the duty cycle of the output from the OUT1 pin. This comparator compares the CT oscillator Voltage (Pin 1) with the FB1 voltage (Pin 17) or the DT1 voltage (Pin 16), whichever is greater. When the highest of these voltages is lower than the CT voltage, the PWM output is high. When it is higher than CT, the PWM output is low.

PWM comparator 2 determines the duty cycle of the output from the OUT2 pin. To determine the PWM output, this comparator compares the CT oscillator voltage (Pin 1) with the FB2 voltage (Pin 6) or the DT2 voltage (Pin 7) whichever is higher.

During ordinary operation, the OUT1 and OUT2 pin voltages have the same polarity as the output from each comparator. When the power supply is turned on, the pulse width gradually increases. The time constant for soft-start is determined by the external resistor and capacitor across pins 16 and 7. In Figures 7 and 8, the time ts required for the pulse width (duty-cycle) to reach about 30% after start-up can be determined as follows:

(Units: μF for Cs and kΩ for Rs, Rs1, and Rs2)

Fig.7:
 $ts \text{ (ms)} = 0.54Cs \cdot Rs \dots\dots\dots(7)$

Fig.8:
 $ts \text{ (ms)} = Cs \left(\frac{Rs1 \cdot Rs2}{Rs1 + Rs2} \right) \cdot \ln \left(\frac{Rs1}{0.417Rs1 - 0.853 Rs2} \right) \dots\dots\dots(8)$

Where, $Rs1 / Rs2 > 0.716$

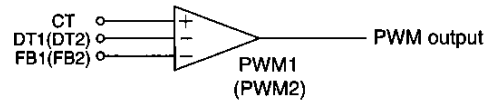
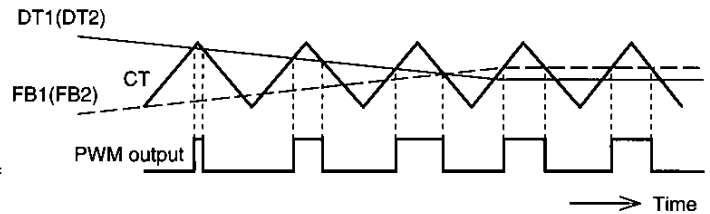


Fig. 6

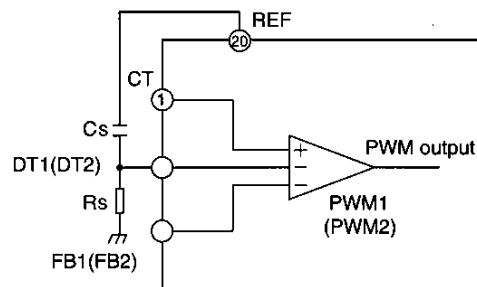


Fig. 7

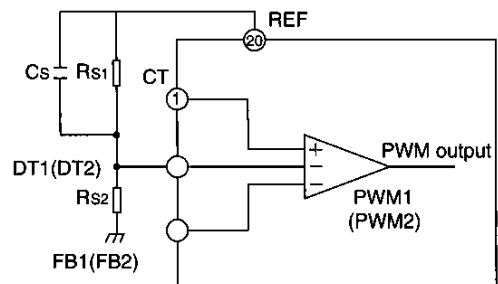


Fig. 8

4. Timer and latch circuit for overload protection

Figure 9 shows the timer and latch circuit for overload protection and Fig. 10 shows its timing during an overload. If the power supply output decreases due to an overload, the error amplifier output decreases. If the voltage decreases to less than 0.3V, the switch that clamped the CP pin voltage to the ground disconnects. This charges capacitor Cp from the REF pin through the resistor Rcp. The CP pin voltage increases. When the voltage reaches 1.25V, OUT1 (OUT2) voltage is clamped to ground.

The N-channel MOSFET (or NPN transistor) connected to the OUT1 (or OUT2) is turned OFF and cuts off the power supply.

The time t_L from when the circuit is overloaded until the power supply is cut off can be determined as follows:

$$t_L \text{ (ms)} = 0.67C_P \text{ (\mu F)} \cdot R_{CP} \text{ (k}\Omega) \dots\dots\dots(9)$$

5. Overcurrent limiting circuit

This is a pulse-by-pulse overcurrent limiting circuit which detects and limits the peak of each drain current pulse from the main switching transistor (MOSFET).

Figure 11 shows the overcurrent limiting circuit and Fig. 12 shows its timing.

This circuit detects a drain current with a voltage sampling resistor R_s . If a voltage lower than the V_{CC1} pin voltage by 210mV or more is input to OCL1 (OCL2), the OUT1 (OUT2) is clamped to ground. At the same time, DT1 (DT2) is raised to the reference voltage V_{REF} . (This reduces the duty-cycle to 0%)

This circuit has hysteresis to prevent threshold noise from causing malfunction.

The current is limited to 210mV (typ.) and released at 170mV (typ).

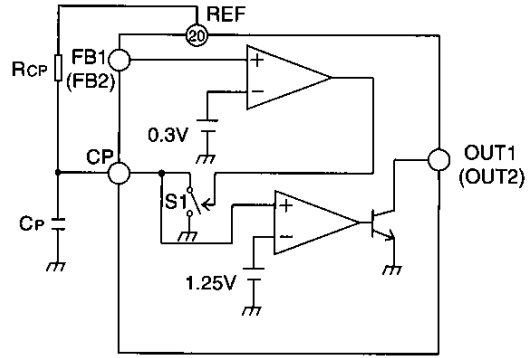


Fig. 9

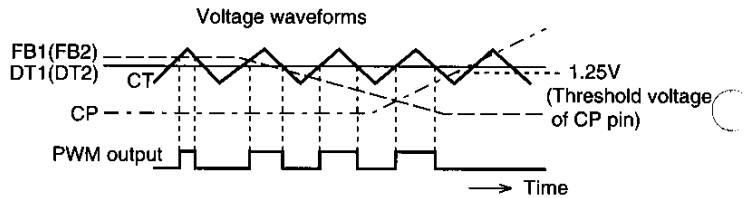


Fig. 10

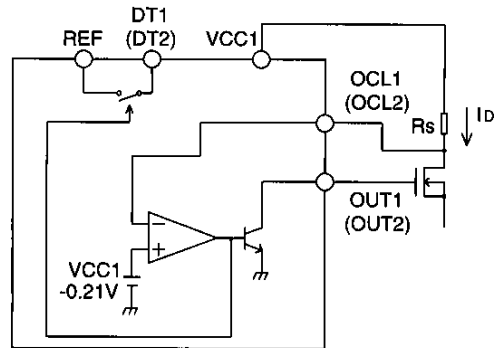


Fig. 11

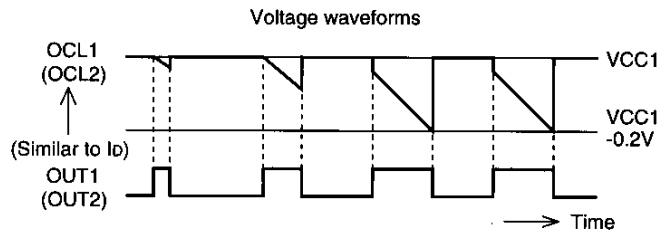


Fig. 12

6. IC ON/OFF control circuit

This control circuit turns the entire IC ON or OFF by an external signal using an ON/OFF control pin to limit the IC's current consumption to $10\mu\text{A}$ or less.

Figure 13 shows the IC ON/OFF control circuit and Fig. 14 shows its timing.

To turn the IC OFF, this circuit clamps OUT1 (OUT2) to ground when the ON/OFF pin voltage is controlled to less than 0.60V . The internal bias current is cut off to turn off the switching transistor.

To turn the IC ON, raise the ON/OFF pin voltage immediately to 3.0V or more to gradually charge the soft-start capacitor.

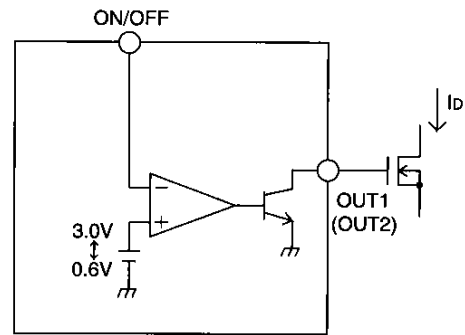


Fig. 13

7. Voltage boost circuit

By using the circuit shown in Fig. 15, this IC generates a voltage 6.5V (typ.) higher than the VCC1 input voltage at the VCC2 pin. This circuit allows the IC to drive MOSFET gates directly. With this circuit, the IC can drive a low-level side N-channel MOSFET at 3.6 to 18V (not possible with conventional ICs). In addition, an N-channel MOSFET can be used on the high-level side of a buck chopper. In Fig. 15, the inductor (L) is about $100\mu\text{H}$ or more and the capacitor (Cup) should be greater than about $0.1\mu\text{F}$.

If voltage boost is not necessary, connect the VCC1 and VCC2 pins directly, and SW pin must be opened.

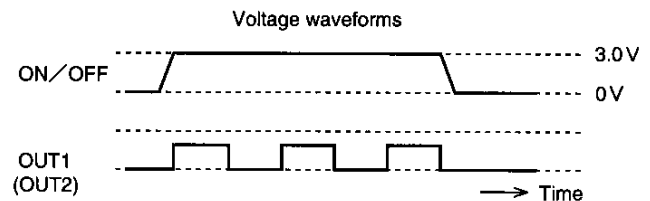


Fig. 14 Control of output

8. Undervoltage lock-out circuit

This circuit prevents a malfunction at a low supply voltage. When the supply voltage VCC1 rises and reaches 3.0V , this circuit is activated. When VCC1 drops below 2.9V , this circuit clamps OUT1 (OUT2) to ground. The CP pin voltage is reset to low by means of cutting off a power supply input.

9. Output circuit

As Fig. 17 shows, OUT1 and OUT2 with a totempole structure can drive a MOSFET.

Since both the maximum output source and sink currents are 600mA , a MOSFET can be switched at high speed.

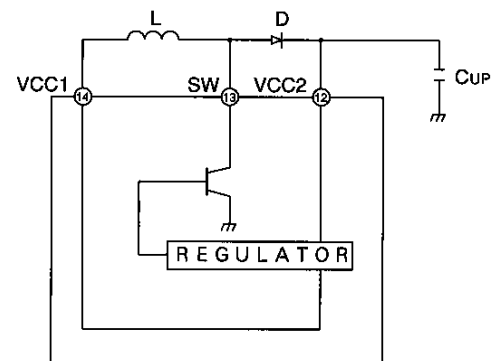


Fig. 15

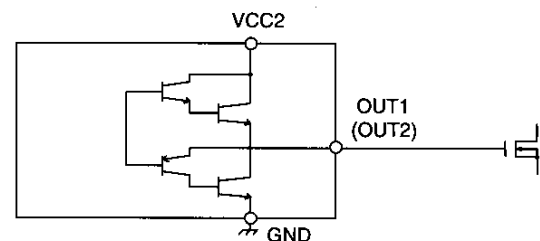
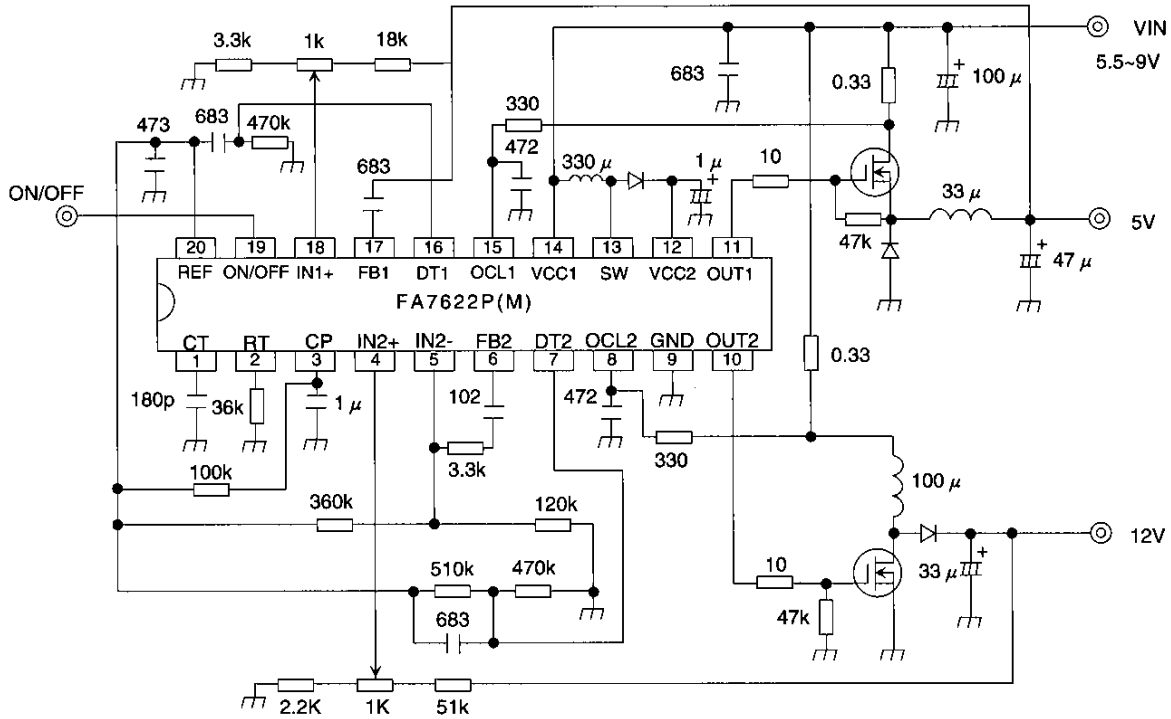


Fig. 16

■ Application circuit



Parts tolerances characteristics are not defined in the circuit design sample shown above. When designing an actual circuit for a product, you must determine parts tolerances and characteristics for safe and economical operation.

CAUTION

1. This Data Book contains the product specifications, characteristics, data, materials, and structures as of July 1995. The contents are subject to change without notice for specification changes or other reasons. When using a product listed in this Data Book, be sure to obtain the latest specifications.
2. All applications described in this Data Book exemplify the use of Fuji's products for your reference only. No right or license, either express or implied, under any patent, copyright, trade secret or other intellectual property right owned by Fuji Electric Co., Ltd. is (or shall be deemed) granted. Fuji makes no representation or warranty, whether express or implied, relating to the infringement or alleged infringement of other's intellectual property rights which may arise from the use of the applications described herein.
3. Although Fuji Electric is enhancing product quality and reliability, a small percentage of semiconductor products may become faulty. When using Fuji Electric semiconductor products in your equipment, you are requested to take adequate safety measures to prevent the equipment from causing a physical injury, fire, or other problem if any of the products become faulty. It is recommended to make your design fail-safe, flame retardant, and free of malfunction.
4. The products introduced in this Data Book are intended for use in the following electronic and electrical equipment which has normal reliability requirements.
 - Computers • OA equipment • Communications equipment (terminal devices) • Measurement equipment
 - Machine tools • Audiovisual equipment • Electrical home appliances • Personal equipment • Industrial robots etc.
5. If you need to use a product in this Data Book for equipment requiring higher reliability than normal, such as for the equipment listed below, it is imperative to contact Fuji Electric to obtain prior approval. When using these products for such equipment, take adequate measures such as a backup system to prevent the equipment from malfunctioning even if a Fuji's product incorporated in the equipment becomes faulty.
 - Transportation equipment (mounted on cars and ships) • Trunk communications equipment
 - Traffic-signal control equipment • Gas leakage detectors with an auto-shut-off feature
 - Emergency equipment for responding to disasters and anti-burglary devices • Safety devices
6. Do not use products in this Data Book for the equipment requiring strict reliability such as (without limitation)
 - Space equipment • Aeronautic equipment • Atomic control equipment
 - Submarine repeater equipment • Medical equipment
7. Copyright ©1995 by Fuji Electric Co., Ltd. All rights reserved.
No part of this Data Book may be reproduced in any form or by any means without the express permission of Fuji Electric.
8. If you have any question about any portion in this Data Book, ask Fuji Electric or its sales agents before using the product. Neither Fuji nor its agents shall be liable for any injury caused by any use of the products not in accordance with instructions set forth herein.