

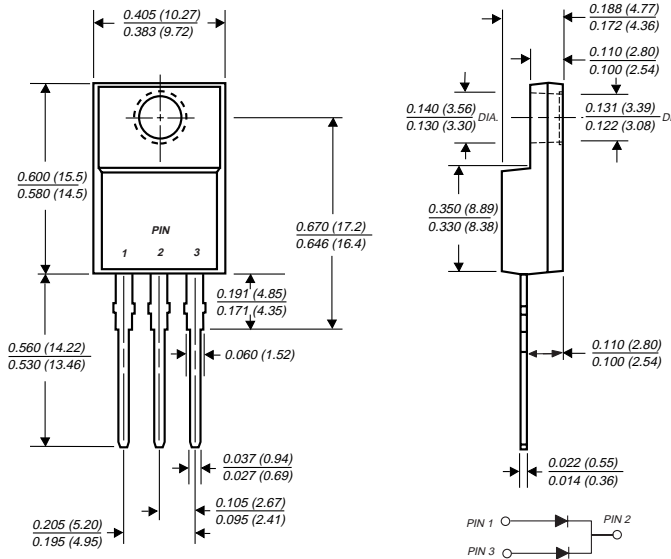
FEPF16AT THRU FEPF16JT

FAST EFFICIENT PLASTIC RECTIFIER

Reverse Voltage - 50 to 600 Volts

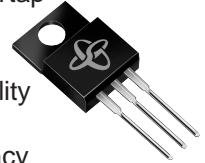
Forward Current - 16.0 Amperes

ITO-220AB



FEATURES

- ◆ Plastic package has Underwriters Laboratory Flammability Classification 94V-0
- ◆ Dual rectifier construction, positive centertap
- ◆ Glass passivated chip junctions
- ◆ Low power loss
- ◆ Low forward voltage, high current capability
- ◆ High surge current capability
- ◆ Superfast recovery times for high efficiency
- ◆ High temperature soldering guaranteed: 250°C, 0.25" (6.35mm) from case for 10 seconds



MECHANICAL DATA

Case: JEDEC ITO-220AB molded plastic body

Terminals: Plated leads solderable per MIL-STD-750, Method 2026

Polarity: As marked

Mounting Position: Any

Weight: 0.08 ounce, 2.24 grams

Mounting Torque: 5 in. - lbs. max.

MAXIMUM RATINGS AND ELECTRICAL CHARACTERISTICS

Ratings at 25°C ambient temperature unless otherwise specified.

	SYMBOLS	FEPF 16AT	FEPF 16BT	FEPF 16CT	FEPF 16DT	FEPF 16FT	FEPF 16GT	FEPF 16HT	FEPF 16JT	UNITS	
Maximum repetitive peak reverse voltage	V _{RRM}	50	100	150	200	300	400	500	600	Volts	
Maximum RMS voltage	V _{RMS}	35	70	105	140	210	280	350	420	Volts	
Maximum DC blocking voltage	V _{DC}	50	100	150	200	300	400	500	600	Volts	
Maximum average forward rectified current at T _C =100°C	I _(AV)	16.0								Amps	
Peak forward surge current 8.3ms single half sine-wave superimposed on rated load (JEDEC Method) at T _C =100°C	I _{FSM}	200.0								Amps	
Maximum instantaneous forward voltage per leg at 8.0A	V _F	0.95			1.3		1.5			Volts	
Maximum DC reverse current at rated DC blocking voltage per leg	I _R	10.0 500.0								μA	
Maximum reverse recovery time (NOTE 1) per leg	t _{rr}	35.0				50.0				ns	
Typical junction capacitance per leg (NOTE 2)	C _J	85.0						60.0			pF
Typical thermal resistance (NOTE 3)	R _{θJC}	5.0								°C/W	
Operating junction and storage temperature range	T _J , T _{STG}	-55 to +150							°C		

NOTES:

- (1) Reverse recovery test conditions: I_F=0.5A, I_R=1.0A, I_{rr}=0.25A
- (2) Measured at 1.0 MHz and applied reverse voltage of 4.0 Volts
- (3) Thermal resistance from junction to case per leg mounted on heatsink

RATINGS AND CHARACTERISTICS CURVES FEPF16AT THRU FEPF16JT

FIG. 1 - FORWARD CURRENT DERATING CURVE

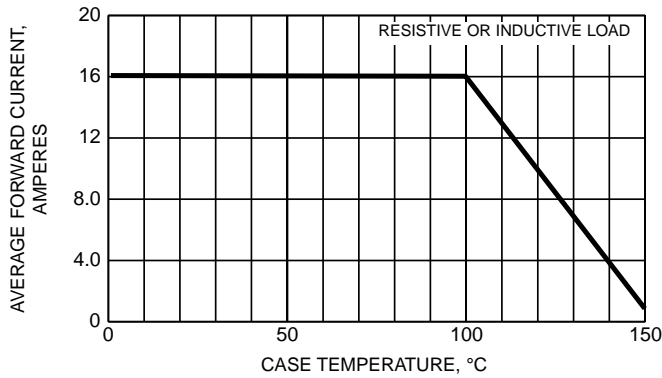


FIG. 2 - MAXIMUM NON-REPETITIVE PEAK FORWARD SURGE CURRENT

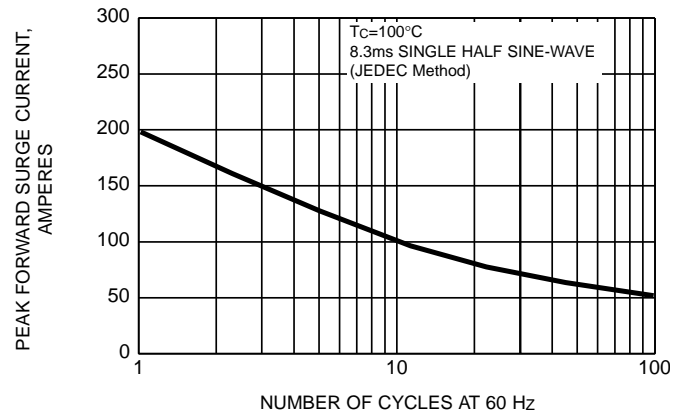


FIG. 3 - TYPICAL INSTANTANEOUS FORWARD CHARACTERISTICS PER LEG

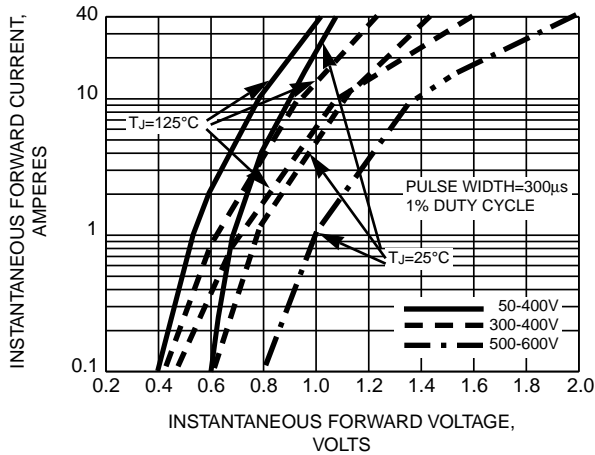


FIG. 4 - TYPICAL REVERSE CHARACTERISTICS PER LEG

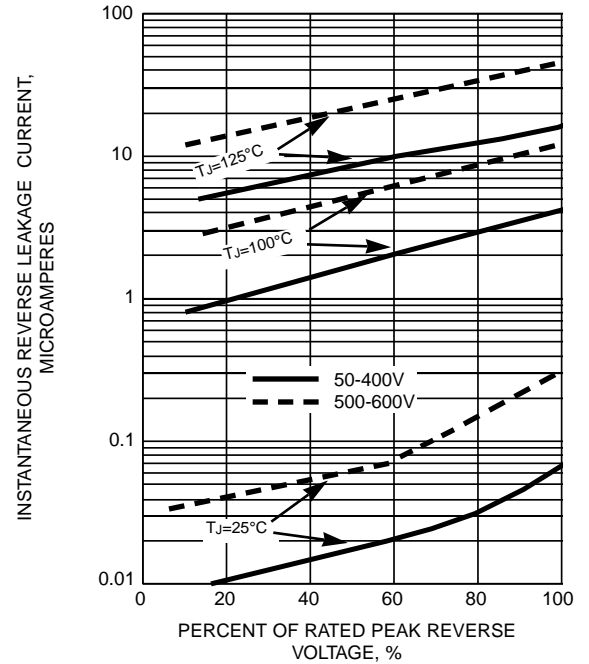
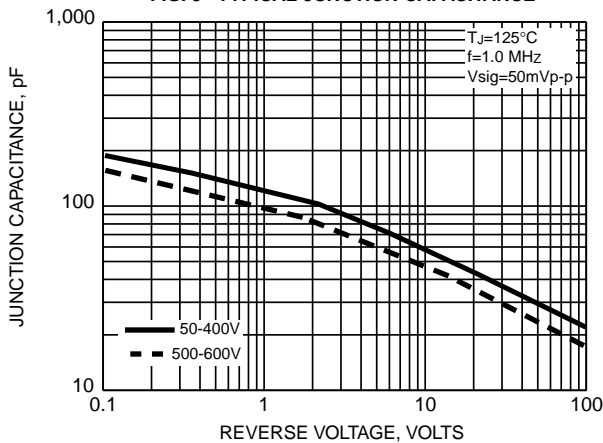


FIG. 5 - TYPICAL JUNCTION CAPACITANCE





LittleDiode supplies new, hard to find or obsolete electronic components and semiconductors all over the world.

With over two million different components listed you are sure to find the part you need.

Feel free to visit us today at our online store:

LittleDiode.com

Looking forward to providing you with the best possible service.