



Data Sheet

FM48™ FiltMod

Input Filter Module



Shown actual size:
2.28 x 1.45 x 0.5 in
57,9 x 36,8 x 12,7 mm

Features

- Low Profile Mounting Option
- EMI Filtering
- 8 and 12 Amp versions
- CE Marked
- Micro Sized Module

Products Highlights

The FM48 input filter module enables designers to meet the conducted emission limits of EN55022 level B and FCC level B when used with Vicor's 48 Volt 2nd Generation of DC-DC converters. FiltMods accept an input voltage of 36 to 76 Vdc with a transient withstand capability of 100Vdc for 100 msec. The FiltMods are packaged in an industry standard "quarter-brick" module measuring 2.28" x 1.45" x 0.5" and are available in either 8 or 12 Ampere capacity. Both versions may be on-board or in-board mounted for height critical applications. The FiltMods can be teamed with Vicor's IAM48 for transient and surge protection.

Compatible Products

- IAM48
- 2nd Generation 48V input DC-DC converters

Part Numbers

- FM4808C11: 8 Amp – Short Pins
- FM4808C12: 8 Amp – Long Pins
- FM4812C11: 12 Amp – Short Pins
- FM4812C12: 12 Amp – Long Pins

FM48-FiltMod Specifications

(typical at $T_{BP} = 25^{\circ}\text{C}$, nominal line, 75% load, unless otherwise specified)

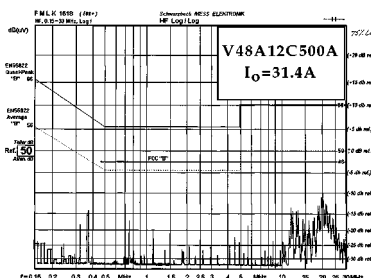
Parameter	Min	Typ	Max	Remarks
Input Voltage	36Vdc	48Vdc	76Vdc	
Safety Approvals	UL 1950, CSA 22.2-950, EN 60950			
Dielectric Withstand	1,500VRMS			Input/Output to Base
EMI/RFI	Bellcore GR-001089-Core Issue 2 EN 55022 Level B FCC Part 15 Level B			When used with Vicor 2nd Generation 48Vin DC-DC converters
Output Current				
FM4808C12			8A	Delivered current to any combination of Vicor's 2nd Generation 48Vin DC-DC Converter
FM4812C12			12A	
Reverse Polarity Protection				No damage to unit, external fusing required
Weight	2.1 Ounces (60 Grams)			

Product Grade Specifications

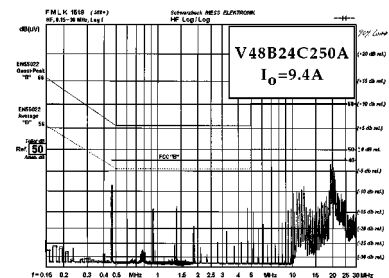
Parameter	C-Grade	T-Grade
Storage Temp.	-40°C to +125°C	-40°C to +125°C
Operating Temp. (Baseplate)	-20°C to +100°C	-40°C to +100°C
Warranty	2 years	2 years

Note: For alternative product grades, change the "C" in the part number to "T".

Conducted Noise



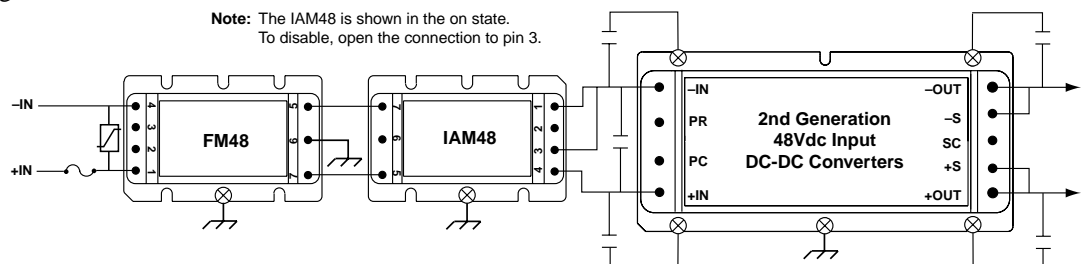
FM4812C12 and Model V48A12C500A DC-DC Converter.



FM4812C12 and Model V48B24C250A DC-DC Converter.

Typical transient, surge protection and filtering solution

Note: The IAM48 is shown in the on state.
To disable, open the connection to pin 3.

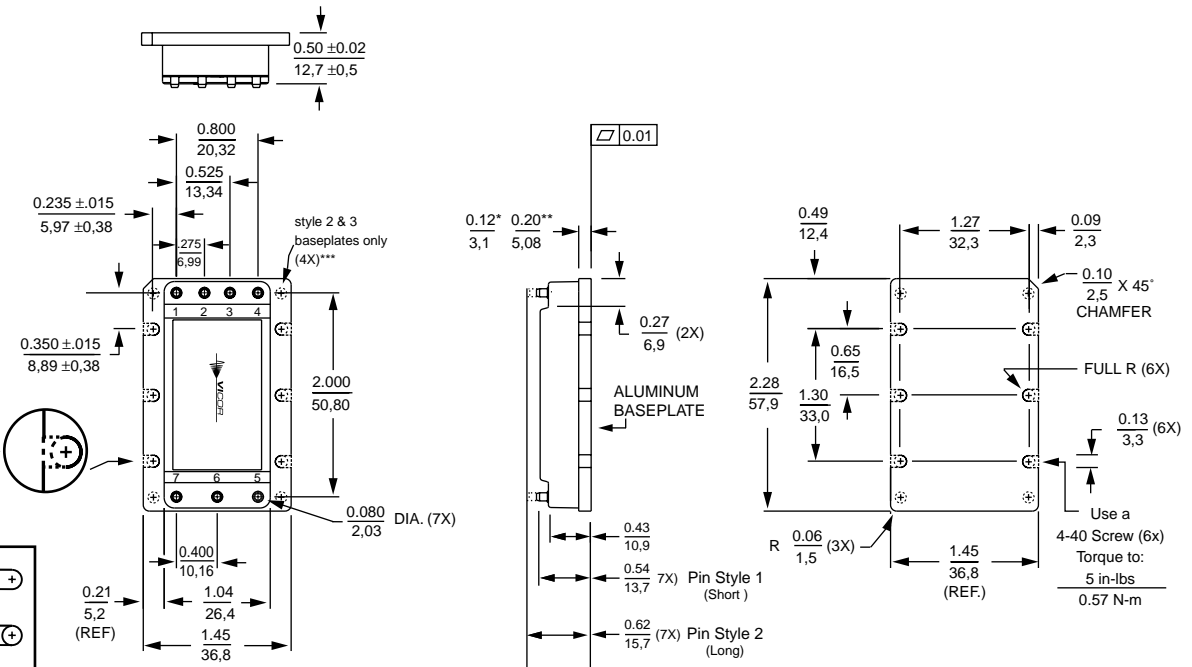
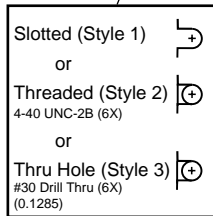


Mechanical Drawings (FM48-FiltMod)

Module Outline

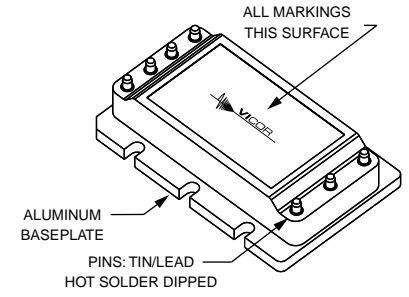
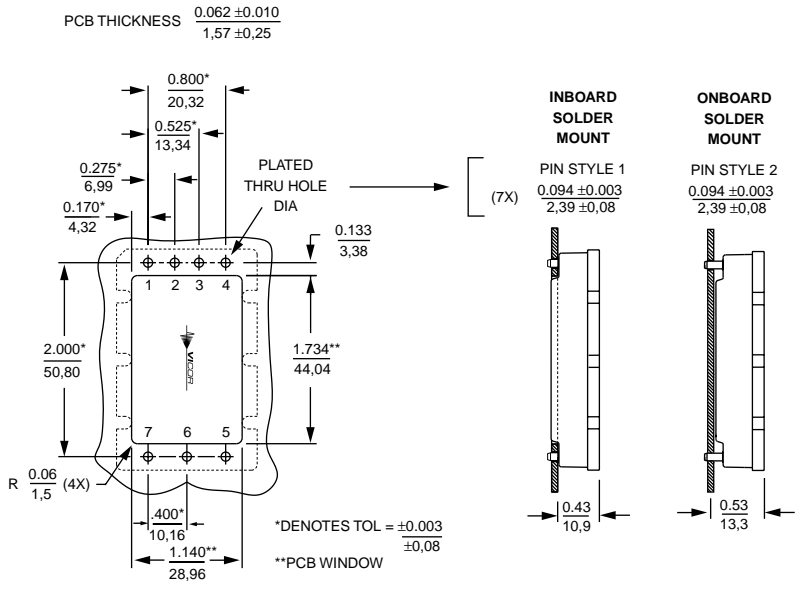
PIN OUTS		
No.	Function	Label
1	+Vin	+V
2	N/C	
3	N/C	
4	-Vin	-V
5	-Vout	-V
6	Ground	GND
7	+Vout	+V

PINS: TIN/LEAD
HOT SOLDER DIP



* Style 1 baseplate only
** Style 2 & 3 baseplates
*** Reserved for Vicor accessories

PCB Mounting Specifications



Unless otherwise specified, dimensions are in inches mm		
Decimals	Tol.	Angles
0.XX	±0.01 ±0.25	±1°
0.XXX	±0.005 ±0.127	

This datasheet has been downloaded from:

www.DatasheetCatalog.com

Datasheets for electronic components.



LittleDiode supplies new, hard to find or obsolete electronic components and semiconductors all over the world.

With over two million different components listed you are sure to find the part you need.

Feel free to visit us today at our online store:

LittleDiode.com

Looking forward to providing you with the best possible service.