

HA13455

Three-Phase Motor Driver with Switching Regulator

Description

The HA13455 three-phase brushless DC motor driver can provide an output current of up to 1.8 A from the switching regulator at up to 1.0 A per phase.

Features

- High-efficiency driver
- Switching regulator output can also be used for other applications.

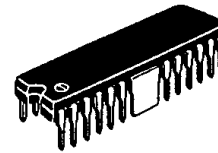
Functions

- 1.0-A three-phase output circuit
- Hall amplifier matrix
- Buffer amplifier
- Control amplifier
- FG amplifier
- 1.8-A switching regulator with output current regulator
- Overtemperature shutdown (OTSD)

Ordering Information

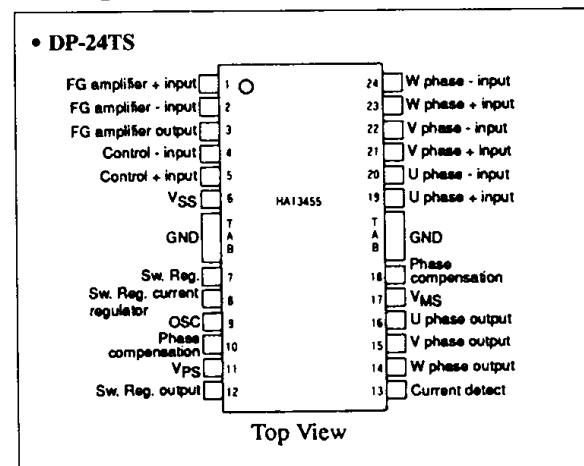
Type No.	Package
HA13455	DP-24TS

HA13455



(DP-24TS)

Pin Assignment



Logic Table

Control Voltage V_{CTL} (@ $V_{ref} = 2.5 V$)	Hall Amplifier input						Output			Notes
	U+	U-	V+	V-	W+	W-	U	V	W	
$V_{CTL} \geq 2.5 V$	L	H	H	L	L	H	H	L	Open	1
	L	H	H	L	H	L	H	Open	L	
	L	H	L	H	H	L	Open	H	L	
	H	L	L	H	H	L	L	H	Open	
	H	L	L	H	L	H	L	Open	H	
	H	L	H	L	L	H	Open	L	H	
$V_{CTL} < 2.5 V$	H	L	H	L	H	L	Short	Short	Short	2
	L	H	L	H	L	H	Short	Short	Short	
$V_{CTL} < 2.5 V$	x	x	x	x	x	x	Open	Open	Open	3
x (Don't care)	Open	Open	Open	Open	Open	Open	Open	Open	Open	4

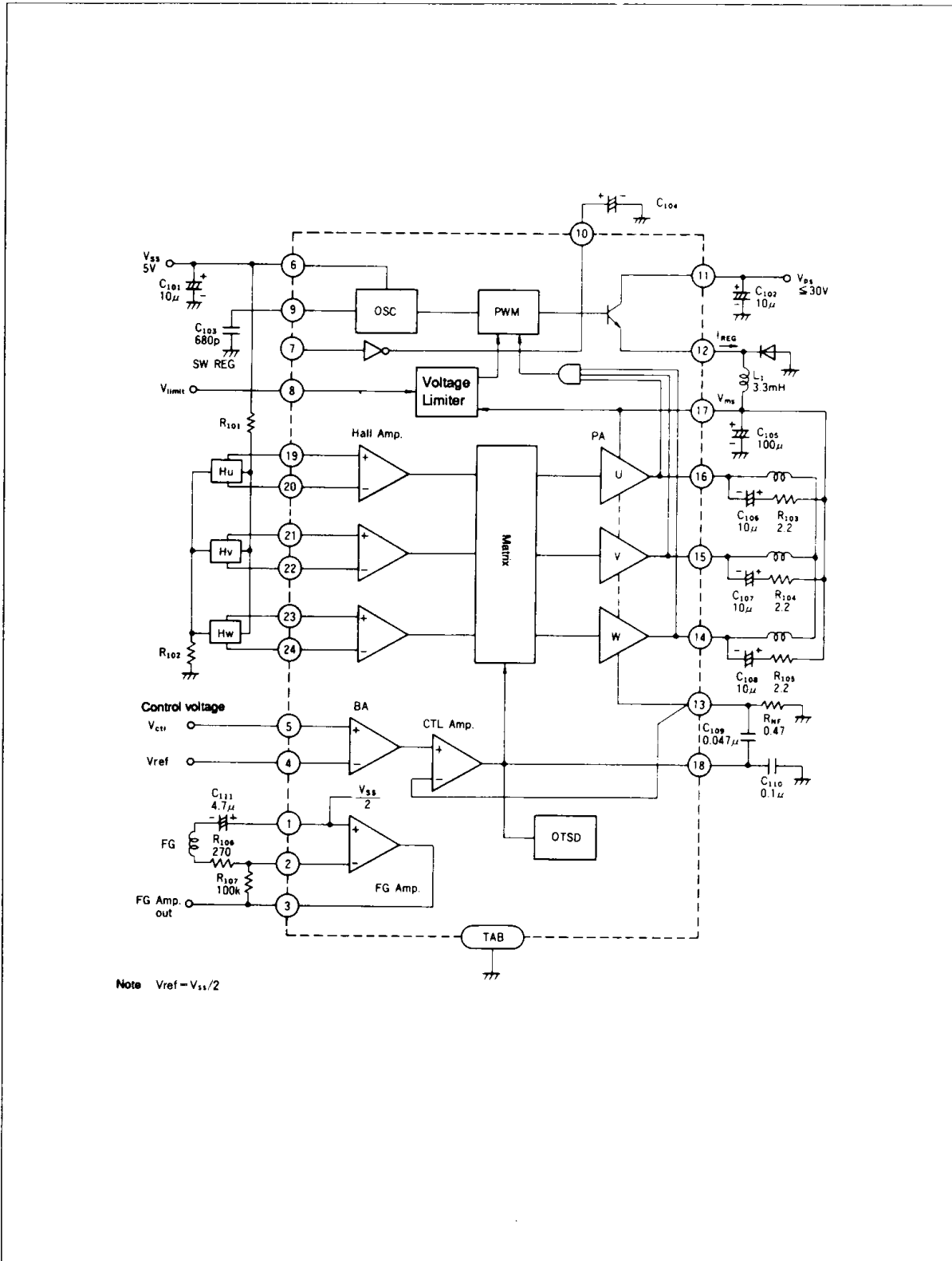
Notes:

1. Control mode
2. Operating in this mode may damage the device
3. Control mode release
4. Hall amplifier open protection mode



HA13455

Block Diagram



Absolute Maximum Ratings (Ta = 25°C)

Parameter	Symbol	Rating	Unit	Notes
Control block power supply voltage	V _{SS}	7	V	1
PA block power supply voltage	V _{MS}	30	V	2
REG block power supply voltage	V _{PS}	30	V	
Input voltage	V _{in}	0 to V _{SS}	V	3
PA output current	I _O	1.0	A	
REG output current	I _{REG}	1.8	A	
Power dissipation	P _T	2.5	W	4
Junction operating temperature	T _j	150	°C	5
Storage temperature	T _{stg}	-55 to +125	°C	

The absolute maximum ratings are limiting values, to be applied individually, beyond which the device may be permanently damaged. Functional operation under any of these conditions is not guaranteed. Exposing a circuit to its absolute maximum rating for extended periods of time may affect the device's reliability.

Notes:

1. The recommended operating voltage range (V_{SS}) is 4.5 to 5.5 V
2. When V_{MS} ≤ V_{PS}
3. For pins 1, 2, 5, 8, and 19–24
4. For T_c = 100°C. Thermal resistance is as follows:
 $\theta_{j-c} \leq 25^\circ\text{C/W}$
 $\theta_{j-a} \leq 60^\circ\text{C/W}$
5. Operating junction temperature (T_{jop}) is -20 to +125°C.

Electrical Characteristics

(Ta = 25°C, V_{SS} = 5 V, V_{PS} = 18 V, V_{MS} = 12 V, V_{ref} = 2.5 V)

Parameter	Symbol	Min	Typ	Max	Unit	Test Conditions	Pins	Notes
Control block	Quiescent current	I _{SS1}	—	—	14	mA	V _{SS} = 5.5 V, V _{CTL} = 0 V	6
		I _{SS2}	—	65	100	mA	V _{SS} = 5.5 V, V _{CTL} = V _{SS} , R _L = Open	
Switching regulator	Quiescent current	I _{PS1}	—	—	1.0	mA	V _{PS} = 30 V, REG off	11
		I _{PS2}	—	—	3	mA	V _{PS} = 30V, REG on	
Output block	Quiescent current	I _{MS1}	—	—	9	mA	V _{MS} = 30 V, V _{CTL} = 0 V	17
		I _{MS2}	—	—	100	mA	V _{MS} = 30 V, V _{CTL} = V _{SS} , R _L = open	
Hall amplifier	Input current	I _{HI}	—	—	+10	μA	V _H = 2.2 V	19–24
	Common mode input voltage	V _H	1.6	—	V _{SS} -2.3	V		
Buffer amplifier	Input current	I _{BI1}	—	—	+10 -200	μA	V _{CTL} = 0 V	5
		I _{BI2}	—	—	±10	μA	V _{CTL} = 1 V to V _{SS}	
	Threshold voltage	V _{TH}	2.4	2.6	2.8	V	V _{I3} = 10 mV	1
	Voltage gain	G _{CTL}	0.7	1.0	1.42	V/V		13 1
Motor driver output block	Leakage current	I _{CER1}	—	—	1.0	mA	V _{CE} = 30 V	14–16
amplifier	Saturation voltage	V _{sat} H1	—	1.2	1.6	V	I _O = 0.5 A	2
		V _{sat} H2	—	1.6	2.5	V	I _O = 1.0 A	
		V _{sat} L1	—	0.5	0.75	V	I _O = 0.5 A	
		V _{sat} L2	—	1.0	2.0	V	I _O = 1.0 A	
	R _{NF} max voltage	V _{NF} max	0.55	0.75	0.95	V		13



HA13455

Electrical Characteristics (cont)

Parameter	Symbol	Min	Typ	Max	Unit	Test Conditions	Pins	Notes
FG amplifier	Bias voltage	V_{FG}	2.3	2.5	2.7	V		1
	Input current	I_{FGI}	—	—	± 10	μA	$V_2 = 2.5 V$	2
	Output current	I_{FGO}	0.15	—	0.35	mA		3
	Output low voltage	V_{OL}	—	—	1.2	V		
	Output high voltage	V_{OH}	4.5	—	—	V		
OSC	Frequency	f_{osc}	35	50	70	kHz		9
	Low level voltage	V_{Hosc}	1.05	1.30	1.55	V		
	High level voltage	V_{Losc}	3.15	3.30	3.45	V		
	Duty cycle	D_{osc}	43	53	63	%		
Switching regulator output block	Leakage current	$I_{CER 2}$	—	—	1.0	mA	$V_{CE} = 30 V$	12
	Saturation voltage	$V_{sat R1}$	—	1.5	2.25	V	$I_{REG} = 1 A$	
$V_{sat R2}$		—	1.8	2.5	V	$I_{REG} = 1.8 A$		
Voltage regulator	Min voltage	$V_{REG min}$	7.2	8.0	8.8	V	$V_{ps} = 30 V$	17
	Max voltage	$V_{REG max}$	7.2	8.0	8.8	V/V	$V_{ps} = 30 V$, $V_B = 1.0 \text{ to } 3.0 V$	
OTSD	Operating temperature	T_{sd}	125	—	—	$^{\circ}C$		

Notes:

- See figure 1.
- V_{satH1} and V_{satH2} are the upper saturation mean voltages. V_{satL1} and V_{satL2} are the lower saturation mean voltages.

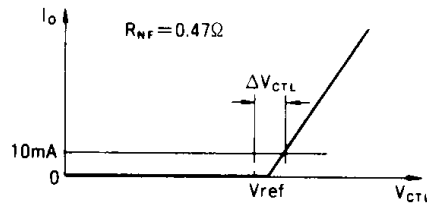


Figure 1 Buffer Amp Characteristics

This datasheet has been downloaded from:

www.DatasheetCatalog.com

Datasheets for electronic components.



LittleDiode supplies new, hard to find or obsolete electronic components and semiconductors all over the world.

With over two million different components listed you are sure to find the part you need.

Feel free to visit us today at our online store:

LittleDiode.com

Looking forward to providing you with the best possible service.