

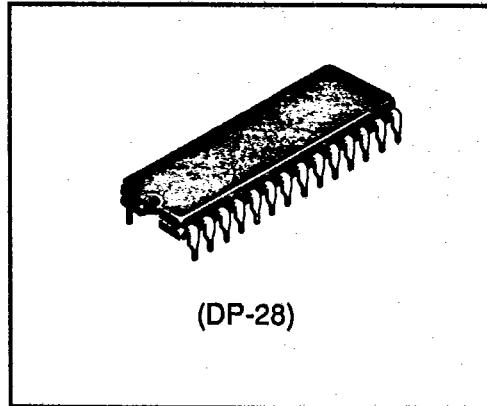
# HD440072

T-77-07-09

Sync Signal Generator for TV Cameras (NTSC, PAL/SECAM)

## Functions

- Four times chroma sub-carrier oscillator frequency
- (B-Y) and (R-Y) chroma sub-carrier output circuit
- Active filter genlock phase detector
- Horizontal programmable logic array
- Vertical programmable logic array
- Horizontal/vertical programmable logic array



(DP-28)

## Ordering Information

Type No.	Package
HD440072	DP-28



T-77-07-09

**HD440072****Pin Description**

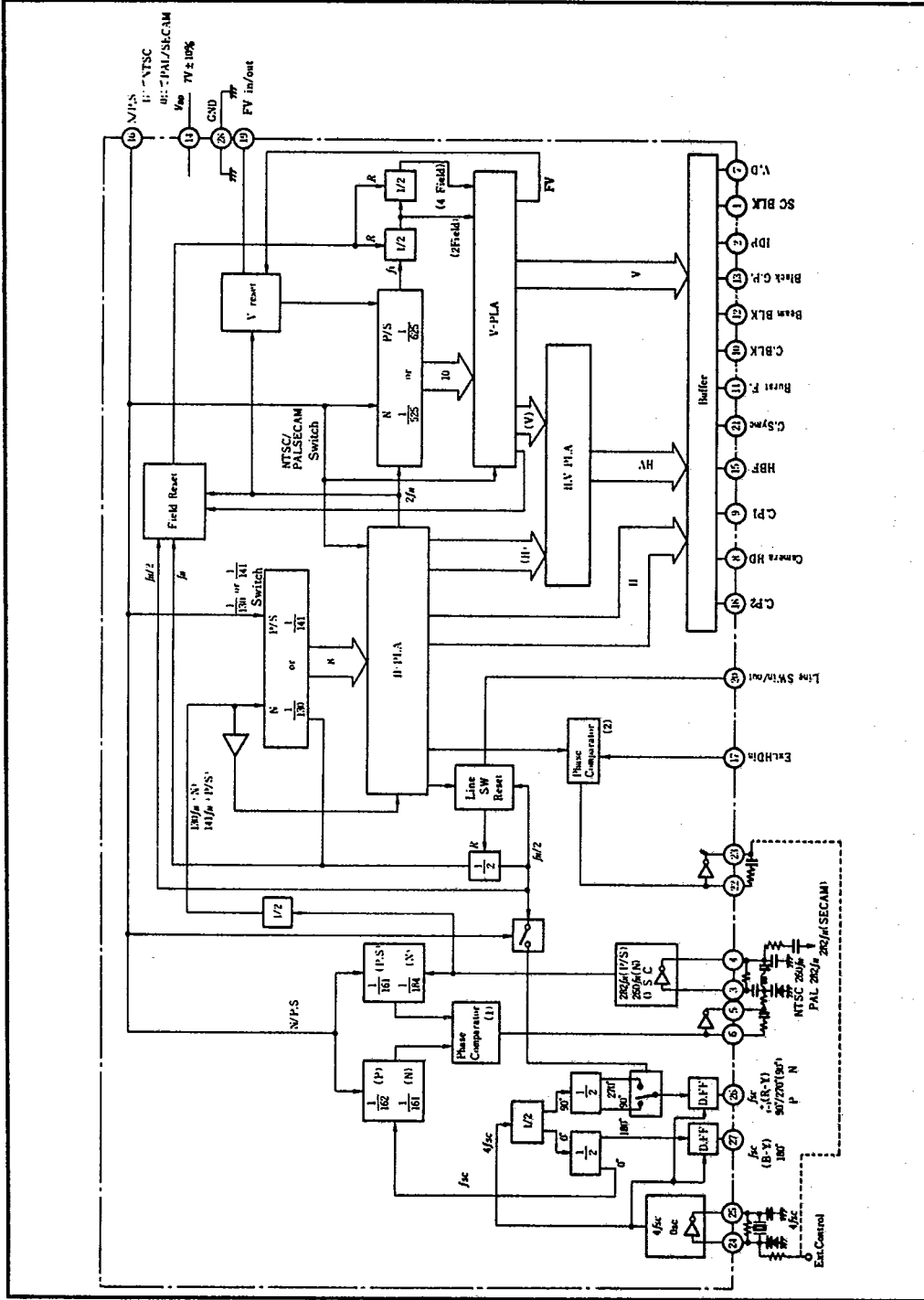
Pin No.	Function	Note	Max Output Current
1	SC. BLK	Identification pulse for SECAM	+250 $\mu$ A
2	ID. P	Identification pulse for SECAM	+250 $\mu$ A
3	260 $f_H$ /282 $f_H$ osc	In	
4	260 $f_H$ /282 $f_H$ osc	Out	
5	Filter	Out	
6	Filter	In	
7	VD		$\pm$ 250 $\mu$ A
8	Camera HD		$\pm$ 500 $\mu$ A
9	Clamp P		$\pm$ 500 $\mu$ A
10	Composite BLK		$\pm$ 500 $\mu$ A
11	Burst flag P		$\pm$ 100 $\mu$ A
12	Beam BLK		$\pm$ 500 $\mu$ A
13	Black gate P		$\pm$ 500 $\mu$ A
14	V <sub>DD</sub>	6.3 V to 7.0 V, typ 7.7 V	
15	HD		$\pm$ 500 $\mu$ A
16	Selector input	High level for NTSC, low level for PAL and SECAM	
17	External HD in	H genlock input	
18	Delayed HD		$\pm$ 500 $\mu$ A
19	Delayed VD in/out	In/out, output: V <sub>OH</sub> $\geq$ 0.8 V <sub>DD</sub> , V <sub>OL</sub> = 0.5 V <sub>DD</sub> , Input threshold 0.25 V <sub>DD</sub>	-500 $\mu$ A
20	Line SW in/out	In/out, pull-up resistor built-in	+250 $\mu$ A
21	Composite Sync		
22	Filter	In	
23	Filter	Out	
24	4 f <sub>SC</sub> osc	In	
25	4 f <sub>SC</sub> osc	Out	
26	SC (90°/270°)	For NTSC, 90° only (high level at pin 16)	$\pm$ 100 $\mu$ A
27	SC (180°)		$\pm$ 100 $\mu$ A
28	GND		



T-77-07-09

HD440072

Block Diagram



HD440072

T-77-07-09

Operations

Interleave (external HD input, pin 17 and phase comparator 2 are not used.) See figures 1 and 2.

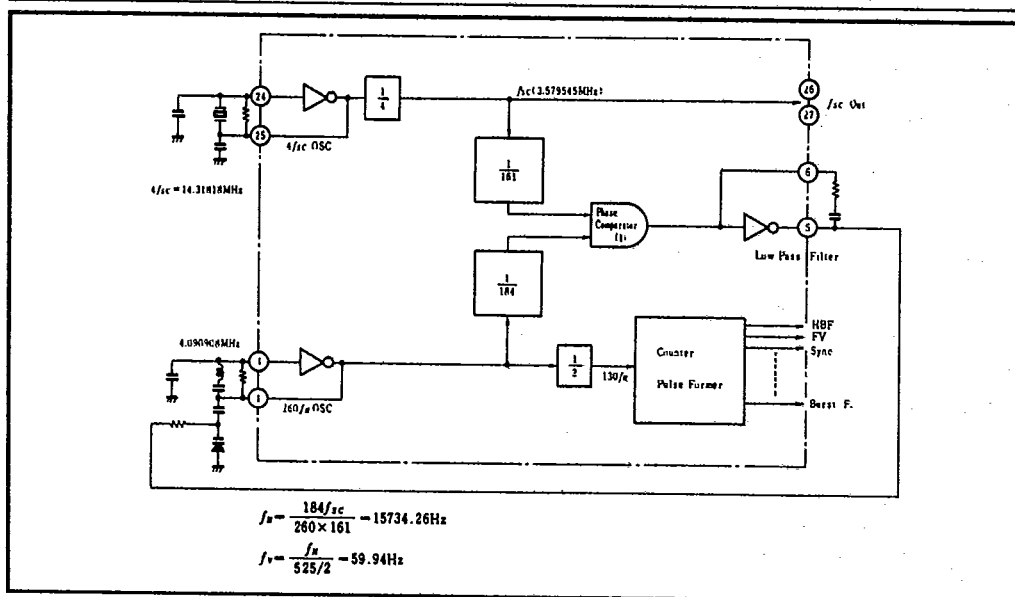


Figure 1 NTSC

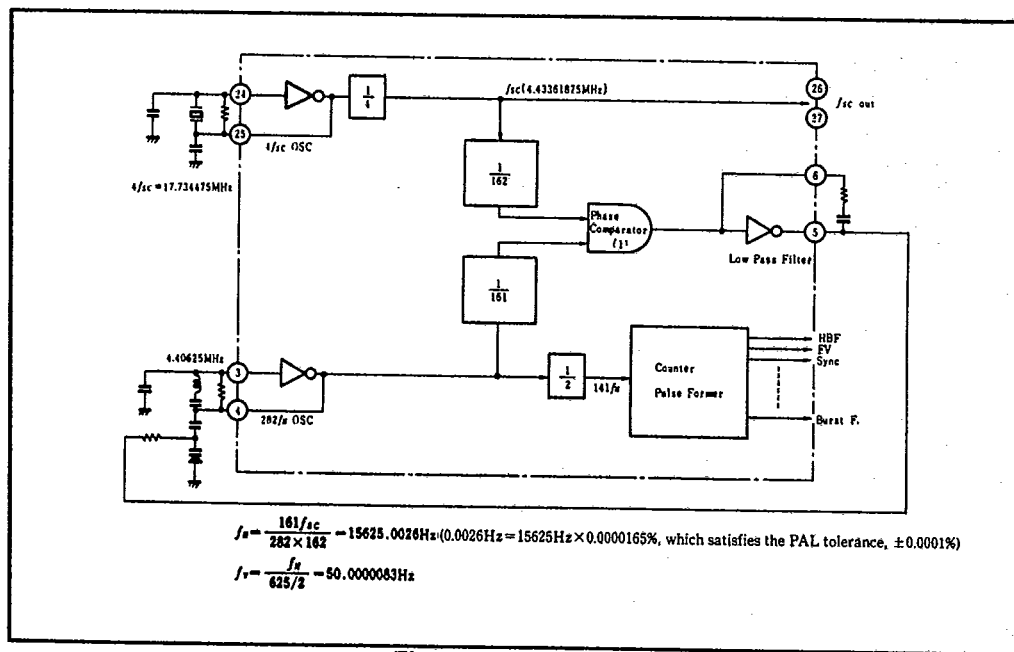


Figure 2 PAL, SECAM



T-77-07-09 HD440072

**Genlock**

In genlock mode, the operating principles of NTSC and PAL/SECAM are the same, so only NTSC is described below. See figure 3. Phase comparator 1 is not used. See figure 4.

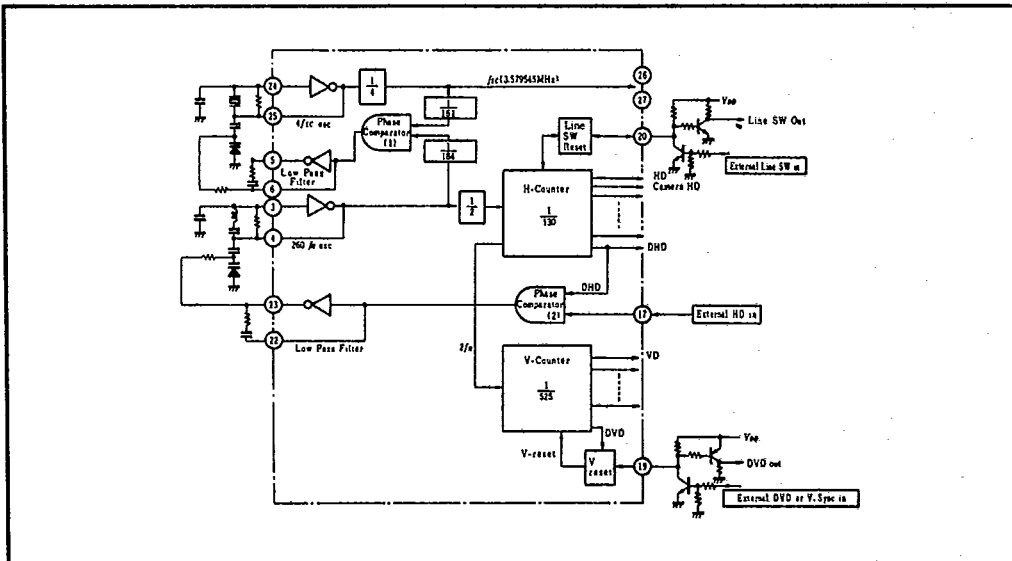


Figure 3 Genlock in Color Cameras

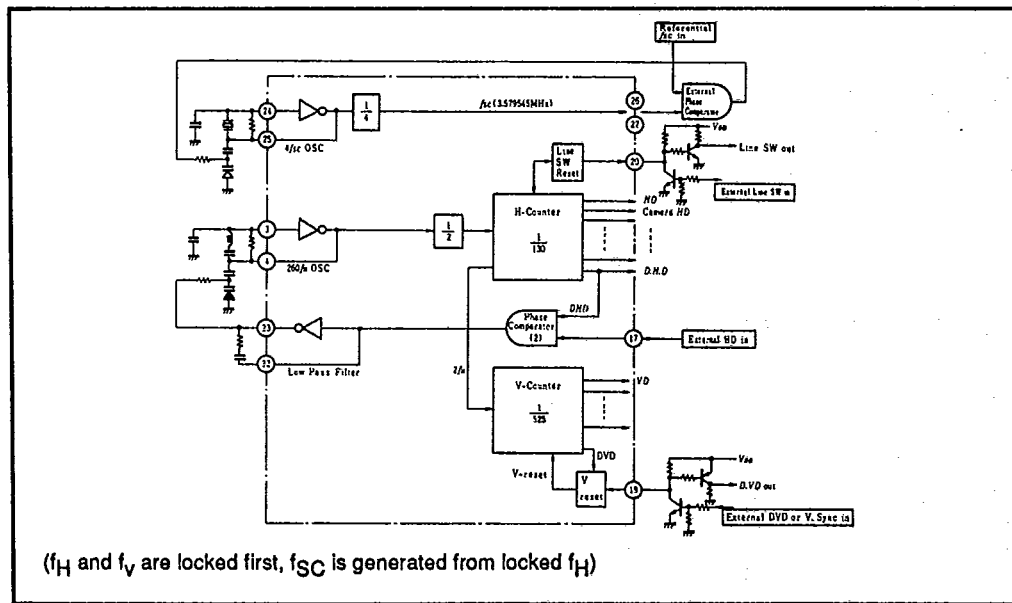


Figure 4 Genlock in B/W Cameras



**HD440072**

T-77-07-09

**Special Input/Output Terminals**

Pin 20 is for line SW input and output (figure 5). Figure 6 shows the internal circuit and IC operation. The LC oscillator uses a CMOS inverter and crystal oscillator. There is no internal DC

feedback resistor, so an external resistor for feedback should be connected, as in figure 7.

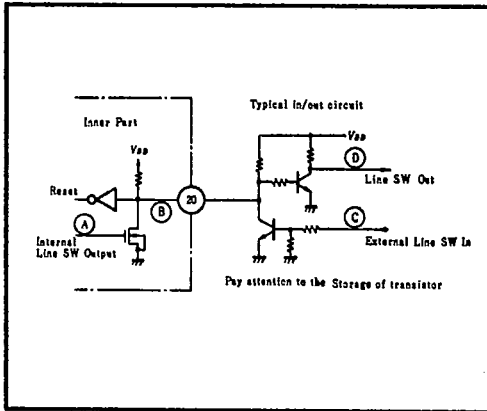


Figure 5 Pin 20 (Line SW In/Out)

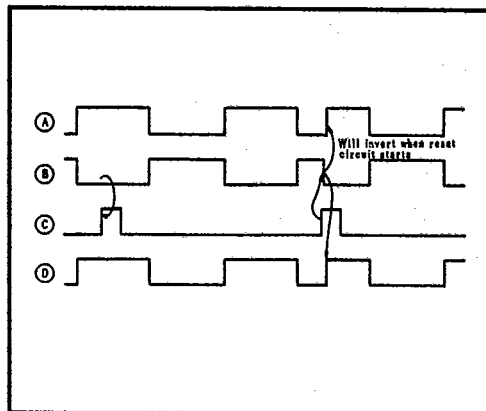


Figure 6 Internal Circuit and IC Operation

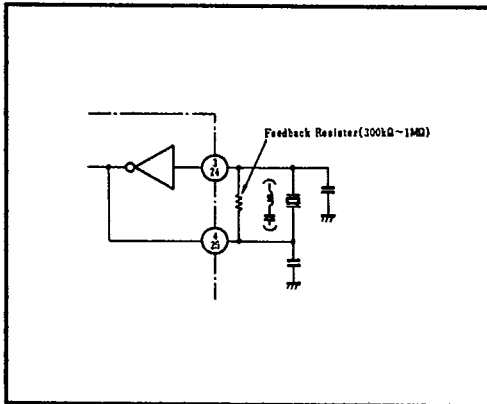


Figure 7 Pins 3, 4 and 24, 25 ( $260 f_H/282 f_H$  osc,  $4 f_{SC}$  osc)



Pin 19 is for FV output and V reset input. Figure 8 shows the internal circuit and IC operation. Output impedance is 500 Ω to 2 kΩ when pin 19 output is  $V_{DD}/2$ .

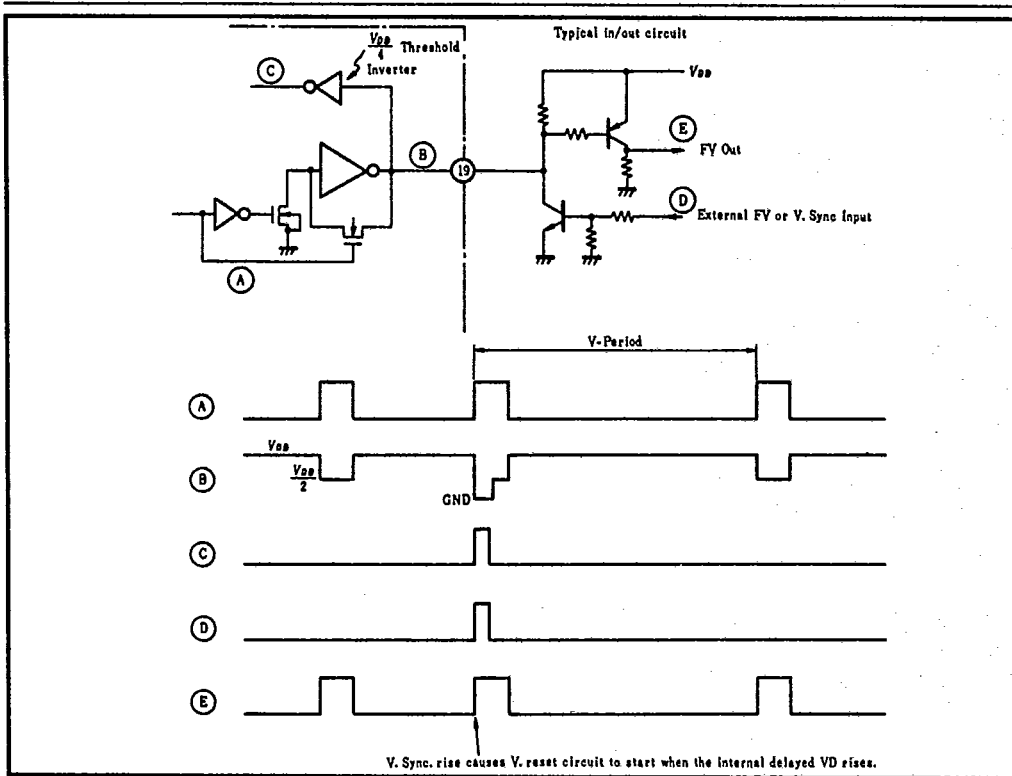


Figure 8 Pin 19, Delayed VD In/Out



HD440072

T-77-07-09

**Absolute Maximum Ratings** (Ta = 25°C)

Item	Symbol	Rating	Unit
Supply Voltage	V <sub>DD</sub>	10	V
Input Voltage	V <sub>IN</sub>	-0.3 to V <sub>DD</sub> + 0.3	V
Power Dissipation (Ta = 85°C)	P <sub>T</sub>	450	mW
Operating Temperature	T <sub>opr</sub>	-30 to +85	°C
Storage Temperature	T <sub>stg</sub>	-55 to +125	°C

**Electrical Characteristics** (Ta = 25°C)

Item	Symbol	Min	Typ	Max	Unit	Test Conditions
Operating Supply Voltage	V <sub>DD</sub>	6.3	7.0	7.7	V	
Supply Current	I <sub>DD</sub>	—	—	40	mA	Output pins open, under oscillation
Input Voltage	V <sub>IH</sub>	0.8 V <sub>p-p</sub>	—	V <sub>DD</sub> + 0.3	V	Pins 16, 17, and 20
	V <sub>IL</sub>	-0.3	—	0.2 V <sub>DD</sub>	V	
Input Threshold Voltage	V <sub>IH</sub>	0.2 V <sub>DD</sub>	0.25 V <sub>DD</sub>	0.3 V <sub>DD</sub>	V	Pin 19
Output Voltage	V <sub>OH</sub>	0.8 V <sub>DD</sub>	—	—	V	Pins 11, 26, and 27, I <sub>OH</sub> = -100 μA
		0.8 V <sub>DD</sub>	—	—	V	Pins 1, 2, and 7, I <sub>OH</sub> = -250 μA
		0.8 V <sub>DD</sub>	—	—	V	Pins 8, 9, 10, 12, 13, 15, 18, 19 and 21, I <sub>OH</sub> = -500 μA
	V <sub>OL</sub>	—	—	0.2 V <sub>DD</sub>	V	Pins 11, 26, and 27, I <sub>OL</sub> = 100 μA
		—	—	0.2 V <sub>DD</sub>	V	Pins 1, 2, 7, and 20, I <sub>OL</sub> = 250 μA
		—	—	0.2 V <sub>DD</sub>	V	Pins 8, 9, 10, 12, 13, 15, 18, and 21, I <sub>OL</sub> = 500 μA
		0.4 V <sub>DD</sub>	0.5 V <sub>DD</sub>	0.6 V <sub>DD</sub>	V	Pin 19, open
Output Impedance	Z <sub>out</sub>	500	1000	2000	Ω	Low output level at pin 19
Pull-Up Resistance	I <sub>R</sub>	-200	-100	-50	μA	High output level at pin 20, pin 20 grounded



T-77-07-09

HD440072

Electrical Characteristics (cont)

Item	Symbol	Min	Typ	Max	Unit	Test Conditions
Maximum Clock Pulse Frequency	$f_{C \max}$	20	—	—	MHz	$V_{DD} = 6.3 \text{ V}$ , 20 MHz crystal resonator between pins 24 and 25, output at pins 26 and 27 (20/4 = 5 MHz output)
Maximum Divider Operating Frequency	$f_{D \max}$	5.0	—	—	MHz	$V_{DD} = 6.3 \text{ V}$ , LC between pins 3 and 4, normal oscillation frequency at output terminal
Pin 26 Output Phase Angle (NTSC)	$\phi_N$	88	90	92	deg	Pin 26 output phase referred to $180^\circ$ (= pin 27 output phase), pin 16: $V_{DD}$ , $V_{DD} = 6.3\text{--}7.7 \text{ V}$
Pin 26 Output Phase Angle (PAL 1)	$\phi_{P1}$	88	90	92	deg	Pin 26 output phase referred to $180^\circ$ (= pin 27 output phase), pin 16: GND, high level line output
Pin 26 Output Phase Angle (PAL 2)	$\phi_{P2}$	268	270	272	deg	Pin 26 output phase referred to $180^\circ$ (= pin 27 output phase), pin 16: GND, low level line output





Timing Charts

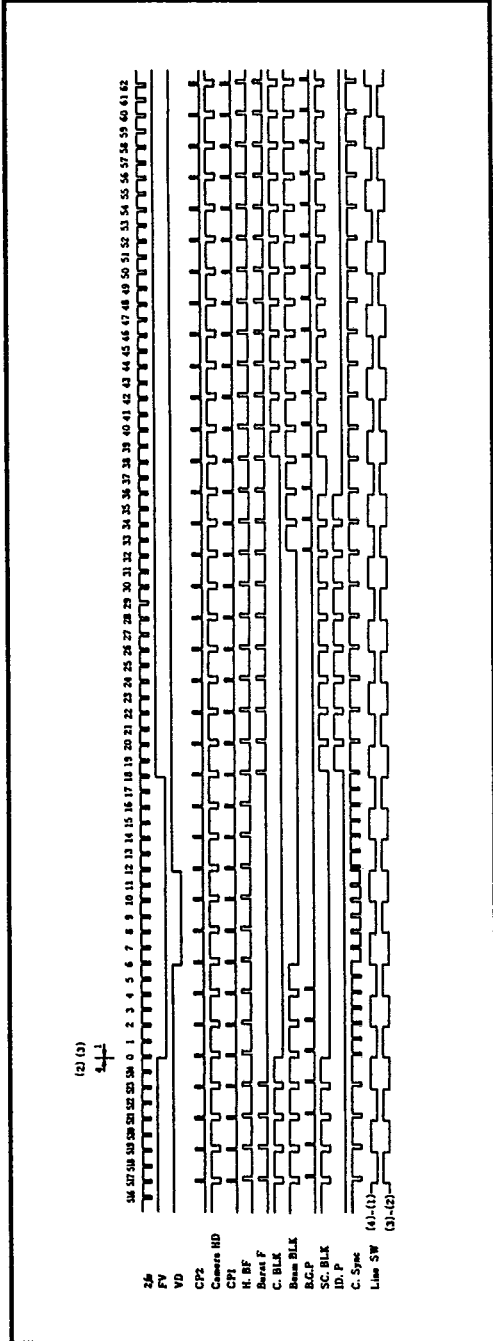


Figure 10 Timing Chart 1

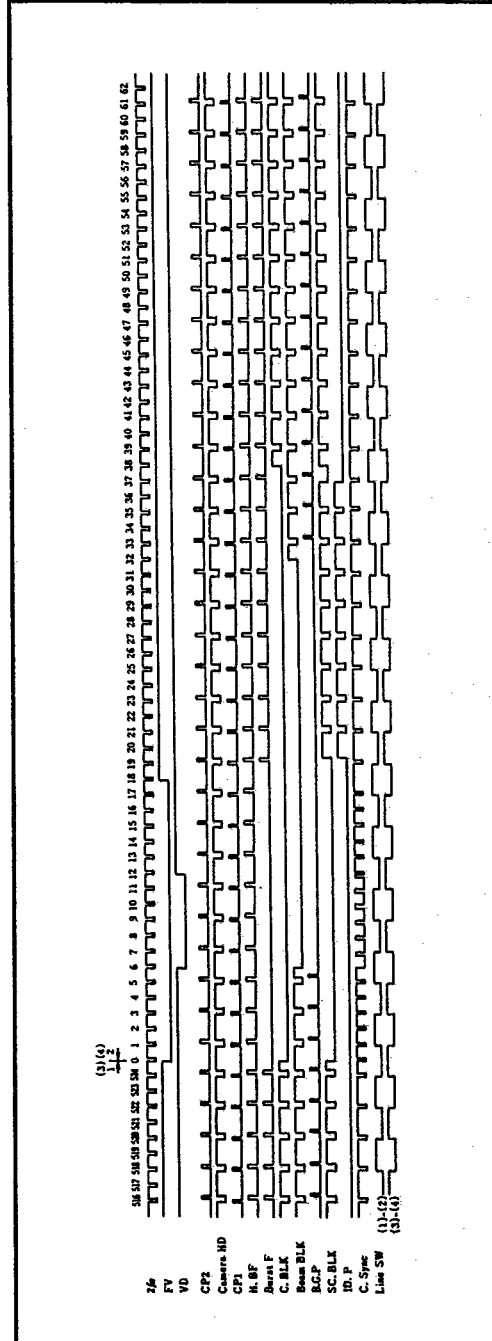


Figure 11 Timing Chart 2



HD440072

T-77-07-09

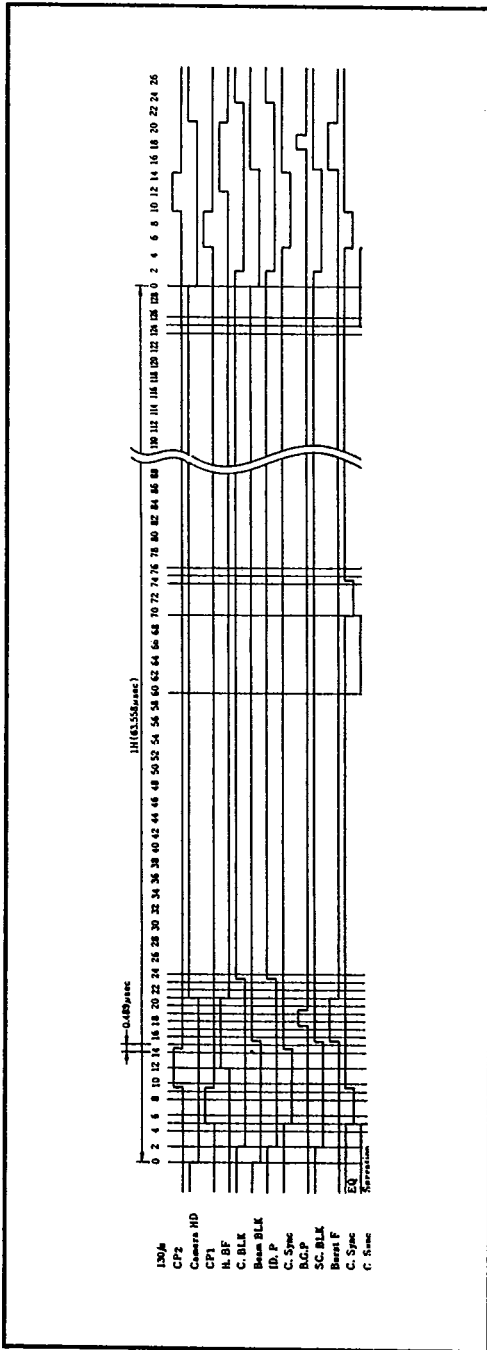


Figure 12 Timing Chart 3

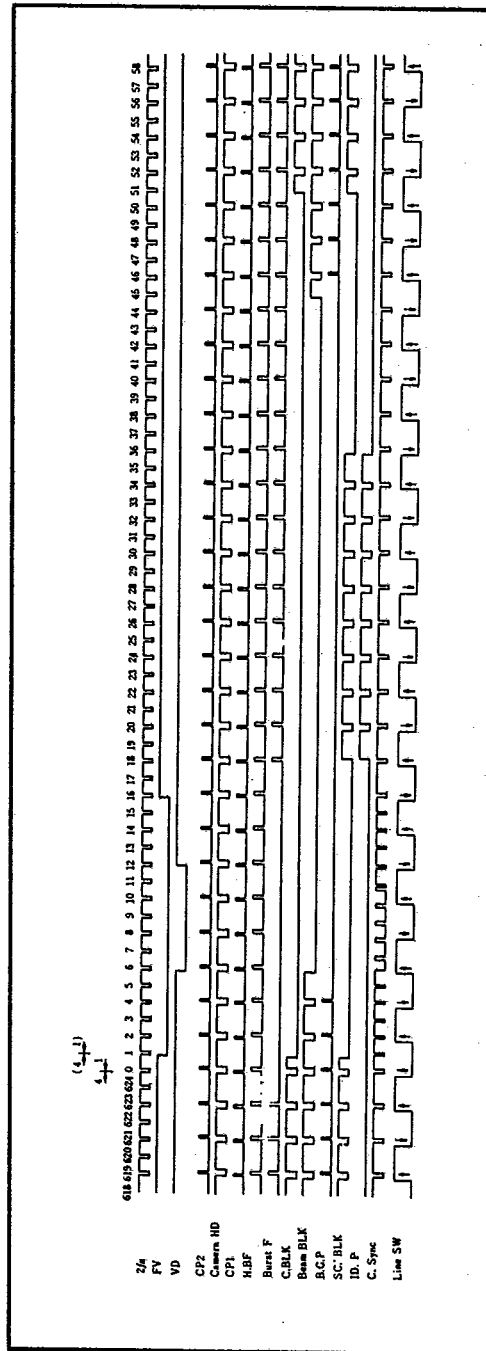


Figure 13 Timing Chart 4



T-77-07-09

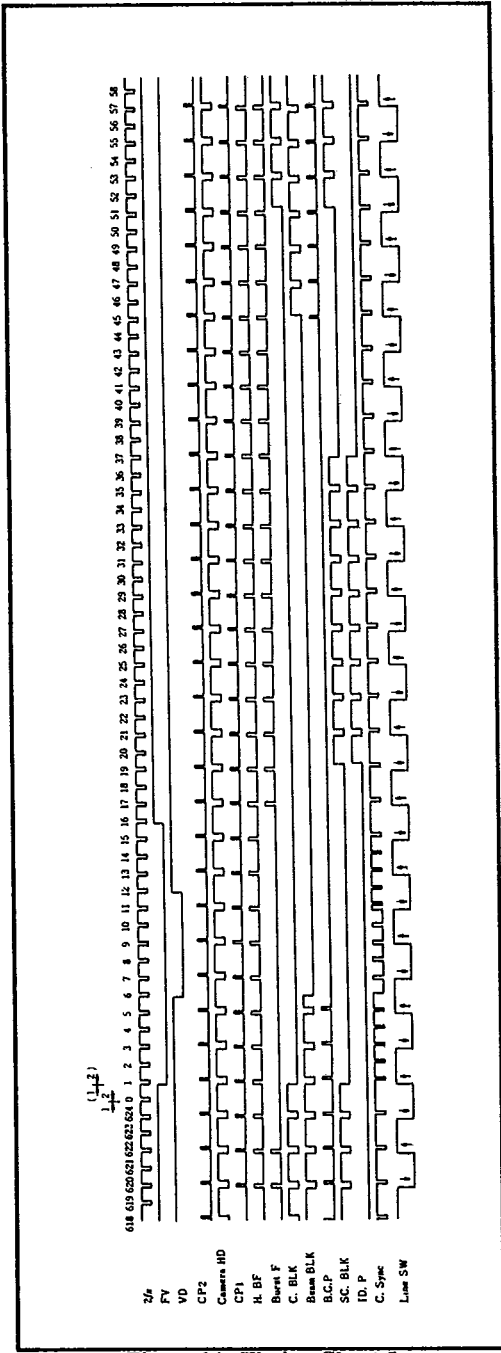


Figure 14 Timing Chart 5

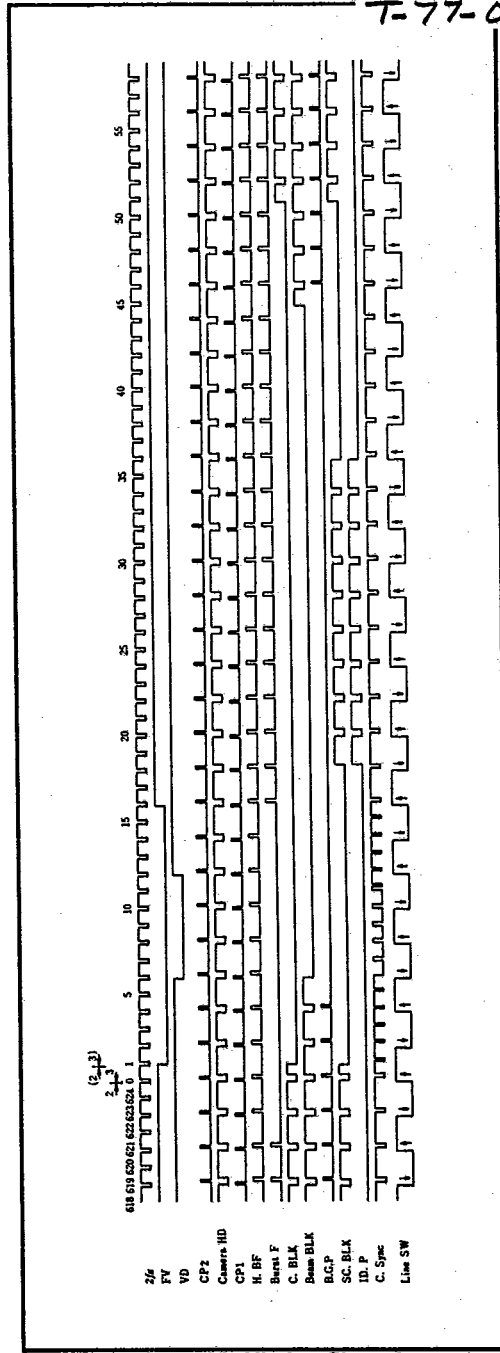


Figure 15 Timing Chart 6



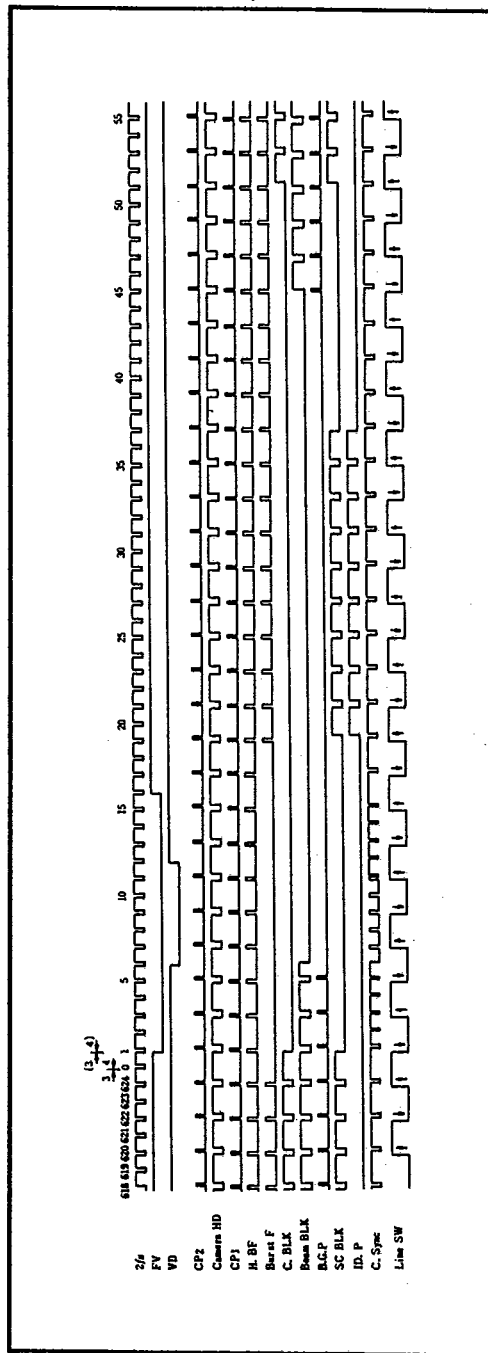


Figure 16 Timing Chart 7



HD440072

T-77-07-09

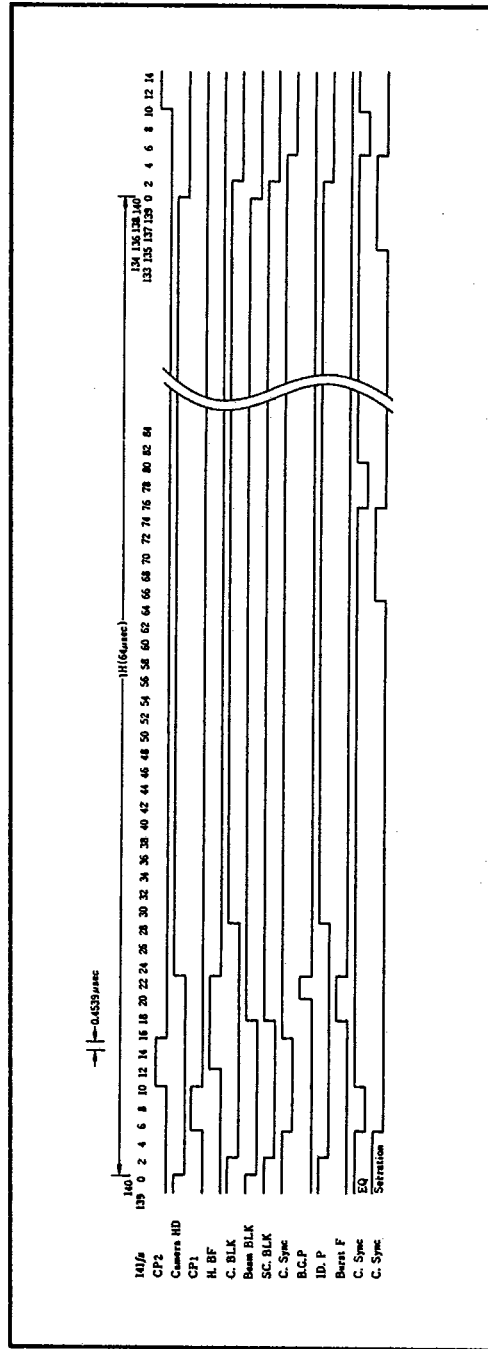


Figure 17 Timing Chart 8



This datasheet has been downloaded from:

[www.DatasheetCatalog.com](http://www.DatasheetCatalog.com)

Datasheets for electronic components.



LittleDiode supplies new, hard to find or obsolete electronic components and semiconductors all over the world.

With over two million different components listed you are sure to find the part you need.

Feel free to visit us today at our online store:

[LittleDiode.com](http://LittleDiode.com)

Looking forward to providing you with the best possible service.