

32,768-word × 8-bit High Speed CMOS Static RAM

The Hitachi HM62256A is a CMOS static RAM organized 32-kword × 8-bit. It realizes higher performance and low power consumption by employing 0.8 μm Hi-CMOS process technology. The device, packaged in a 8 × 14 mm TSOP with thickness of 1.2 mm, 450-mil SOP (foot print pitch width), 600-mil plastic DIP, or 300-mil plastic DIP, is available for high density mounting. TSOP package is suitable for cards, and reverse type TSOP is also provided. It offers low power standby power dissipation; therefore, it is suitable for battery back up system.

Features

- High speed: Fast Access time 85/100/120/150 ns (max)
- Low Power
Standby: 5 μW (typ) (L/L-SL version)
Operation: 40 mW (typ) (f = 1 MHz)
- Single 5 V supply
- Completely static memory
No clock or timing strobe required
- Equal access and cycle times
- Common data input and output: Three state output
- Directly TTL compatible: All inputs and outputs
- Capability of battery back up operation

Ordering Information

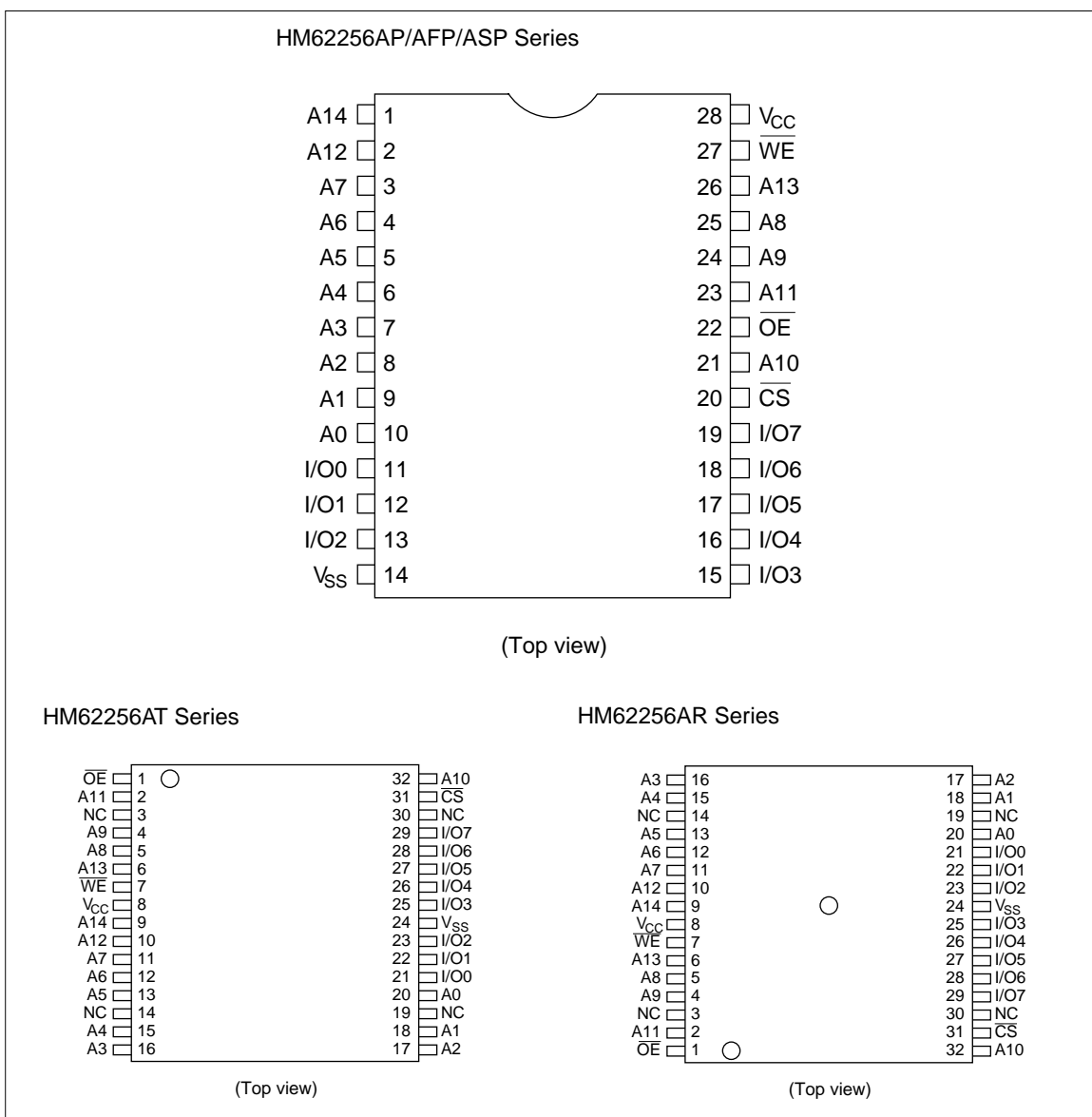
Type No.	Access time	Package
HM62256AP-8	85 ns	600-mil
HM62256AP-10	100 ns	28-pin
HM62256AP-12	120 ns	plastic DIP
HM62256AP-15	150 ns	(DP-28)
HM62256ALP-8	85 ns	
HM62256ALP-10	100 ns	
HM62256ALP-12	120 ns	
HM62256ALP-15	150 ns	
HM62256ALP-8SL	85 ns	
HM62256ALP-10SL	100 ns	
HM62256ALP-12SL	120 ns	
HM62256ALP-15SL	150 ns	
HM62256ASP-8	85 ns	300-mil
HM62256ASP-10	100 ns	28-pin
HM62256ASP-12	120 ns	plastic DIP
HM62256ASP-15	150 ns	(DP-28NA)
HM62256ALSP-8	85 ns	
HM62256ALSP-10	100 ns	
HM62256ALSP-12	120 ns	
HM62256ALSP-15	150 ns	
HM62256ALSP-8SL	85 ns	
HM62256ALSP-10SL	100 ns	
HM62256ALSP-12SL	120 ns	
HM62256ALSP-15SL	150 ns	
HM62256AFP-8T	85 ns	450-mil
HM62256AFP-10T	100 ns	28-pin
HM62256AFP-12T	120 ns	plastic SOP
HM62256AFP-15T	150 ns	(FP-28DA)
HM62256ALFP-8T	85 ns	
HM62256ALFP-10T	100 ns	
HM62256ALFP-12T	120 ns	
HM62256ALFP-15T	150 ns	
HM62256ALFP-8SLT	85 ns	
HM62256ALFP-10SLT	100 ns	
HM62256ALFP-12SLT	120 ns	
HM62256ALFP-15SLT	150 ns	

Note: This device is not available for new application.

TSOP Series

Type No.	Access time	Package	Type No.	Access time	Package
HM62256ALT-8	85 ns	8 mm × 14 mm	HM62256ALR-8	85 ns	8 mm × 14 mm
HM62256ALT-10	100 ns	32-pin TSOP	HM62256ALR-10	100 ns	32-pin TSOP
HM62256ALT-12	120 ns	(normal type)	HM62256ALR-12	120 ns	(reverse type)
HM62256ALT-15	150 ns	(TFP-32DA)	HM62256ALR-15	150 ns	(TFP-32DAR)
HM62256ALT-8SL	85 ns		HM62256ALR-8SL	85 ns	
HM62256ALT-10SL	100 ns		HM62256ALR-10SL	100 ns	
HM62256ALT-12SL	120 ns		HM62256ALR-12SL	120 ns	
HM62256ALT-15SL	150 ns		HM62256ALR-15SL	150 ns	

Pin Arrangement



Function Table

\overline{WE}	\overline{CS}	\overline{OE}	Mode	V_{CC} current	I/O pin	Ref. cycle
X	H	X	Not selected	I_{SB}, I_{SB1}	High-Z	—
H	L	H	Output disable	I_{CC}	High-Z	—
H	L	L	Read	I_{CC}	Dout	Read cycle (1)–(3)
L	L	H	Write	I_{CC}	Din	Write cycle (1)
L	L	L	Write	I_{CC}	Din	Write cycle (2)

Note: X: H or L

Absolute Maximum Ratings

Parameter	Symbol	Value	Unit
Voltage on any pin relative to V_{SS}	V_T	-0.5^{*1} to +7.0	V
Power dissipation	P_T	1.0	W
Operating temperature	T_{opr}	0 to +70	°C
Storage temperature	T_{stg}	-55 to +125	°C
Storage temperature under bias	T_{bias}	-10 to +85	°C

Note: 1. V_T min = -3.0 V for pulse half-width \leq 50 ns

Recommended DC Operating Conditions ($T_a = 0$ to +70°C)

Parameter	Symbol	Min	Typ	Max	Unit
Supply voltage	V_{CC}	4.5	5.0	5.5	V
	V_{SS}	0	0	0	V
Input high (logic 1) voltage	V_{IH}	2.2	—	6.0	V
Input low (logic 0) voltage	V_{IL}	-0.5^{*1}	—	0.8	V

Note: 1. V_{IL} min = -3.0 V for pulse half-width \leq 50 ns

DC Characteristics ($T_a = 0$ to $+70^\circ\text{C}$, $V_{CC} = 5\text{ V} \pm 10\%$, $V_{SS} = 0\text{ V}$)

Parameter	Symbol	Min	Typ* ¹	Max	Unit	Test conditions	
Input leakage current	$ I_{LI} $	—	—	1	μA	$V_{in} = V_{SS}$ to V_{CC}	
Output leakage current	$ I_{LO} $	—	—	1	μA	$\overline{CS} = V_{IH}$ or $\overline{OE} = V_{IH}$ or $\overline{WE} = V_{IL}$, $V_{I/O} = V_{SS}$ to V_{CC}	
Operating V_{CC} current	I_{CC}	—	6	15	mA	$\overline{CS} = V_{IL}$, others = V_{IH}/V_{IL} $I_{out} = 0\text{ mA}$	
	HM62256A-8	I_{CC1}	—	33	50	mA	min cycle, duty = 100%, $I_{I/O} = 0\text{ mA}$ $\overline{CS} = V_{IL}$, others = V_{IH}/V_{IL}
	HM62256A-10		—	30	50		
	HM62256A-12		—	27	45		
	HM62256A-15		—	24	40		
	I_{CC2}	—	5	15	mA	Cycle time = $1\mu\text{s}$, $I_{I/O} = 0\text{ mA}$ $\overline{CS} = V_{IL}$, $V_{IH} = V_{CC}$, $V_{IL} = 0$	
Standby V_{CC} current	I_{SB}	—	0.3	2	mA	$\overline{CS} = V_{IH}$	
	I_{SB1}	—	0.01	1	mA	$V_{in} \geq 0\text{ V}$ $\overline{CS} \geq V_{CC} - 0.2\text{ V}$	
		—	0.3^{*2}	100^{*2}	μA		
		—	0.3^{*3}	50^{*3}	μA		
Output low voltage	V_{OL}	—	—	0.4	V	$I_{OL} = 2.1\text{ mA}$	
Output high voltage	V_{OH}	2.4	—	—	V	$I_{OH} = -1.0\text{ mA}$	

- Notes: 1. Typical values are at $V_{CC} = 5.0\text{ V}$, $T_a = +25^\circ\text{C}$ and not guaranteed.
 2. This characteristics is guaranteed only for L-version.
 3. This characteristics is guaranteed only for L-SL version.

Capacitance ($T_a = 25^\circ\text{C}$, $f = 1\text{ MHz}$)*¹

Parameter	Symbol	Min	Typ	Max	Unit	Test conditions
Input capacitance	C_{in}	—	—	6	pF	$V_{in} = 0\text{ V}$
Input/output capacitance	$C_{I/O}$	—	—	8	pF	$V_{I/O} = 0\text{ V}$

- Note: 1. This parameter is sampled and not 100% tested.

AC Characteristics ($T_a = 0$ to $+70^\circ\text{C}$, $V_{CC} = 5\text{ V} \pm 10\%$, unless otherwise noted.)

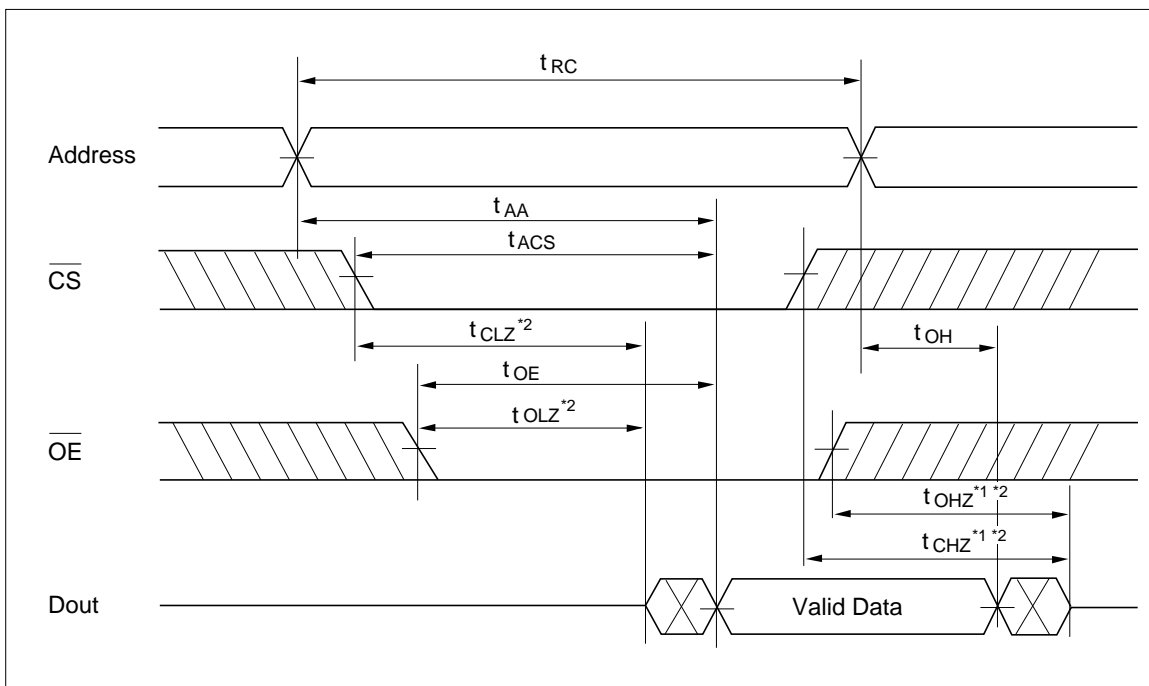
Test Conditions

- Input pulse levels: 0.8 V to 2.4 V
- Input and output timing reference levels: 1.5 V
- Input rise and fall times: 5 ns
- Output load: 1 TTL Gate + C_L (100 pF) (Including scope & jig)

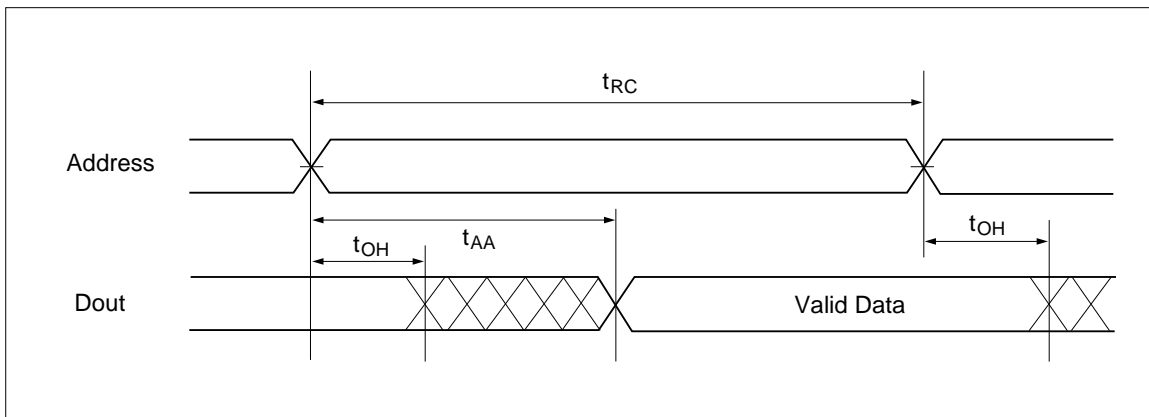
Read Cycle

Parameter	Symbol	HM62256A-8		HM62256A-10		HM62256A-12		HM62256A-15		Unit	Note
		Min	Max	Min	Max	Min	Max	Min	Max		
Read cycle time	t_{RC}	85	—	100	—	120	—	150	—	ns	
Address access time	t_{AA}	—	85	—	100	—	120	—	150	ns	
Chip select access time	t_{ACS}	—	85	—	100	—	120	—	150	ns	
Output enable to output valid	t_{OE}	—	45	—	50	—	60	—	70	ns	
Chip selection to output in low-Z	t_{CLZ}	10	—	10	—	10	—	10	—	ns	2
Output enable to output in low-Z	t_{OLZ}	5	—	5	—	5	—	5	—	ns	2
Chip deselection to output in high-Z	t_{CHZ}	0	30	0	35	0	40	0	50	ns	1, 2
Output disable to output in high-Z	t_{OHZ}	0	30	0	35	0	40	0	50	ns	1, 2
Output hold from address change	t_{OH}	5	—	10	—	10	—	10	—	ns	

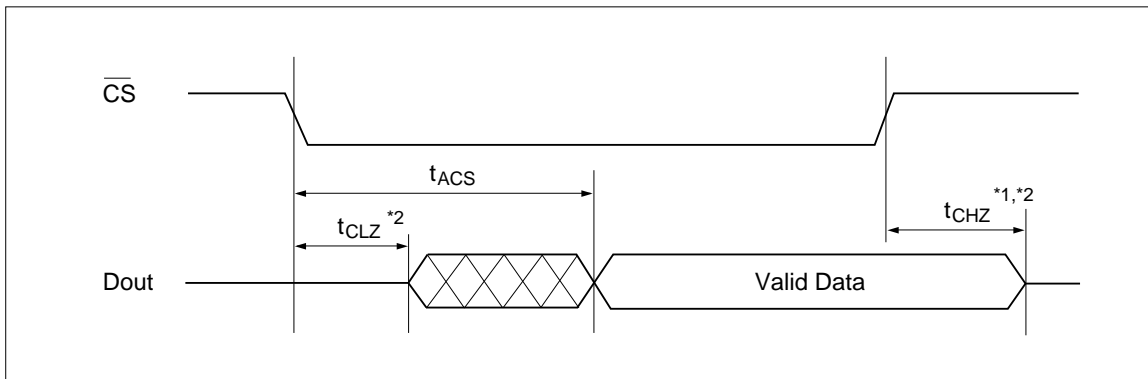
Read Timing Waveform (1) *3



Read Timing Waveform (2) *3 *4 *6



Read Timing Waveform (3) *3 *5 *6

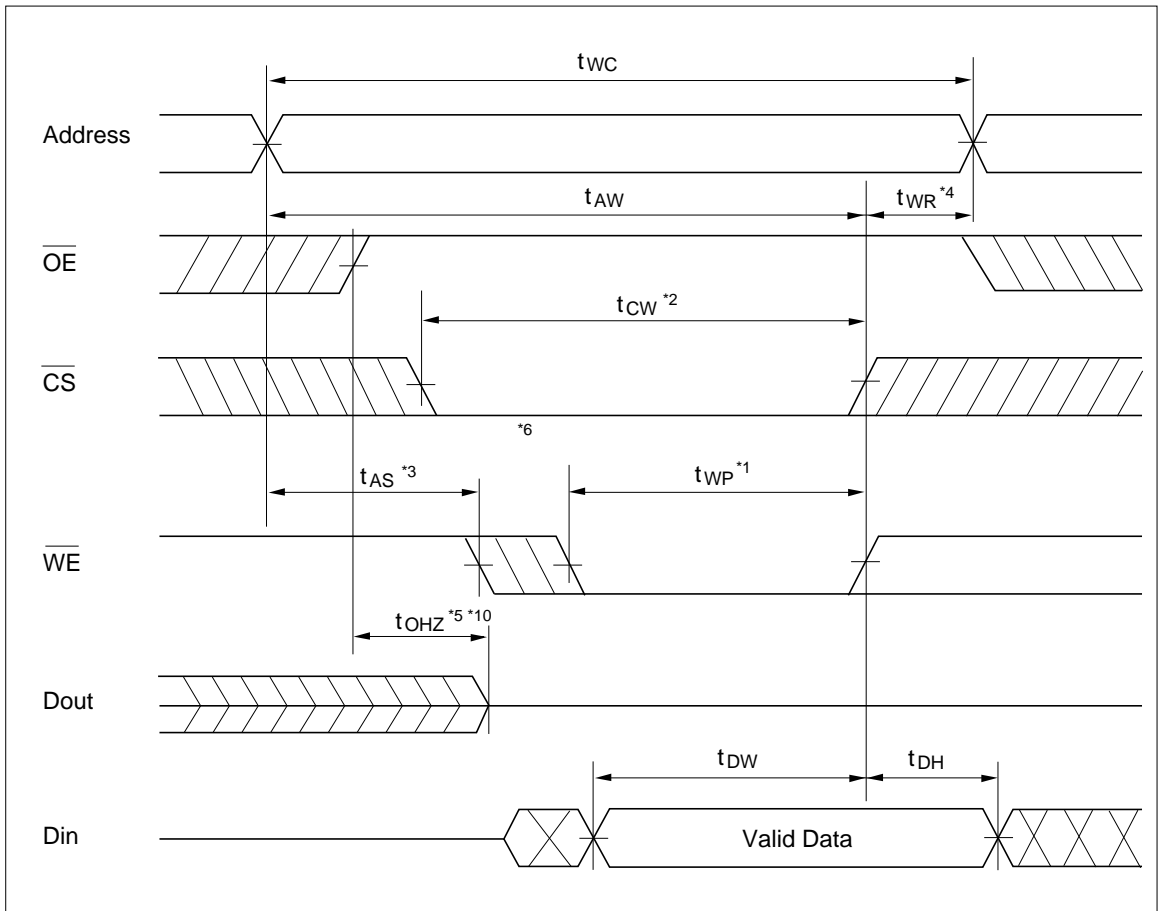


- Notes: 1. t_{CHZ} and t_{OHZ} are defined as the time at which the outputs achieve the open circuit conditions and are not referenced to output voltage levels.
- 2. This parameter is sampled and not 100% tested.
- 3. \overline{WE} is high for read cycle.
- 4. Device is continuously selected, $\overline{CS} = V_{IL}$.
- 5. Address Valid prior to or coincident with \overline{CS} transition Low.
- 6. $\overline{OE} = V_{IL}$.

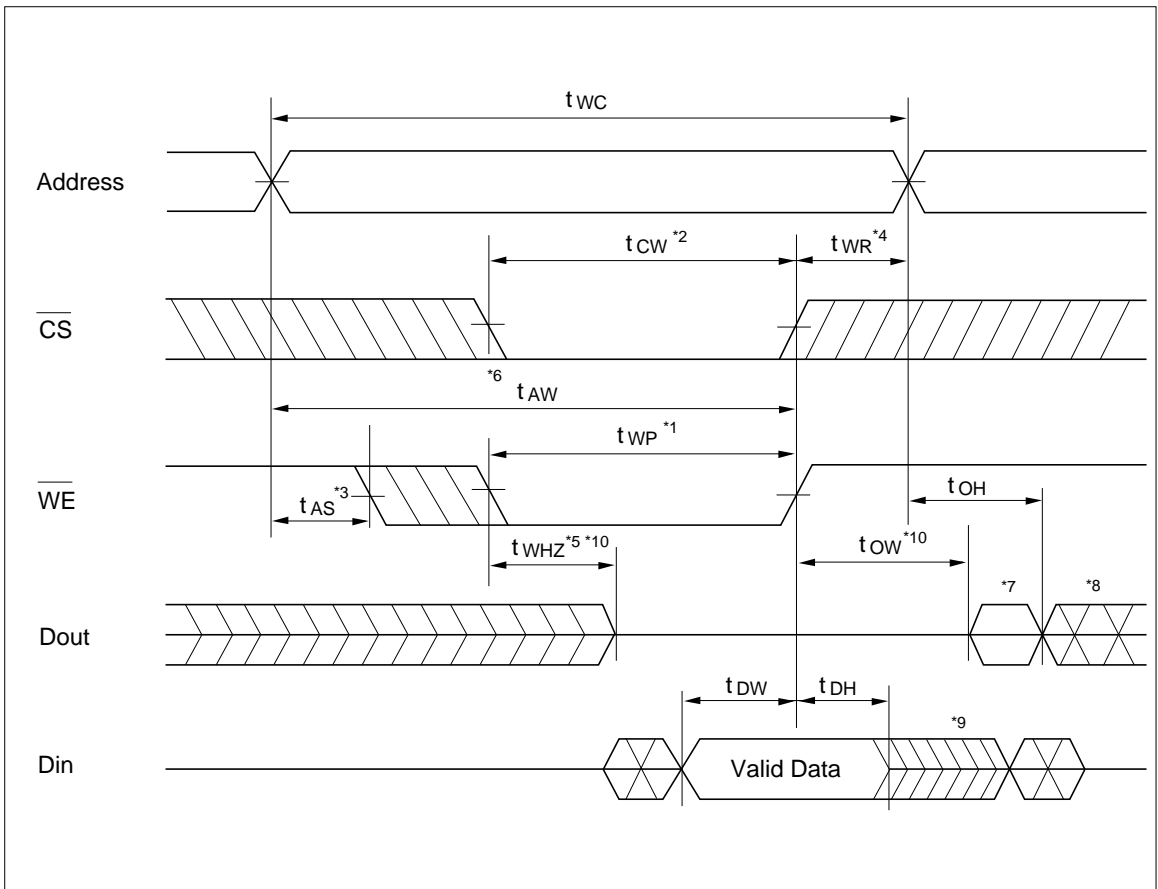
Write Cycle

Parameter	Symbol	HM62256A-8		HM62256A-10		HM62256A-12		HM62256A-15		Unit	Note
		Min	Max	Min	Max	Min	Max	Min	Max		
Write cycle time	t_{WC}	85	—	100	—	120	—	150	—	ns	
Chip selection to end of write	t_{CW}	75	—	80	—	85	—	100	—	ns	2
Address setup time	t_{AS}	0	—	0	—	0	—	0	—	ns	3
Address valid to end of write	t_{AW}	75	—	80	—	85	—	100	—	ns	
Write pulse width	t_{WP}	55	—	60	—	70	—	90	—	ns	1
Write recovery time	t_{WR}	0	—	0	—	0	—	0	—	ns	4
\overline{WE} to output in high-Z	t_{WHZ}	0	30	0	35	0	40	0	50	ns	10
Data to write time overlap	t_{DW}	40	—	40	—	50	—	60	—	ns	
Data hold from write time	t_{DH}	0	—	0	—	0	—	0	—	ns	
Output active from end of write	t_{OW}	5	—	5	—	5	—	5	—	ns	10
Output disable to output in high-Z	t_{OHZ}	0	30	0	35	0	40	0	50	ns	10, 11

Write Timing Waveform (1) (\overline{OE} Clock)



Write Timing Waveform (2) (\overline{OE} Low Fixed)



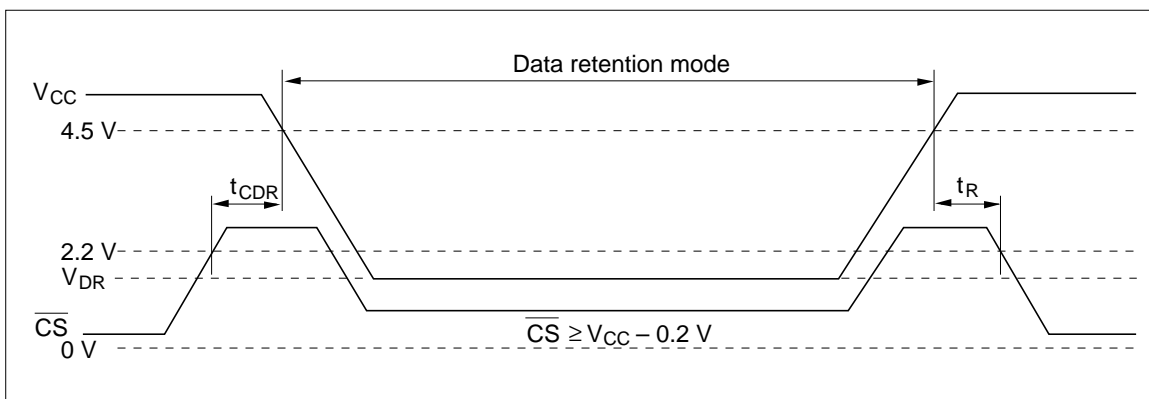
- Notes:
1. A write occurs during the overlap of a low \overline{CS} and a low \overline{WE} . A write begins at the later transition of \overline{CS} going low or \overline{WE} going low. A write ends at the earlier transition of \overline{CS} going high or \overline{WE} going high. t_{WP} is measured from the beginning of write to the end of write.
 2. t_{CW} is measured from \overline{CS} going low to the end of write.
 3. t_{AS} is measured from the address valid to the beginning of write.
 4. t_{WR} is measured from the earlier of \overline{WE} or \overline{CS} going high to the end of write cycle.
 5. During this period, I/O pins are in the output state so that the input signals of the opposite phase to the outputs must not be applied.
 6. If the \overline{CS} low transition occurs simultaneously with the \overline{WE} low transition or after the \overline{WE} transition, the output remain in a high impedance state.
 7. Dout is the same phase of the write data of this write cycle.
 8. Dout is the read data of next address.
 9. If \overline{CS} is low during this period, I/O pins are in the output state. Therefore, the input signals of the opposite phase to the output must not be applied to them.
 10. This parameter is sampled and not 100% tested.
 11. t_{OHZ} and t_{WHZ} are defined as the time at which the outputs achieve the open circuit conditions and are not referenced to output voltage levels.

Low V_{CC} Data Retention Characteristics ($T_a = 0$ to $+70^{\circ}\text{C}$)

This characteristics is guaranteed only for L/L-SL version.

Parameter	Symbol	Min	Typ ^{*1}	Max	Unit	Test conditions
V_{CC} for data retention	V_{DR}	2	—	—	V	$\overline{CS} \geq V_{CC} - 0.2 \text{ V}, V_{in} \geq 0 \text{ V}$
Data retention current	I_{CCDR}	—	0.2	30^{*2}	μA	$V_{CC} = 3.0 \text{ V}, V_{in} \geq 0 \text{ V}$
		—	0.2	10^{*3}	μA	$\overline{CS} \geq V_{CC} - 0.2 \text{ V}$
Chip deselect to data retention time	t_{CDR}	0	—	—	ns	See retention waveform
Operation recovery time	t_R	t_{RC}^{*4}	—	—	ns	

Low V_{CC} Data Retention Timing Waveform



- Notes:
- 1 Typical values are at $V_{CC} = 3.0 \text{ V}$, $T_a = +25^{\circ}\text{C}$ and not guaranteed.
 - 2 $20 \mu\text{A}$ max at $T_a = 0$ to $+40^{\circ}\text{C}$. (only for L-version)
 - 3 $3 \mu\text{A}$ max at $T_a = 0$ to $+40^{\circ}\text{C}$. (only for L-SL version)
 - 4 t_{RC} = read cycle time.
 - 5 \overline{CS} controls address buffer, \overline{WE} buffer, \overline{OE} buffer, and D_{in} buffer. If \overline{CS} controls data retention mode, V_{in} levels (address, \overline{WE} , \overline{OE} , I/O) can be in the high impedance state.

This datasheet has been downloaded from:

www.DatasheetCatalog.com

Datasheets for electronic components.



LittleDiode supplies new, hard to find or obsolete electronic components and semiconductors all over the world.

With over two million different components listed you are sure to find the part you need.

Feel free to visit us today at our online store:

LittleDiode.com

Looking forward to providing you with the best possible service.