

PHOTOCOUPLER

T-41-85

6N138, 6N139 GaAlAs INFRARED+ PHOTO-IC

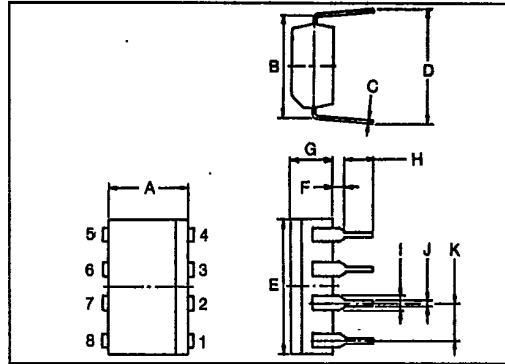
The 6N138 and 6N139 consist of a GaAlAs infrared emitting diode coupled with a split-Darlington output configuration. A high speed GaAlAs infrared manufactured with a unique LPE junction, has the virtue of fast rise and fall time at low drive current.

APPLICATIONS

- CURRENT LOOP DRIVER
- LOW INPUT CURRENT LINE RECEIVER
- CMOS LOGIC INTERFACE

FEATURES

- Isolation voltage: 2500V_{rms} (Min.)
- Current transfer ratio: 6N138 - 300% Min. (I_F=1.6mA)
6N139 - 400% Min. (I_F=0.5mA)
- Switching time: 6N138 - t_{PHL}=10μs Max.
- t_{PLH}=35μs Max.
6N139 - t_{PHL}=1μs Max.
- t_{PLH}=7μs Max.



SYMBOL	INCHES	MM
A	0.252	6.4
B	0.300	7.62 ± 0.25
C	0.010 ± 0.002	0.25 ± 0.05
D	0.309 ~ 0.346	7.85 ~ 8.80
E	0.390 ± 0.010	9.66 ± 0.25
F	0.031	0.8
G	0.144	3.65
H	0.100 MIN	2.5 MIN
I	0.047	1.2
J	0.020	0.5
K	0.100 ± 0.010	2.54 ± 0.25

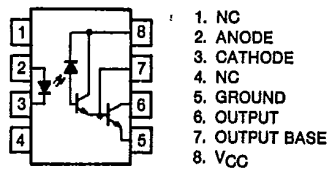
MAXIMUM RATINGS (T_a=25°C)

CHARACTERISTIC	SYMBOL	RATING	UNIT
Forward Current (Note 1)	I _F	20	mA
Pulse Forward Current	I _{FP*1}	40	mA
Total Pulse Forward Current	I _{FP*2}	1	A
Reverse Voltage	V _R	5	V
Diode Power Dissipation (Note 2)	P _D	35	mW
Output Current (Note 3)	I _O	60	mA
Emitter-Base Reverse Voltage	V _{EB}	0.5	V
Supply Voltage	V _{CC*3}	-0.5 ~ 18	V
Output Voltage	V _{O*3}	-0.5 ~ 18	V
Output Power Dissipation (Note 4)	P _O	100	mW
Operating Temperature Range	T _{opr}	- 0 ~ 70	°C
Storage Temperature Range	T _{stg}	- 55 ~ 125	°C
Lead Solder Temperature (10 sec.)	T _{sold}	260	°C
Isolation Voltage (1 min., RH ≤ 60%)	BV _{S**}	2500	V _{rms}
		3540	V _{dc}

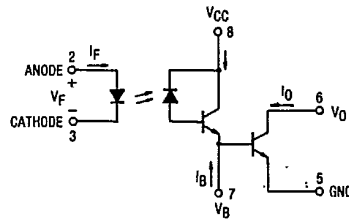
* JEDEC Registered Data.
 ** Not Registered JEDEC.
 *1: 50% duty cycle, 1ms pulse width.
 *2: Pulse width 1μs, 300pps.
 *3: 6N138 ... -0.5 to 7V.
 *4: 1.6mm below seating plane.

A - LED B - DETECTOR

PIN CONFIGURATION (TOP VIEW)



SCHEMATIC



PHOTOCOUPLER

OPTO-ELECTRICAL CHARACTERISTICS OVER RECOMMENDED TEMPERATURE ($T_a = 0^{\circ}\text{C} \sim 70^{\circ}\text{C}$ Unless otherwise noted)

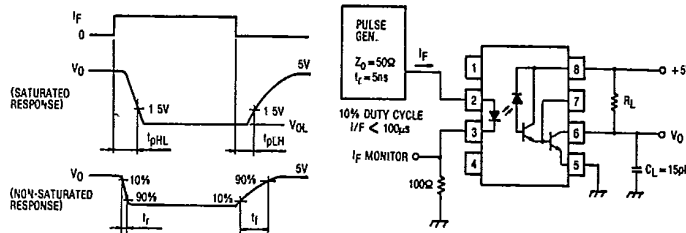
T-41-85

CHARACTERISTIC	SYMBOL	TEST CONDITION	MIN.	TYP.**	MAX.	UNIT
Current Transfer Ratio (Note 5, 6)	6N139	$I_F = 0.5\text{mA}, V_O = 0.4\text{V}$ $V_{CC} = 4.5\text{V}$	400	800	—	%
	6N138		500	900	—	
Logic Low Output Voltage (Note 6)	6N139	$I_F = 1.6\text{mA}, I_O = 6.4\text{mA}$ $V_{CC} = 4.5\text{V}$	—	0.1	0.4	V
			—	0.1	0.4	
			—	0.2	0.4	
			—	0.1	0.4	
Logic High Output Current (Note 6)	6N139	$I_F = 0\text{mA}, V_O = V_{CC} = 18\text{V}$	—	0.05	100	μA
	6N138		—	0.05	250	
Logic Low Supply Current (Note 6)	I_{CCL}	$I_F = 1.6\text{mA}, V_O = \text{Open}, V_{CC} = 5\text{V}$	—	0.2	—	mA
Logic High Supply Current (Note 6)	I_{CCH}	$I_F = 0\text{mA}, V_O = \text{Open}, V_{CC} = 5\text{V}$	—	10	—	nA
Input Forward Voltage	V_{F^*}	$I_F = 1.6\text{mA}, T_a = 25^{\circ}\text{C}$	—	1.65	1.7	V
Input Reverse Breakdown Voltage	BV_{R^*}	$I_R = 10\mu\text{A}, T_a = 25^{\circ}\text{C}$	5	—	—	V
Temperature Coefficient of Forward Voltage	$\frac{\Delta V_F}{\Delta T_a}$	$I_F = 1.6\text{mA}$	—	-1.9	—	mV/ $^{\circ}\text{C}$
Input Capacitance	C_{IN}	$f = 1\text{MHz}, V_F = 0$	—	60	—	pF
Input-Output Isolation Leakage Current	I_{I-O^*}	45% Relative Humidity, $t = 5\text{s}, V_{I-O} = 3000\text{Vdc}$ $T_a = 25^{\circ}\text{C}$ (Note 7)	—	—	1.0	μA
Resistance (Input-Output)	R_{I-O}	$V_{I-O} = 500\text{Vdc}$ (Note 7)	—	10^{12}	—	Ω
Capacitance (Input-Output)	C_{I-O}	$f = 1\text{MHz}$ (Note 7)	—	0.6	—	pF

** JEDEC Registered Data.

* All typicals at $T_a = 25^{\circ}\text{C}$ and $V_{CC} = 5\text{V}$, Unless otherwise noted.

TEST CIRCUIT 1.



PHOTOCOUPLER

T-41-85

SWITCHING CHARACTERISTICS (Ta = 25°C, Vcc = 5V, Unless otherwise noted)

CHARACTERISTIC	SYMBOL	TEST CIR-CUIT	TEST CONDITION	MIN.	TYP.	MAX.	UNIT
Propagation Delay Time to Logic Low at Output (Note 6, 8)	6N139	1	$I_F = 0.5\text{mA}, R_L = 4.7\text{k}\Omega$	—	5	25.0	μs
	6N138		$I_F = 12\text{mA}, R_L = 270\Omega$	—	0.2	1	μs
			$I_F = 1.6\text{mA}, R_L = 2.2\text{k}\Omega$	—	1	10	μs
Propagation Delay Time to Logic High at Output (Note 6, 8)	6N139	1	$I_F = 0.5\text{mA}, R_L = 4.7\text{k}\Omega$	—	5	60	μs
	6N138		$I_F = 12\text{mA}, R_L = 270\Omega$	—	1	7	μs
			$I_F = 1.6\text{mA}, R_L = 2.2\text{k}\Omega$	—	4	35	μs
Common Mode Transient Immunity at Logic High Level Output (Note 9)	CMH	2	$I_F = 0\text{mA}, R_L = 2.2\text{k}\Omega$ $V_{CM} = 400\text{Vp-p}$	—	500	—	$\text{V}/\mu\text{s}$
Common Mode Transient Immunity at Logic Low Level Output (Note 9)	CM _L	2	$I_F = 1.6\text{mA}, R_L = 2.2\text{k}\Omega$ $V_{CM} = 400\text{Vp-p}$	—	-500	—	$\text{V}/\mu\text{s}$

* JEDEC Registered Data.

Note 1: Derate linearly above 50°C free-air temperature at a rate of 0.4mA/°C.

Note 2: Derate linearly above 50°C free-air temperature at a rate of 0.7mW/°C.

Note 3: Derate linearly above 25°C free-air temperature at a rate of 0.7mW/°C.

Note 4: Derate linearly above 25°C free-air temperature at a rate of 2.0mW/°C.

Note 5: DC CURRENT TRANSFER RATIO is defined as the ratio of output collector current, I_O , to the forward LED input current, I_F , times 100%.

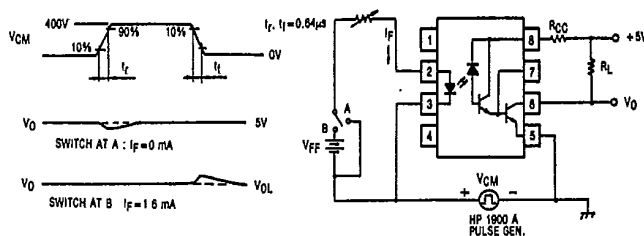
Note 6: Pin 7 Open.

Note 7: Device considered a two-terminal device: Pins 1, 2, 3, and 4 shorted together and Pins 5, 6, 7 and 8 shorted together.

Note 8: Use of a resistor between pin 5 and 7 will decrease gain and delay time.

Note 9: Common mode transient immunity in Logic High level is the maximum tolerable (positive) dV_{CM}/dt on the leading edge of the common mode pulse, V_{CM} , to assure that the output will remain in a Logic High state (i.e., $V_O > 2.0\text{V}$). Common mode transient immunity in Logic Low level is the maximum tolerable (negative) dV_{CM}/dt on the trailing edge of the common mode pulse signal, V_{CM} , to assure that the output will remain in a Logic Low state (i.e., $V_O < 0.8\text{V}$).

TEST CIRCUIT 2.





LittleDiode supplies new, hard to find or obsolete electronic components and semiconductors all over the world.

With over two million different components listed you are sure to find the part you need.

Feel free to visit us today at our online store:

LittleDiode.com

Looking forward to providing you with the best possible service.