

SINGLE CHANNEL IL30/31/55 DUAL CHANNEL ILD30/31/55 QUAD CHANNEL ILQ30/31/55 PHOTODARLINGTON OPTOCOUPLER

FEATURES

- **Current Transfer Ratio**
IL/ILD/ILQ30/55, 100% min.
IL/ILD/ILQ31, 200% min.
- **125 mA Load Current Rating**
- **Fast Rise Time, 10 μ S**
- **Fast Fall Time, 35 μ S**
- **Single, Dual and Quad Channel**
- **Solid State Reliability**
- **Standard DIP Packages**
- **Underwriters Lab File #E52744**
-  **VDE 0884 Available with Option 1**

DESCRIPTION

The IL30/31/55, ILD30/31/55, and ILQ30/31/55 are optically coupled isolators with Gallium Arsenide infrared emitters and silicon photodarlington sensors. Switching can be achieved while maintaining a high degree of isolation between driving and load circuits, with no crosstalk between channels. These optocouplers can be used to replace reed and mercury relays with advantages of long life, high speed switching and elimination of magnetic fields.

The IL30/31/55 are equivalent to MCA230/MCA231/MCA255. The ILD30/31/55 re designed to reduce board space requirements in high density applications.

Maximum Ratings

Emitter (each channel)

Peak Reverse Voltage..... 3 V
Continuous Forward Current..... 60 mA
Power Dissipation at 25°C..... 100 mW
Derate Linearly from 25°C 1.33 mW/°C

Detector (each channel)

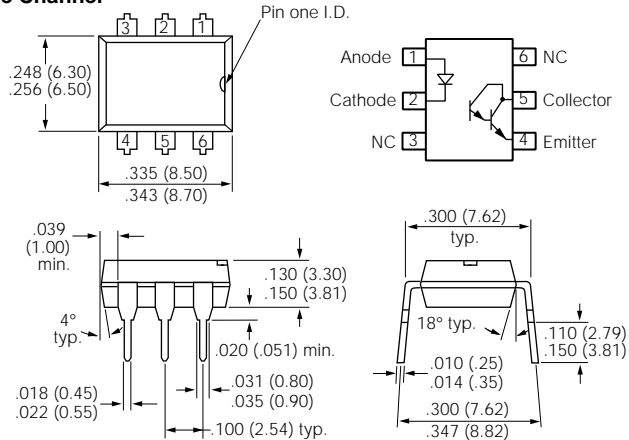
Collector-Emitter Breakdown Voltage
IL/D/Q30..... 30 V
IL/D/Q55..... 55 V
Collector (Load) Current..... 125 mA
Power Dissipation at 25°C Ambient..... 150 mW
Derate Linearly from 25°C 2.0 mW/°C

Package

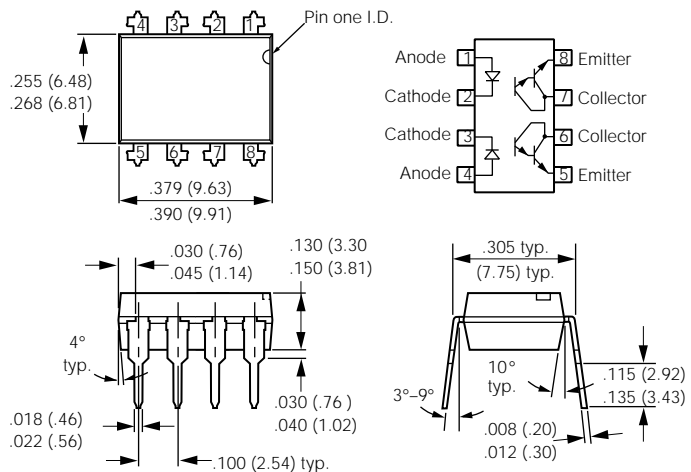
Total Package Power Dissipation at 25°C
IL30/31/55..... 250 mW
ILD30/31/55..... 400 mW
ILQ30/31/55..... 500 mW
Derate Linearly from 25°C
IL30/31/55..... 3.3 mW/°C
ILD30/31/55..... 5.33 mW/°C
ILQ30/31/55..... 6.67 mW/°C
Isolation Test Voltage..... 5300 VAC_{RMS}
Creepage..... 7 mm min.
Clearance..... 7 mm min.
Comparative Tracking Index..... 175
Storage Temperature..... -55°C to +125°C
Operating Temperature..... -55°C to +100°C
Lead Soldering Time at 260°C 10 sec.

Dimensions in inches (mm)

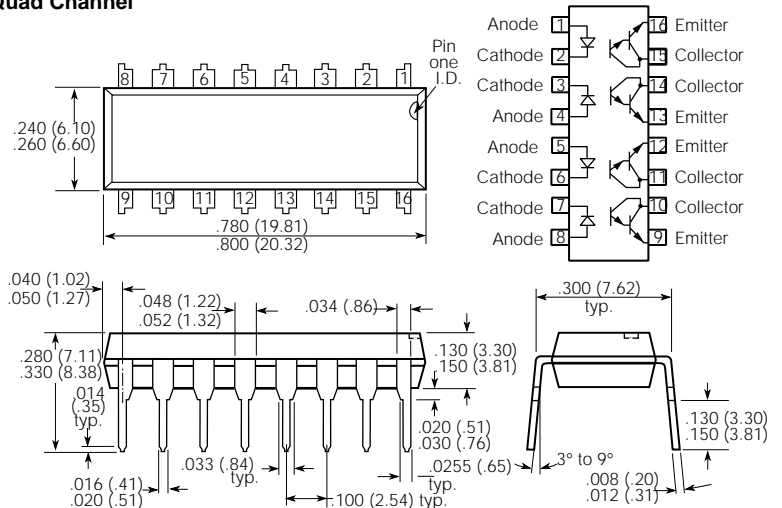
Single Channel



Dual Channel



Quad Channel



Electrical Characteristics ($T_A=25^\circ\text{C}$)

	Symbol	Min.	Typ.	Max..	Unit	Condition
GaAs Emitter (per channel)						
Forward Voltage	V_F		1.25	1.5	V	$I_F=20\text{ mA}$
Reverse Current	I_R		0.1	10	μA	$V_R=3.0\text{ V}$
Capacitance	C_O		25		pF	$V_R=0\text{ V}$
Detector (per channel)						
Collector-Emitter Breakdown Voltage	BV_{CEO}	30/55			V	$I_C=100\ \mu\text{A}$
Collector-Emitter Leakage Current	I_{CEO}		1.0	100	nA	$V_{CE}=10\text{ V}, I_F=0$
Collector-Emitter Capacitance	C_{CE}		3.4		pF	$V_{CE}=10\text{ V}, f=1\text{ MHz}$
Package						
Current Transfer Ratio IL/D/Q30/55 IL/D/Q31	CTR	100 200	400 400		% %	$I_F=10\text{ mA}, V_{CE}=5\text{ V}$ $I_F=10\text{ mA}, V_{CE}=5\text{ V}$
Collector-Emitter Saturation Voltage	V_{CEsat}		0.9	1.0	V	$I_C=50\text{ mA}, I_F=50\text{ mA}$
Isolation Test Voltage		5300			$V_{AC_{RMS}}$	
Isolation Resistance	R_{ISOL}		10^{12}		W	
Coupling Capacitance	C_{ISOL}		0.5		pF	
Rise Time	t_R		10		μs	$V_{CC}=13.5\text{ V}, I_F=50\text{ mA}, R_L=100\ \Omega$
Fall Time	t_F		35		μs	

Figure 1. Forward voltage versus forward current

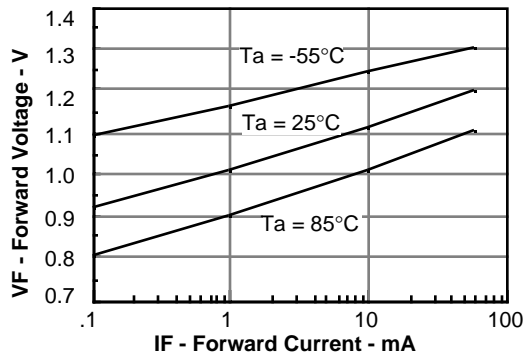


Figure 3. Normalized non-saturated and saturated collector-emitter current versus LED current

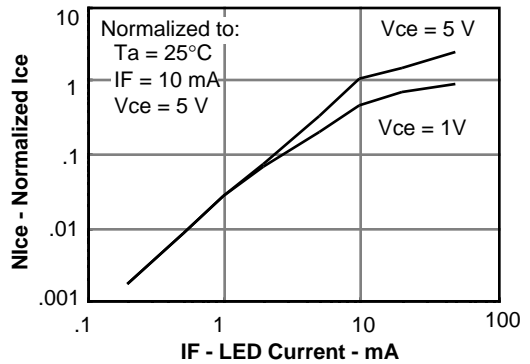


Figure 2. Normalized non-saturated and saturated CTRce at $T_A=25^\circ\text{C}$ versus LED current

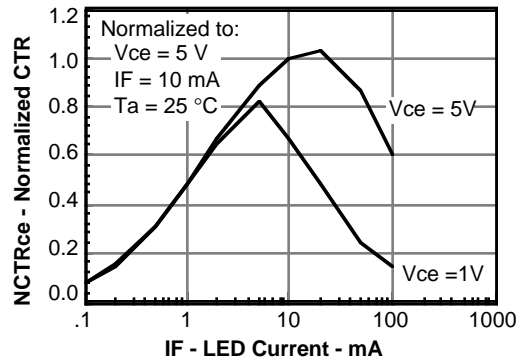


Figure 4. Normalized collector-base photocurrent versus LED current

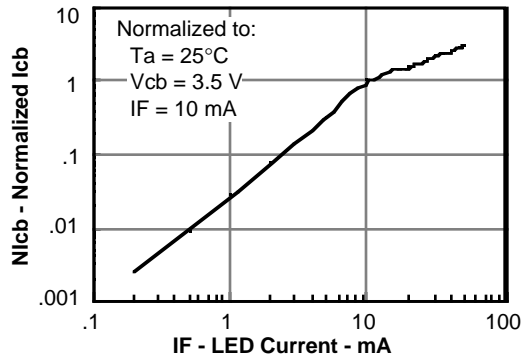


Figure 5. Hfe current gain versus base current

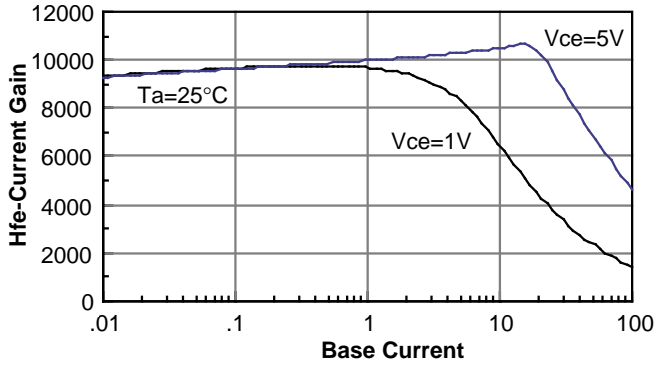


Figure 6. Low to high propagation delay versus collector load resistance and LED current

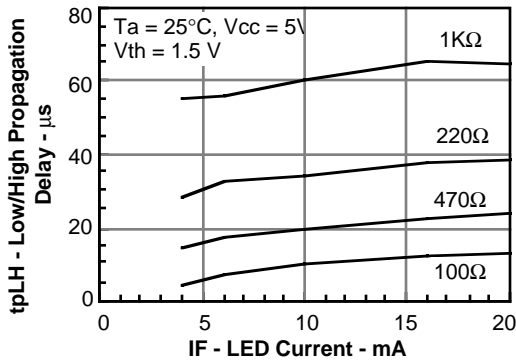


Figure 7. High to low propagation delay versus collector load resistance and LED current

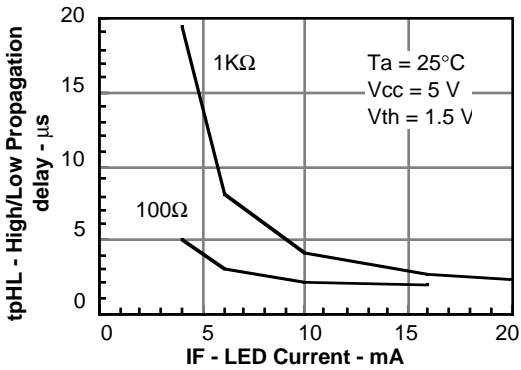


Figure 8. Switching waveforms

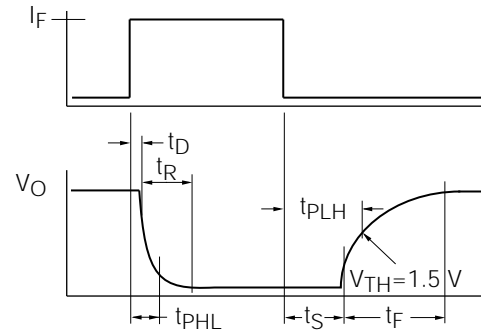
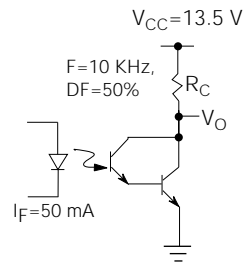


Figure 9. Switching schematic





LittleDiode supplies new, hard to find or obsolete electronic components and semiconductors all over the world.

With over two million different components listed you are sure to find the part you need.

Feel free to visit us today at our online store:

LittleDiode.com

Looking forward to providing you with the best possible service.