

CentralTM Semiconductor Corp.

145 Adams Avenue, Hauppauge, NY 11788 USA
Tel: (631) 435-1110 • Fax: (631) 435-1824

Manufacturers of World Class Discrete Semiconductors

2N2646
2N2647

SILICON UNIJUNCTION TRANSISTOR

JEDEC TO-18 CASE*

DESCRIPTION

The CENTRAL SEMICONDUCTOR 2N2646, 2N2647 types are silicon PN unijunction transistors designed for general purpose industrial applications.

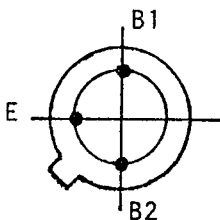
MAXIMUM RATINGS (TA=25°C unless otherwise noted)

	<u>SYMBOL</u>		<u>UNIT</u>
RMS Power Dissipation	PD (RMS)	300	mW
RMS Emitter Current	IE (RMS)	50	mA
Peak Pulse Emitter Current	iE	2.0	A
Interbase Voltage	VB2B1	35	V
Emitter Reverse Voltage	VB2E	30	V
Operating and Storage Junction Temperature	TJ, TSTG	-65 TO +150	°C

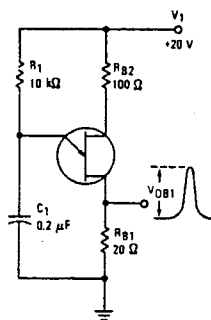
ELECTRICAL CHARACTERISTICS (TA=25°C unless otherwise noted)

<u>SYMBOL</u>	<u>TEST CONDITIONS</u>	2N2646		2N2647		<u>UNIT</u>
		<u>MIN</u>	<u>MAX</u>	<u>MIN</u>	<u>MAX</u>	
η	VB2B1=10V†	0.56	0.75	0.68	0.82	-
RBBO	VB2B1=3.0V, IE=0	4.7	9.1	4.7	9.1	kΩ
IB2(MOD)	VB2B1=10V, IE=50mA	15 TYP		15 TYP		mA
αRBBO	VB2B1=3.0V, TA=-65°C to +150°C	0.1	0.9	0.1	0.9	%/°C
VEB1(SAT)	VB2B1=10V, IE=50mA	3.5 TYP		3.5 TYP		V
IEO	VB2E=30V, IB1=0		12		0.2	μA
IP	VB2B1=25V		5.0		2.0	μA
IV	VB2B1=20V, RB2=100Ω	4.0	-	8.0	18	mA
VOB1	See test circuit below	3.0		6.0		V

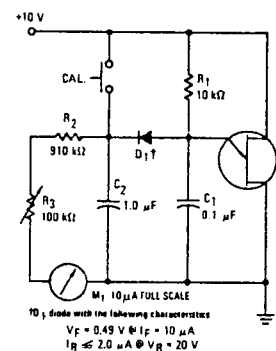
*Conforms to JEDEC TO-18 outline except for lead configuration.



VOB1 TEST CIRCUIT



†η TEST CIRCUIT





LittleDiode supplies new, hard to find or obsolete electronic components and semiconductors all over the world.

With over two million different components listed you are sure to find the part you need.

Feel free to visit us today at our online store:

LittleDiode.com

Looking forward to providing you with the best possible service.