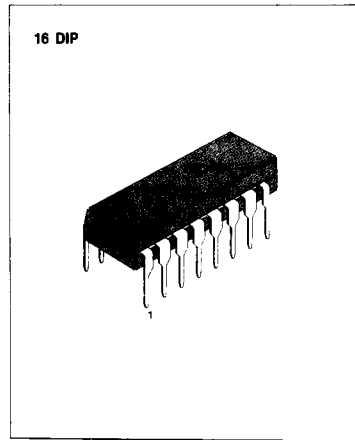


5-BAND GRAPHIC EQUALIZER AMPLIFIER

The KA2223 is a monolithic integrated circuit consisting of an operational amplifier with five resonant circuits and a active filter, and it is suitable for radio-cassette tape recorders, car stereos or music center audio systems.

FEATURES

- Tone control with independent adjustment of each band through an external capacitor.
- Gain control through an external variable resistor.
- Increasing the bands by adding resonant circuit or using two KA2223 in series.
- Low noise ($V_{NO} = 7\mu V$: Typ. Flat).
- Low distortion (THD=0.02% Typ. $f = 1\text{KHz}$ Flat).
- Large allowable input ($V_i = 2.3\text{V}$: Typ, $V_{CC} = 9\text{V}$, $f = 1\text{KHz}$ Flat).
- Operating supply voltage range: $V_{CC} = 5\text{V} \sim 13\text{V}$



ORDERING INFORMATION

Device	Package	Operating Temperature
KA2223	16 DIP	- 20°C ~ + 70°C

BLOCK DIAGRAM

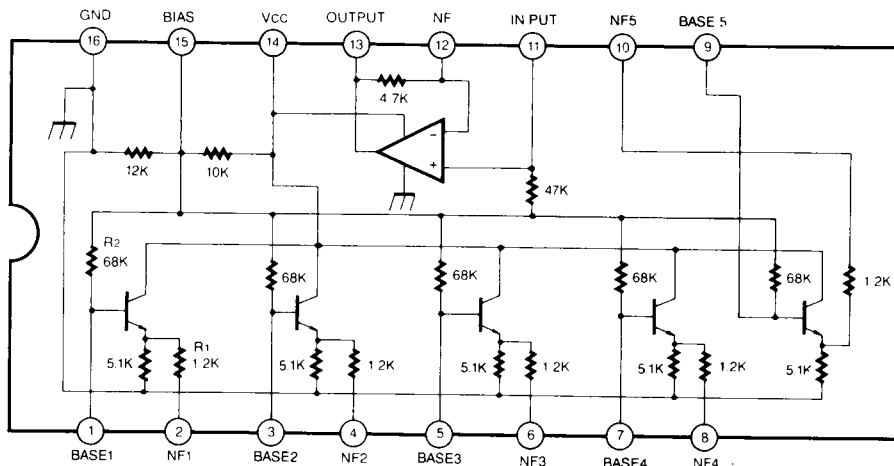


Fig. 1

ABSOLUTE MAXIMUM RATINGS ($T_a = 25^\circ\text{C}$)

Characteristic	Symbol	Value	Unit
Supply Voltage	V_{CC}	20	V
Power Dissipation	P_D	700	mW
Operating Temperature	T_{OPR}	-20 ~ +70	$^\circ\text{C}$
Storage Temperature	T_{STG}	-55 ~ +125	$^\circ\text{C}$

ELECTRICAL CHARACTERISTICS

($T_a = 25^\circ\text{C}$, $V_{CC} = 9\text{V}$ unless otherwise specified)

Characteristic	Symbol	Test		Min	Typ	Max	Unit			
		f(Hz)	Conditions							
Quiescent Circuit Current	I_{CCO}		$V_i = 0$	3.0	5.2	8.0	mA			
Voltage Gain	Flat	G_v (Flat)	1K	$V_i = -10\text{dBm}$	-3.8	-0.8	2.2	dB		
									108	dB
	Boost	G_v (Boost)	1.08K	$V_i = -10\text{dBm}$	8	10.5	12	dB		
									3.43K	dB
									10.8K	
									108	dB
	Cut	G_v (Cut)	1.08K	$V_i = -10\text{dBm}$	-12	-10.5	-8	dB		
									3.43K	dB
									10.8K	
									108	dB
Total Harmonic Distortion	THD	1K	$V_i = 1\text{V}$		0.02	0.1	%			
Output Noise Voltage	V_{NO}	Flat, Input Short $BW(-3\text{dB}) = 10\text{Hz} \sim 30\text{KHz}$			7.0	30	μV			

TEST CIRCUIT

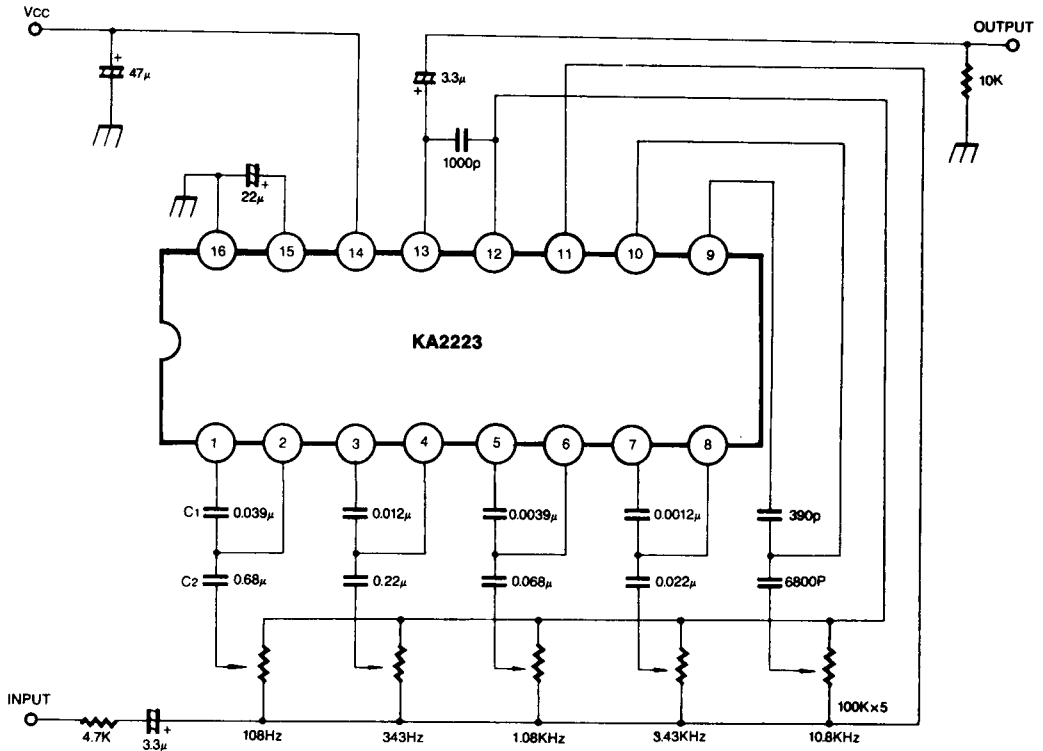


Fig. 2

$$\text{Resonant frequency } f_0 = \frac{1}{2\pi\sqrt{R_1 R_2 C_1 C_2}}$$

($R_1 = 1.2K$, $R_2 = 68K$ on-chip resistor)

APPLICATION CIRCUIT

1. 7 BAND

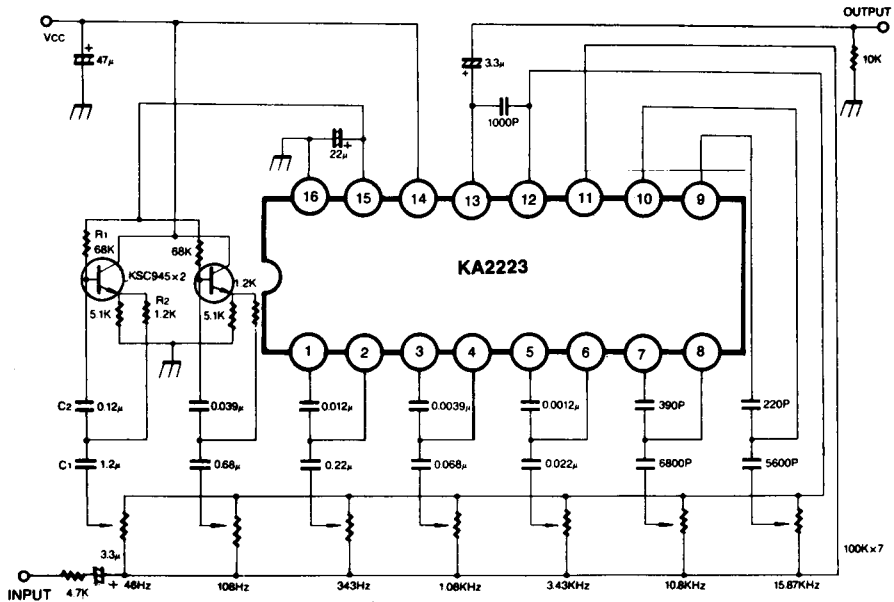


Fig. 3

2. 10 BAND

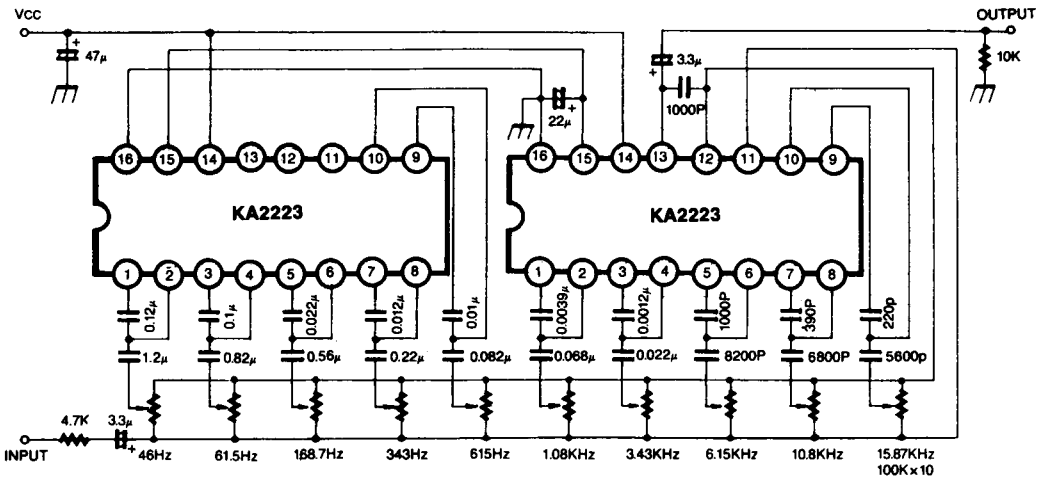


Fig. 4



LittleDiode supplies new, hard to find or obsolete electronic components and semiconductors all over the world.

With over two million different components listed you are sure to find the part you need.

Feel free to visit us today at our online store:

LittleDiode.com

Looking forward to providing you with the best possible service.