

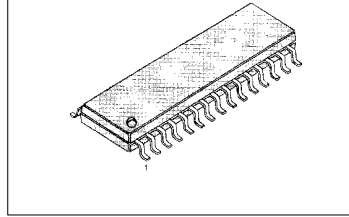
KA7302D

CDS, AGC, GAMMA CORRECTION

GENERAL DISCRIPTION

The KA7302D is a bipolar monolithic integrated circuit for CCD Color Video Camera, and then it provides functions of Correlated Double Sampling, Automatic Gain Control and Gamma Correction.

30-SSOP-375



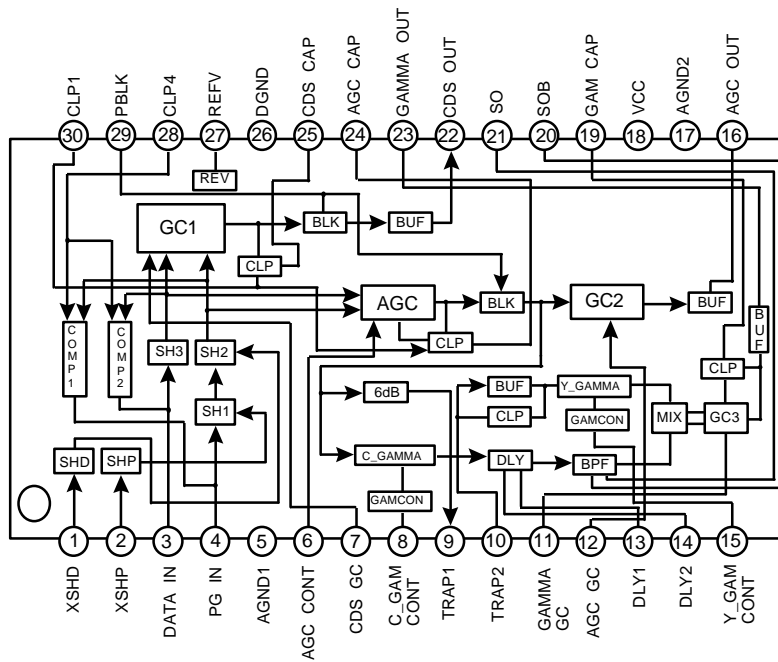
FEATURES

- CDS (Correlated Double Sampling)
- AGC (Automatic Gain Control)
- Gamma Compensation
- +5V Single Power Supply
- Low Power < 400 mW
- Dual Power Down Mode
 - AGC Part stand by mode (AGC OUT : GND)
- Maxmum Operational Frequency > 20 MHz

ORDERING INFORMATION

Device	Package	Operating Temperature
KA7302D	30-SSOP-375	-20°C ~ +75 °C

BLOCK DIAGRAM



PIN DESCRIPTION

No	Symbol	I/O	Description	Active
1	XSHD	I	Sample & Hold DATA Pulse	LOW
2	XSHP	I	Sample & Hold Pre - Charge Pulse	LOW
3	DATA IN	I	CCD Signal Input	
4	PG IN	I	CCD Signal Input	
5	AGND1	-	Analog Ground	
6	AGC CONT	I	AGC Gain Control	
7	CDS GC1	I	CDS Gain Control	
8	C γ CONT	I	C γ Gamma Control	
9	TRAP1	O	A Luminance trap filter is tied between this pin & Trap2	
10	TRAP2	I	Y γ Gamma Control	
11	γ GC3	I	GC3 Gain Control	
12	AGC GC2	I	GC2 Gain Control	
13	DLY1	I	Output for Delay (Chroma Signal)	
14	DLY2	O	Input for Delay (Chroma Signal)	
15	Y γ CONT	I	Y Gamma Curve Control	
16	AGC OUT	O	AGC Signal Output	
17	AGND2	-	Analog Ground	
18	VCC	-	Power Supply	
19	γ CAP	O	Gamma Clamp Capacitor	
20	SOB	O	Connected to BPF	
21	SO	O	Connected to BPF	
22	CDS OUT	O	CDS Signal Output	
23	γ OUT	O	Gamma Signal Output	
24	AGC CAP	O	AGC Clamp Capacitor	
25	CDS CAP	O	CDS Clamp Capacitor	
26	DGND	-	Digital Ground	
27	REFV	O	Reference Voltage Output	HIGH
28	CLP4	I	Clamp Pulse 4 Input	
29	PBLK	I	Pre - Blanking Pulse Input	LOW
30	CLP1	I	Clamp Pulse 1 Input	HIGH

* HIGH(H): 4.0V \uparrow , LOW(L): 4.0V \downarrow

ABSOLUTE MAXIMUM RATINGS (Ta = 25°C)

Characteristic	Symbol	Value	Unit
Power Source Voltage	Vcc	7	V
Power Dissipation	Pd	900	mW
Operating Temperature	Topr	-20 ~ 75	°C
Storage Temperature	Tstg	-65 ~ 150	°C

RECOMMENDED OPERATING CONDITIONS (Ta = 25°C)

Characteristic	Symbol	Value	Unit
Supply Voltage	Vcc	4.5 ~ 5.5	V

ELECTRICAL CHARACTERISTICS

(V_{cc} = 4.5 ~ 5.5 V, T_a = 25 °C)

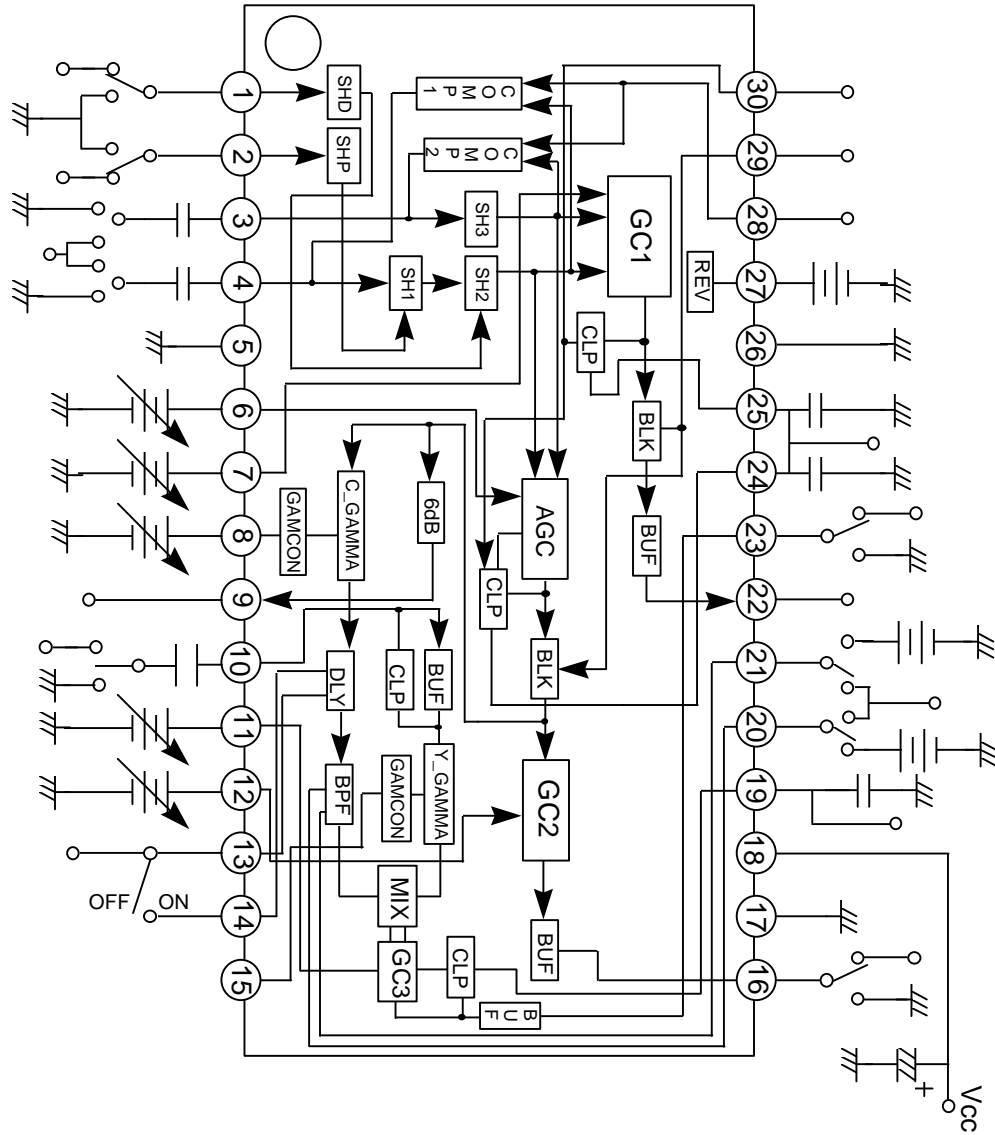
Characteristics	Symbol	Test Condition	Min	Typ	Max	Unit
SUPPLY CURRENT	ICCR1	AGC OUT & GAM OUT → OPEN V _{cc} =5V	61	73	88	mA
	ICC1	AGC OUT → GND V _{cc} =5V	55	64	78	mA
GC1 CONT.Min	GC1A Min	CDS OUT/DATA IN CDS GC=1.5V	-	-6	-4	dB
GC1 CONT.Max	GC1A Max	CDS OUT/DATA IN CDS GC=4.5V	14	18	-	dB
CDS OUT Maximum Voltage Swing	CDR1	DATA IN = 400mV (Peak to Peak)	2.0	-	-	V
GC1 AMP CMRR	CMR1	15.75KHz	-	-4.0	-36	dB
GC1 AMP Bandwidth	FC1A	10MHz	-3	-	-	dB
AGC CONT.Min	AGC1 Min	TRAP1 OUT/DATA IN AGC CONT = 1.5V Cal :AGC Gain -6dB	4.0	6.0	8.0	dB
AGC CONT.Max	AGC1 Max	TRAP1 OUT/DATA IN AGC CONT = 4.5V Cal: AGC Gain -6dB	30	32	-	dB
AGC AMP CMRR	CMRA	15.75KHz	-	-40	-36	dB
AGC AMP Bandwidth	FCA1	20MHz	-3	-	-	dB
GC3 AMP CMRR	CMR3	15.75KHz	-	-40	-36	dB
AGC AMP Bandwidth	FC3A	10MHz	-3	-	-	dB
GC3 CONT.Min	GC3A Min	Y OUT/SO Y GC=1.5V	-	-6	-4	dB
GC3 CONT.Max	GC3A Max	Y OUT/SO Y GC=4.5V	14	18	-	dB
Y OUT Maximum Voltage Swing	GDR1	SO Input = 400mV (Peak to Peak)	2.0	-	-	V

ELECTRICAL CHARACTERISTICS

(Vcc = 4.5 ~ 5.5 V , Ta = 25 °C)

Characteristics		Symbol	Test Condition	Min	Typ	Max	Unit
γ Y	γ Y1.0(Typ)	γ Y T.1	TRAP2 input=0.4Vpp Gamma GC=2.6V Measure : Gamma Output	400	525	650	mV
	γ Y2.0/ γ Y1.0	γ Y 2.0A	TRAP2 input =0.8Vpp Gamma GC = 2.6V Cal.:Gamma Output / γ Y T1	1.2	1.4	1.6	-
	γ Y3.0/ γ Y1.0	γ Y 3.0A	TRAP2 input =1.2Vpp Gamma GC = 2.6V Cal.:Gamma Output / γ Y T1	1.4	1.6	1.8	-
	γ Y0.5/ γ Y1.0	γ Y 0.5A	TRAP2 input =0.2Vpp Gamma GC = 2.6V Cal.:Gamma Output / γ Y T1	0.68	0.74	0.80	-
	γ Y0.5(Max)	γ Y Max	TRAP2 input =0.2/0.4Vpp Gamma GC = 2.6V Y_Gamcont = 1.8V Cal.:Gamma Output (0.2 Vpp / 0.4 Vpp)	0.78	0.85	0.92	-
	γ Y 0.5 (Min)	γ Y Min	TRAP2 input =0.2/0.4Vpp Gamma GC = 2.6V Y_Gamcont = 5.0V Cal.:Gamma Output (0.2 Vpp / 0.4 Vpp)	0.55	0.62	0.70	-
γ C	γ C 1.0 (Typ)	γ CT1 Typ.	TRAP1 output =0.8Vpp C_GAMCONT = 0.0V Measure, : DL1 Output	270	310	350	mV
	γ C 1.0 (Max)	γ CT1 Max	TRAP1 output =0.8Vpp C_GAMCONT = 1.8V Measure, : DL1 Output	300	340	380	mV
	γ C 1.0 (Min)	γ CT1 Min	TRAP1 output =0.8Vpp C_GAMCONT = 5.0V Measure, : DL1 Output	240	275	310	mV
	γ C 0.5/ γ C 1.0	γ C 0.5 A	TRAP1 output =0.4Vpp C_GAMCONT = 0.0V Measure, : DL1 Output CAL. : DL1 output / γ CT1 Typ.	0.5	0.6	0.7	-
	γ C 2.0 / γ C 1.0	γ C 2.0 A	TRAP1 output =1.6Vpp C_GAMCONT = 0.0V Measure, : DL1 Output CAL. : DL1 output / γ CT1 Typ.	1.38	1.55	1.72	-

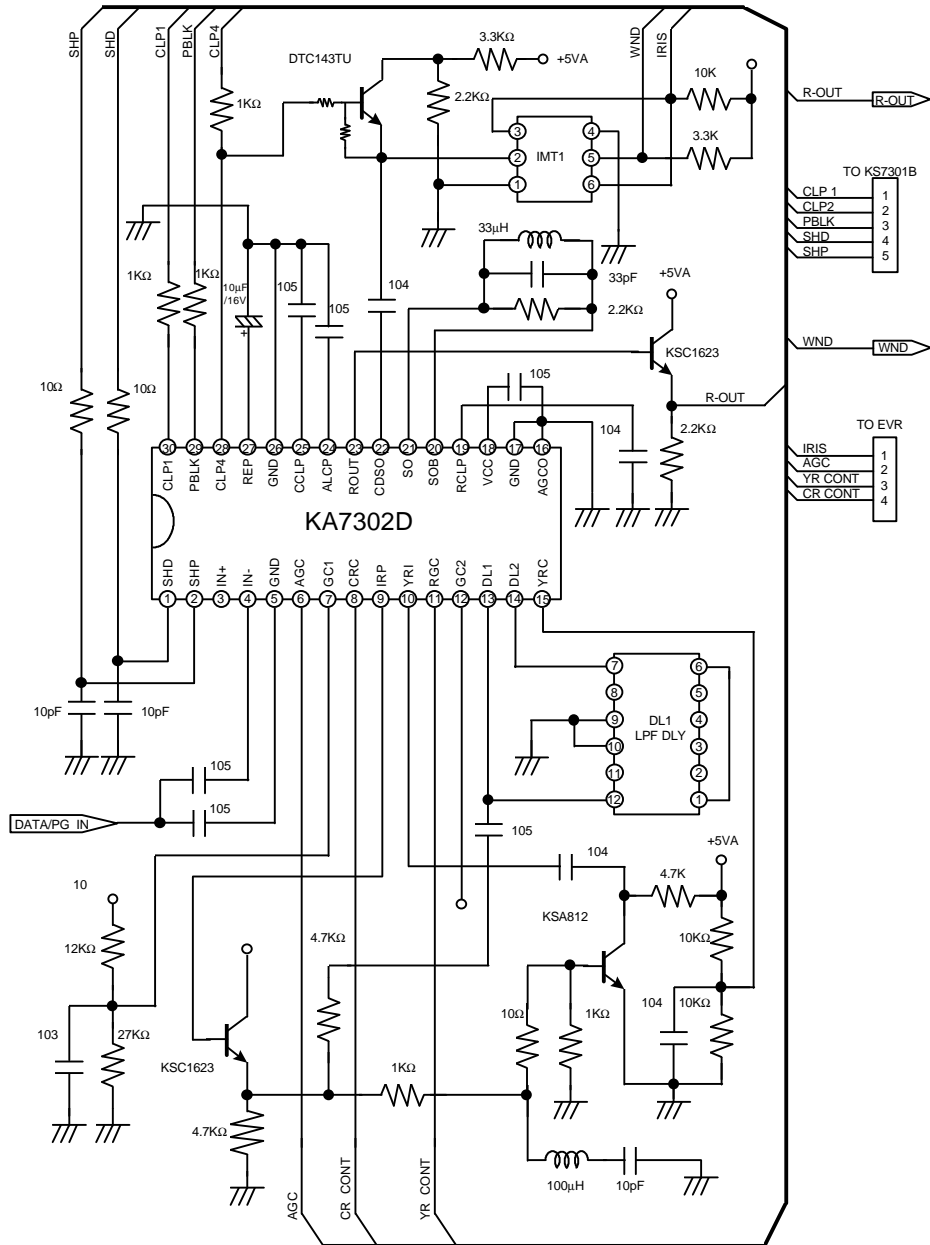
TEST CIRCUIT



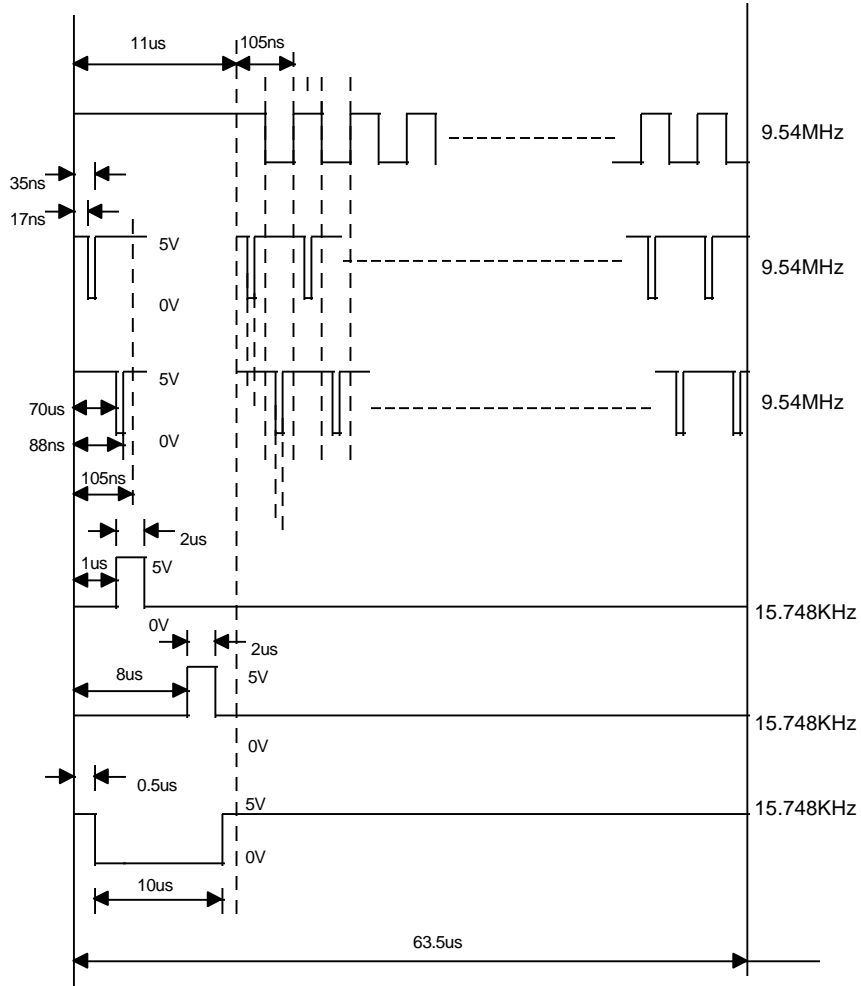
KA7302D

CDS, AGC, GAMMA CORRECTION

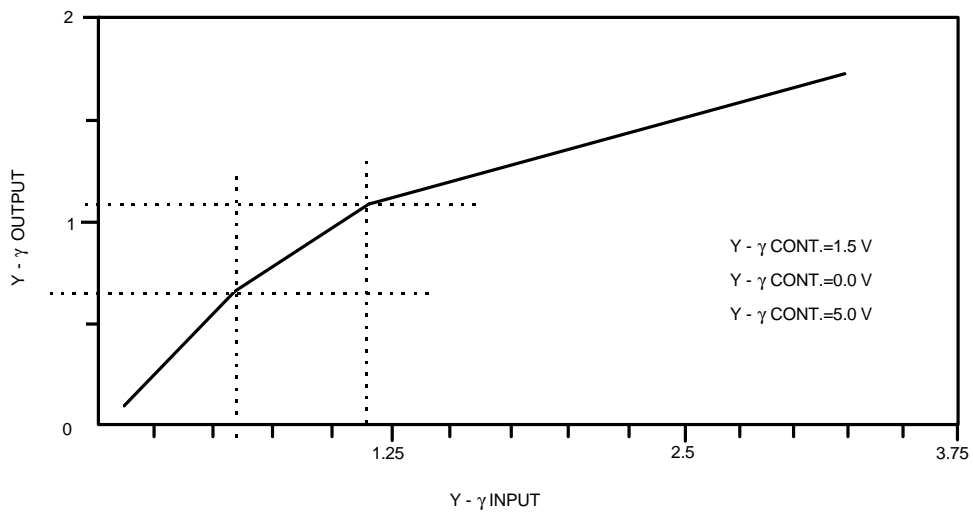
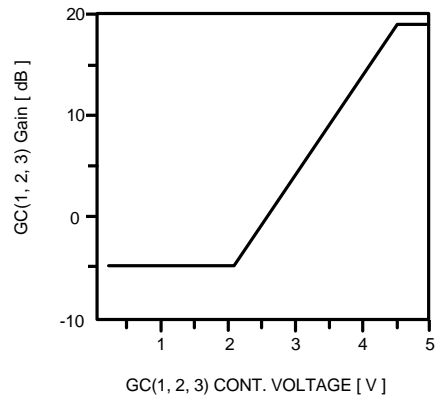
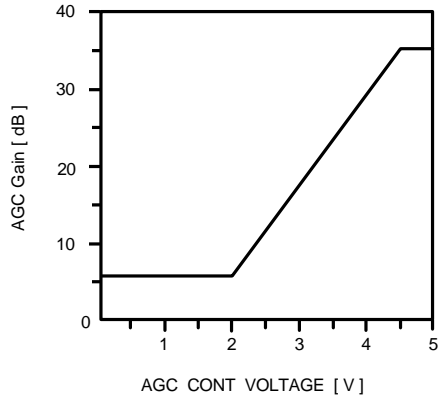
APPLICATION CIRCUIT



TIMING CHART



AMP CHARACTERISTIC GRAPHS



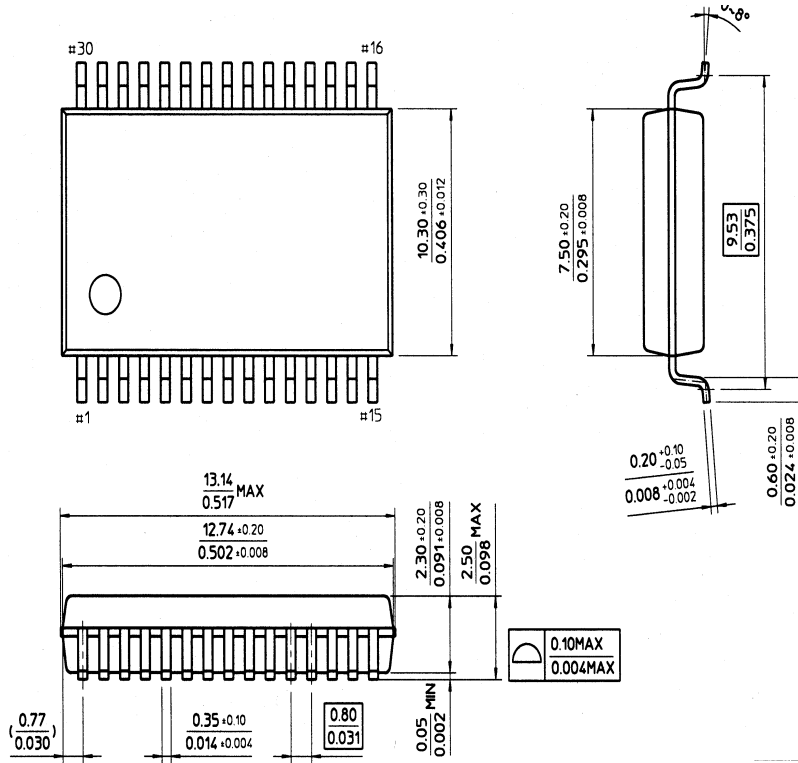
KA7302D

CDS, AGC, GAMMA CORRECTION

PACKAGE DIMENSION

30-SSOP-375

unit:mm





LittleDiode supplies new, hard to find or obsolete electronic components and semiconductors all over the world.

With over two million different components listed you are sure to find the part you need.

Feel free to visit us today at our online store:

LittleDiode.com

Looking forward to providing you with the best possible service.