

TOSHIBA Transistor Silicon PNP Epitaxial Type (PCT Process)

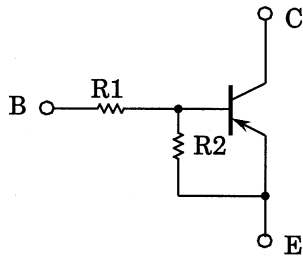
## RN2201, RN2202, RN2203 RN2204, RN2205, RN2206

Switching, Inverter Circuit, Interface Circuit  
And Driver Circuit Applications

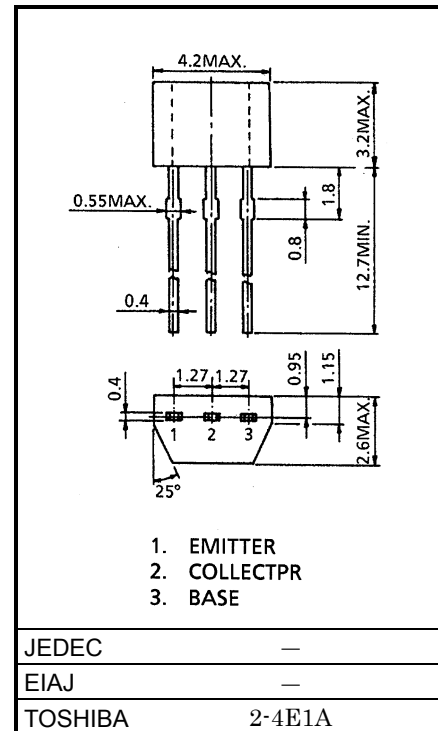
Unit in mm

- With built-in bias resistors
- Simplify circuit design
- Reduce a quantity of parts and manufacturing process
- Complementary to RN1201~RN1206

### Equivalent Circuit and Bias Resistor Values



Type No.	R1 (kΩ)	R2 (kΩ)
RN2201	4.7	4.7
RN2202	10	10
RN2203	22	22
RN2204	47	47
RN2205	2.2	47
RN2206	4.7	47



Weight: 0.13g

### Maximum Ratings (Ta = 25°C)

Characteristic	Symbol	Rating	Unit	
Collector-base voltage	RN2201~2206	$V_{CBO}$	-50	V
Collector-emitter voltage		$V_{CEO}$	-50	V
Emitter-base voltage	RN2201~2204	$V_{EBO}$	-10	V
	RN2205, 2206		-5	
Collector current	RN2201~2206	$I_C$	-100	mA
Collector power dissipation		$P_C$	300	mW
Junction temperature		$T_j$	150	°C
Storage temperature range		$T_{stg}$	-55~150	°C

961001EAA1

- TOSHIBA is continually working to improve the quality and the reliability of its products. Nevertheless, semiconductor devices in general can malfunction or fail due to their inherent electrical sensitivity and vulnerability to physical stress. It is the responsibility of the buyer, when utilizing TOSHIBA products, to observe standards of safety, and to avoid situations in which a malfunction or failure of a TOSHIBA product could cause loss of human life, bodily injury or damage to property. In developing your designs, please ensure that TOSHIBA products are used within specified operating ranges as set forth in the most recent products specifications. Also, please keep in mind the precautions and conditions set forth in the TOSHIBA Semiconductor Reliability Handbook.
- The information contained herein is presented only as a guide for the applications of our products. No responsibility is assumed by TOSHIBA CORPORATION for any infringements of intellectual property or other rights of the third parties which may result from its use. No license is granted by implication or otherwise under any intellectual property or other rights of TOSHIBA CORPORATION or others.
- The information contained herein is subject to change without notice.

**Electrical Characteristics (Ta = 25°C)**

Characteristic		Symbol	Test Circuit	Test Condition	Min	Typ.	Max	Unit
Collector cut-off current	RN2201~2206	I <sub>CBO</sub>	—	V <sub>CB</sub> = -50V, I <sub>E</sub> = 0	—	—	-100	nA
		I <sub>CEO</sub>	—	V <sub>CE</sub> = -50V, I <sub>B</sub> = 0	—	—	-500	
Emitter cut-off current	RN2201	I <sub>EBO</sub>	—	V <sub>EB</sub> = -10V, I <sub>C</sub> = 0	-0.82	—	-1.52	mA
	RN2202		—		-0.38	—	-0.71	
	RN2203		—		-0.17	—	-0.33	
	RN2204		—	-0.082	—	-0.15		
	RN2205		—	V <sub>EB</sub> = -5V, I <sub>C</sub> = 0	-0.078	—	-0.145	
	RN2206		—		-0.074	—	-0.138	
DC current gain	RN2201	h <sub>FE</sub>	—	V <sub>CE</sub> = -5V, I <sub>C</sub> = -10mA	30	—	—	—
	RN2202		—		50	—	—	
	RN2203		—		70	—	—	
	RN2204		—		80	—	—	
	RN2205		—		80	—	—	
	RN2206		—		80	—	—	
Collector-emitter saturation voltage	RN2201~2206	V <sub>CE(sat)</sub>	—	I <sub>C</sub> = -5mA, I <sub>B</sub> = -0.25mA	—	-0.1	-0.3	V
Input voltage (ON)	RN2201	V <sub>I(ON)</sub>	—	V <sub>CE</sub> = -0.2V, I <sub>C</sub> = -5mA	-1.1	—	-2.0	V
	RN2202		—		-1.2	—	-2.4	
	RN2203		—		-1.3	—	-3.0	
	RN2204		—		-1.5	—	-5.0	
	RN2205		—		-0.6	—	-1.1	
	RN2206		—		-0.7	—	-1.3	
Input voltage (OFF)	RN2201~2204	V <sub>I(OFF)</sub>	—	V <sub>CE</sub> = -5V, I <sub>C</sub> = -0.1mA	-1.0	—	-1.5	V
	RN2205, 2206		—		-0.5	—	-0.8	
Transition frequency	RN2201~2206	f <sub>T</sub>	—	V <sub>CE</sub> = -10V, I <sub>C</sub> = -5mA	—	200	—	MHz
Collector output capacitance	RN2201~2206	C <sub>ob</sub>	—	V <sub>CB</sub> = -10V, I <sub>E</sub> = 0, f = 1MHz	—	3	6	pF
Input resistor	RN2201	R <sub>1</sub>	—	—	3.29	4.7	6.11	kΩ
	RN2202		—		7	10	13	
	RN2203		—		15.4	22	28.6	
	RN2204		—		32.9	47	61.1	
	RN2205		—		1.54	2.2	2.86	
	RN2206		—		3.29	4.7	6.11	
Resistor ratio	RN2201~2204	R <sub>1/R2</sub>	—	—	0.9	1.0	1.1	—
	RN2205		—		0.0421	0.0468	0.0515	
	RN2206		—		0.09	0.1	0.11	

