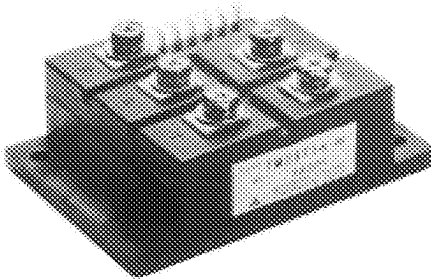


TM25T3A-M,-H

MEDIUM POWER GENERAL USE
INSULATED TYPE

TM25T3A-M,-H



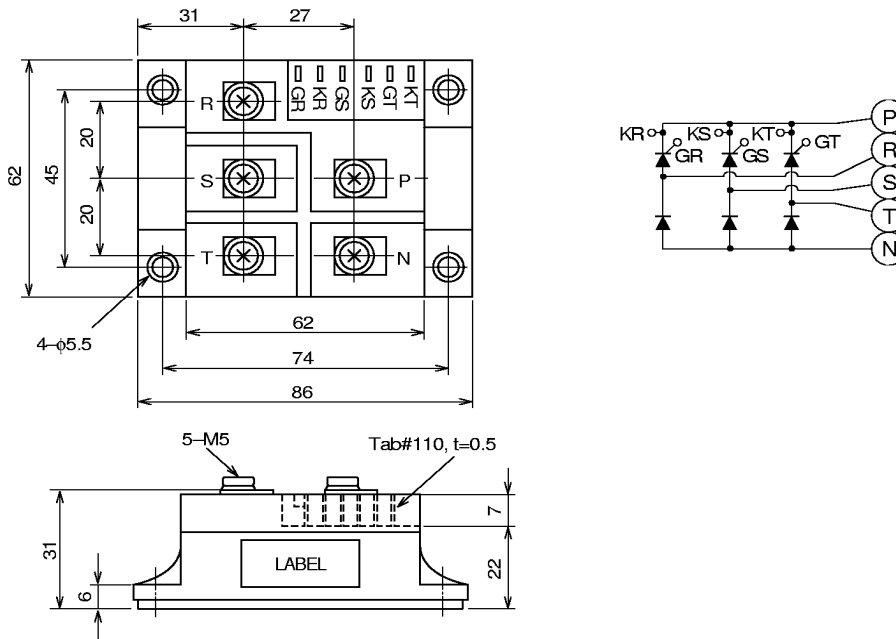
- **I_o** DC output current **60A**
 - **VRRM** Repetitive peak reverse voltage
..... **400/800V**
 - **VDRM** Repetitive peak off-state voltage
..... **400/800V**
 - **3 Phase Mix Bridge**
 - **Insulated Type**
 - **UL Recognized**
- Yellow Card No. E80276 (N)
File No. E80271

APPLICATION

DC motor control, NC equipment, AC motor control, contactless switches,
electric furnace temperature control, light dimmers

OUTLINE DRAWING & CIRCUIT DIAGRAM

Dimensions in mm



TM25T3A-M,-H

MEDIUM POWER GENERAL USE
INSULATED TYPE

ABSOLUTE MAXIMUM RATINGS

Symbol	Parameter	Voltage class		Unit
		M	H	
VRRM	Repetitive peak reverse voltage	400	800	V
VRSM	Non-repetitive peak reverse voltage	480	960	V
VR(DC)	DC reverse voltage	320	640	V
VDRM	Repetitive peak off-state voltage	400	800	V
VDSM	Non-repetitive peak off-state voltage	480	960	V
Vb(DC)	DC off-state voltage	320	640	V

Symbol	Parameter	Conditions	Ratings	Unit
Io	DC output current	3-phase fullwave rectified, TC=76.6°C	60	A
ITSM, IFSM	Surge (non-repetitive) current	One half cycle at 60Hz, peak value	500	A
I _{F1}	I _{F1} for fusing	Value for one cycle of surge current	1.0 x 10 ³	A ² s
di/dt	Critical rate of rise of on-state current	V _D =1/2V _{DRM} , I _G =0.5A, T _J =125°C	100	A/μs
P _{GM}	Peak gate power dissipation		5.0	W
P _{G(AV)}	Average gate power dissipation		0.5	W
V _{FGM}	Peak gate forward voltage		10	V
V _{VRGM}	Peak gate reverse voltage		5.0	V
I _{FGM}	Peak gate forward current		2.0	A
T _J	Junction temperature		-40~125	°C
T _{stg}	Storage temperature		-40~125	°C
V _{iso}	Isolation voltage	Charged part to case	2500	V
—	Mounting torque	Main terminal screw M5	1.47~1.96	N·m
			15~20	kg·cm
		Mounting screw M5	1.47~1.96	N·m
			15~20	kg·cm
—	Weight	Typical value	310	g

ELECTRICAL CHARACTERISTICS

Symbol	Parameter	Test conditions	Limits			Unit
			Min.	Typ.	Max.	
I _{RRM}	Repetitive peak reverse current	T _J =125°C, V _{RRM} applied	—	—	4.0	mA
I _{DRM}	Repetitive peak off-state current	T _J =125°C, V _{DRM} applied	—	—	4.0	mA
V _{TM} , V _{FM}	Forward voltage	T _J =125°C, I _{TM} =I _{FM} =75A, instantaneous meas.	—	—	1.4	V
dv/dt	Critical rate of rise of off-state voltage	T _J =125°C, V _D =2/3V _{DRM}	500	—	—	V/μs
V _{GT}	Gate trigger voltage	T _J =25°C, V _D =6V, R _L =2Ω	—	—	2.0	V
V _{GD}	Gate non-trigger voltage	T _J =125°C, V _D =1/2V _{DRM}	0.25	—	—	V
I _{GT}	Gate trigger current	T _J =25°C, V _D =6V, R _L =2Ω	10	—	50	mA
R _{th(j-c)}	Thermal resistance	Junction to case (per 1/6 module)	—	—	1.5	°C/W
R _{th(c-f)}	Contact thermal resistance	Case to fin, Conductive grease applied (per 1/6 module)	—	—	0.36	°C/W
—	Insulation resistance	Measured with a 500V megohmmeter between main terminal and case	10	—	—	MΩ

Note: Items of the above table applies to the Thyristor part and the Diode part as circled in the following tables.



TM25T3A-M,-H

MEDIUM POWER GENERAL USE
INSULATED TYPE

MAXIMUM RATINGS

Item	VRRM	VRSM	VR(DC)	VDRM	VDSM	Vd(DC)	IT(RMS)	IT(AV)	ITSM	I ² t	di/dt
							IF(RMS)	IF(AV)	IFSM		
Thyristor	○	○	○	○	○	○	○	○	○	○	○
Diode	○	○	○	—	—	—	○	○	○	○	—

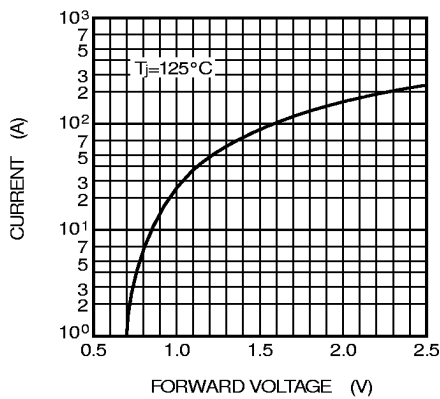
Item	PGM	PG(AV)	VFGM	IFGM	Tj	Tstg
Thyristor	○	○	○	○	○	○
Diode	—	—	—	—	○	○

ELECTRICAL CHARACTERISTICS

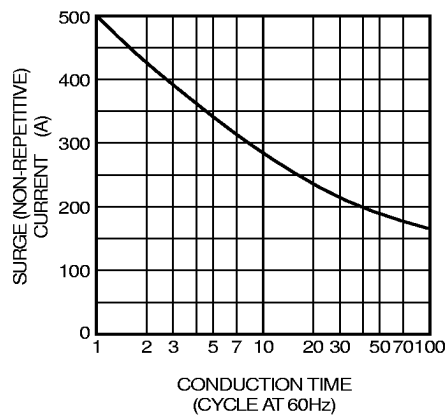
Item	IRRM	IDRM	VTM	dv/dt	VGT	VGD	IGT	Rth(j-c)	Rth(c-f)
			VFM						
Thyristor	○	○	○	○	○	○	○	○	○
Diode	○	—	○	—	—	—	—	○	○

PERFORMANCE CURVES

MAXIMUM FORWARD CHARACTERISTIC



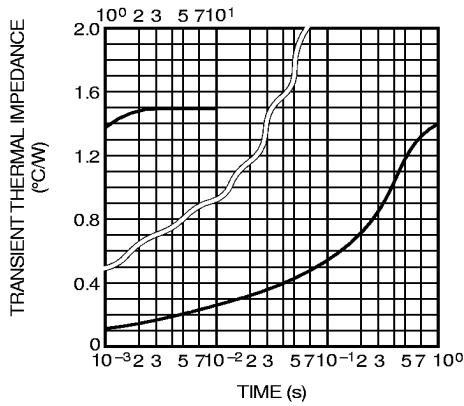
RATED SURGE (NON-REPETITIVE) CURRENT



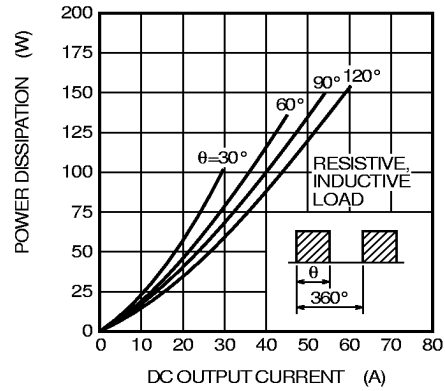
TM25T3A-M,-H

MEDIUM POWER GENERAL USE
INSULATED TYPE

MAXIMUM TRANSIENT THERMAL IMPEDANCE (JUNCTION TO CASE)
(PER SINGLE ELEMENT)



MAXIMUM POWER DISSIPATION
(THREE PHASE FULLWAVE RECTIFIED)



LIMITING VALUE OF THE DC OUTPUT CURRENT
(THREE PHASE FULLWAVE RECTIFIED)

