

MV-FZ Series

Extra long life (105°C 10000Hrs.)
Low impedance, High performance

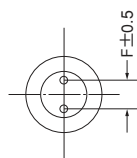
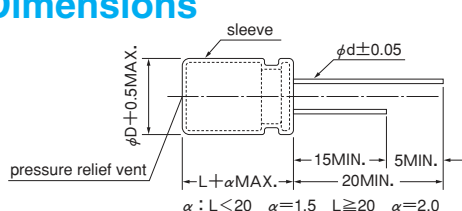


MV-FZ series has stable characteristics at the temperature of wide range (−55 to +105°C). Also MV-FZ series has low impedance at high frequency, long life and solvent proof (within 5 minutes).

Specifications

Items	Specifications				
Rated voltage (V)	10	16	25	35	50
Category temperature range (°C)	−55 to +105				
Capacitance tolerance (%)	±20				(120Hz/20°C)
Tangent of loss angle (tan δ) (MAX.)	0.20	0.16	0.14	0.12	0.10
Leakage current(L.C.)(μA/after 2min.)(MAX.)	The greater value of either 0.01CV or 3				
Impedance (120Hz) ratio at low temperature (MAX.)	Z _{−40°C} /Z _{20°C}	2	2	2	2
	Z _{−55°C} /Z _{20°C}	4	4	3	3
Endurance rated voltage applied	Test	105°C 10000hrs. (φ D ≤ 10, 5000hrs.)			
	ΔC/C	Within ±25% of the initial value			
	tan δ	≤ Twice the initial standard			
	L.C.	≤ The initial standard			

Dimensions



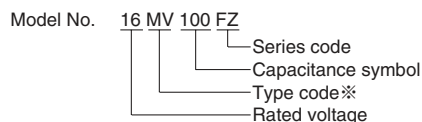
(Unit : mm)

φ D	8	10	12.5	16	18
F	3.5	5.0	5.0	7.5	7.5
φ d	0.6	0.6	0.6	0.8	0.8

Size List, Impedance, Maximum Permissible Ripple Current

V	10			16			25			35			50		
	Case Size φ D×L (mm)	Impedance (Ω MAX.) 20°C/100kHz	Ripple current (mA rms) 105°C/10k to 100kHz	Case Size φ D×L (mm)	Impedance (Ω MAX.) 20°C/100kHz	Ripple current (mA rms) 105°C/10k to 100kHz	Case Size φ D×L (mm)	Impedance (Ω MAX.) 20°C/100kHz	Ripple current (mA rms) 105°C/10k to 100kHz	Case Size φ D×L (mm)	Impedance (Ω MAX.) 20°C/100kHz	Ripple current (mA rms) 105°C/10k to 100kHz	Case Size φ D×L (mm)	Impedance (Ω MAX.) 20°C/100kHz	Ripple current (mA rms) 105°C/10k to 100kHz
10													8×11.5	0.77	180
22													8×11.5	0.51	230
33										8×11.5	0.47	240	10×12.5	0.30	390
47							8×11.5	0.43	250	8×12.5	0.43	260	10×16	0.24	540
100				8×11.5	0.43	250	10×12.5	0.28	400	10×16	0.26	470	12.5×20	0.13	880
220	8×12.5	0.32	380	10×12.5	0.26	420	10×20	0.17	560	12.5×20	0.14	720	16×25	0.060	1250
330	10×12.5	0.26	500	10×20	0.19	550	10×20	0.15	630	12.5×25	0.094	950	16×25	0.051	1400
470	10×16	0.15	600	10×20	0.13	700	12.5×25	0.068	900	16×25	0.060	1300	16×30	0.043	1500
1000	12.5×20	0.085	1000	12.5×25	0.051	1100	16×25	0.051	1350	18×30	0.043	1500			
2200	16×25	0.051	1450	16×30	0.043	1600	18×35.5	0.034	1800						
3300	16×30	0.038	1700	18×35.5	0.034	1900									
4700	18×35.5	0.034	2050												

Left figure ; Impedance (Ω MAX. at 100kHz, 20°C), Right figure ; MAX. ripple current (mA r.m.s. at 10k to 100kHz, 105°C)



※Type code

Environment-friendly capacitors	Sn-Pb lead finishing
Pb free lead finishing	PVC sleeve
Pb free PET sleeve	
ME	MV