

SPECIFICATION

Device Name : POWER MOSFET
 Type Name : 2SK2877-01
 Spec. No. :

This material and the information herein is the property of Fuji Electric Co.,Ltd. They shall be neither reproduced, copied, lent, or disclosed in any way whatsoever for the use of any third party nor used for the manufacturing purposes without the express written consent of Fuji Electric Co.,Ltd.

Fuji Electric Co.,Ltd.
 Matsumoto Factory

	DATE	NAME	APPROVED	
DRAWN				
CHECKED				

DWG. NO.

1/2

This material and the information herein is the property of Fuji Electric Co., Ltd. They shall be neither reproduced, copied, lent, or disclosed in any way whatsoever for the use of any third party nor used for the manufacturing purposes without the express written consent of Fuji Electric Co., Ltd.

- 1.Scope This specifies Fuji Power MOSFET 2SK2877-01
- 2.Construction N-Channel enhancement mode power MOSFET
- 3.Applications for Switching
- 4.Outview TO-3P Outview See to 5/12 page

5.Absolute Maximum Ratings at Tc=25°C (unless otherwise specified)

Description	Symbol	Characteristics	Unit	Remarks
Drain-Source Voltage	V _{DS}	500	V	
Continuous Drain Current	I _D	±6	A	
Pulsed Drain Current	I _{DP}	±24	A	
Gate-Source Voltage	V _{GS}	±35	V	
Repétitive or non-repétitive	I _{AR}	6	A	T _{ch} ≤ 150°C
Maximum Avalanche Energy	E _{AV}	213.4	mJ	*1
Maximum Power Dissipation	P _D	60	W	
Operating and Storage	T _{ch}	150	°C	
Temperature range	T _{stg}	-55 to +150	°C	

*1 L=10.9mH, Vcc=50V

6.Electrical Characteristics at Tc=25°C (unless otherwise specified)

Static Ratings

Description	Symbol	Conditions	min.	typ.	max.	Unit
Drain-Source Breakdown Voltage	BV _{DSS}	I _D =1mA V _{GS} =0V	500	-	-	V
Gate Threshold Voltage	V _{GS(th)}	I _D =1mA V _{DS} =V _{GS}	3.5	4.0	4.5	V
Zero Gate Voltage Drain Current	I _{DSS}	V _{DS} =500V T _{ch} =25°C	-	10	500	μA
		V _{GS} =0V T _{ch} =125°C	-	0.2	1.0	mA
Gate-Source Leakage Current	I _{GSS}	V _{GS} =±35V V _{DS} =0V	-	10	100	nA
Drain-Source On-State Resistance	R _{DS(on)}	I _D =3A V _{GS} =10V	-	1.25	1.5	Ω

This material and the information herein is the property of Fuji Electric Co., Ltd. They shall be neither reproduced, copied, lent, or disclosed in any way whatsoever for the use of any third party nor used for the manufacturing purposes without the express written consent of Fuji Electric Co., Ltd.

Dynamic Ratings

Description	Symbol	Conditions	min.	typ.	max.	Unit
Forward Transconductance	g_{fs}	$I_D=3A$ $V_{DS}=25V$	2	4	-	S
Input Capacitance	C_{iss}	$V_{DS}=25V$	-	540	810	pF
Output Capacitance	C_{oss}	$V_{GS}=0V$	-	100	150	
Reverse Transfer Capacitance	C_{rss}	$f=1MHz$	-	45	70	
Turn-On Time	$t_{d(on)}$	$V_{ce}=300V$	-	13	20	ns
	t_r	$V_{GS}=10V$	-	30	45	
Turn-Off Time	$t_{d(off)}$	$I_D=6A$	-	40	60	
	t_f	$R_{GS}=10\Omega$	-	25	40	

Reverse Diode

Description	Symbol	Conditions	min.	typ.	max.	Unit
Avalanche Capability	I_{AV}	$L=10.9mH$ $T_{ch}=25^\circ C$ See Fig.1 and Fig.2	6	-	-	A
Diode Forward On-Voltage	V_{SD}	$I_F=2 \times I_{DR}$ $V_{GS}=0V$ $T_{ch}=25^\circ C$	-	1.0	1.5	V
Reverse Recovery Time	t_{rr}	$I_F=I_{DR}$	-	450	-	ns
Reverse Recovery Charge	Q_{rr}	$-di/dt=100A/\mu s$ $T_{ch}=25^\circ C$	-	3.2	-	μC

7. Thermal Resistance

Description	Symbol	min.	typ.	max.	Unit
Channel to Case	$R_{th(ch-c)}$			4.17	$^\circ C/W$
Channel to Ambient	$R_{th(ch-a)}$			35.0	$^\circ C/W$

Fig.1 Test circuit

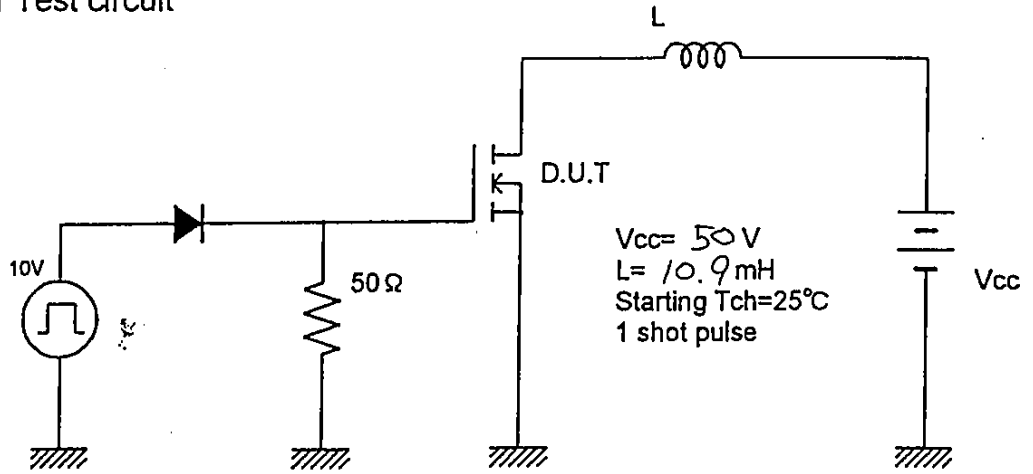
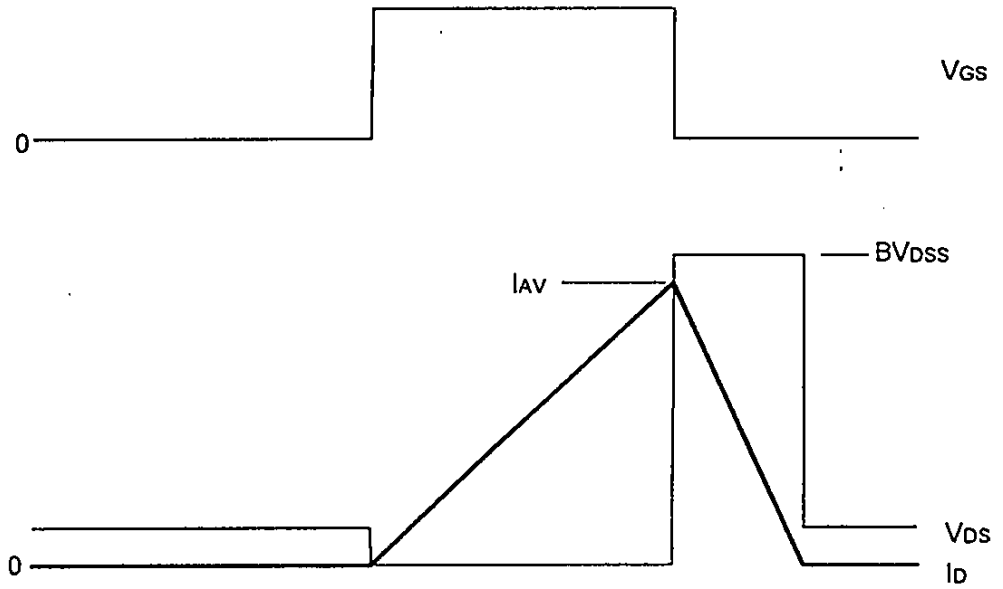


Fig.2 Operating waveforms

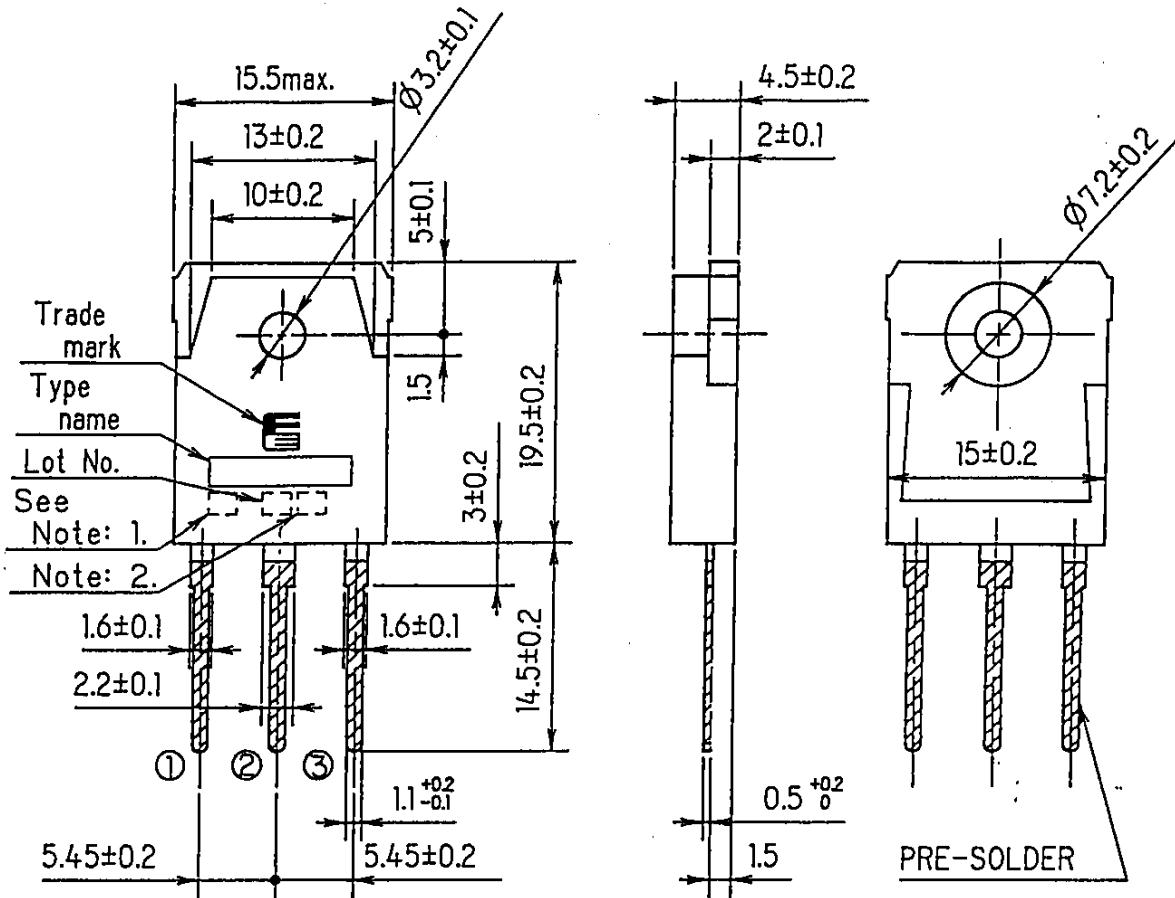


This material and the information herein is the property of Fuji Electric Co.,Ltd. They shall be neither reproduced, copied, lent, or disclosed in any way whatsoever for the use of any third party nor used for the manufacturing purposes without the express written consent of Fuji Electric Co.,Ltd.

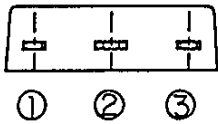
FUJI POWER MOS FET

TYPE :

This material and the information herein is the property of Fuji Electric Co. Ltd. They shall be neither reproduced, copied, lent, or disclosed in any way whatsoever for the use of any third party nor used for the manufacturing purposes without the express written consent of Fuji Electric Co., Ltd.



DIMENSIONS ARE IN MILLIMETERS.



CONNECTION

- ① GATE
- ② DRAIN
- ③ SOURCE

Note: 1. $V_{GS(TH)}$ selected code.
 Note: 2. Guaranteed mark of avalanche ruggedness.

JEDEC : TO-247
 EIAJ : SC-65

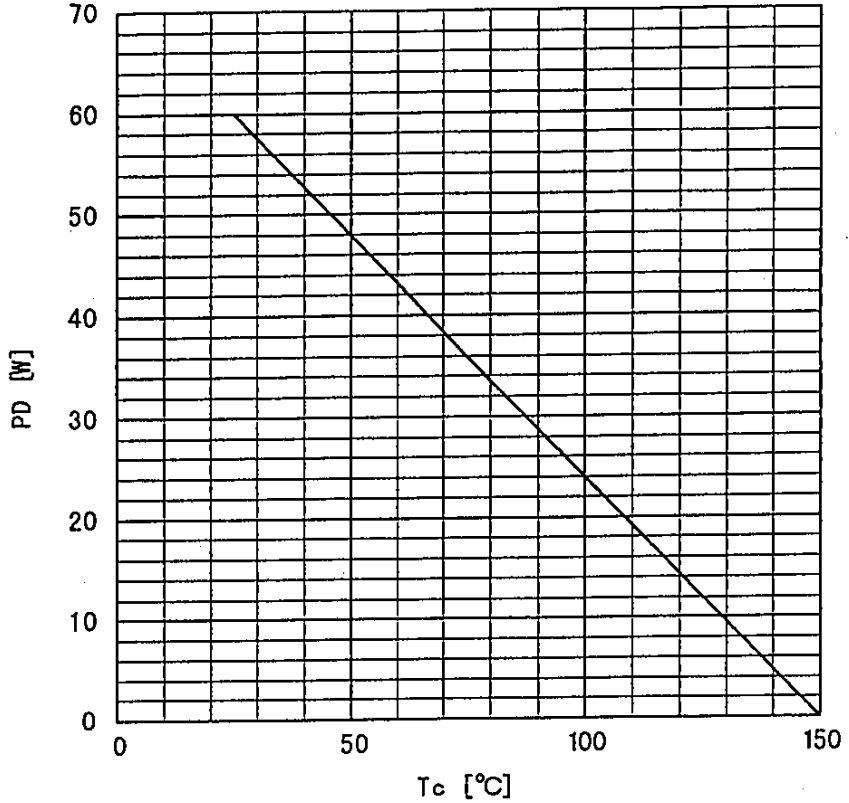
Fuji Electric Co., Ltd.

DWG. NO.

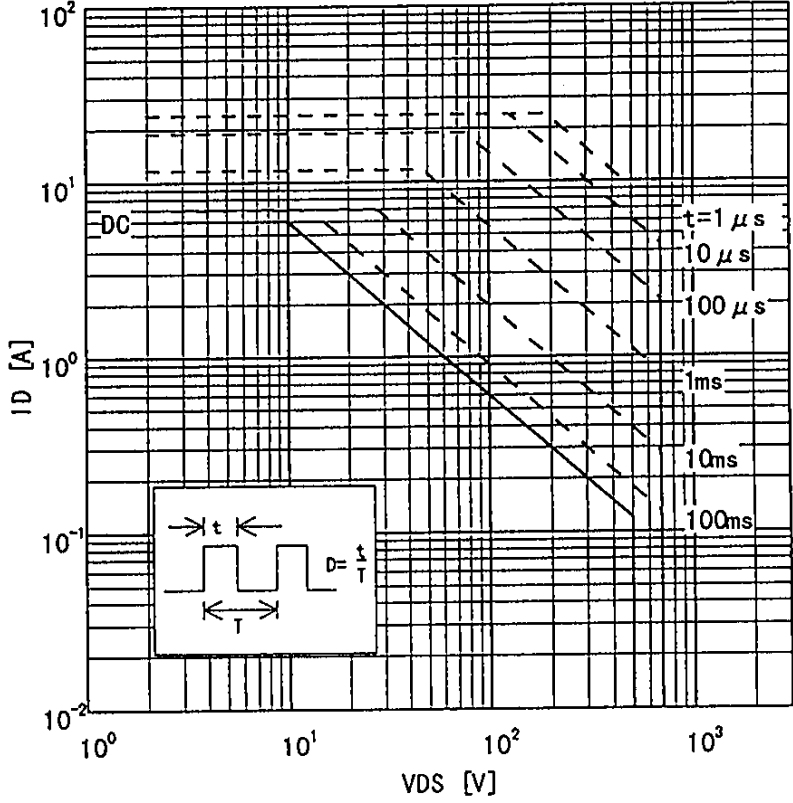
5/12

This material and the information herein is the property of Fuji Electric Co., Ltd. They shall be neither reproduced, copied, lent, or disclosed in any way whatsoever for the use of any third party nor used for the manufacturing purposes without the express written consent of Fuji Electric Co., Ltd.

Power Dissipation
 $PD=f(T_c)$

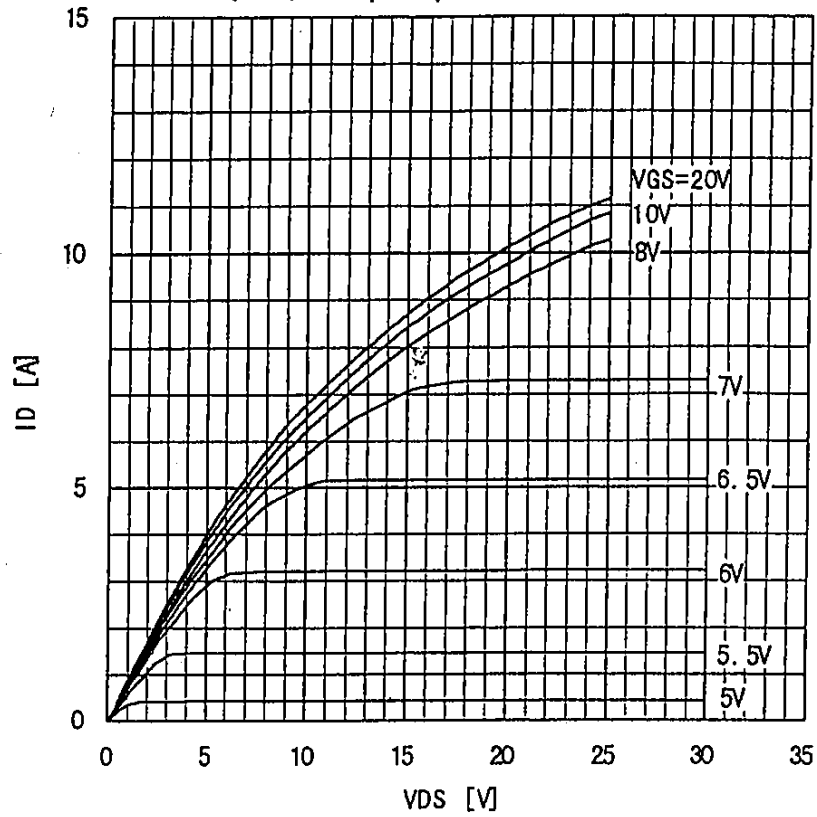


Safe operating area
 $ID=f(V_{DS}) : D=0.01, T_c=25^\circ C$

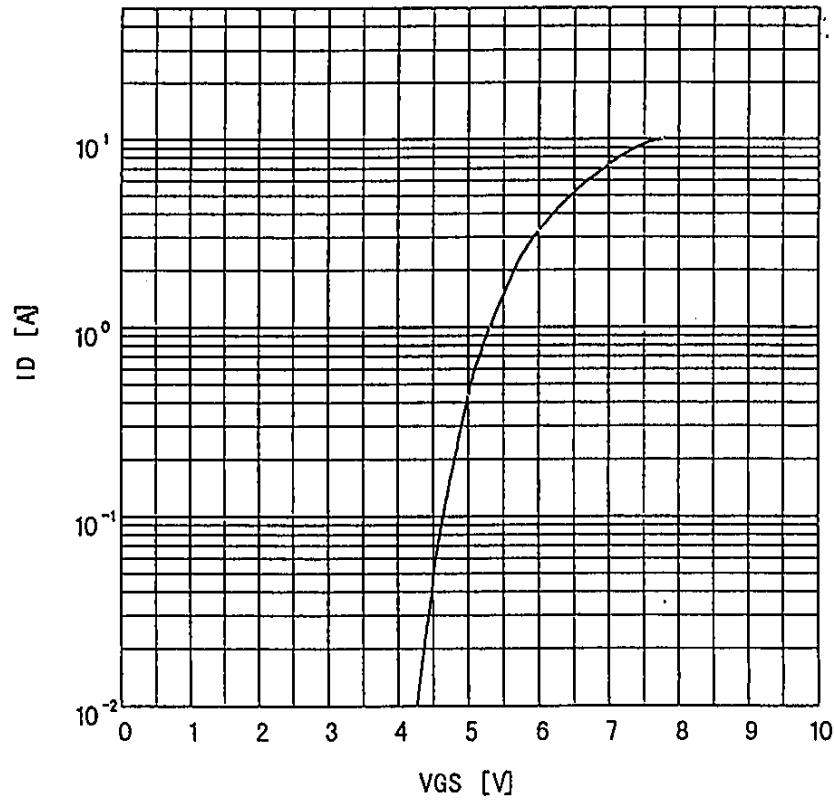


This material and the information herein is the property of Fuji Electric Co., Ltd. They shall be neither reproduced, copied, lent, or disclosed in any way whatsoever for the use of any third party nor used for the manufacturing purposes without the express written consent of Fuji Electric Co., Ltd.

Typical output characteristics
 $I_D = f(V_{DS}) : 80 \mu s$ pulse test, $T_c = 25^\circ C$

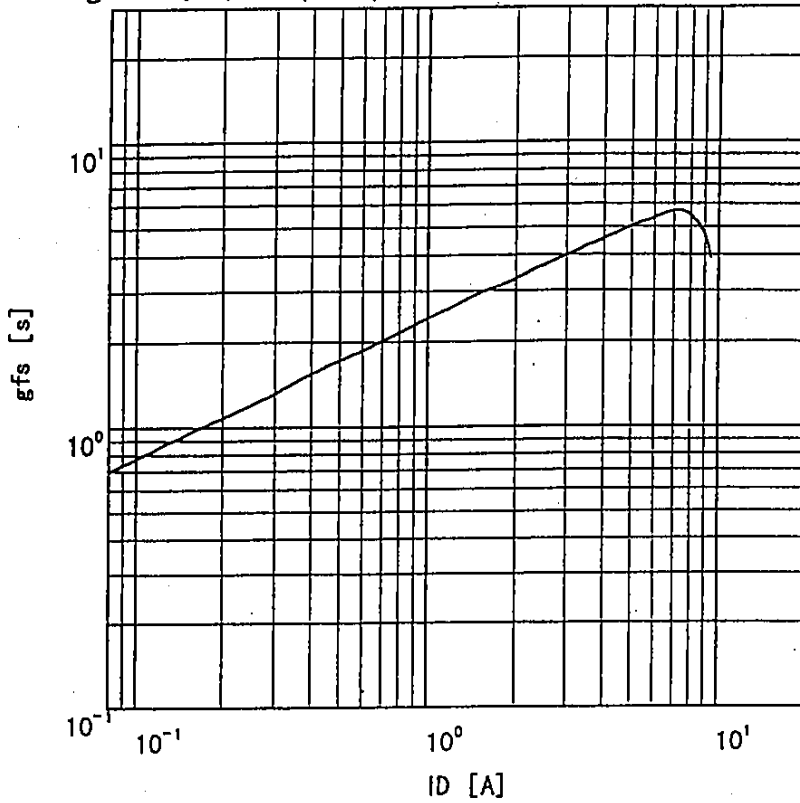


Typical transfer characteristic
 $I_D = f(V_{GS}) : 80 \mu s$ pulse test, $V_{DS} = 25V$, $T_{ch} = 25^\circ C$

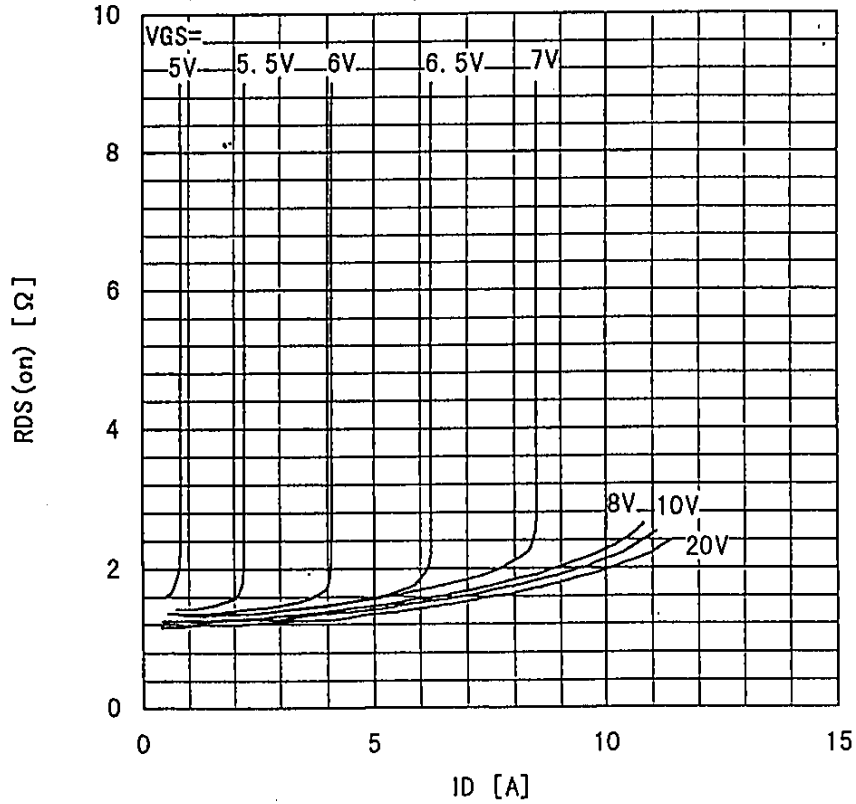


This material and the information herein is the property of Fuji Electric Co., Ltd. They shall be neither reproduced, copied, lent, or disclosed in any way whatsoever for the use of any third party nor used for the manufacturing purposes without the express written consent of Fuji Electric Co., Ltd.

Typical forward transconductance
 $g_{fs}=f(I_D)$: $80\mu s$ pulse test, $V_{DS}=25V$, $T_{ch}=25^\circ C$

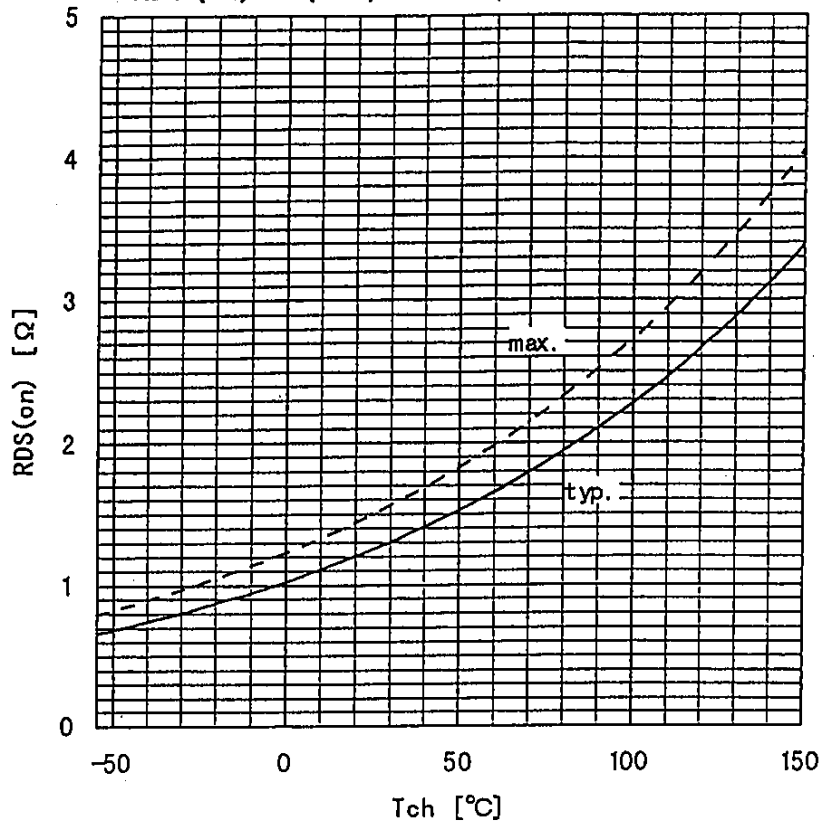


Typical drain-source on-state resistance
 $R_{DS(on)}=f(I_D)$: $80\mu s$ pulse test, $T_c=25^\circ C$

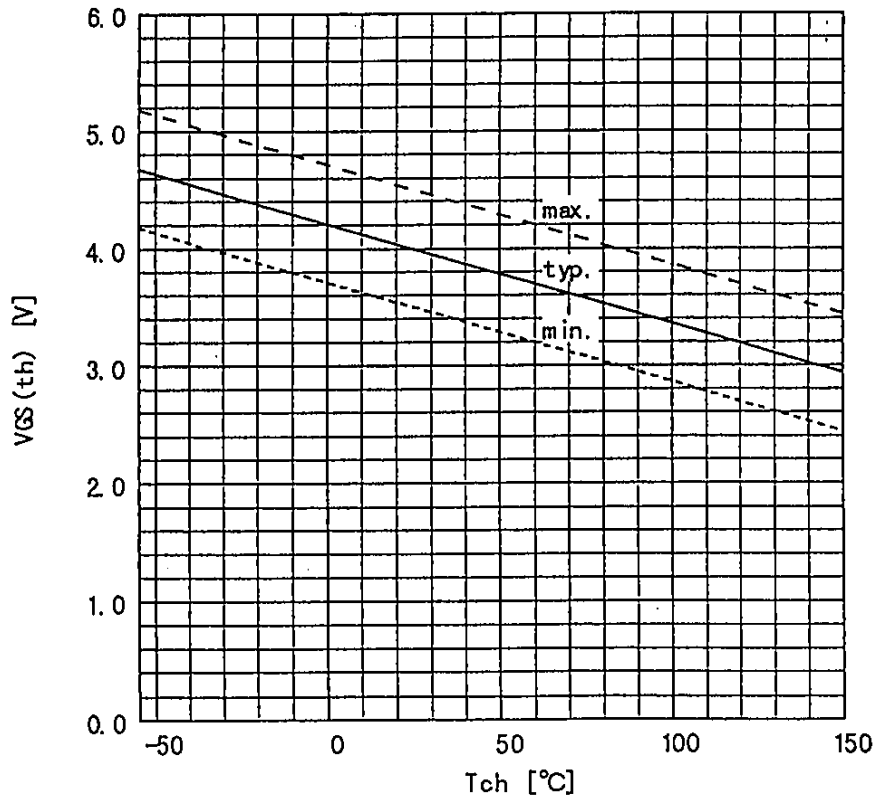


This material and the information herein is the property of Fuji Electric Co., Ltd. They shall be neither reproduced, copied, lent, or disclosed in any way whatsoever for the use of any third party nor used for the manufacturing purposes without the express written consent of Fuji Electric Co., Ltd.

Drain-source on-state resistance
 $R_{DS(on)} = f(T_{ch}) : I_D = 3A, V_{GS} = 10V$

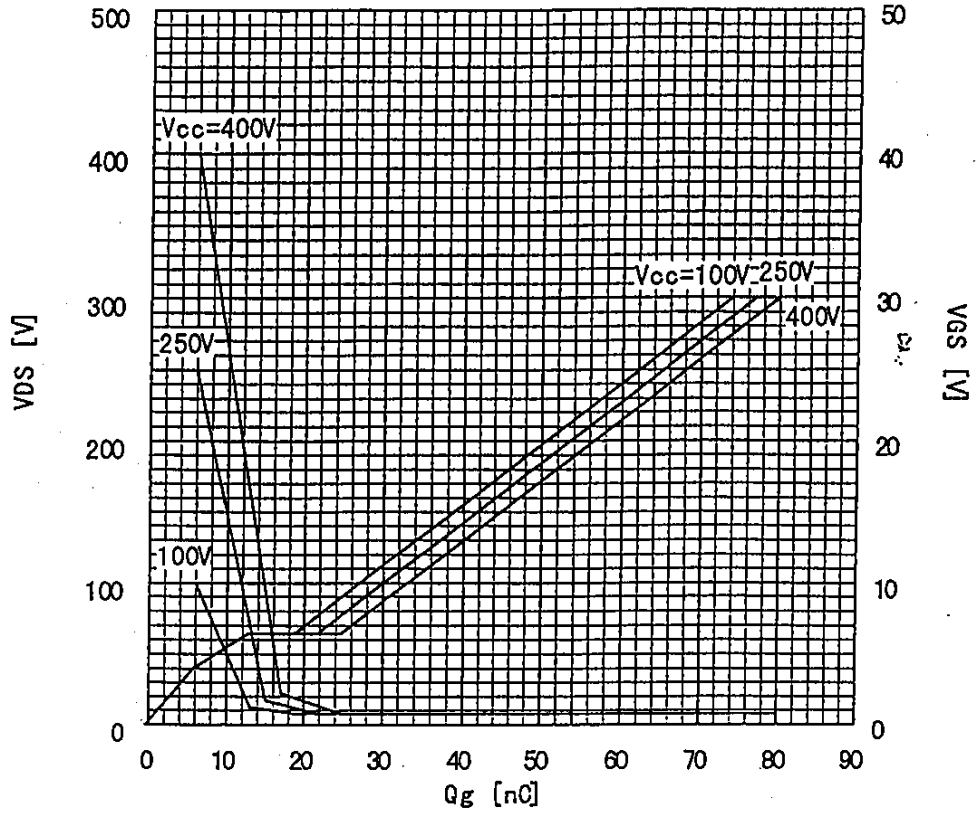


Gate threshold voltage
 $V_{GS(th)} = f(T_{ch}) : I_D = 1mA, V_{DS} = V_{GS}$

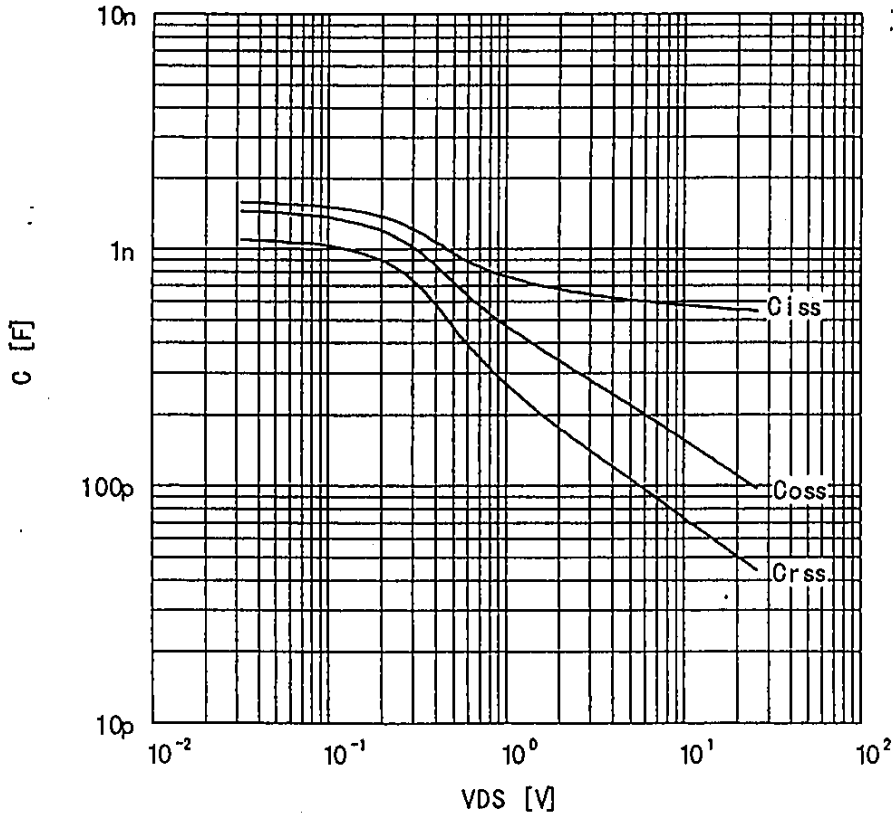


This material and the information herein is the property of Fuji Electric Co., Ltd. They shall be neither reproduced, copied, lent, or disclosed in any way whatsoever for the use of any third party nor used for the manufacturing purposes without the express written consent of Fuji Electric Co., Ltd.

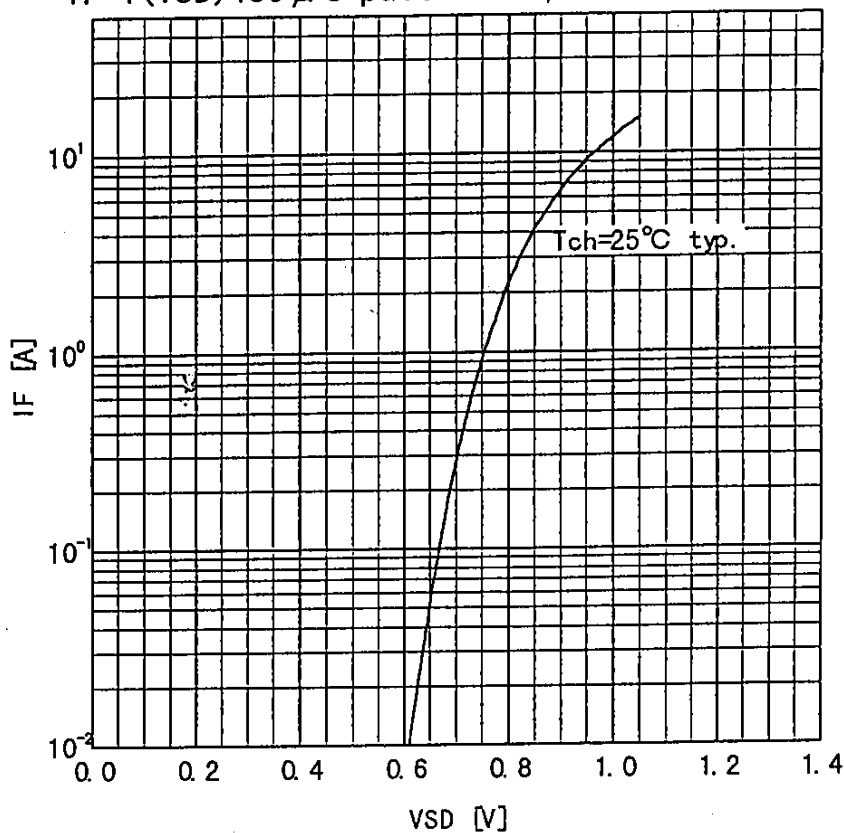
Typical gate charge characteristic
 $V_{GS} = f(Q_g) : I_D = 6A, T_c = 25^\circ C$



Typical capacitances
 $C = f(V_{DS}) : V_{GS} = 0V, f = 1MHz$

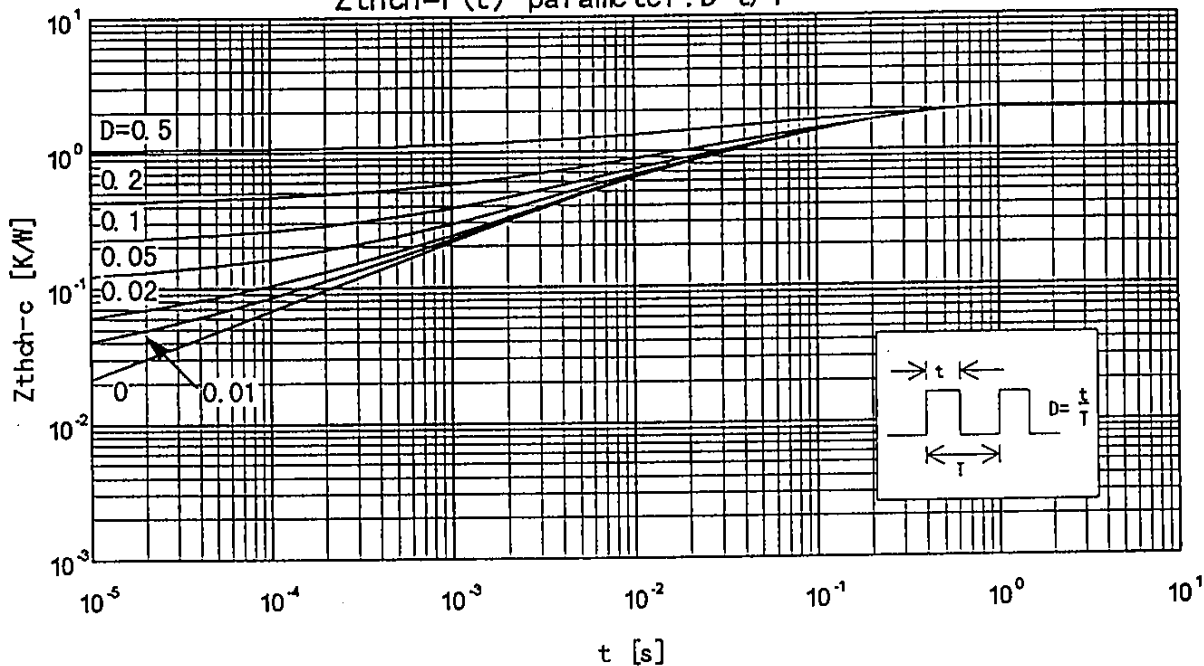


Forward characteristic of reverse of diode
 $I_F = f(V_{SD}) : 80 \mu s$ pulses test, $V_{GS} = 0V$



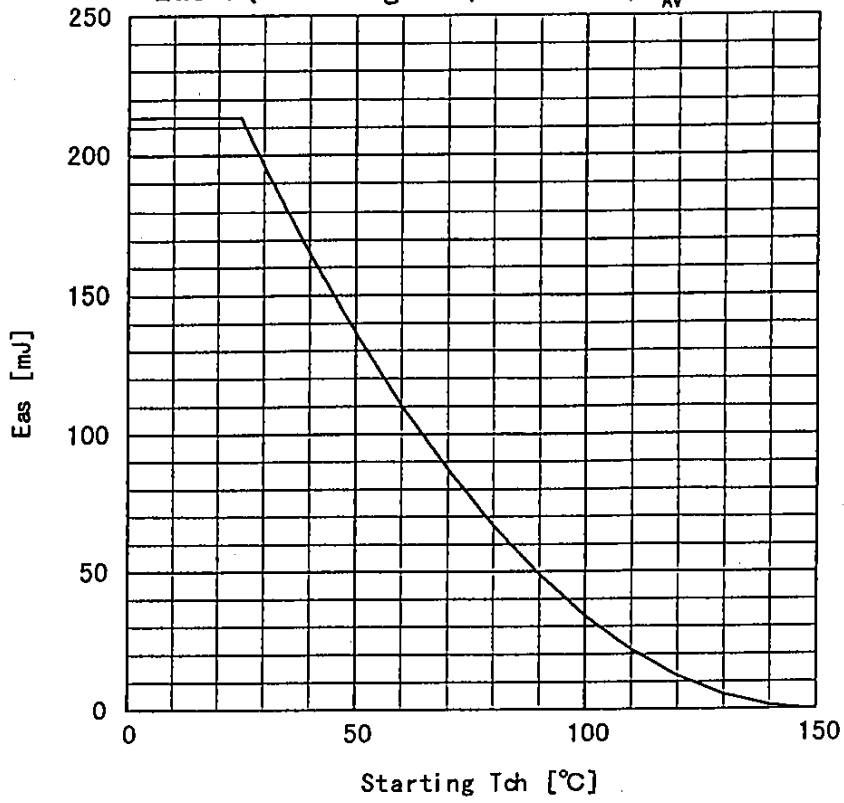
This material and the information herein is the property of Fuji Electric Co., Ltd. They shall be neither reproduced, copied, sent, or disclosed in any way whatsoever for the use of any third party nor used for the manufacturing purposes without the express written consent of Fuji Electric Co., Ltd.

Transient thermal impedance
 $Z_{thch} = f(t)$ parameter: $D = t/T$



This material and the information herein is the property of Fuji Electric Co., Ltd. They shall be neither reproduced, copied, lent, or disclosed in any way whatsoever for the use of any third party nor used for the manufacturing purposes without the express written consent of Fuji Electric Co., Ltd.

Avalanche energy derating
 $E_{as} = f(\text{starting } T_{ch}) : V_{CC} = 50V, I_{AV} = 6A$



Fuji Electric Co., Ltd.

DWG. NO.

12/12