



November 1999  
Revised November 1999

74VCXH16244 Low Voltage 16-Bit Buffer/Line Driver with Bushold

## 74VCXH16244 Low Voltage 16-Bit Buffer/Line Driver with Bushold (Preliminary)

### General Description

The VCXH16244 contains sixteen non-inverting buffers with 3-STATE outputs to be employed as a memory and address driver, clock driver, or bus oriented transmitter/receiver. The device is nibble (4-bit) controlled. Each nibble has separate 3-STATE control inputs which can be shorted together for full 16-bit operation.

The VCXH16244 data inputs include active bushold circuitry, eliminating the need for external pull-up resistors to hold unused or floating data inputs at a valid logic level.

The 74VCXH16244 is designed for low voltage (1.65V to 3.6V)  $V_{CC}$  applications with output capability up to 3.6V.

The 74VCXH16244 is fabricated with an advanced CMOS technology to achieve high speed operation while maintaining low CMOS power dissipation.

### Features

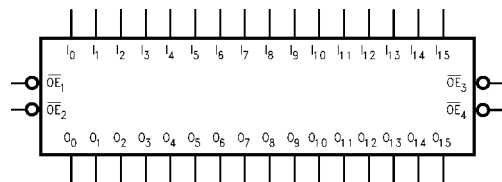
- 1.65V–3.6V  $V_{CC}$  supply operation
- 3.6V tolerant control inputs and outputs
- Bushold on data inputs eliminating the need for external pull-up/pull-down resistors
- $t_{PD}$ 
  - 2.5 ns max for 3.0V to 3.6V  $V_{CC}$
  - 3.0 ns max for 2.3V to 2.7V  $V_{CC}$
  - 6.0 ns max for 1.65V to 1.95V  $V_{CC}$
- Static Drive ( $I_{OH}/I_{OL}$ )
  - ±24 mA @ 3.0V  $V_{CC}$
  - ±18 mA @ 2.3V  $V_{CC}$
  - ±6 mA @ 1.65V  $V_{CC}$
- Uses patented noise/EMI reduction circuitry
- Latch-up performance exceeds 300 mA
- ESD performance:
  - Human body model > 2000V
  - Machine model > 200V

### Ordering Code:

Order Number	Package Number	Package Description
74VCXH16244MTD	MTD48	48-Lead Thin Shrink Small Outline Package (TSSOP), JEDEC MO-153, 6.1mm Wide

Devices also available in Tape and Reel. Specify by appending the suffix letter "X" to the ordering code.

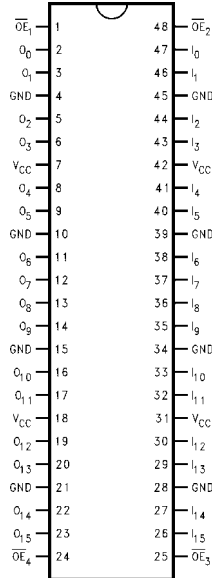
### Logic Symbol



### Pin Descriptions

Pin Names	Description
$\overline{OE}_n$	Output Enable Input (Active LOW)
$I_0-I_{15}$	Bushold Inputs
$O_0-O_{15}$	Outputs

Connection Diagram



Truth Tables

Inputs		Outputs
$\overline{OE}_1$	$I_0-I_3$	$O_0-O_3$
L	L	L
L	H	H
H	X	Z

Inputs		Outputs
$\overline{OE}_3$	$I_8-I_{11}$	$O_8-O_{11}$
L	L	L
L	H	H
H	X	Z

Inputs		Outputs
$\overline{OE}_2$	$I_4-I_7$	$O_4-O_7$
L	L	L
L	H	H
H	X	Z

Inputs		Outputs
$\overline{OE}_4$	$I_{12}-I_{15}$	$O_{12}-O_{15}$
L	L	L
L	H	H
H	X	Z

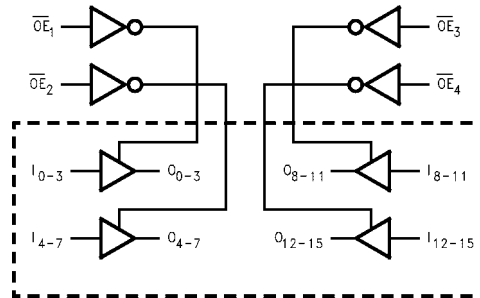
H = HIGH Voltage Level  
 L = LOW Voltage Level  
 X = Immaterial (HIGH or LOW, inputs may not float)  
 Z = High Impedance

Functional Description

The 74VCXH16244 contains sixteen non-inverting buffers with 3-STATE outputs. The device is nibble (4 bits) controlled with each nibble functioning identically, but independent of each other. The control pins may be shorted together to obtain full 16-bit operation. The 3-STATE out-

puts are controlled by an Output Enable ( $\overline{OE}_n$ ) input. When  $\overline{OE}_n$  is LOW, the outputs are in the 2-state mode. When  $\overline{OE}_n$  is HIGH, the standard outputs are in the high impedance mode but this does not interfere with entering new data into the inputs.

Logic Diagram



Absolute Maximum Ratings (Note 1)		Recommended Operating Conditions (Note 3)	
Supply Voltage ( $V_{CC}$ )	-0.5V to +4.6V	Power Supply	
DC Input Voltage ( $V_I$ )		Operating	1.65V to 3.6V
$\overline{OE}_n$	-0.5V to 4.6V	Data Retention Only	1.2V to 3.6V
$I_0 - I_{15}$	-0.5V to $V_{CC} + 0.5V$	Input Voltage	-0.3V to $V_{CC}$
Output Voltage ( $V_O$ )		Output Voltage ( $V_O$ )	
Outputs 3-STATED	-0.5V to +4.6V	Output in Active States	0V to $V_{CC}$
Outputs Active (Note 2)	-0.5V to $V_{CC} + 0.5V$	Output in 3-STATE	0.0V to 3.6V
DC Input Diode Current ( $I_{IK}$ )		Output Current in $I_{OH}/I_{OL}$	
$V_I < 0V$	-50 mA	$V_{CC} = 3.0V$ to 3.6V	$\pm 24$ mA
DC Output Diode Current ( $I_{OK}$ )		$V_{CC} = 2.3V$ to 2.7V	$\pm 18$ mA
$V_O < 0V$	-50 mA	$V_{CC} = 1.65V$ to 2.3V	$\pm 6$ mA
$V_O > V_{CC}$	+50 mA	Free Air Operating Temperature ( $T_A$ )	-40°C to +85°C
DC Output Source/Sink Current ( $I_{OH}/I_{OL}$ )	$\pm 50$ mA	Minimum Input Edge Rate ( $\Delta t/\Delta V$ )	
DC $V_{CC}$ or GND Current per Supply Pin ( $I_{CC}$ or GND)	$\pm 100$ mA	$V_{IN} = 0.8V$ to 2.0V, $V_{CC} = 3.0V$	10 ns/V
Storage Temperature Range ( $T_{STG}$ )	-65°C to +150°C	<b>Note 1:</b> The Absolute Maximum Ratings are those values beyond which the safety of the device cannot be guaranteed. The device should not be operated at these limits. The parametric values defined in the Electrical Characteristics tables are not guaranteed at the Absolute Maximum Ratings. The "Recommended Operating Conditions" table will define the conditions for actual device operation. <b>Note 2:</b> $I_0$ Absolute Maximum Rating must be observed. <b>Note 3:</b> Floating or unused control inputs must be held HIGH or LOW.	

**DC Electrical Characteristics (2.7V <  $V_{CC}$  ≤ 3.6V)**

Symbol	Parameter	Conditions	$V_{CC}$ (V)	Min	Max	Units
$V_{IH}$	HIGH Level Input Voltage		2.7-3.6	2.0		V
$V_{IL}$	LOW Level Input Voltage		2.7-3.6		0.8	V
$V_{OH}$	HIGH Level Output Voltage	$I_{OH} = -100 \mu A$	2.7-3.6	$V_{CC} - 0.2$		V
		$I_{OH} = -12$ mA	2.7	2.2		V
		$I_{OH} = -18$ mA	3.0	2.4		V
		$I_{OH} = -24$ mA	3.0	2.2		V
$V_{OL}$	LOW Level Output Voltage	$I_{OL} = 100 \mu A$	2.7-3.6		0.2	V
		$I_{OL} = 12$ mA	2.7		0.4	V
		$I_{OL} = 18$ mA	3.0		0.4	V
		$I_{OL} = 24$ mA	3.0		0.55	V
$I_I$	Input Leakage Current	Control Pins	$0 \leq V_I \leq 3.6V$	2.7-3.6		$\pm 5.0$ $\mu A$
		Data Pins	$0 \leq V_I \leq V_{CC}$	2.7-3.6		$\pm 5.0$ $\mu A$
$I_{I(HOLD)}$	Bushold Input Minimum Drive Hold Current	$V_{IN} = 0.8V$	3.0	75		$\mu A$
		$V_{IN} = 2.0V$	3.0	-75		$\mu A$
$I_{I(OD)}$	Bushold Input Over-Drive Current to Change State	(Note 4)	3.6	450		$\mu A$
		(Note 5)	3.6	-450		$\mu A$
$I_{OZ}$	3-STATE Output Leakage	$0 \leq V_O \leq 3.6V$ $V_I = V_{IH}$ or $V_{IL}$	2.7-3.6		$\pm 10$	$\mu A$
$I_{OFF}$	Power-OFF Leakage Current	$0 \leq (V_O) \leq 3.6V$	0		10	$\mu A$
$I_{CC}$	Quiescent Supply Current	$V_I = V_{CC}$ or GND	2.7-3.6		20	$\mu A$
		$V_{CC} \leq (V_O) \leq 3.6V$ (Note 6)	2.7-3.6		$\pm 20$	$\mu A$
$\Delta I_{CC}$	Increase in $I_{CC}$ per Input	$V_{IH} = V_{CC} - 0.6V$	2.7-3.6		750	$\mu A$

**Note 4:** An external driver must source at least the specified current to switch from LOW-to-HIGH.

**Note 5:** An external driver must sink at least the specified current to switch from HIGH-to-LOW.

**Note 6:** Outputs disabled or 3-STATE only.

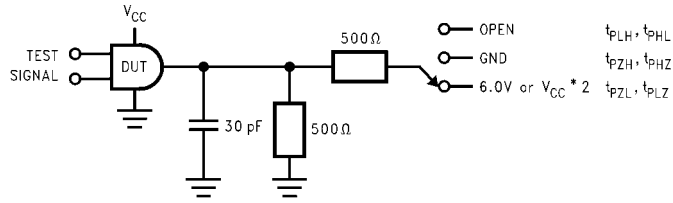
74VCXH16244

DC Electrical Characteristics (2.3V ≤ V <sub>CC</sub> ≤ 2.7V)							
Symbol	Parameter		Conditions	V <sub>CC</sub> (V)	Min	Max	Units
V <sub>IH</sub>	HIGH Level Input Voltage			2.3–2.7	1.6		V
V <sub>IL</sub>	LOW Level Input Voltage			2.3–2.7		0.7	V
V <sub>OH</sub>	HIGH Level Output Voltage		I <sub>OH</sub> = –100 μA	2.3–2.7	V <sub>CC</sub> – 0.2		V
			I <sub>OH</sub> = –6 mA	2.3	2.0		V
			I <sub>OH</sub> = –12 mA	2.3	1.8		V
			I <sub>OH</sub> = –18 mA	2.3	1.7		V
V <sub>OL</sub>	LOW Level Output Voltage		I <sub>OL</sub> = 100 μA	2.3–2.7		0.2	V
			I <sub>OL</sub> = 12 mA	2.3		0.4	V
			I <sub>OL</sub> = 18 mA	2.3		0.6	V
I <sub>I</sub>	Input Leakage Current	Control Pins	0 ≤ V <sub>I</sub> ≤ 3.6V	2.3–2.7		±5.0	μA
		Data Pins	0 ≤ V <sub>I</sub> ≤ V <sub>CC</sub>	2.3–2.7		±5.0	μA
I <sub>I(HOLD)</sub>	Bushold Input Minimum	V <sub>IN</sub> = 0.7V		2.3	45		μA
	Drive Hold Current	V <sub>IN</sub> = 1.6V		2.3	–45		
I <sub>I(OD)</sub>	Bushold Input Over-Drive Current to Change State	(Note 7)		2.7	300		μA
		(Note 8)		2.7	–300		
I <sub>OZ</sub>	3-STATE Output Leakage		0 ≤ V <sub>O</sub> ≤ 3.6V V <sub>I</sub> = V <sub>IH</sub> or V <sub>IL</sub>	2.3–2.7		±10	μA
I <sub>OFF</sub>	Power-OFF Leakage Current		0 ≤ (V <sub>O</sub> ) ≤ 3.6V	0		10	μA
I <sub>CC</sub>	Quiescent Supply Current		V <sub>I</sub> = V <sub>CC</sub> or GND	2.3–2.7		20	μA
			V <sub>CC</sub> ≤ (V <sub>O</sub> ) ≤ 3.6V (Note 9)	2.3–2.7		±20	μA
<p><b>Note 7:</b> An external driver must source at least the specified current to switch from LOW-to-HIGH.  <b>Note 8:</b> An external driver must sink at least the specified current to switch from HIGH-to-LOW.  <b>Note 9:</b> Outputs disabled or 3-STATE only.</p>							
DC Electrical Characteristics (1.65V ≤ V <sub>CC</sub> < 2.3V)							
Symbol	Parameter		Conditions	V <sub>CC</sub> (V)	Min	Max	Units
V <sub>IH</sub>	HIGH Level Input Voltage			1.65–2.3	0.65 × V <sub>CC</sub>		V
V <sub>IL</sub>	LOW Level Input Voltage			1.65–2.3		0.35 × V <sub>CC</sub>	V
V <sub>OH</sub>	HIGH Level Output Voltage		I <sub>OH</sub> = –100 μA	1.65–2.3	V <sub>CC</sub> – 0.2		V
			I <sub>OH</sub> = –6 mA	1.65	1.25		V
V <sub>OL</sub>	LOW Level Output Voltage		I <sub>OL</sub> = 100 μA	1.65–2.3		0.2	V
			I <sub>OL</sub> = 6 mA	1.65		0.3	V
I <sub>I</sub>	Input Leakage Current	Control Pins	0 ≤ V <sub>I</sub> ≤ 3.6V	1.65–2.3		±5.0	μA
		Data Pins	0 ≤ V <sub>I</sub> ≤ V <sub>CC</sub>	1.65–2.3		±5.0	μA
I <sub>I(HOLD)</sub>	Bushold Input Minimum	V <sub>IN</sub> = 0.57V		1.65	25		μA
	Drive Hold Current	V <sub>IN</sub> = 1.07V		1.65	–25		
I <sub>I(OD)</sub>	Bushold Input Over-Drive Current to Change State	(Note 10)		1.95	200		μA
		(Note 11)		1.95	–200		
I <sub>OZ</sub>	3-STATE Output Leakage		0 ≤ V <sub>O</sub> ≤ 3.6V V <sub>I</sub> = V <sub>IH</sub> or V <sub>IL</sub>	1.65–2.3		±10	μA
I <sub>OFF</sub>	Power-OFF Leakage Current		0 ≤ (V <sub>O</sub> ) ≤ 3.6V	0		10	μA
I <sub>CC</sub>	Quiescent Supply Current		V <sub>I</sub> = V <sub>CC</sub> or GND	1.65–2.3		20	μA
			V <sub>CC</sub> ≤ (V <sub>O</sub> ) ≤ 3.6V (Note 12)	1.65–2.3		±20	μA
<p><b>Note 10:</b> An external driver must source at least the specified current to switch from LOW-to-HIGH.  <b>Note 11:</b> An external driver must sink at least the specified current to switch from HIGH-to-LOW.  <b>Note 12:</b> Outputs disabled or 3-STATE only.</p>							

AC Electrical Characteristics (Note 13)								
Symbol	Parameter	T <sub>A</sub> = -40°C to +85°C, C <sub>L</sub> = 30 pF, R <sub>L</sub> = 500Ω						Units
		V <sub>CC</sub> = 3.3V ± 0.3V		V <sub>CC</sub> = 2.5V ± 0.2V		V <sub>CC</sub> = 1.8V ± 0.15V		
		Min	Max	Min	Max	Min	Max	
t <sub>PHL</sub> , t <sub>PLH</sub>	Prop Delay	0.8	2.5	1.0	3.0	1.5	6.0	ns
t <sub>PZL</sub> , t <sub>PZH</sub>	Output Enable Time	0.8	3.5	1.0	4.1	1.5	8.2	ns
t <sub>PLZ</sub> , t <sub>PHZ</sub>	Output Disable Time	0.8	3.5	1.0	3.8	1.5	6.8	ns
t <sub>OSSL</sub> t <sub>OSLH</sub>	Output to Output Skew (Note 14)		0.5		0.5		0.75	ns
<p><b>Note 13:</b> For C<sub>L</sub> = 50pF, add approximately 300 ps to the AC maximum specification.</p> <p><b>Note 14:</b> Skew is defined as the absolute value of the difference between the actual propagation delay for any two separate outputs of the same device. The specification applies to any outputs switching in the same direction, either HIGH-to-LOW (t<sub>OSSL</sub>) or LOW-to-HIGH (t<sub>OSLH</sub>).</p>								
Dynamic Switching Characteristics								
Symbol	Parameter	Conditions	V <sub>CC</sub> (V)	T <sub>A</sub> = +25°C	Units			
				Typical				
V <sub>OLP</sub>	Quiet Output Dynamic Peak V <sub>OL</sub>	C <sub>L</sub> = 30 pF, V <sub>IH</sub> = V <sub>CC</sub> , V <sub>IL</sub> = 0V	1.8	0.25	V			
			2.5	0.6				
			3.3	0.8				
V <sub>OLV</sub>	Quiet Output Dynamic Valley V <sub>OL</sub>	C <sub>L</sub> = 30 pF, V <sub>IH</sub> = V <sub>CC</sub> , V <sub>IL</sub> = 0V	1.8	-0.25	V			
			2.5	-0.6				
			3.3	-0.8				
V <sub>OHV</sub>	Quiet Output Dynamic Valley V <sub>OH</sub>	C <sub>L</sub> = 30 pF, V <sub>IH</sub> = V <sub>CC</sub> , V <sub>IL</sub> = 0V	1.8	1.5	V			
			2.5	1.9				
			3.3	2.2				
Capacitance								
Symbol	Parameter	Conditions	T <sub>A</sub> = +25°C	Units				
			Typical					
C <sub>IN</sub>	Input Capacitance	V <sub>CC</sub> = 1.8, 2.5V or 3.3V, V <sub>I</sub> = 0V or V <sub>CC</sub>	6	pF				
C <sub>OUT</sub>	Output Capacitance	V <sub>I</sub> = 0V or V <sub>CC</sub> , V <sub>CC</sub> = 1.8V, 2.5V or 3.3V	7	pF				
C <sub>PD</sub>	Power Dissipation Capacitance	V <sub>I</sub> = 0V or V <sub>CC</sub> , f = 10 MHz, V <sub>CC</sub> = 1.8V, 2.5V or 3.3V	20	pF				

74VCXH16244

AC Loading and Waveforms



TEST	SWITCH
$t_{PLH}, t_{PHL}$	Open
$t_{PZL}, t_{PLZ}$	6V at $V_{CC} = 3.3 \pm 0.3V$ ; $V_{CC} \times 2$ at $V_{CC} = 2.5 \pm 0.2V$ ; $1.8V \pm 0.15V$
$t_{PZH}, t_{PHZ}$	GND

FIGURE 1. AC Test Circuit

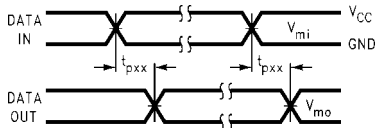


FIGURE 2. Waveform for Inverting and Non-Inverting Functions

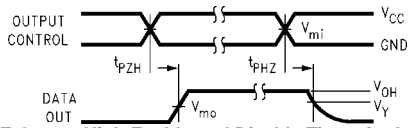


FIGURE 3. 3-STATE Output High Enable and Disable Times for Low Voltage Logic

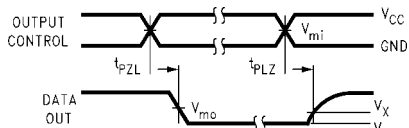
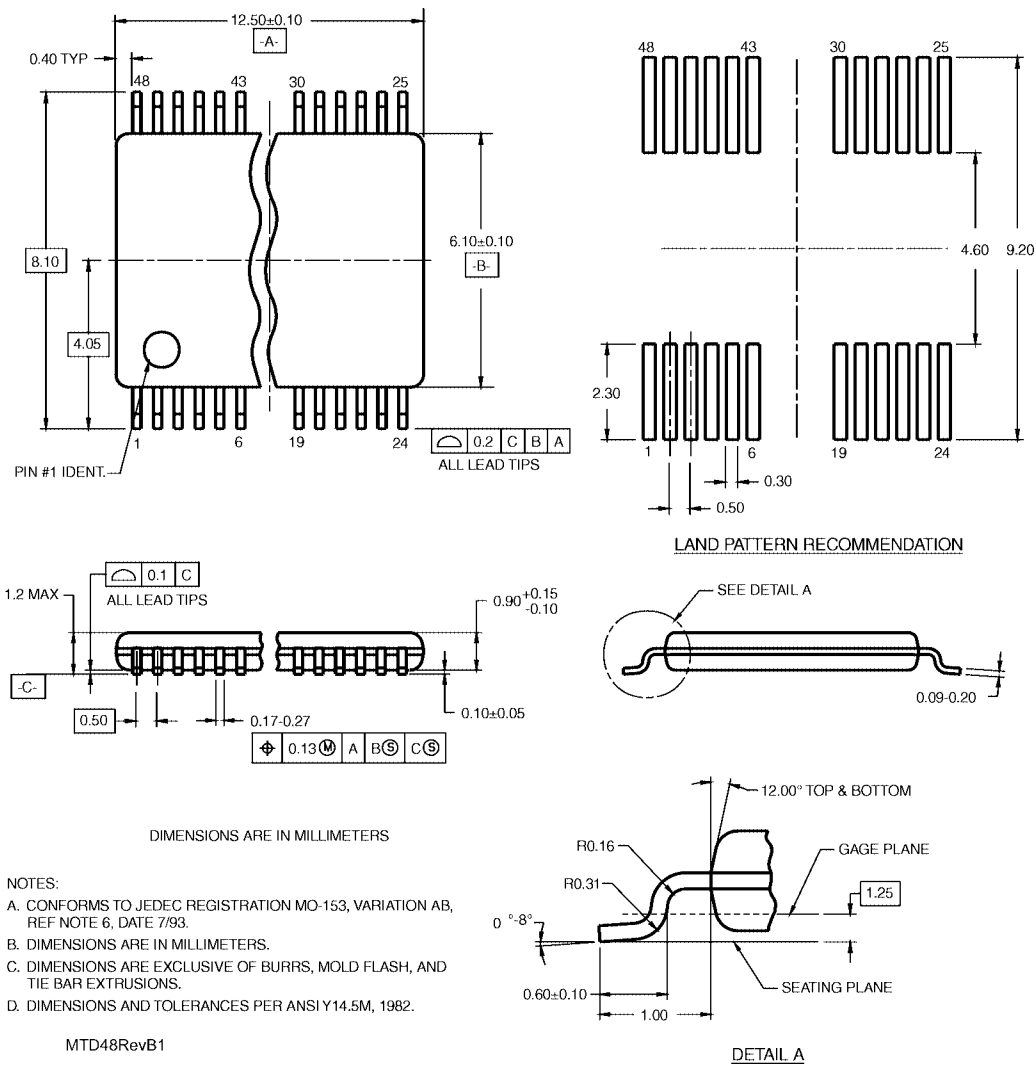


FIGURE 4. 3-STATE Output Low Enable and Disable Times for Low Voltage Logic

Symbol	$V_{CC}$		
	$3.3V \pm 0.3V$	$2.5V \pm 0.2V$	$1.8V \pm 0.15V$
$V_{mi}$	1.5V	$V_{CC}/2$	$V_{CC}/2$
$V_{mo}$	1.5V	$V_{CC}/2$	$V_{CC}/2$
$V_X$	$V_{OL} + 0.3V$	$V_{OL} + 0.15V$	$V_{OL} + 0.15V$
$V_Y$	$V_{OH} - 0.3V$	$V_{OH} - 0.15V$	$V_{OH} - 0.15V$

**Physical Dimensions** inches (millimeters) unless otherwise noted



**48-Lead Thin Shrink Small Outline Package (TSSOP), JEDEC MO-153, 6.1mm Wide Package Number MTD48**

Fairchild does not assume any responsibility for use of any circuitry described, no circuit patent licenses are implied and Fairchild reserves the right at any time without notice to change said circuitry and specifications.

**LIFE SUPPORT POLICY**

FAIRCHILD'S PRODUCTS ARE NOT AUTHORIZED FOR USE AS CRITICAL COMPONENTS IN LIFE SUPPORT DEVICES OR SYSTEMS WITHOUT THE EXPRESS WRITTEN APPROVAL OF THE PRESIDENT OF FAIRCHILD SEMICONDUCTOR CORPORATION. As used herein:

1. Life support devices or systems are devices or systems which, (a) are intended for surgical implant into the body, or (b) support or sustain life, and (c) whose failure to perform when properly used in accordance with instructions for use provided in the labeling, can be reasonably expected to result in a significant injury to the user.
2. A critical component in any component of a life support device or system whose failure to perform can be reasonably expected to cause the failure of the life support device or system, or to affect its safety or effectiveness.

[www.fairchildsemi.com](http://www.fairchildsemi.com)