



Monolithic ICs

ROHM

7-77-21

● Tape Item Selection/Tape Feed Detection/Tape End Detector (continued)

Type	Function	Package		Features	Reference Catalog
		Configuration	No. of pins		
BA3704/BA3704F	3-item selector	DIP/MF	16	Built-in detection amplifier, memory, and LED drivers.	No.3121
BA3712	Tape end detector	SIP	9	A Hall device or other electromagnetic pick-up is used, the output level being controllable. Redrive is possible, if a plunger misdrive should occur.	No.3121
BA3714F	1.5V signal sensor	MF	8	With signal sensor detection circuit for tape end and music selection detection. Includes output control circuit and 2-channel output drive circuit.	No.3121
BA843/BA843F	Tape deck controller	DIP/MF	16	Control is possible with non-locking inputs. All functions necessary for tape deck control are provided.	No.3121
BA3810F	3V Tape deck controller	MF	22	For 3V sets. Tape deck control by input voltage.	No.3121
BA3818F	5-point, 3V comparator array	MF	8	Can be used for tape deck control. Two-wire control.	No.3121
BA3828F	Preset switch, comparator array	MF	22	Can be used as selection switch or tuning meter for radios.	No.3121

● DC Motor Rotation Control

BA6235/BA6235F	3V electronic governor	DIP/MF	8	For 3V governor. Current proportion system. Low saturation voltage of output transistor.	No.3121
BA6227/BA6227F	3V electronic governor	DIP/MF	8	For 3V governor. Current proportion system. Internal output transistor.	No.3121
BA6220	6~12V electronic governor	DIP	8	Current proportion system. 4-pin. Usable for various motors by changing external constant.	No.3121
BA6208	Reversible motor driver	SIP	9	Internal braking circuit; motor drive current of 100mA.	No.3121
BA6218	Reversible motor driver	SIP	9	Internal braking circuit; electronic governor is connectable.	No.3121

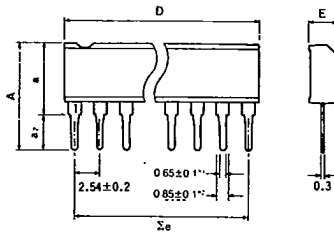
● Reference Voltage Generators

BA3900	Reference voltage generator	SIP-P	12	Incorporate all audio power sources, especially ideal for car-audio equipment; Built-in timing circuit for microcomputer and mute signals for switching on power.	No.3121
BA3902	Reference voltage generator	SIP-P	12	Incorporate all audio power sources, especially ideal for car-audio equipment; Built-in timing circuit for microcomputer and mute signals for switching on power.	No.3121
BA3904A	Reference voltage generator	SIP-P	12	Incorporate all audio power sources, especially ideal for car-audio equipment; Built-in timing circuit for microcomputer and mute signals for switching on power.	No.3121
BA3920	Reference voltage generator	SIP-P	12	Ideal for CD radio cassette recorders; contains a 15V supply for motors, 5V for CD controller, 8V for CD driver, and 5V for radio; internal standby switch, mode switch, etc.	No.3121
BA3922	Reference voltage generator	SIP-P	12	Ideal for CD radio cassette recorders; contains a 12V supply for motors, 7.5V for audio equipment, and 7.5V for CD driver; internal standby switch, mode switch, etc.	—
BA3924	Reference voltage generator	SIP-P	12	Ideal for CD radio cassette recorders; contains a 9V supply for motors, 7.5V for audio equipment, and 7.5V for CD driver; internal standby switch, mode switch, etc.	—
New BA3926	Reference voltage generator	SIP-P	12	Ideal for CD radio cassette recorders; contains a 13.5V supply for motors, 8V for audio equipment, and 12V for CD driver; internal standby switch, mode switch, etc.	—
New BA3928	Reference voltage generator	SIP-P	12	Ideal for CD radio cassette recorders; contains a 9V supply for motors, 5V for CD controller, 8.5V for CD driver; and 6.5V for radio; internal standby switch, mode switch, etc.	—



Dimensions (Unless otherwise specified, dimensions are shown in Typ. values.)

SIP

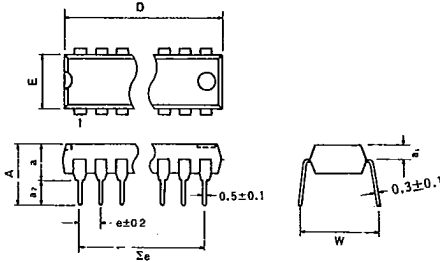


● SIP Dimensions (Unit: mm)

Package	A	a	a ₂	D	Σe	E
SIP 5	9.7	6.2	3.5	12.0	10.16	2.4
SIP 7	9.7	6.2	3.5	17.0	15.24	2.8
SIP 8	10.5	7.0	3.5	19.5	17.78	2.8
SIP 9	10.5	7.0	3.5	22.0	20.32	2.8
SIP 10	10.5	7.0	3.5	25.2	22.86	2.8

*1 SIP 10pin: 0.6 *2 SIP 10pin: 0.8

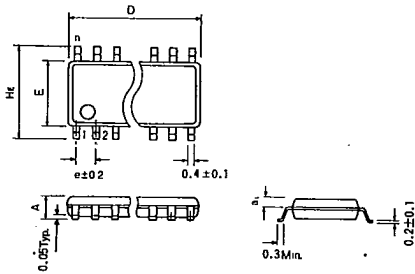
DIP/DIPS



● DIP Dimensions (Unit: mm)

Package	A	a	a ₁	a ₂	D	e	Σe	E	W
DIP 8	6.8	3.6	1.1	3.2	9.3	2.54	7.62	6.5	8.8
DIP 14	6.94	3.65	1.65	3.29	19.4	2.54	15.24	6.5	8.8
DIP 16	6.94	3.65	1.65	3.29	19.4	2.54	17.78	6.5	8.8
DIP 18	6.94	3.65	1.65	3.29	22.9	2.54	20.32	6.5	8.8
DIP 20	7.09	3.65	1.65	3.44	26.3	2.54	22.86	6.5	8.8
DIP 22	7.09	3.65	1.65	3.44	26.3	2.54	25.40	6.5	8.8
DIP 24	7.51	4.22	1.8	3.29	32.0	2.54	27.94	13.8	16.5
DIP 28	7.51	4.22	1.8	3.29	37.1	2.54	33.02	13.8	16.5
DIP 40	7.7	4.5	1.8	3.2	52.3	2.54	48.26	13.8	16.5
DIPS 18	7.35	3.65	1.65	3.7	19.4	1.778	14.224	6.5	8.8
DIPS 22	7.35	3.65	1.65	3.7	19.4	1.778	17.78	6.5	8.8
DIPS 24	7.4	4.0	1.7	3.4	22.8	1.778	19.558	6.5	8.8
DIPS 30	7.9	4.7	1.7	3.2	28.0	1.778	24.892	8.4	11.4
DIPS 32	7.9	4.7	1.7	3.2	28.0	1.778	26.67	8.4	11.4
DIPS 42	7.7	4.5	1.8	3.2	37.1	1.778	35.56	13.8	16.5

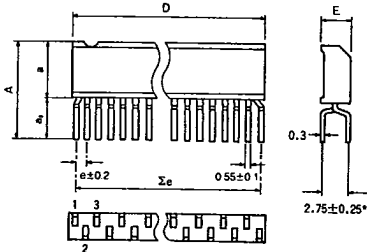
MF/MFS/MFP



● MF Dimensions (Unit: mm)

Package	A	a ₁	D	H _e	e	E
MF 8	1.5	0.65	5.0	6.2	1.27	4.4
MF 14	1.5	0.65	8.7	6.2	1.27	4.4
MF 16	1.5	0.65	10.0	6.2	1.27	4.4
MF 18	1.8	0.8	11.2	7.8	1.27	5.4
MF 20	1.8	0.8	12.5	7.8	1.27	5.4
MF 22	1.8	0.8	13.7	7.8	1.27	5.4
MF 24	1.8	0.8	15.0	7.8	1.27	5.4
MF 28	2.2	1.0	18.5	9.9	1.27	7.5
MFS 16	1.5	0.65	6.6	6.2	0.8	4.4
MFS 20	1.8	0.8	8.7	7.8	0.8	5.4
MFS 24	1.8	0.8	10.0	7.8	0.8	5.4
MFP 24	1.9	0.8	13.7	7.8	0.8	5.4
MFP 28	2.2	0.95	18.5	9.9	0.8	7.5

LF/LFS



● LF Dimensions (Unit: mm)

Package	A	a	a ₂	D	Σe	e	E
LF 9	9.8	5.0	4.8	12.0	10.16	1.27	2.4
LF 12	9.8	5.0	4.8	17.0	13.97	1.27	2.8
LF 16	9.9	5.8	4.1	19.5	19.05	1.27	2.8
LF 18	9.9	5.8	4.1	22.0	21.59	1.27	2.8
LFS 24	10.0	5.8	4.2	22.0	20.447	0.889	2.8

*LFS 24: 2.54±0.25

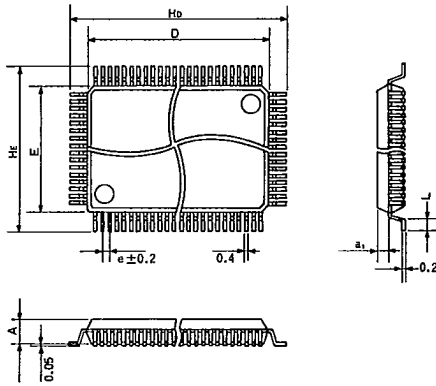


Monolithic ICs



T-90-20

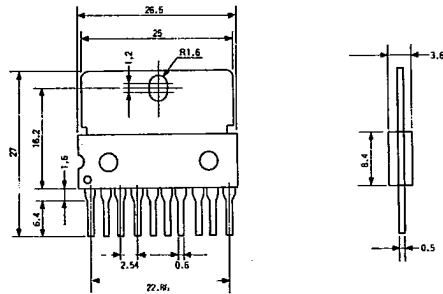
QFP/QFPS



• QFP Dimensions (Unit: mm)

Package	A	a ₁	D	e	E	H _E	H _b	L
QFP 32	1.45	0.65	7.0	0.8	7.0	9.0	9.0	0.4
QFP 44	2.15	1.0	10.0	0.8	10.0	14.0	14.0	1.2
QFP 64	2.15	1.0	20.0	1.0	14.0	18.0	24.0	1.2
QFP 80	2.7	1.275	20.0	0.8	14.0	18.0	24.0	1.2
QFPS 56	2.15	1.0	10.0	0.65	10.0	12.4	12.4	0.5
QFPS 80	2.7	1.275	14.0	0.65	14.0	16.4	16.4	0.5
QFPS 100	2.7	1.275	20.0	0.65	14.0	18.0	24.0	1.2

SIP-P 10 pin



SIP-P 12 pin

