

SHINDENGEN

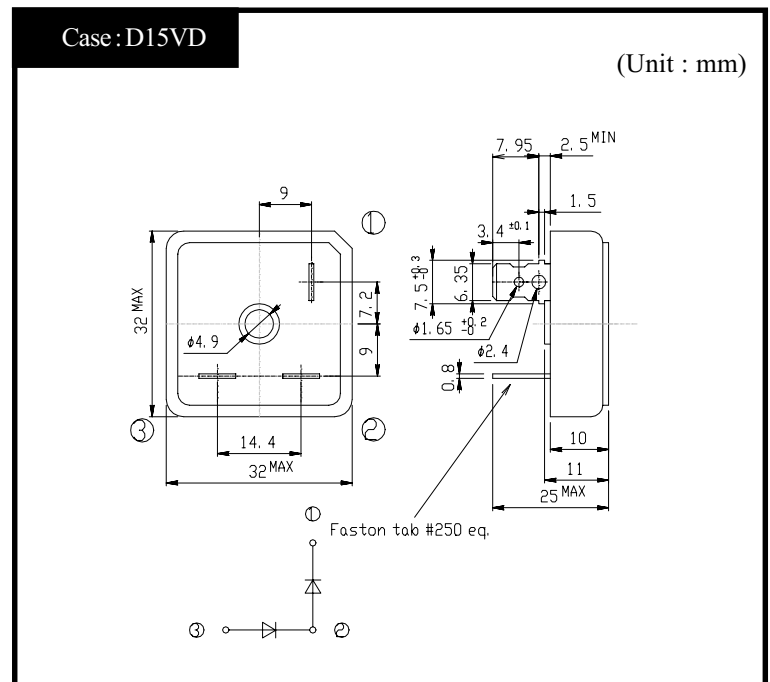
General Purpose Rectifiers

Dual Modules

D15VD40

400V 15A

OUTLINE DIMENSIONS



RATINGS

● Absolute Maximum Ratings

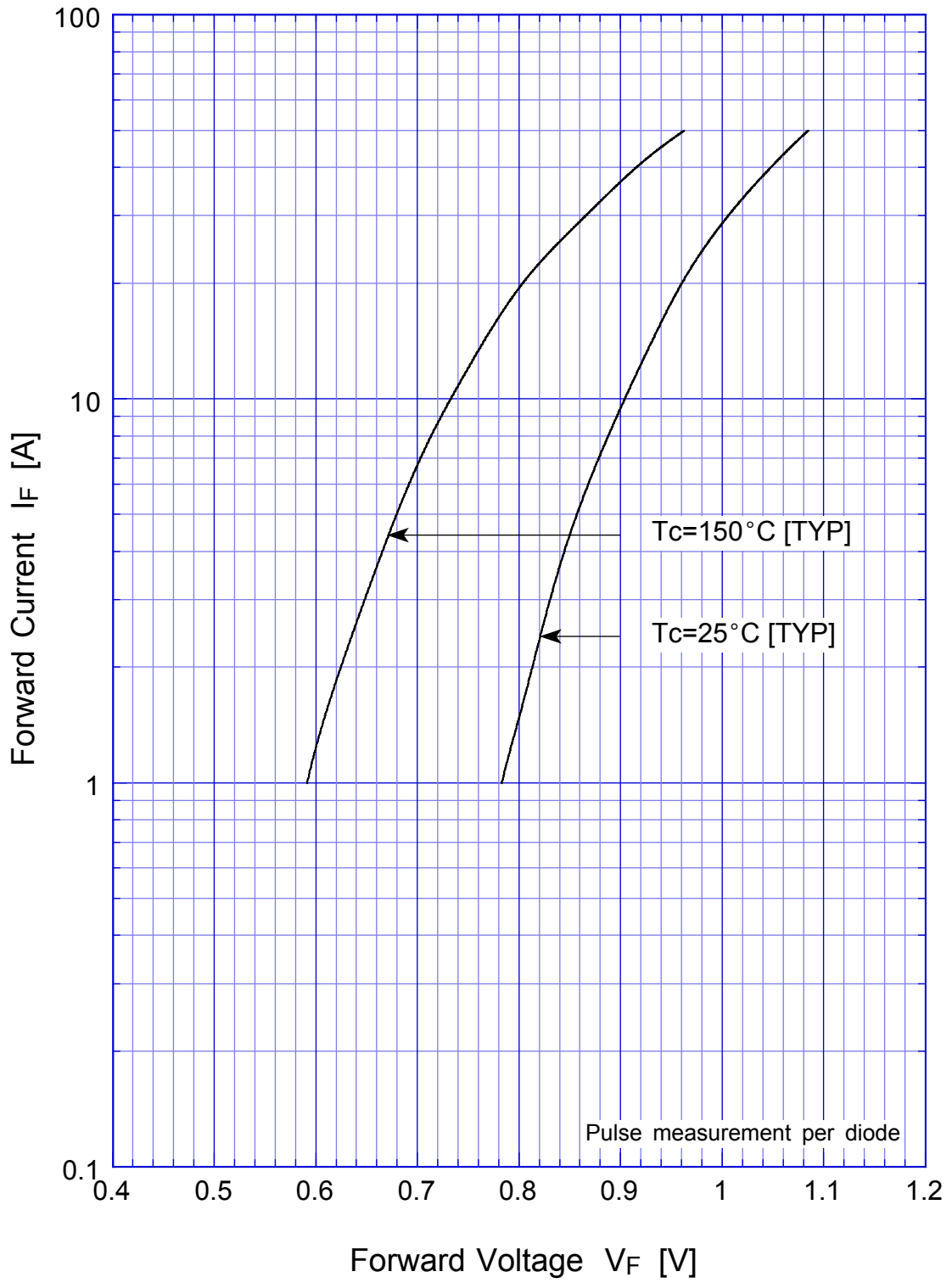
Item	Symbol	Conditions	Ratings	Unit
Storage Temperature	T_{stg}		-40~150	°C
Operating Junction Temperature	T_j		150	°C
Maximum Reverse Voltage	V_{RM}		400	V
Average Rectified Forward Current	I_O	50Hz sine wave Voltage doubler rectification, $T_c=94^\circ\text{C}$ 50Hz sine wave at: Bridge resistance load, $T_c=94^\circ\text{C}$	15 18	A
Peak Surge Forward Current	I_{FSM}	Non-repetitive 50Hz sine wave $T_j=25^\circ\text{C}$	400	A
Dielectric Strength	V_{dis}	Terminals to case, AC 1 minute	2	kV
Mounting Torque	TOR	() Shows recommended value	2(1)	N·m

● Electrical Characteristics (If not specified $T_c=25^\circ\text{C}$)

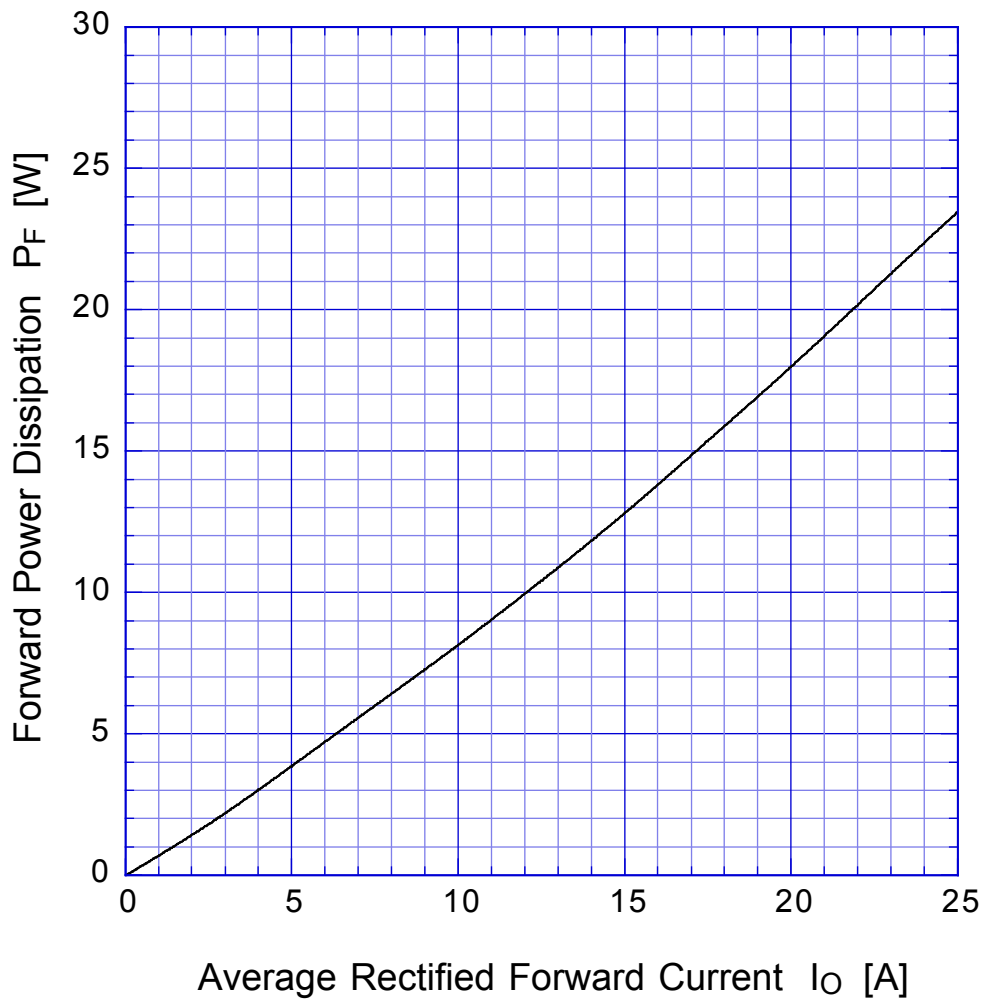
Item	Symbol	Conditions	Ratings	Unit
Forward Voltage	V_F	$I_F=15\text{A}$, Rating of per diode	Max.1.05	V
Reverse Current	I_R	$V_R=V_{RM}$, Rating of per diode	Max.10	μA
Thermal Resistance	θ_{jc}	junction to case	Max.3.5	°C/W

D15VD40

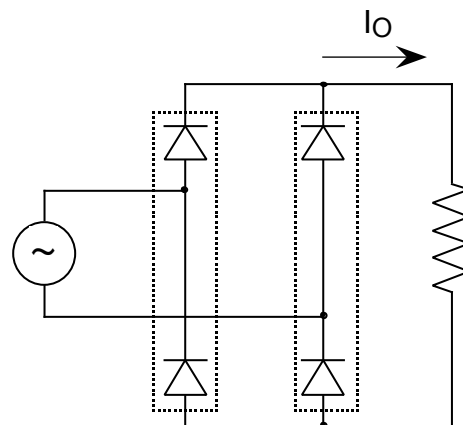
Forward Voltage



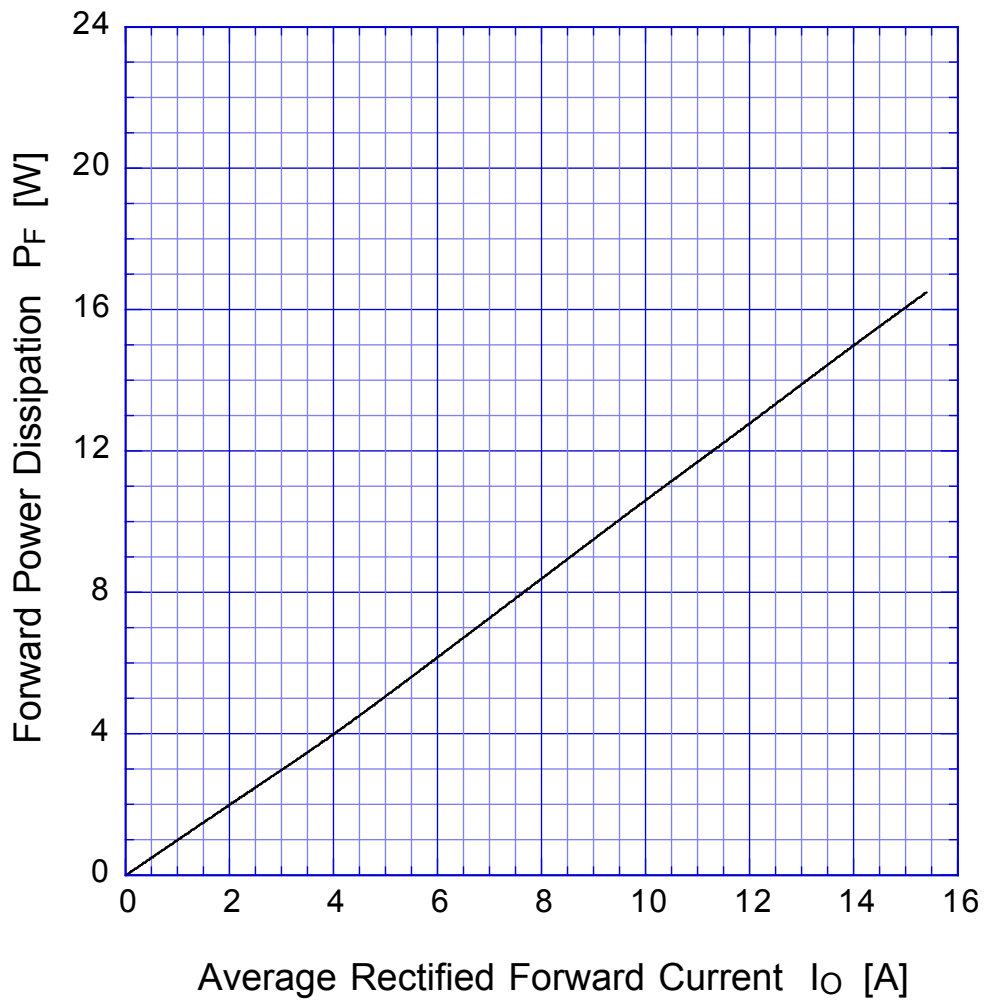
D15VD40 Forward Power Dissipation



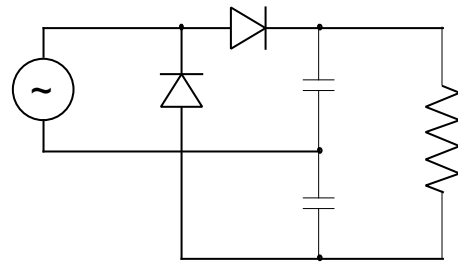
$T_j = 150^\circ\text{C}$
Sine wave
R-load
Single phase rectification



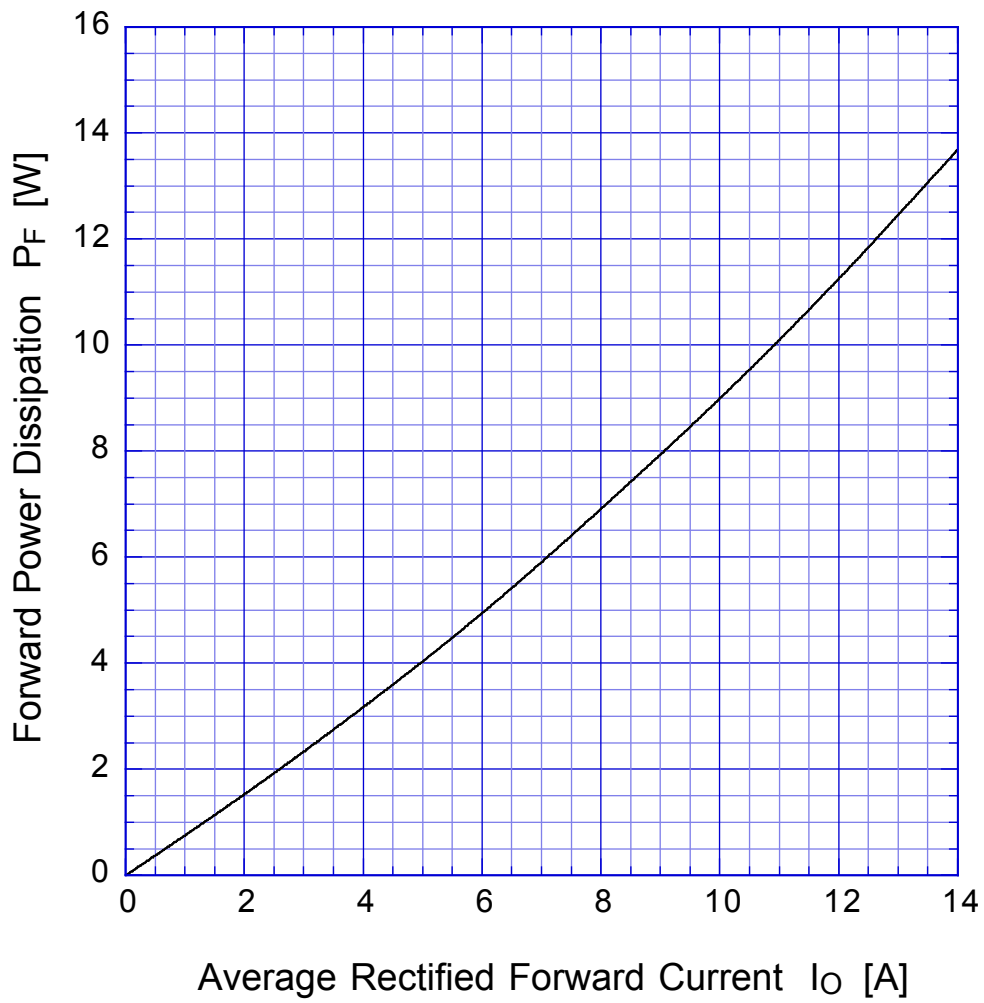
D15VD40 Forward Power Dissipation



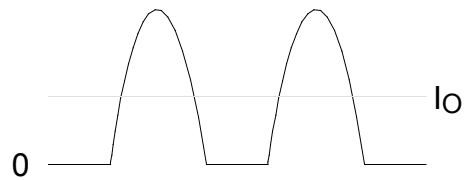
$T_j = 150^\circ\text{C}$
Sine wave
Voltage doubler rectification



D15VD40 Forward Power Dissipation

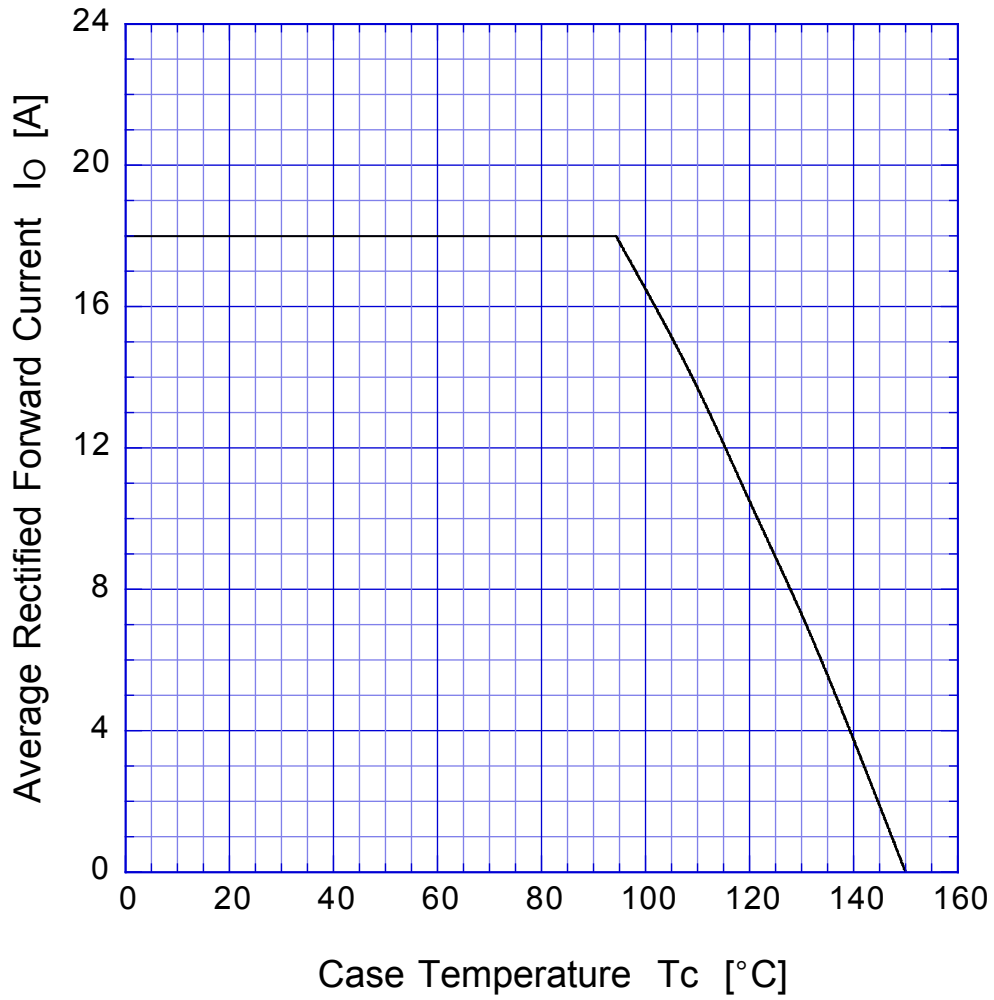


$T_j = 150^\circ\text{C}$
Sine wave
R-load
per diode

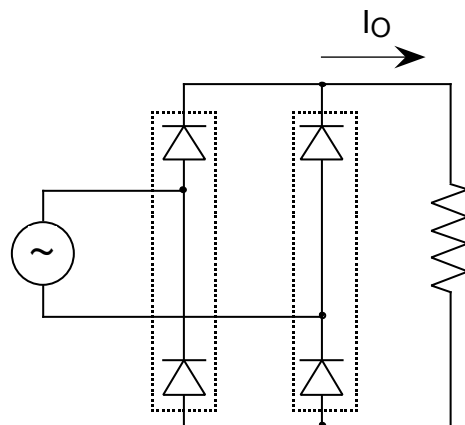


D15VD40

Derating Curve

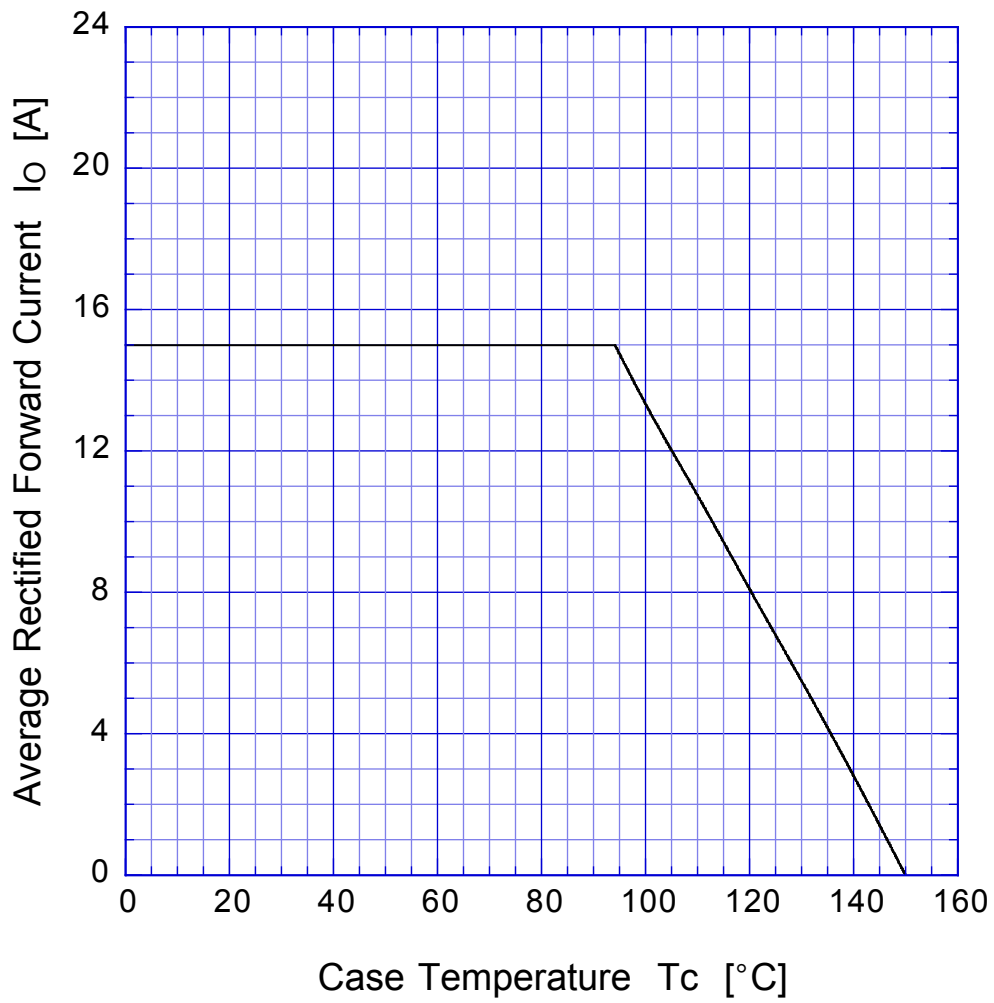


Sine wave
R-load
Single phase rectification

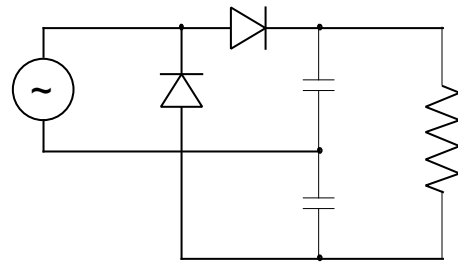


D15VD40

Derating Curve



Sine wave
Voltage doubler rectification



D15VD40 Peak Surge Forward Capability

