

## DM74ALS520/521 8-Bit Comparator

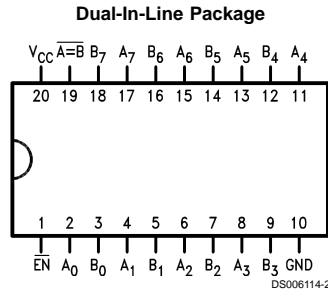
### General Description

These comparators perform an "equal to" comparison of two 8-bit words with provision for expansion or external enabling. The matching of the two 8-bit input plus a logic LOW on the  $\overline{EN}$  input produces the output  $\overline{A=B}$  on the ALS520 and 521. The ALS520 and 521 have totem pole outputs for wire AND cascading. Additionally, the ALS520 is provided with B input pull up termination resistors for analog or switch data.

### Features

- Switching specifications at 50 pF
- Switching specifications guaranteed over full temperature and  $V_{CC}$  range
- Advanced oxide-isolated, ion-implanted Schottky TTL process
- Functionally and pin for pin compatible with LS family counterpart
- Improved output transient handling capability

### Connection Diagram



Order Number DM74ALS520WM, DM74ALS521WM, DM74ALS520N or DM74ALS521N  
See Package Number M20B or N20A

### Function Table

#### ALS520, 521

Inputs		Output
$\overline{EN}$	Data	$\overline{A=B}$
L	A = B	L
L	A ≠ B	H
H	X	H

H = High Logic Level; L = Low Logic Level; X = Don't Care

**Absolute Maximum Ratings** (Note 1)

Supply Voltage	7V
Input Voltage	7V
Operating Free Air Temperature Range	0°C to +70°C
DM74ALS	

Storage Temperature Range

-65°C to +150°C

Typical  $\theta_{JA}$ 

N Package

62.0°C/W

M Package

82.0°C/W

**Recommended Operating Conditions**

Symbol	Parameter	DM74ALS520, 521			Units
		Min	Nom	Max	
$V_{CC}$	Supply Voltage	4.5	5	5.5	V
$V_{IH}$	High Level Input Voltage	2			V
$V_{IL}$	Low Level Input Voltage			0.8	V
$I_{OH}$	High Level Output Current (ALS520, 521)			-2.6	mA
$I_{OL}$	Low Level Output Current			24	mA
$T_A$	Free Air Operating Temperature	0		70	°C

**Electrical Characteristics**over recommended operating free air temperature range. All typical values are measured at  $V_{CC} = 5V$ ,  $T_A = 25^\circ C$ .

Symbol	Parameter	Conditions	Min	Typ	Max	Units
$V_{IK}$	Input Clamp Voltage	$V_{CC} = 4.5V$ , $I_I = -18 mA$			-1.5	V
$V_{OH}$	High Level Output Voltage	$V_{CC} = 4.5V$ to $5.5V$ $I_{OH} = -400 \mu A$	ALS520, 521	$V_{CC} - 2$		V
		$V_{CC} = 4.5V$ $I_{OH} = Max$			2.4	3.2
$V_{OL}$	Low Level Output Voltage	$V_{CC} = 4.5V$	74ALS $I_{OL} = 24 mA$	0.35	0.5	V
$I_I$	Max High Input Current	$V_{CC} = 5.5V$	$V_{IH} = 5.5V$ B Input ALS520 $V_{IH} = 7V$ , All Others		0.1	mA
$I_{IH}$	High Level Input Current	$V_{CC} = 5.5V$ , $V_{IH} = 2.7V$	All Others		20	$\mu A$
			B Input ALS520		-200	
$I_{IL}$	Low Level Input Current	$V_{CC} = 5.5V$ , $V_{IL} = 0.4V$	B Input ALS520		-0.6	mA
			All Others		-0.1	mA
$I_O$	Output Drive Current	$V_{CC} = 5.5V$	$V_O = 2.25V$ ALS520, 521	-30	-112	mA
$I_{CC}$	Supply Current	$V_{CC} = 5.5V$ (Note 2)	ALS520, 521	12	19	mA

**Note 1:** The "Absolute Maximum Ratings" are those values beyond which the safety of the device cannot be guaranteed. The device should not be operated at these limits. The parametric values defined in the "Electrical Characteristics" table are not guaranteed at the absolute maximum ratings. The "Recommended Operating Conditions" table will define the conditions for actual device operation.

**Note 2:**  $I_{CC}$  is measured with  $\overline{EN}$  grounded, A and B inputs at 4.5V and outputs open.

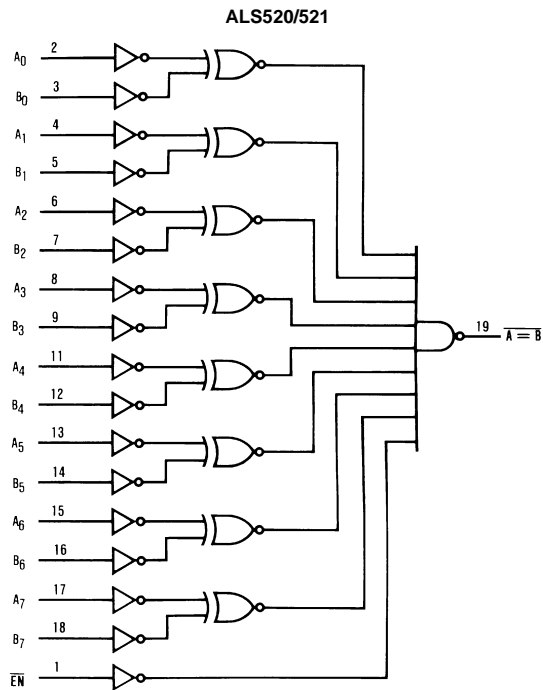
## Switching Characteristics

over recommended operating free air temperature range (Note 3)

Symbol	Parameter	Conditions	From Input	To Output	DM74ALS 520, 521		Units
					Min	Max	
$t_{PLH}$	Propagation Delay Time Low to High Level Output	$V_{CC} = 4.5V$ to $5.5V$ $C_L = 50$ pF $R_L = 500\Omega$	A or B Data	$\overline{A} = \overline{B}$	3	12	ns
$t_{PHL}$	Propagation Delay Time High to Low Level Output		A or B Data	$\overline{A} = \overline{B}$	5	20	ns
$t_{PLH}$	Propagation Delay Time Low to High Level Output		$\overline{EN}$	$\overline{A} = \overline{B}$	2	12	ns
$t_{PHL}$	Propagation Delay Time High to Low Level Output		$\overline{EN}$	$\overline{A} = \overline{B}$	5	22	ns

**Note 3:** See Section 1 for test waveforms and output load.

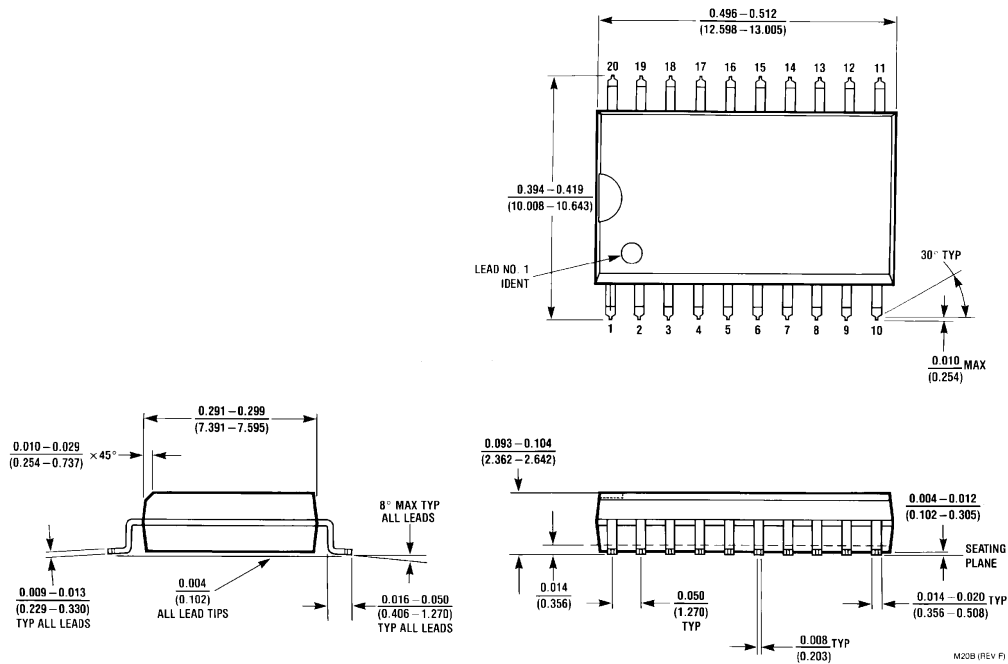
## Logic Diagram



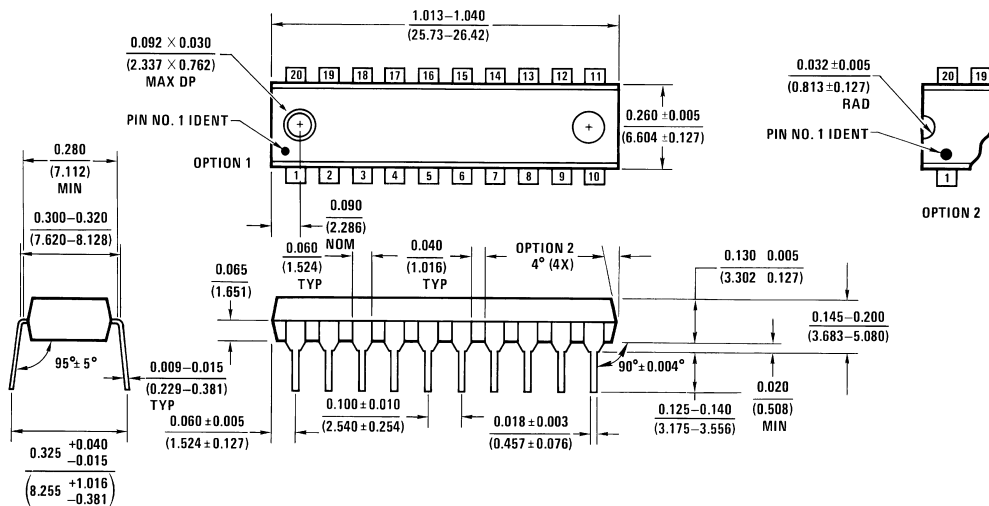
DS006114-4



**Physical Dimensions** inches (millimeters) unless otherwise noted



**S.O. Package (M)**  
**Order Number DM74ALS520WM or DM74ALS521WM**  
**Package Number M20B**



**Molded Dual-In-Line Package (N)**  
**Order Number DM74ALS520N or DM74ALS521N**  
**Package Number N20A**

**LIFE SUPPORT POLICY**

FAIRCHILD'S PRODUCTS ARE NOT AUTHORIZED FOR USE AS CRITICAL COMPONENTS IN LIFE SUPPORT DEVICES OR SYSTEMS WITHOUT THE EXPRESS WRITTEN APPROVAL OF THE PRESIDENT OF FAIRCHILD SEMICONDUCTOR CORPORATION. As used herein:

1. Life support devices or systems are devices or systems which, (a) are intended for surgical implant into the body, or (b) support or sustain life, and (c) whose failure to perform when properly used in accordance with instructions for use provided in the labeling, can be reasonably expected to result in a significant injury to the user.
2. A critical component in any component of a life support device or system whose failure to perform can be reasonably expected to cause the failure of the life support device or system, or to affect its safety or effectiveness.

**Fairchild Semiconductor Corporation Americas**  
Customer Response Center  
Tel: 1-888-522-5372

**Fairchild Semiconductor Europe**  
Fax: +49 (0) 1 80-530 85 86  
Email: europe.support@nsc.com  
Deutsch Tel: +49 (0) 8 141-35-0  
English Tel: +44 (0) 1 793-85-68-56  
Italy Tel: +39 (0) 2 57 5631

**Fairchild Semiconductor Hong Kong Ltd.**  
13th Floor, Straight Block,  
Ocean Centre, 5 Canton Rd.  
Tsimshatsui, Kowloon  
Hong Kong  
Tel: +852 2737-7200  
Fax: +852 2314-0061

**National Semiconductor Japan Ltd.**  
Tel: 81-3-5620-6175  
Fax: 81-3-5620-6179

[www.fairchildsemi.com](http://www.fairchildsemi.com)